




Archaeologies of a lived landscape: considerations of the recent past at the Olympic Park site

Emma Dwyer

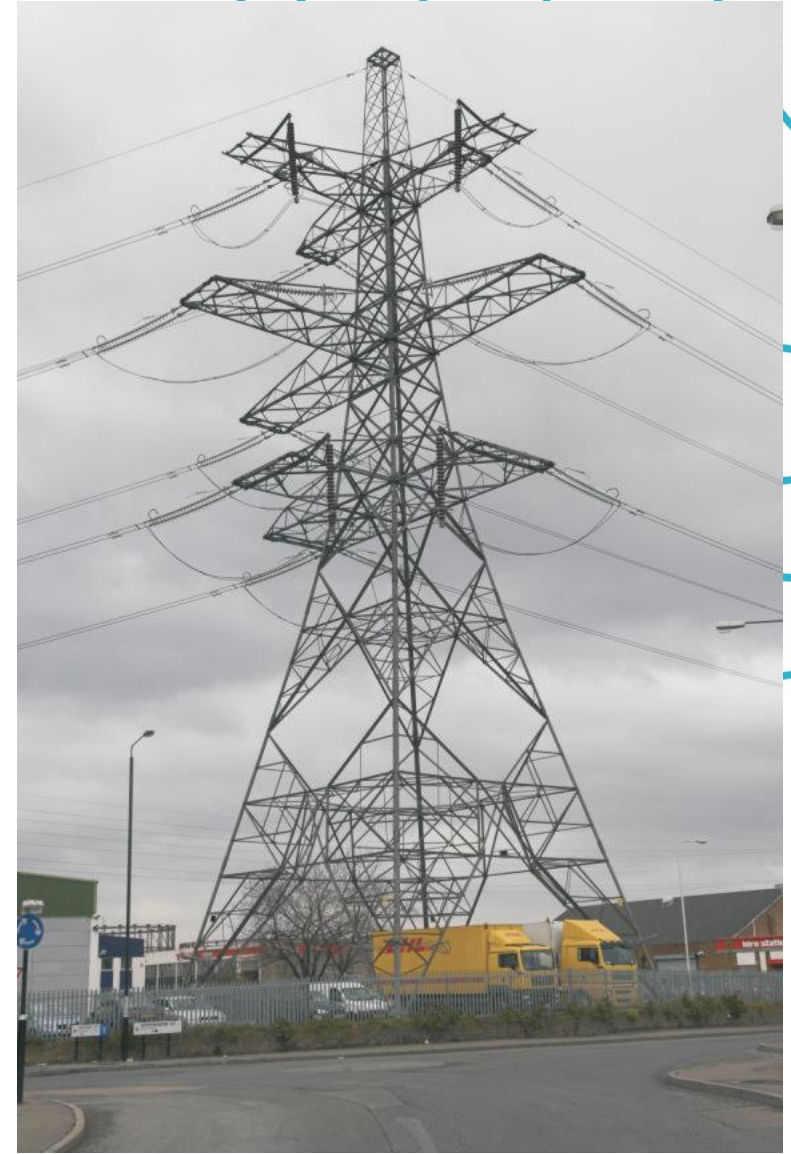
MOLA (Museum of London Archaeology)

- 
- What were the priorities for archaeology and building recording – and what wasn't?
 - How archaeologists record the built environment
 - Using archaeological methods and insights to think about Stratford's lived landscape – electricity pylons
 - Taking an archaeological approach to lived landscapes

Archaeological fieldwork at the Olympic Park site
(from Andrew B. Powell, 2012)



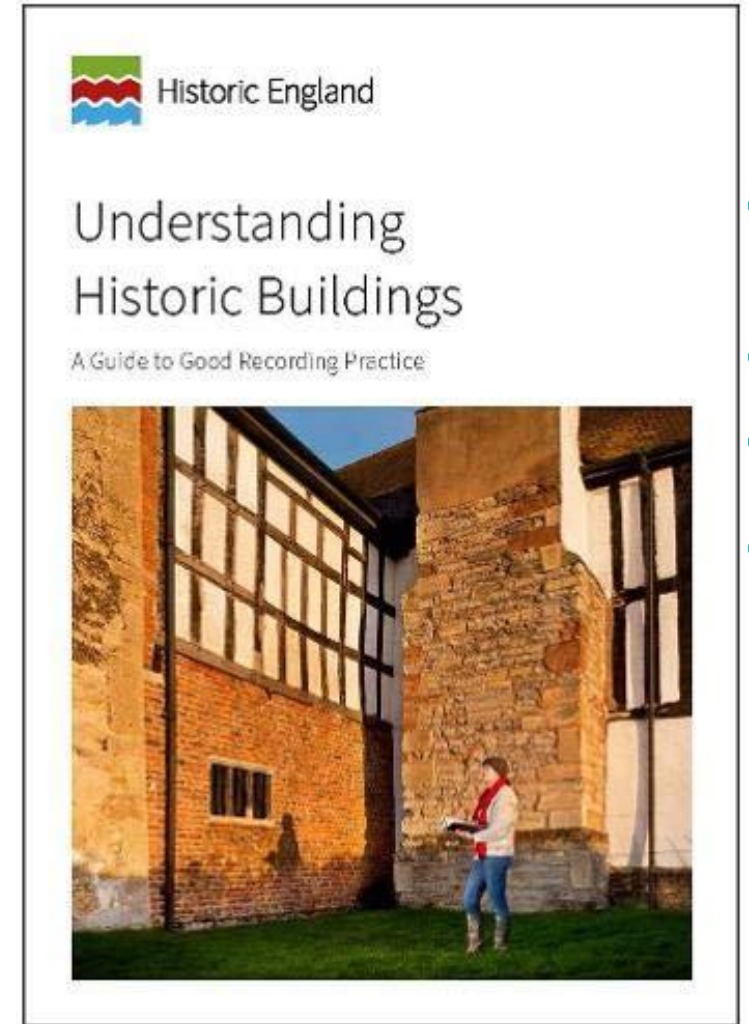
Standing Building Recording at the Olympic Park site



How to record buildings

Records of historic buildings are often made for one or more of the following reasons:

- to inform management and use of buildings;
- to promote understanding and appreciation of historic buildings;
- To understand a building and its significance, informing a scheme of conservation, repair or alteration;
- **to inform decisions relating to a scheme of development as part of the planning or conservation process;**
- **to document buildings, or parts of buildings, which will be lost as a result of demolition, alteration or neglect;**
- to assess the significance of buildings, settlements and landscapes;
- to provide data for thematic, topographic or period-specific research by recording a sample of surviving structures.



When to record buildings

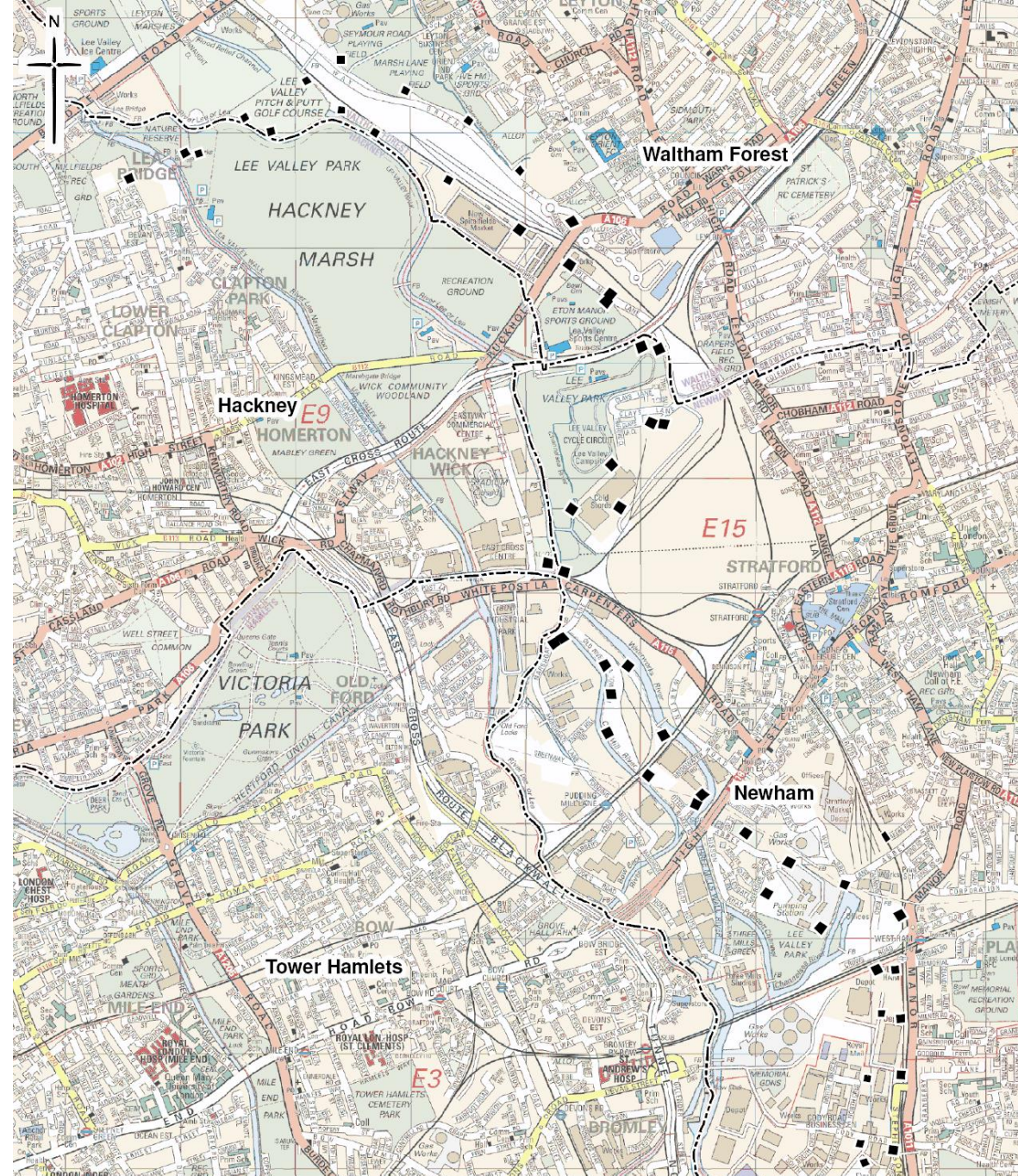


Left: interior of a former glassworks factory building at 7 Pudding Mill Lane (2007).



Right: a furniture workshop under a railway arch in Pedley Street, off Brick Lane

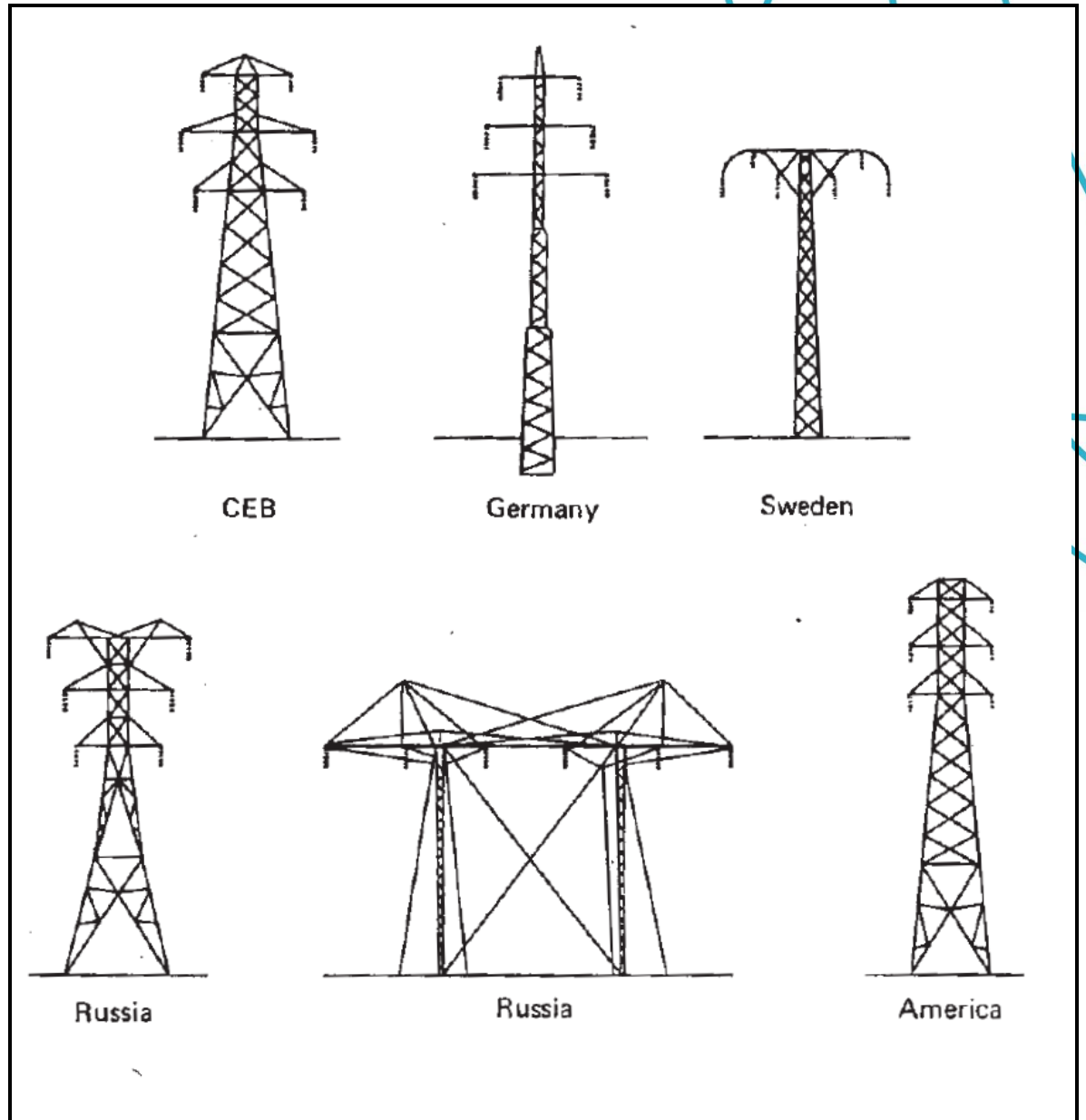
Pylons

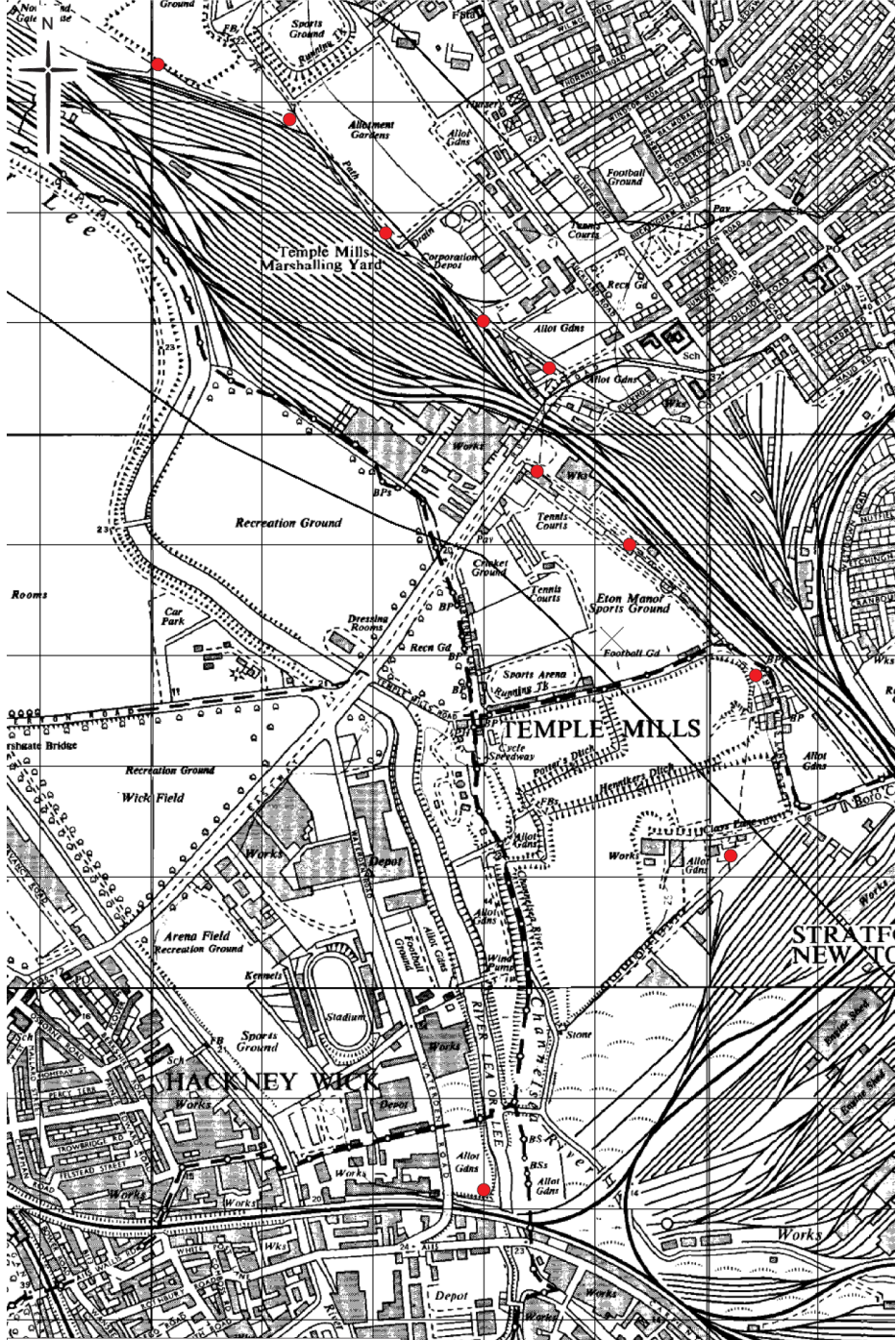


Based upon the Ordnance Survey mapping with the permission of the Controller of Her Majesty's Stationery Office © Crown Copyright. Unauthorised reproduction infringes Crown copyright and may lead to prosecution or civil proceedings. City of London 100023243 2007.

0 1,000m



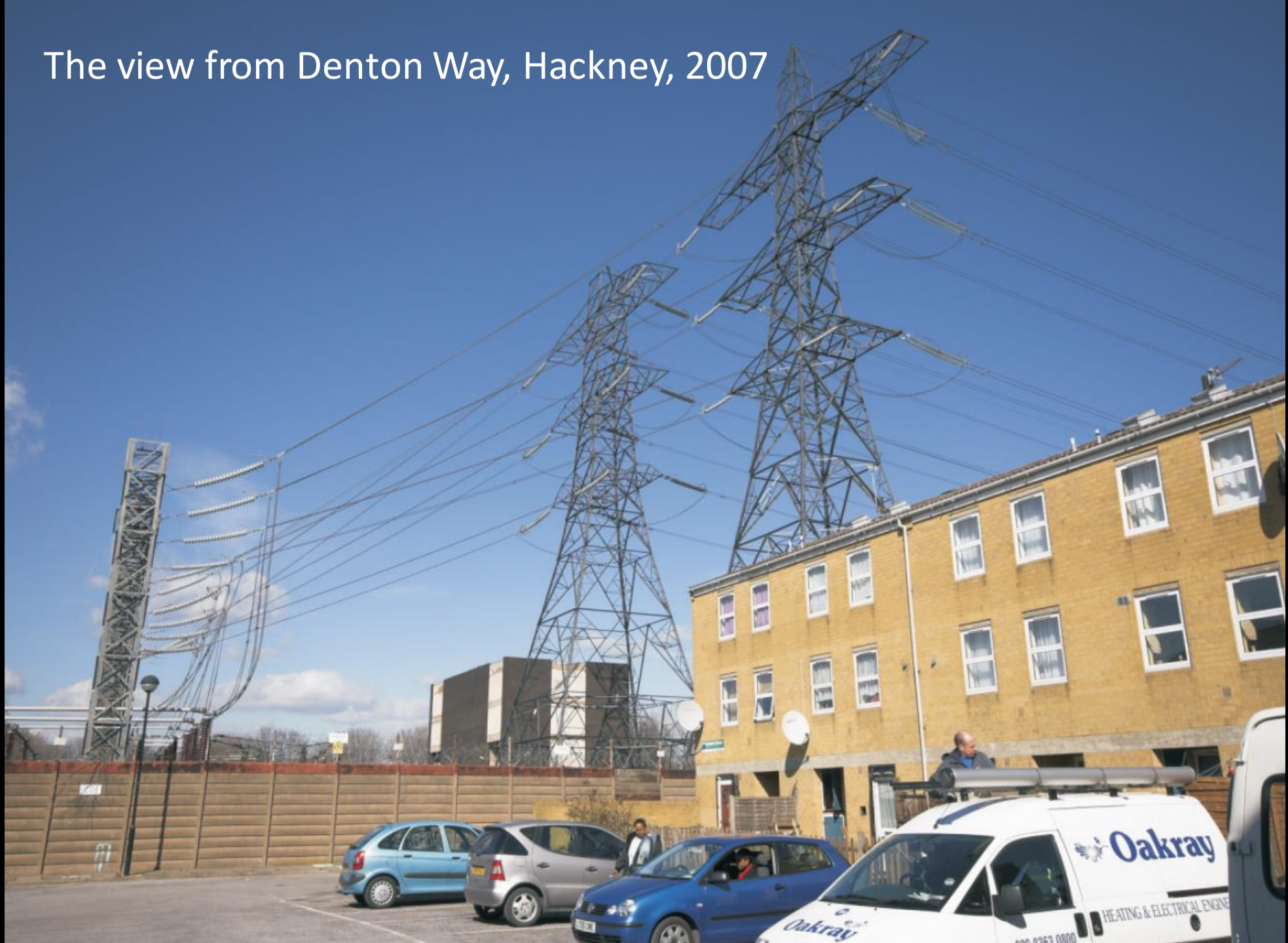




Temple Mills in 1968

This map is reproduced from Ordnance Survey material with the permission of Ordnance Survey on behalf of the controller of Her Majesty's Stationery Office © Crown copyright 2006. All rights reserved. Unauthorised reproduction infringes Crown copyright and may lead to prosecution or civil proceedings. Corporation of London 100023243 2007.

The view from Denton Way, Hackney, 2007





The Pylon Trading Estate
(now Europa Trade Park),
Cody Road



Stills from the film 'The Games' (2007), which 'constructs a surreal document of a changing city through an alternative Olympics staged on the wasteland of the 2012 Olympic sites'. Here, the base of a pylon on Hackney Marshes was adapted for use as a boxing ring.

© Hilary Powell/Optimistic Productions

Taking an archaeological approach to lived landscapes

- Doing archaeology while places are used
- Charting the change in use that happens as part of the development process
- Co-designing projects and research with residents – handing over control

