

01 | WELCOME



Illustrative view of Marshgate 1 and Pool Street West from London Aquatics Centre looking south

INTRODUCTION

Welcome to the UCL East Phase 1 Exhibition.

This exhibition brings together plans for Pool Street West and Marshgate sites of the first phase of UCL East, a new campus for UCL (University College London) within Queen Elizabeth Olympic Park.

Together they will feature a range of uses, including academic, retail, community and engagement uses as well as student accommodation.



Pick up a feedback form to share your views on what you've seen. Alternatively, submit your completed feedback form via email or post by **Monday 26 March 2018**.

POOL STREET WEST

Pool Street West will be a mixed-use university building, bringing together academic space and amenities with student accommodation.

➤ **SEE BOARDS 05 - 07**

MARSHGATE 1

Marshgate 1 will be an academic building opening onto the riverside, incorporating spaces for public use and community engagement.

➤ **SEE BOARDS 08 - 11**

02 | ABOUT UCL EAST

BACKGROUND

In partnership with London Legacy Development Corporation (LLDC), UCL is establishing UCL East, a new university campus within Queen Elizabeth Olympic Park (the Park). It is the largest single expansion of UCL since the university was founded nearly 200 years ago.

UCL East, together with Stratford Waterfront, will form a cluster of top universities, cultural institutions, enterprises and organisations which will showcase and generate outstanding art, dance, history, craft, science, technology and design.

UCL East will help deliver the legacy transformation of the Park, alongside other projects at the neighbouring Stratford Waterfront site, including UAL's London College of Fashion, V&A East and Sadler's Wells East.

UCL EAST SITES



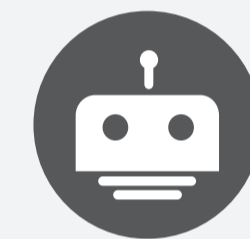
BRINGING THE ACADEMIC VISION TO LIFE

The UCL East team have been working closely with staff, students, LLDC, local communities, as well as designers, planners and other professional consultants, to develop the vision for what UCL East will be and what it will be home to.

This process has culminated in the creation of an ambitious academic vision for UCL East, developed from the ground up.



Making: We're focusing on "learning by doing": hands-on teaching and research around making, imaging and manufacturing. We'll have flexible project spaces, workshops and specialised teaching laboratories.



Originating: We'll be a hub for innovation activities, focusing on the intersection between humans, their social interactions and technology - ranging from robotics and cultural technology to future manufacturing and global cities. We're creating new courses for students in these areas and establishing new incubation facilities for start-ups.



The faculties involved in Phase 1 have worked together to identify four themes, which bring together and integrate the various academic activities:

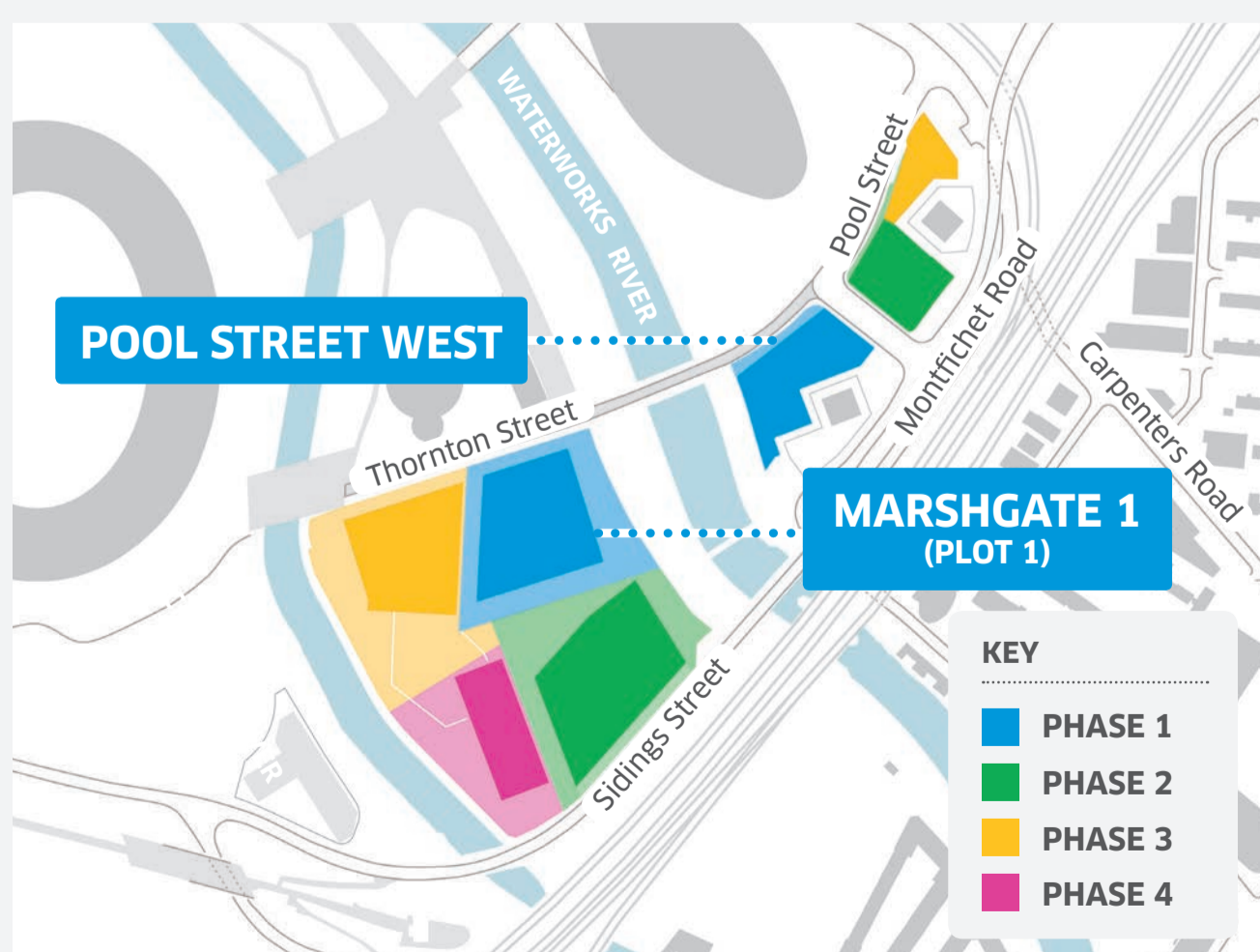
Connecting: We're reinventing the way UCL connects with the public, creating shared academic and public spaces which are inviting and approachable. We're providing access to learning and to research findings through indoor and outdoor spaces for festivals, performances, collections and exhibitions.



Living: We're integrating the Park into the learning experience as a 'living laboratory', engaging people with their natural environment, and creating the space to debate the past, present and future of London. We'll have residences for students, promoting a new approach to holistic university life.

PHASING OF UCL EAST

The first phase of UCL East will focus around Waterworks River, helping to establish a strong presence within the Park. By keeping away from Sidings Street, it also ensures that future development and construction will not affect existing operation and University life.



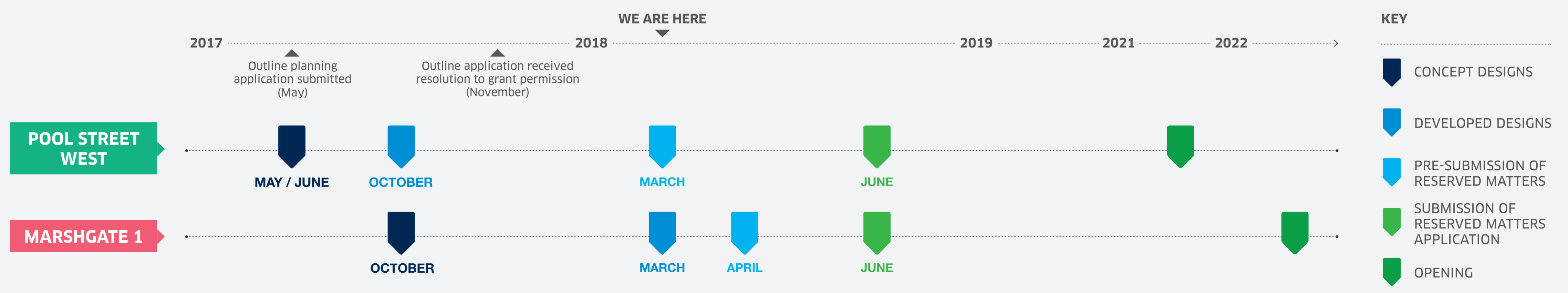
OUTLINE APPLICATION

The outline application is based upon an illustrative masterplan produced by LDA Design on behalf of UCL and LLDC. The outline application was submitted jointly by UCL and LLDC in May 2017 to the Local Planning Authority, the LLDC Planning Policy and Decisions Team (LLDC PPDT). In November 2017, the outline planning application received resolution to grant permission.



Masterplan: Illustrative view of UCL East in section from the south (the yellow and red tones represent the active street levels of the 'Fluid Zone')

PHASE 1 INDICATIVE TIMELINE



03 | CONSULTATION TO DATE

OVERVIEW

Between summer 2015 and autumn 2016, over 4,800 people were engaged on the UCL East masterplan consultation to help gather aspirations and understand key issues.

Consultation on UCL East Phase 1 is a three-stage process, involving stakeholders and the community at each key stage of design development to raise awareness, present back the findings, explain current thinking and gather feedback on the proposals.

Since May 2017, over 475 people have been involved in and consulted on UCL East Phase 1 through drop-in events and outreach sessions. Feedback was gathered from both the UCL community and the local community to gain an understanding of thoughts, issues and aspirations.

On the far right is an overview of UCL Culture's engagement in the local area to date.

STATS AT A GLANCE

475+

people engaged through Stages 1 and 2 exhibition events and activities



Including:



UCL Sabbatical Officers walkabout sessions



Legacy Youth Voice sessions and Youth Board meetings

136

people attended 2 local exhibitions*

190

UCL students & staff engaged at 2 UCL exhibitions*

*October 2017 events

21,000

event flyers delivered**

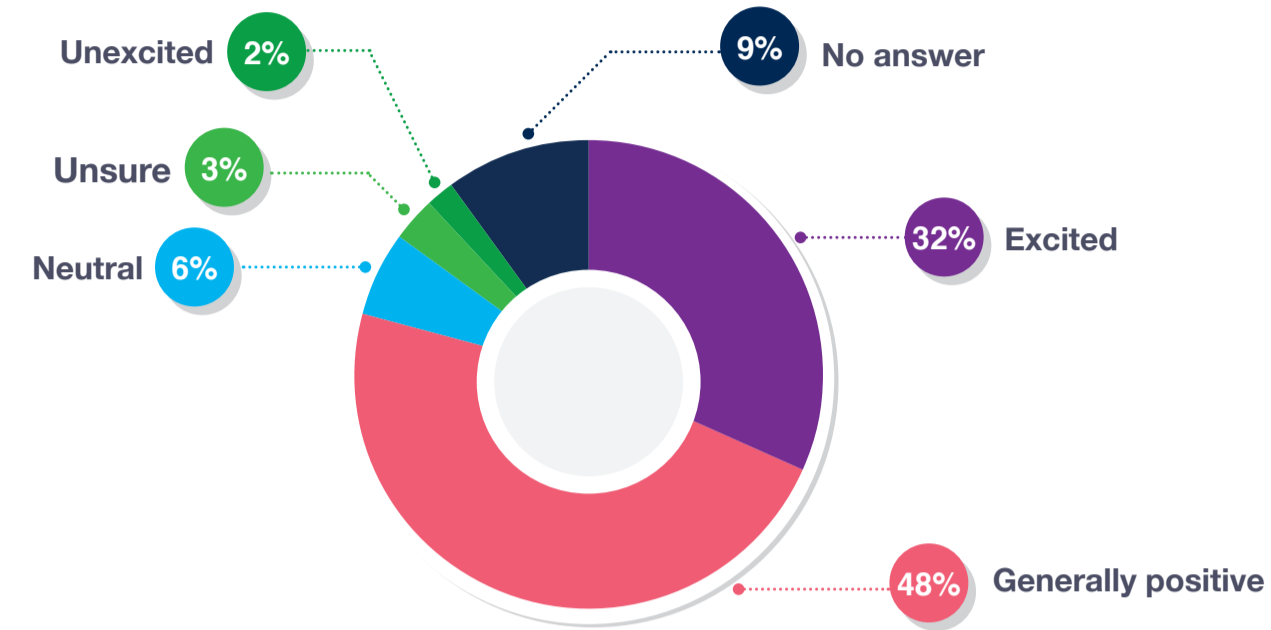
**Emails were sent to contacts collated during the consultation process since the masterplan stage.



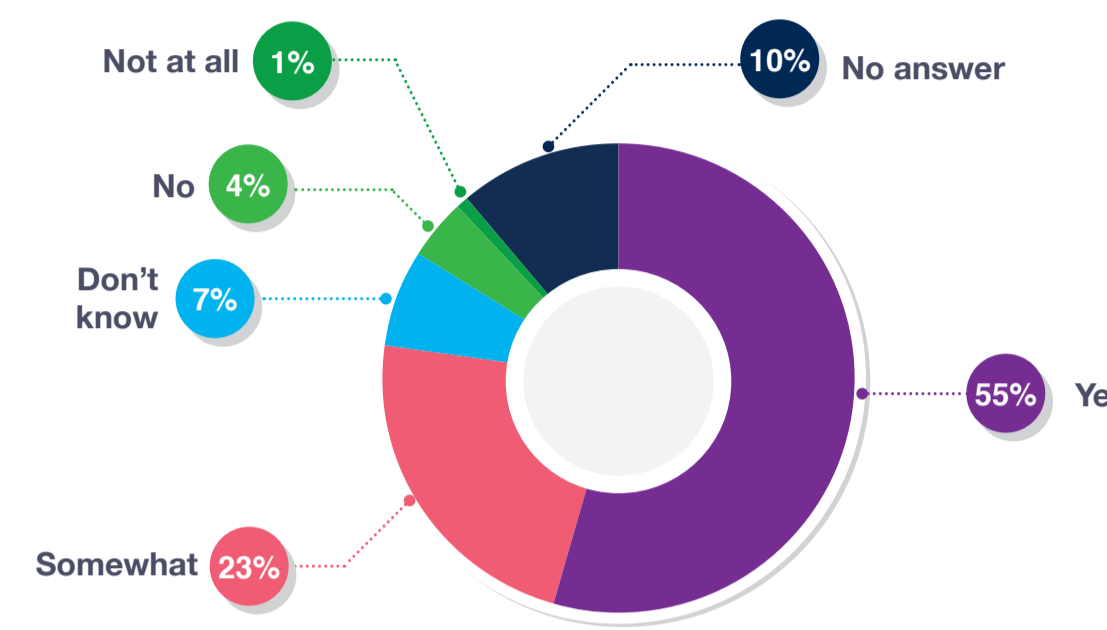
250+ comments & suggestions received

CONSULTATION SUMMARY

Overall what is your impression of the designs you have seen today?



Do the designs work together and provide a strong presence?



HEADLINE FINDINGS*

*FROM OCTOBER 2017 EVENTS



Design, Identity, Scale and Architecture:

The feedback for Pool Street West was generally positive, with people particularly responding well to its contemporary aesthetic. Some people expressed concern over the building's height whilst others were encouraged by its iconic quality. Comments received in response to the concept designs for Marshgate 1 praised its open and modern feel and positive way in which it relates to its surroundings. The concept of the Fluid Zone (publicly accessible and active uses at lower levels) was supportive at the youth sessions. They would like to see this expressed more as part of the character and identity of Marshgate.



Community Benefit, Facilities and Involvement:

There was a shared view across consultees that the public entrances and atriums are permeable, open, bright and welcoming. Some people felt the entrance spaces may be intimidating to visitors. However most agreed that the buildings' openness to the public would be valued by locals, stimulate interest and involvement as well as providing a potential tourist attraction.



Open and Public Spaces:

The Fluid Zone in both buildings was well received, with people suggesting there could be more planting and seating. Consultees were strongly supportive of the approach to the terrace for Pool Street West, considering this would bring benefits in terms of activity, animation and mental health, as well as its importance to tie in with Park.



Public exhibition, Stratford Library



Public exhibition, UCL Bloomsbury

Legacy Youth Voice



UCL Sabbatical Officers walkabout

Public exhibition, UCL Bloomsbury

UCL ENGAGEMENT

UCL is an open, publicly engaged university. We value collaboration, partnership and dialogue to maximise our collective impact in society, now and in the future.

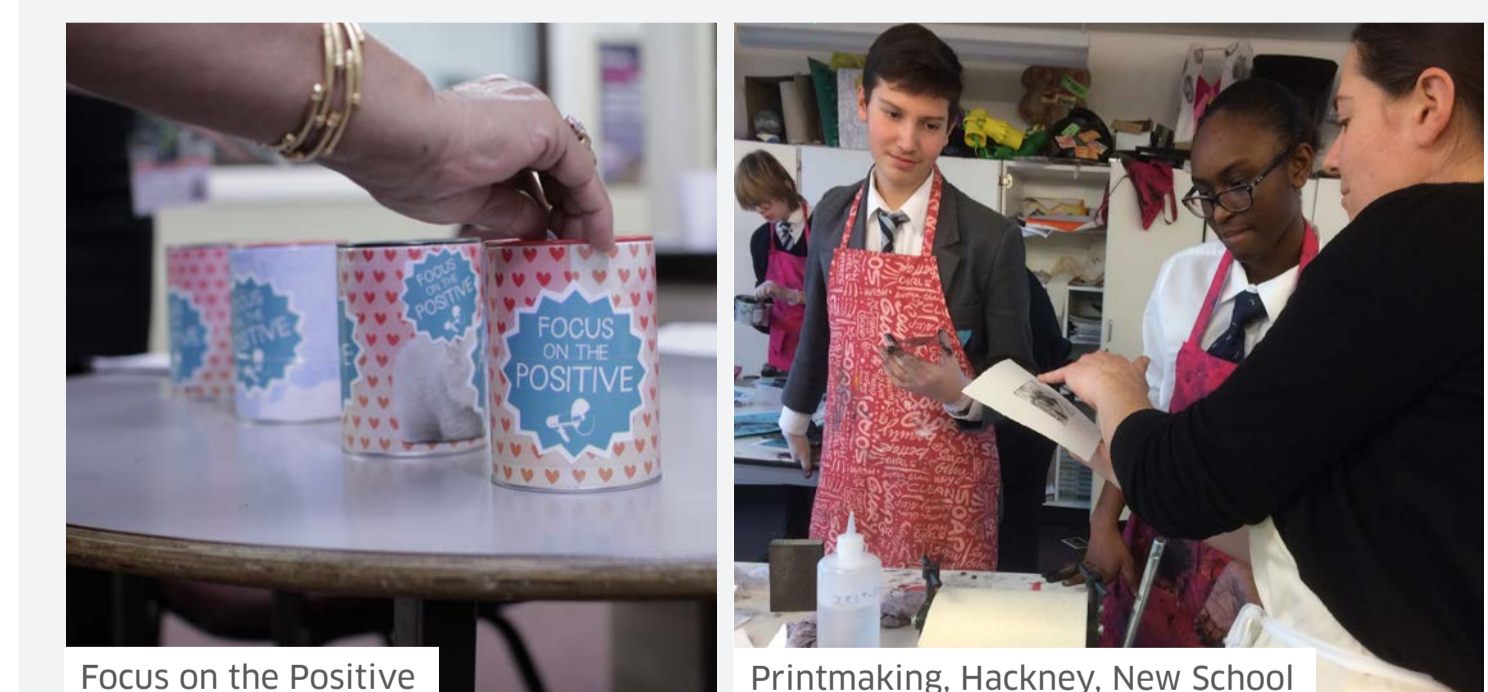
As we develop a new UCL East campus, our engagement work with local communities is at the heart of what we do.

We will work with local communities and partners to:

- Ensure that UCL's world-class research addresses real world problems and is shared and accessed beyond the university
- Enable local communities to access the new UCL spaces and resources, and the opportunities they bring
- Ensure that schools and young people benefit from UCL cutting-edge research and teaching to develop their own education and aspirations
- Develop a programme of public art and cultural events which are seen as relevant, meaningful and part of the everyday lives of local people



Bright Club, 9 Feb 2017, Stratford Circus



Focus on the Positive

Printmaking, Hackney, New School



We look forward to collaborating with, and learning from, many of you. Please get in touch if you would like to find out more, or to sign up for our newsletter by emailing:

engagement-east@ucl.ac.uk

04 | ACCESS & LANDSCAPE FEATURES

BACKGROUND

Following the submission of the outline planning application in May 2017, UCL will submit planning applications (known as 'Reserved Matters Approval') for the detailed design of buildings and landscaping associated with the various phases of the masterplan. The first RMA applications to be submitted will be for Pool Street West, Marshgate 1 and the associated public realm.

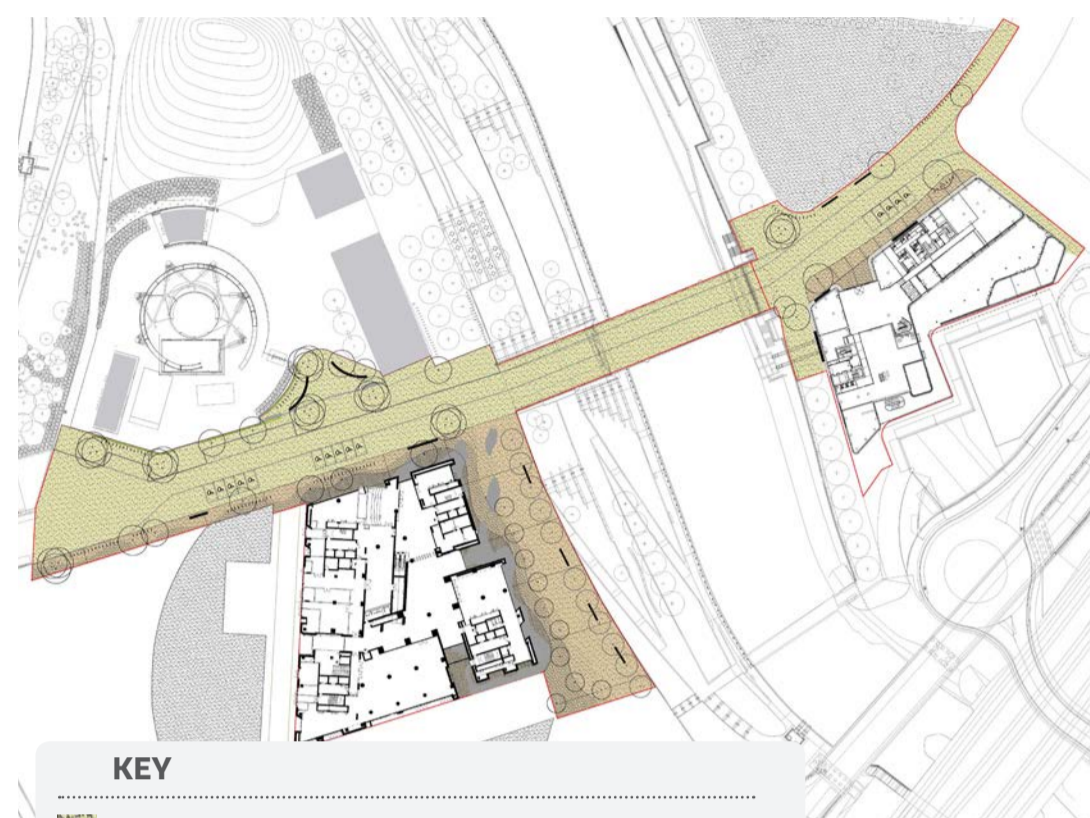
The Phase 1 buildings will come together to form a coherent environment with academic facilities, student living, and a high-quality public realm.

UCL appointed architects Lifschutz Davidson Sandilands and Stanton Williams to lead on the detailed design for the Phase 1 sites of Pool Street West and Marshgate 1, respectively.

The teams have considered the landscape between the two buildings carefully, considering the wider context and continuity through the Park. Landscape architects VOGT developed the landscape strategy for Phase 1 to show character identity and activities. Key features are illustrated on the right.

The public realm will form a key gathering space on campus, for events and areas to congregate, connect and relax. The public realm is designed to be pedestrian led, as in the rest of the Park.

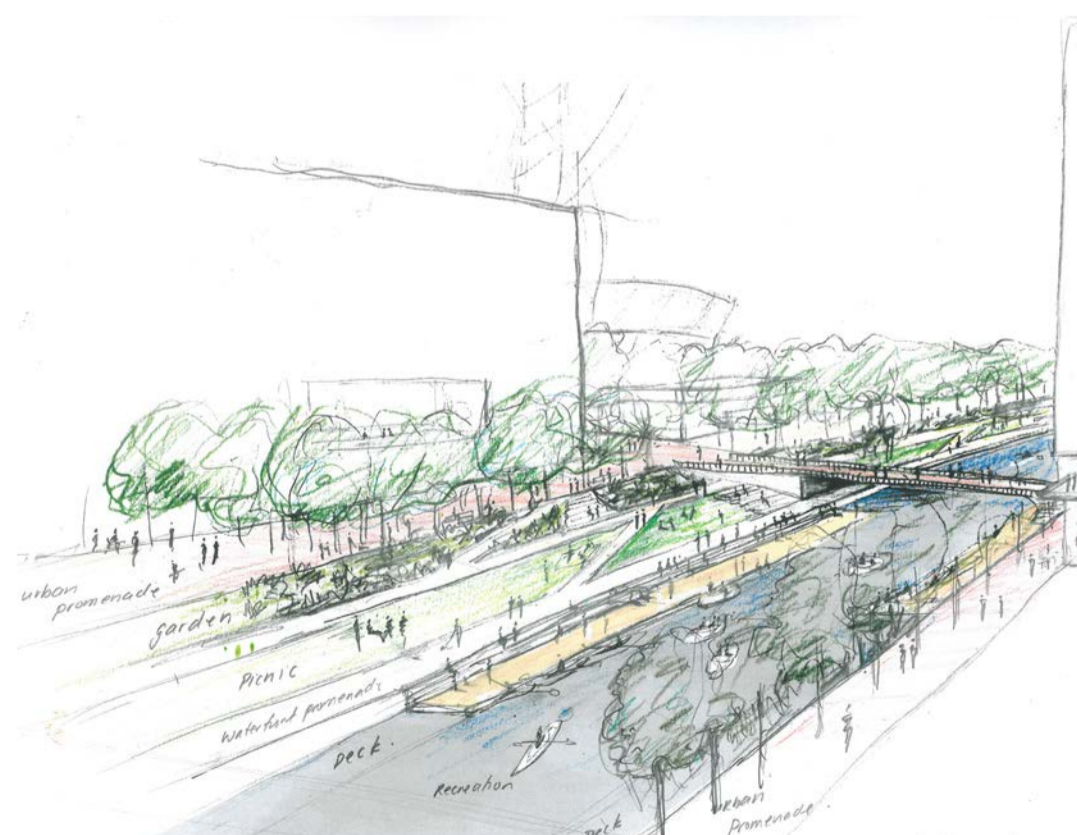
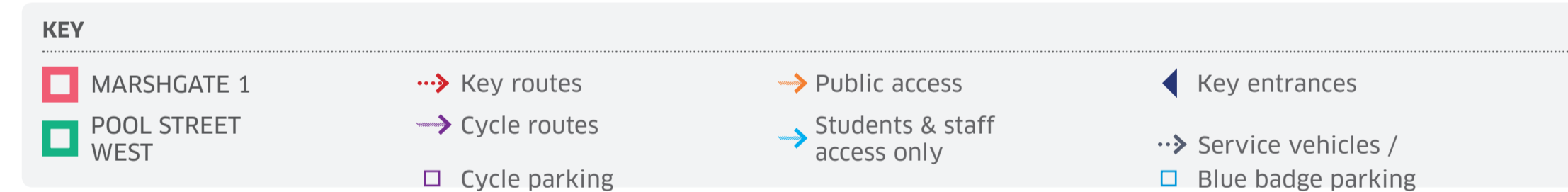
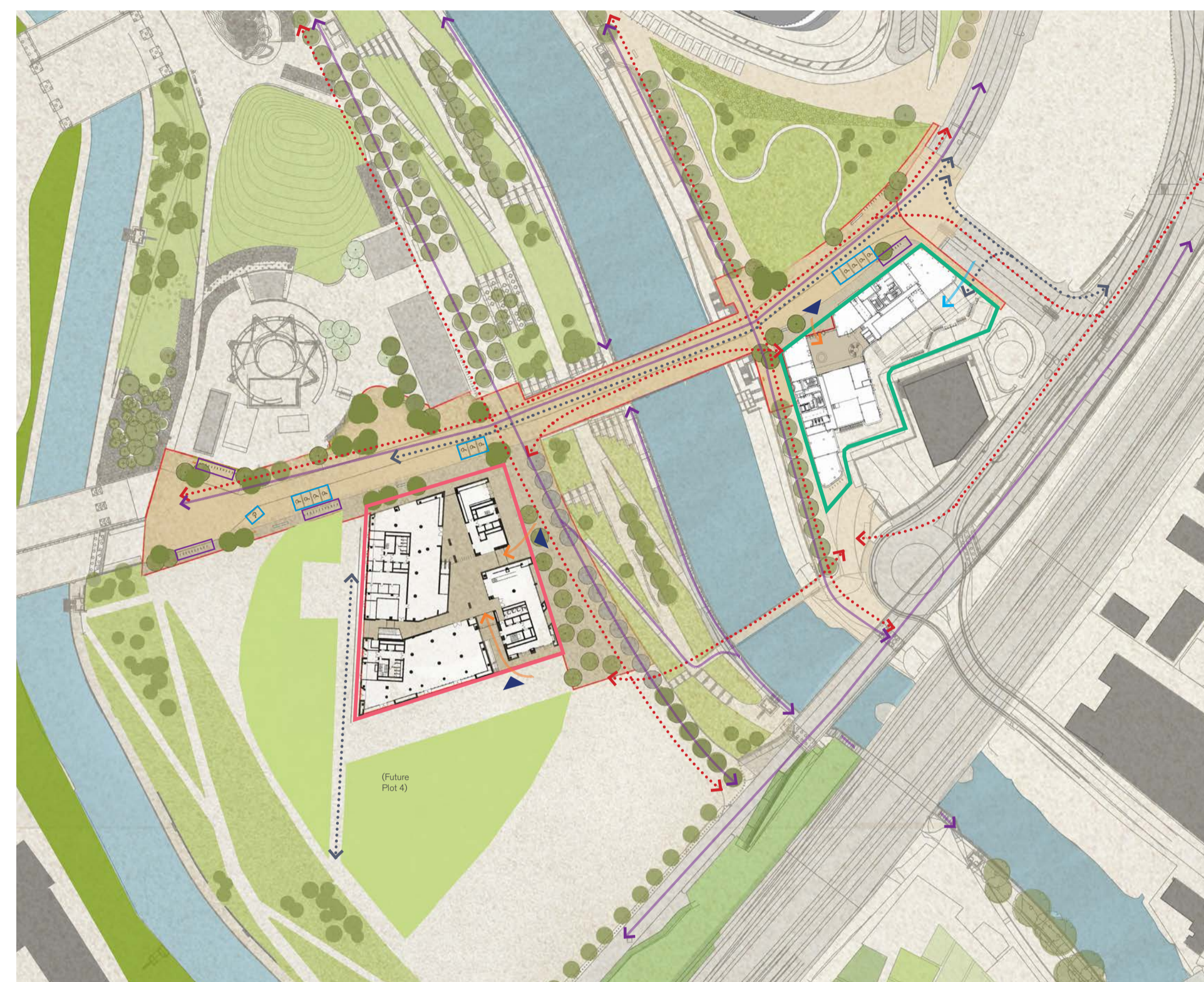
KEY FEATURES



Paving Materiality



Four differing concrete mixes are proposed, with smaller aggregate mixes nearest the river to align with the existing resin bonded gravel in the Park, and the aggregate size increasing in proximity to the buildings, as displayed in the material examples above.



Sketch of waterfront typologies



ards the H05 bridge



Phase 1 Planting



The promenade aims to create continuity and establish a cohesive North / South link through the park while giving the campus a distinct identity. Existing trees along the eastern boundary will be retained and integrated into the new scheme. As the promenade widens, the linear alignment is broken with a staggered arrangement that wraps into the central square.



Selection of outdoor furniture and materials for the public realm

05 | POOL STREET WEST

INTRODUCTION

This is the third and last public consultation event helping to shape the plans for Pool Street West prior to submitting the 'Reserved Matters' application to the Local Planning Authority later this spring.

Pool Street West will bring together academic spaces, student accommodation and local amenities.



Artist's impression of the entrance looking from the north of the site

LEAD ARCHITECTS



Oxo Tower Wharf

Lifschutz Davidson Sandilands (LDS) have gained an international reputation for the quality of both its architecture and its completed projects in a wide variety of sectors. LDS have designed buildings of a similar nature to Pool Street West, including JW3, an award-winning community centre in London and iQ Shoreditch, a mixed-use scheme of student housing, hotel and offices.

LDS are working with a wider team of technical consultants, including theatre, laboratory and sustainability consultants.

DESIGN UPDATES

Here are the latest design updates since the last consultation events in October 2017:

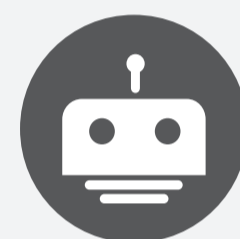
- Ground floor re-planned with more active uses to perimeter of yard
- 1 additional staircase added to each tower for fire safety
- 2 additional storeys added to each tower, within the existing building height, to accommodate more residential rooms
- Academic spaces developed in tandem with UCL user requirements, such as the design of Nature Smart laboratories and moveable furniture within the Slade Studio
- Material strategy for façades refined and developed (see section on the right)

ACADEMIC VISION

The academic vision for UCL East is deliberately innovative and ambitious. Pool Street West will house the **Future Living Institute**, which will explore global challenges such as planetary sustainability, understanding nature, environment and urbanisation, global communications, and social inclusivity. It will be truly multi-disciplinary and the first time UCL has created an institute cutting across five faculties.

The Future Living Institute aims to overcome the conventional barriers between research, education, enterprise and public engagement.

It will bring together researches across the following areas:



The **Experimental Engineering Labs**, which will provide new academic activities covering a wide range of unique and innovative fields of study. A centre for Robotics & Autonomous Systems will offer the opportunity to build robots from the nano to large scale and model their environments.



The **Global Disability Innovation Hub**, which will bring together cutting edge technology and lived experience. Academics, innovators, corporates and the local community will explore disability from a new perspective.



Culture Lab, which will offer teaching, research and engagement spaces, underpinned by new programmes in making, media, conservation & heritage, and public history. Facilities at Pool Street West will include an object-based learning laboratory and a London Memory Archive.



Nature-Smart Cities, which will be a research and teaching centre, focusing on three key themes: enhancing biodiversity of cities; understanding urban ecosystem services & wellbeing benefits; and engaging urban populations with their natural environment.



The Urban Room, as part of the **Global Future Cities**, a major public and community space, hosted by urban academics from across UCL, for debating the past, present and future of London. The Co-Labs will provide opportunities for the application of knowledge towards the improvement of human settlements worldwide.

MATERIALS

A range of tones provide contrast to the different façade components, with exposed aggregate concrete and rougher textures providing visual interest at lower levels. The cores have terracotta coloured pre-cast fins which accentuate the verticality of these elements.



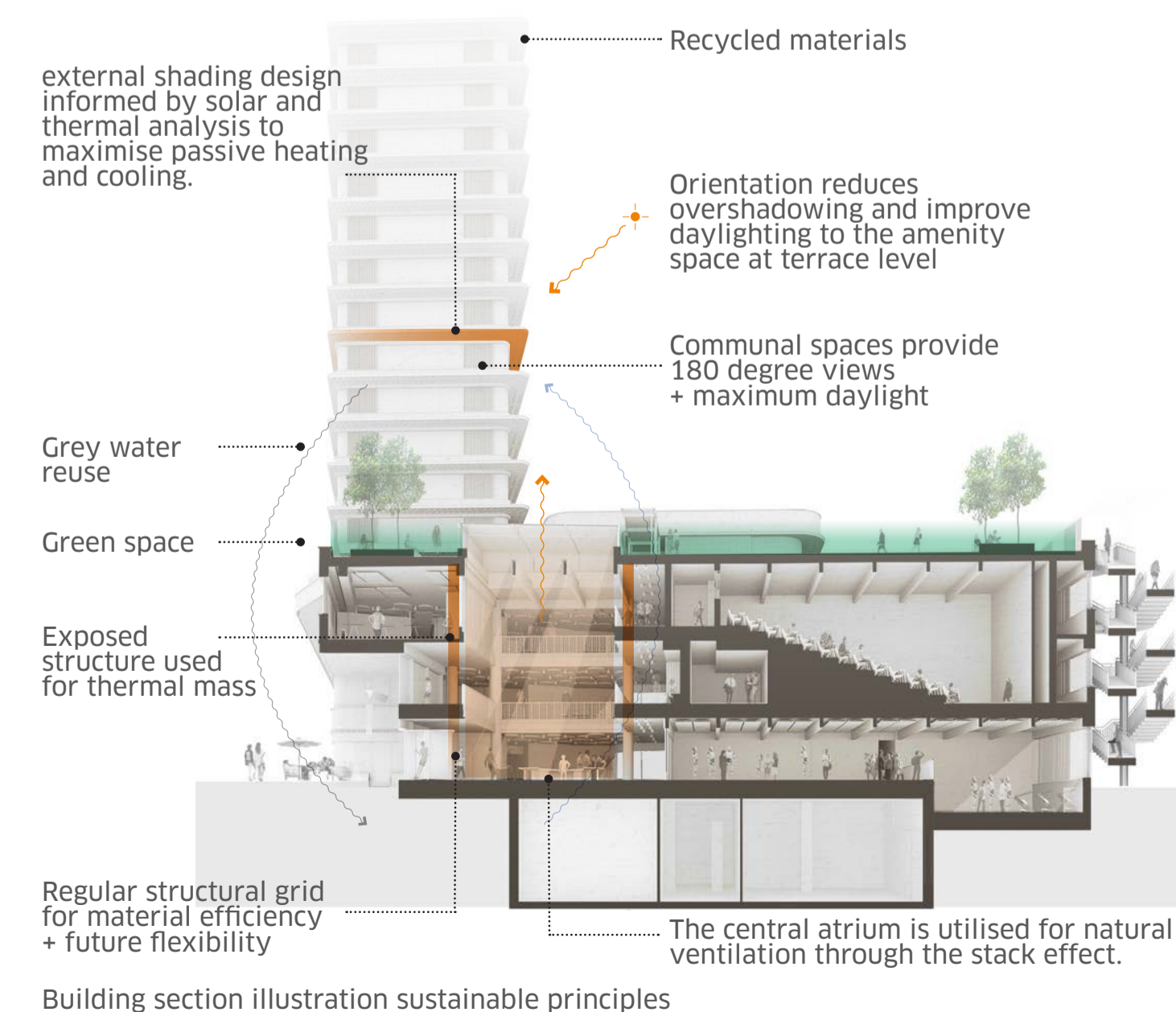
07 Glass

Opaque panels with reeded glass will provide animation to the façade as the sun moves around the building through the day.

08 Metal

Coloured metals add both warmth and visual interest to the façade, complementing the concrete.

SUSTAINABILITY



Building section illustration sustainable principles

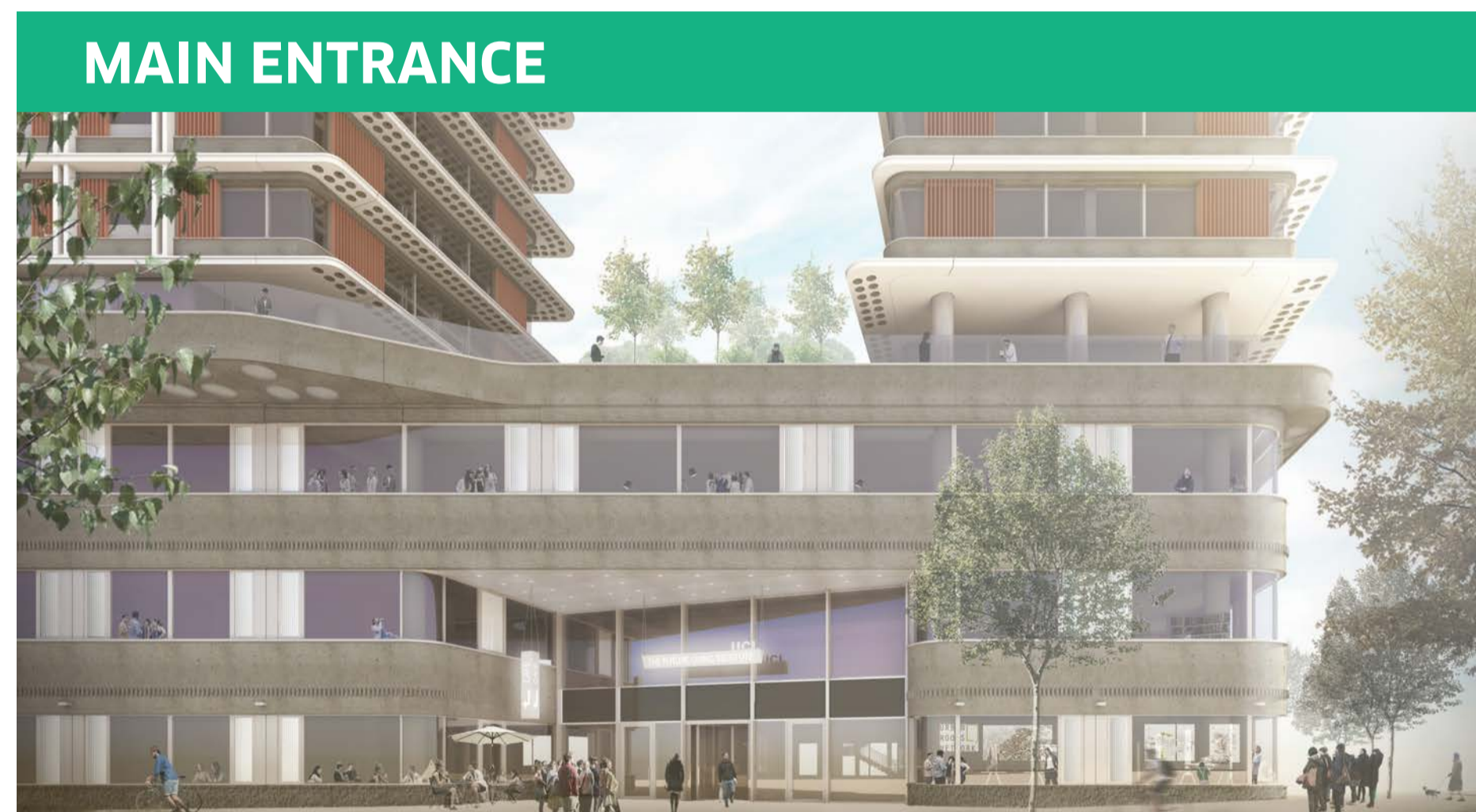
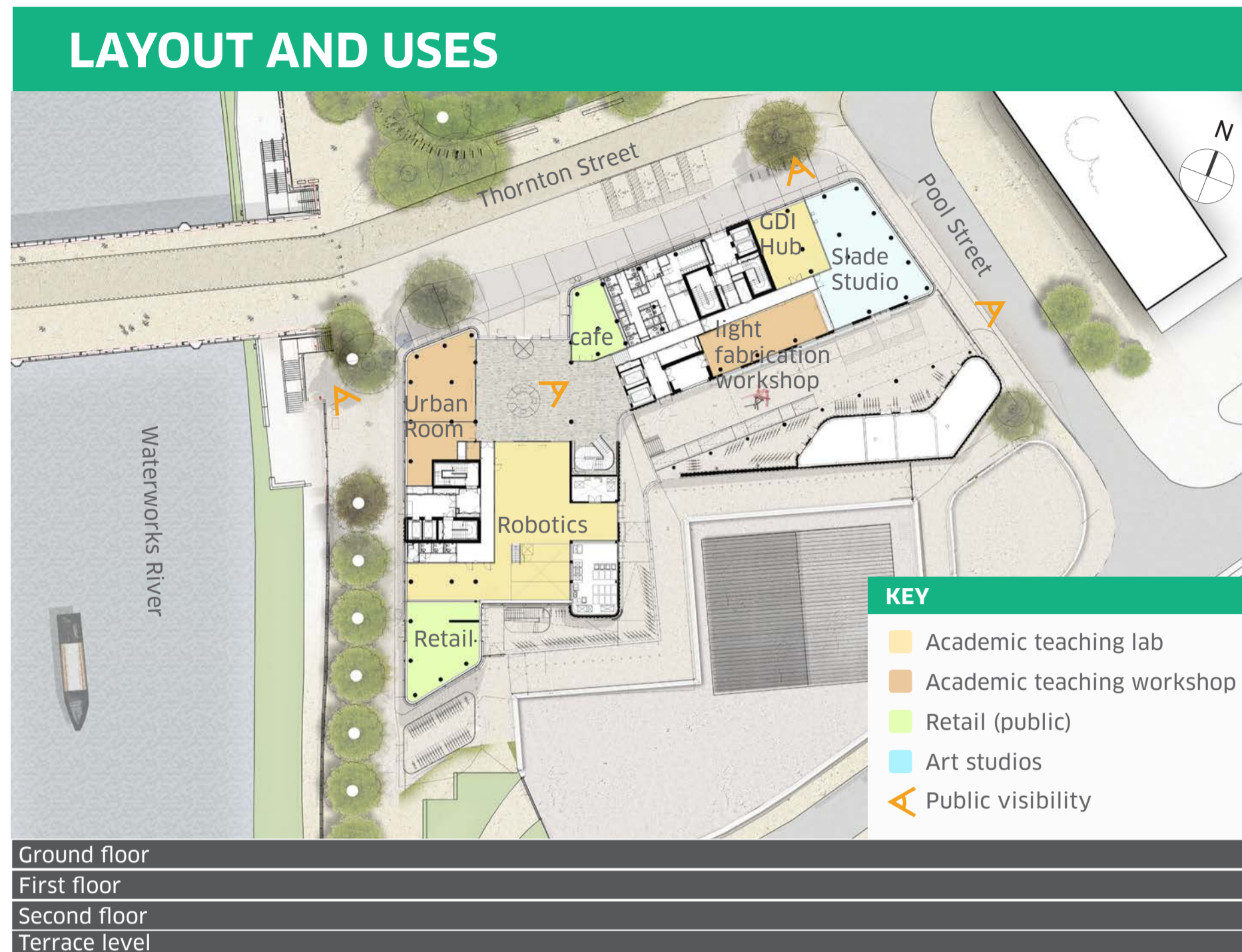
06 | PUBLIC ACCESSIBILITY & INCLUSIVITY

PUBLIC ACCESS & DESIGN

UCL East has established some clear objectives through earlier consultation on the illustrative masterplan, one of these is to provide interactive spaces for public engagement with the academic activities. This idea has been developed through the 'Fluid Zone' which encourages the public to access and engage with the academic building through active frontages, visible academic activities and events.

The public realm design aims to enhance the existing routes and better integrate with the wider context. Active frontages will be maximised at ground floor level – large glazed windows will allow views into the Slade Studios to see artists at work or exhibitions taking place in the Urban Room. There is direct access to the café and the convenience store from the public realm. The café and convenience store will serve the wider community as well as the UCL staff and students.

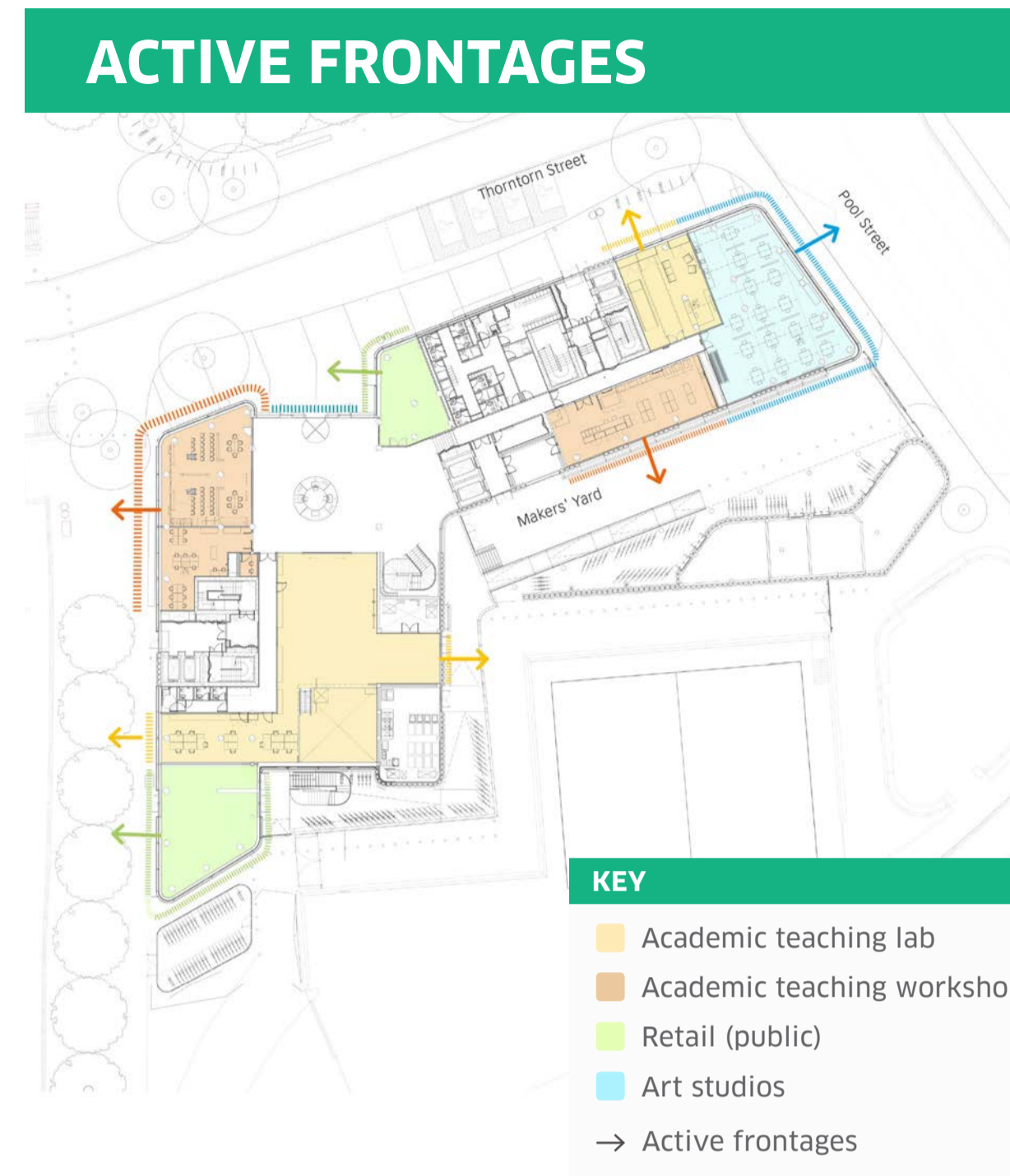
A key part of the 'Fluid Zone' design concept is an open and accessible entrance with an atrium above. Shared facilities and amenity space will surround the atrium, helping to create a dynamic and welcoming environment that encourages UCL students and staff, visitors and the local community to enter and spend time in the building. The atrium space will host public exhibitions and events. Large glazed screens to the Robotics laboratory will allow visitors to see the UCL scientists building and testing robots.



View from Thornton Street towards main entrance showing café space



View from Sidings Street, along Waterworks River with retail spaces



PUBLIC ENTRANCE & ATRIUM



Internal view of atrium from Thornton Street main entrance, demonstrating views into Robotics Laboratory and Urban Room

ACCESS FOR ALL

- Level access throughout the scheme
- Lifts distributed throughout the building; Evacuation lifts in case of emergency
- 4 blue badge parking spaces, with an additional 2 spaces for use during the Stadium match and event days
- Clear and intuitive wayfinding throughout the scheme, including Braille and raised lettering
- Tactile paving included within the yard in order to aid those with sight impairments
- Acoustic panelling throughout, aiding those with hearing impairments. Reception & larger teaching spaces have hearing loop systems
- A Changing Places facility is provided
- Wheelchair accessible showers and WCs, Unisex WCs are provided.
- A multi-faith quiet contemplation room
- Wheelchair accessible student accommodation provided

07 | ACADEMIC & STUDENT USES

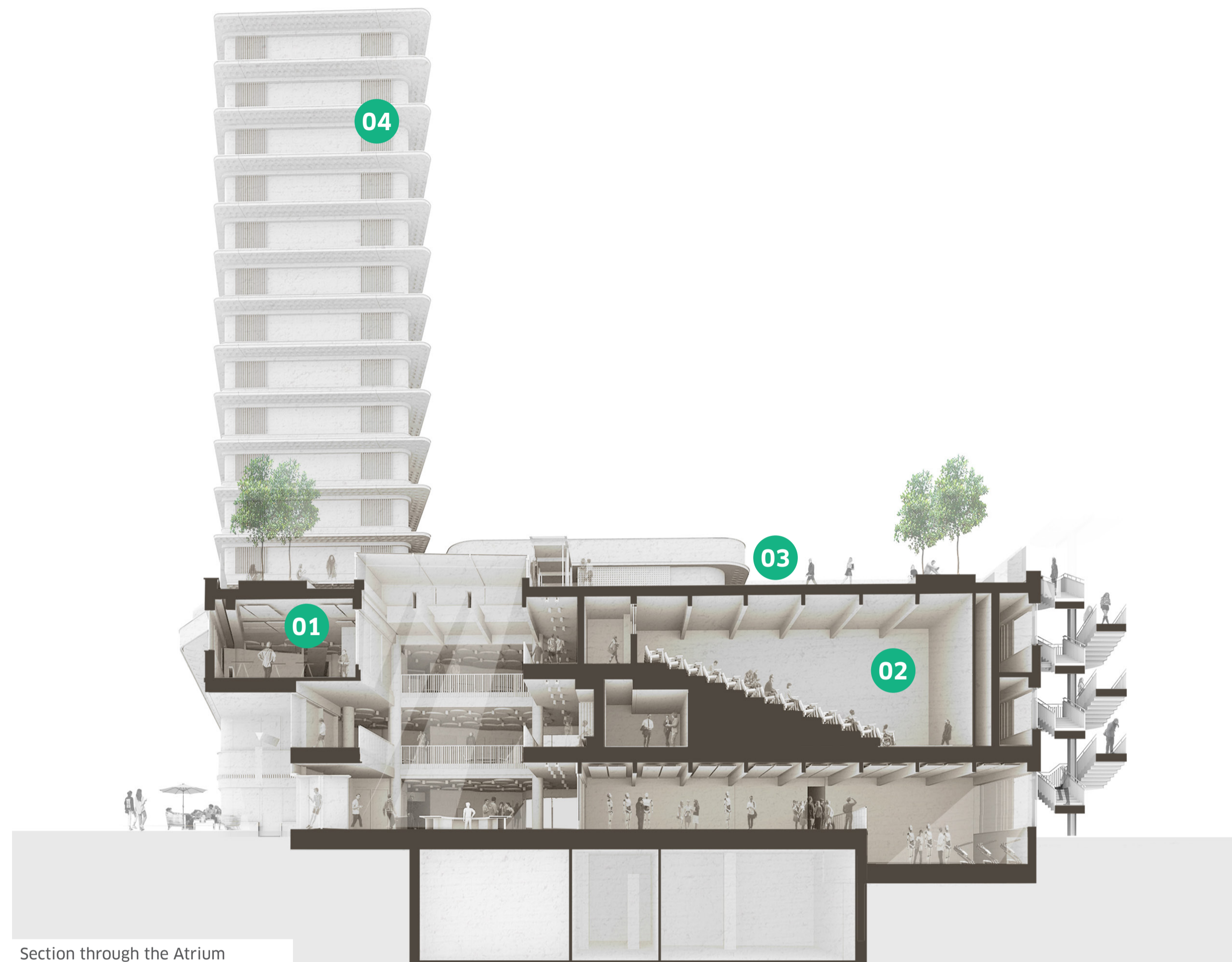
KEY FEATURES

Pool Street West provides circa 5,500m² of academic space, community and engagement uses, retail and commercial uses. There are 3 levels of academic space at the lower levels, a terrace shared between academic users and residents, and student residences arranged over the two towers. The student accommodation, which is accessed via the terrace, will include spacious communal spaces.

The terrace on the third floor will form the key external space for the use of building users and residents, and will provide a distinctive character.

The terrace will provide an intimate and flexible gathering space that will facilitate various activities. Its landscaping consists of a series of sheltered interconnected garden rooms, framed by formal hedges and timber seating. Flower beds punctuate the garden rooms throughout. In more open areas of the terrace, large raised timber decks act as versatile platforms that students can interact with in a number of ways. Trees will emerge from the raised decks in order to reduce the amount of wind. The floor of the terrace is paved with large granite stone slabs.

The terrace amenity space provides a range of outdoor areas for students to enjoy with views to north of the Park.



Section through the Atrium

01 WORKSPACE



View of the Urban Room in use

02 CINEMA / LECTURE



View of the teaching cinema / lecture theatre

03 TERRACE



Illustration of how the terrace level is occupied: The terrace layout has a series of garden rooms or spaces for people using the building.

The garden rooms provide sheltered and intimate space for students and faculty to congregate. These are composed of three landscape layers:

- Formal hedge planting to enclose the spaces
- Ornamental planting with aromatic and seasonal flowers & potentially plants grown by the students
- Trees for verticality and pockets of shade

04 STUDENT LIVING



View of the residential tower
Communal living space
Typical bedroom

OVERVIEW:

Student residential floorspace of circa 15,000 m² – about 520 student bedrooms (including wheelchair accessible and adaptable rooms).

Student residential accommodation arranged in clusters of 8-10 students including:

- Self-catered, en-suite bedrooms with generous shared kitchen / living / dining facilities
- Wheelchair accessible rooms
- Further communal spaces at terrace level, including a study area, music practice room and lounge
- Generous views out towards QEOP and Stratford
- Optimised storage

LAYOUT AND USES



KEY

- Student residential bedrooms
- Student residential communal living space

Fourth to fifteenth floor

08 | MARSHGATE 1

INTRODUCTION

This is the second in a series of public consultation events for Marshgate 1. These boards present the developed designs for this plot of UCL East.

In the summer of 2016, UCL appointed architects Stanton Williams to lead on the detailed design for Marshgate 1.

UCL East has established some clear objectives through earlier consultation on the illustrative masterplan. A 'Fluid Zone' is provided on the first two floors of the building, stretching out to the promenade, with academic activities and exhibition spaces accessible to the public.

The academic vision for Marshgate 1 including a summary of activities and uses are shown on the right.

LEAD ARCHITECTS



Central Saint Martins

Stanton Williams have extensive experience of working on complex and sensitive sites, and of working with clients to create spaces which promote interaction between building occupiers and the public: aspects of design which relate directly to the aspirations for Marshgate 1.

There are a number of technical consultants involved in the project from structural to lighting engineers and ecologists.

THE ACADEMIC VISION

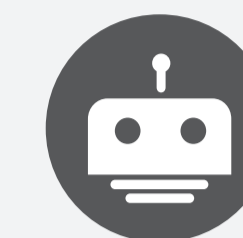
Marshgate 1 will serve as the centre for the UCL East academic vision. It will feature:



The **Culture Lab**, which will offer teaching, research and engagement spaces, underpinned by new educational programmes in making, media, conservation & heritage, and public history. Activities and facilities at Marshgate will include a media lab, an object-based learning laboratory, and a suite of conservation facilities.



The **Global Future Cities Co-Labs**, which will be organised around a series of shared spaces, specialising in providing opportunities for collaboration and application of knowledge towards the improvement of human settlements worldwide, and the strategic use of ICT in sustainable, prosperous urban futures.



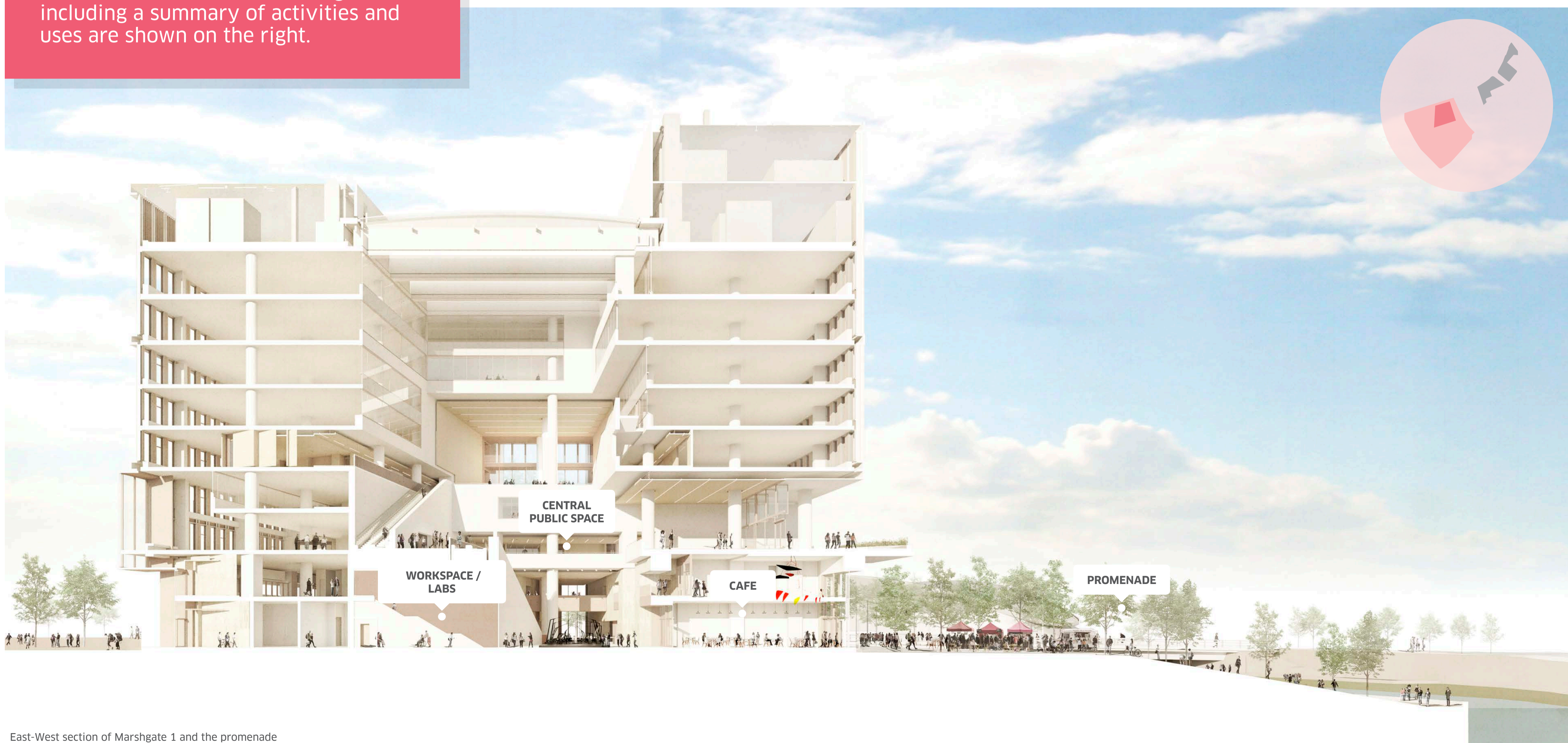
The **Experimental Engineering Labs**, which will comprise new academic activities in innovative and multidisciplinary fields of study, including advanced propulsion and future manufacture.



The **Academy of Innovative Applied Finance**, which will provide leadership and training for future financial and business leaders, enabling close collaboration between research, financial innovation, industry, and government.



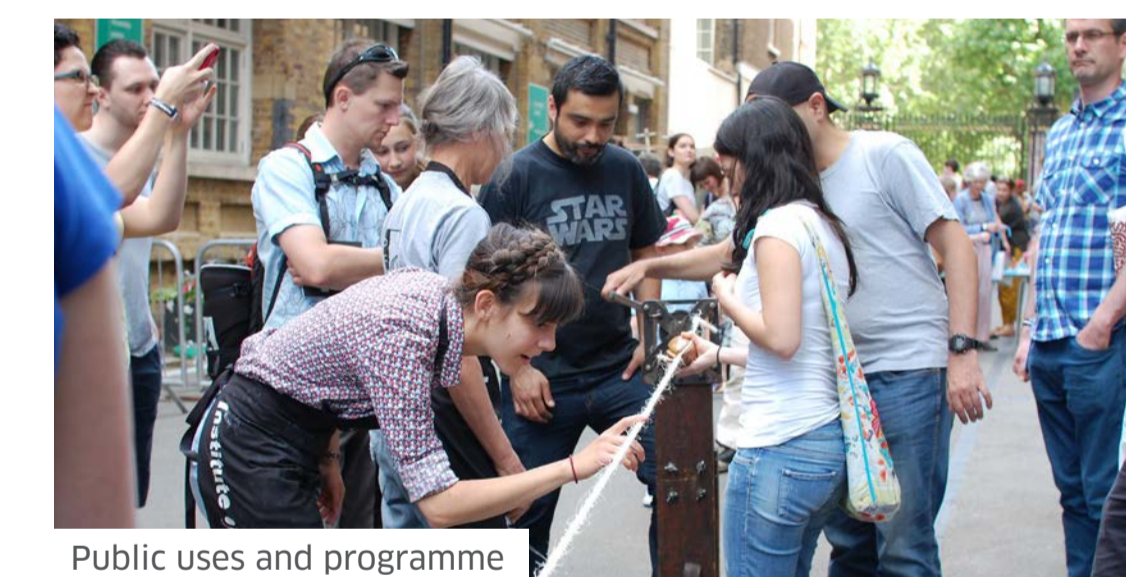
The **Institute of Making Big**, a multidisciplinary research club for those interested in the made world: from makers of molecules to makers of buildings, synthetic skin to spacecraft, soup to diamonds, socks to cities.



East-West section of Marshgate 1 and the promenade



Café and social study space



Public uses and programme



Flexible workshop space



Laboratory space

09 | DEVELOPED DESIGN

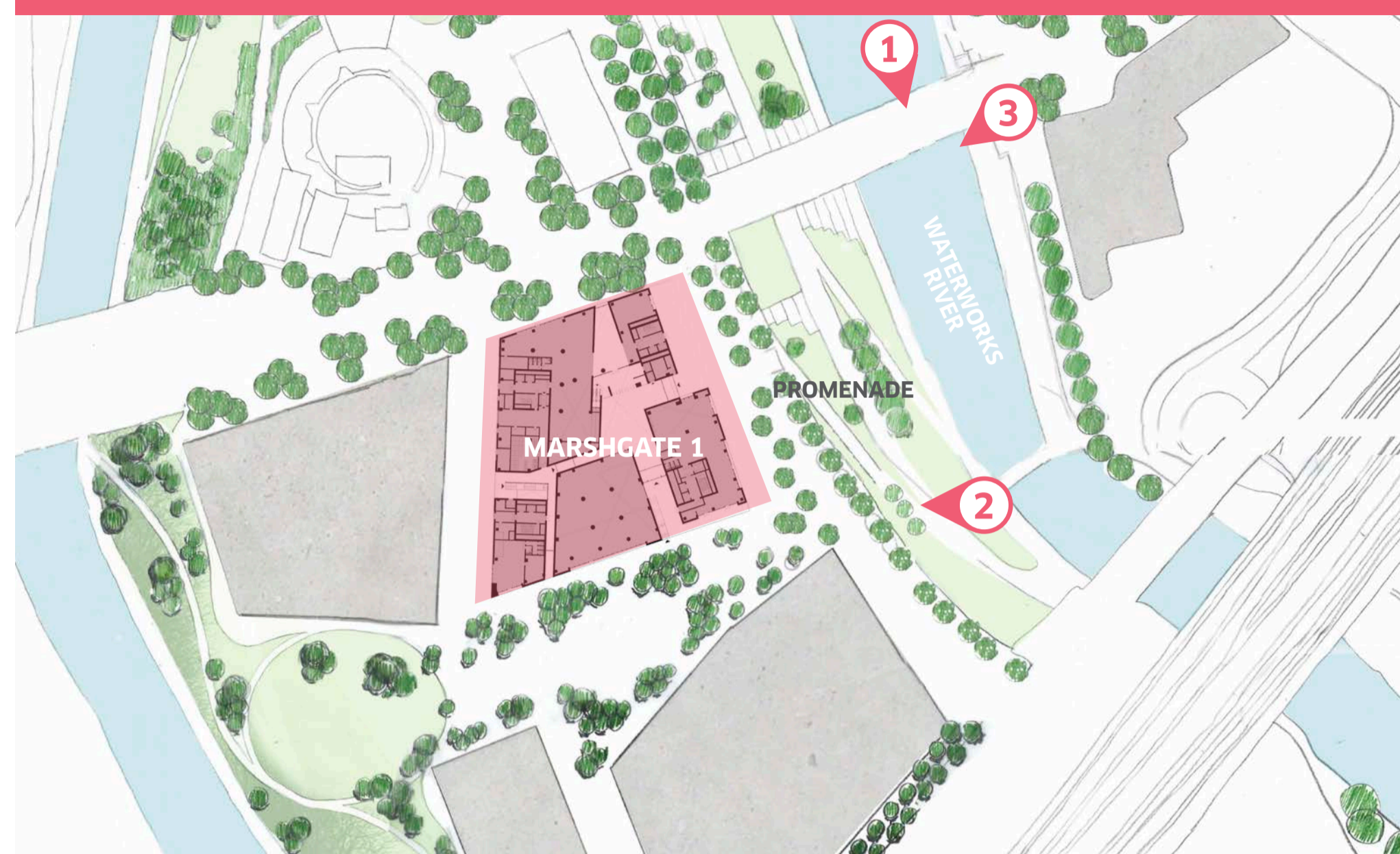
KEY FEATURES

The approach to landscape will build upon established landscape of the Park as well as establishing the unique character of UCL East. Finishes will be explored that are appropriate and complementary to the setting but also have a strong relationship to the materiality and identity of the building.

The building massing responds to both the existing context and the masterplan. The strong sculptural form and primary openings can be clearly read from a distance, expressing the buildings 'neighbourhoods', primary collaboration spaces and terraces. These openings will be active and engaging. They will also create a visual connection to the wider Park internally and externally, including Pool Street, Waterworks River and promenade.

It is proposed that the Fluid zone façade is developed with a similar language of exposed aggregates, texture, colour and evidence of the 'making' process. It is important that the façade is seen to visually 'grow' from the landscape. The design team have been investigating various construction techniques that will allow a monolithic, textured facade to be developed.

'FLUID ZONE' CONCEPT AND THE PUBLIC REALM



Illustrative view of the exterior along Waterworks River



Illustrative view of Marshgate 1 looking south

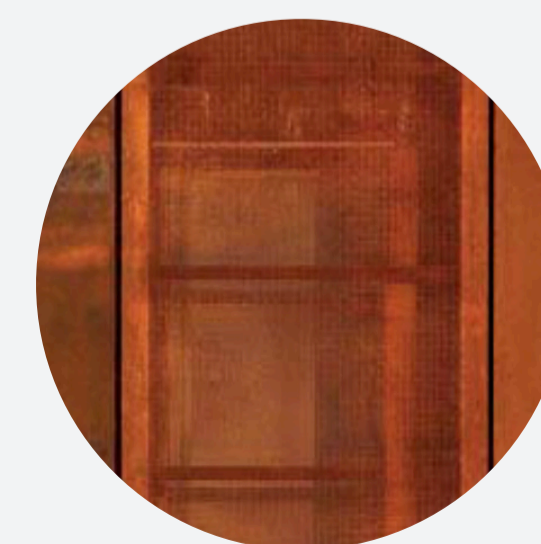


View from East along Thornton Street

APPROACH TO MATERIALITY

OVERVIEW:

- Large glazed sliding doors open up to the main entrances which allow large items to be moved into the base of the atrium for exhibition or work.
- The façade treatment of the Level 00 and Level 01 Fluid Zone consists of full height concrete monolithic walls incorporating large areas of double glazed curtain wall.
- Precast concrete at upper levels with finish and tone to compliment the Fluid Zone appearance.



WEATHERED STEEL CLADDING
FACADE OPENINGS



CASTING INTO CONCRETE
GROUND / FLUID ZONE



LAYERED CONCRETE
GROUND / FLUID ZONE



EXPRESSED FORMWORK
UPPER FLOORS



TRANSITION IN FORMWORK
UPPER FLOORS

10 | PUBLIC ACCESSIBILITY & INCLUSIVITY

KEY FEATURES

The key concept of the 'Fluid Zone' on lower levels encourages the public to access and make use of the academic building through active frontages, exhibitions and events. Internal spaces are seen as an extension of the outdoor public realm, blurring the boundary between external and internal as well as public and private space.

Using the analogy of streets and courtyards, a plan has been developed around a series of generous internal 'streets' and a central 'courtyard', all open and accessible from the external public realm and responding to the access and hierarchy of movement across the wider site.

These spaces are fully accessible and capable of supporting a range of different activities and events including, at the heart of the building, the potential for a central public space where vertical connections into the higher levels create glimpses of the academic neighbourhoods above.

Large doors open up to both the Institute of Making (workshop space) and the public café, allowing internal programmes to spill out onto the adjacent landscape and ensure the threshold between external and internal space is as permeable as possible. These doors can be kept open in the summer, enhancing the natural ventilation of the atrium and the connection from the landscape, allowing the internal public space to be used as a route across the site and campus.

LAYOUT AND USES



Ground floor
First floor

CENTRAL PUBLIC SPACE - GROUND FLOOR



Illustrative view of the internal public space (ground level)

GROUND FLOOR ENTRANCE



External view towards north-east entrance

CENTRAL PUBLIC SPACE



Illustrative view of the central space (ground level)

OVERVIEW:

- The 'Fluid Zone' incorporates active frontages, highlighting the variety of publicly engaging uses within the building, as well as publicly accessible, generous, inviting entrances/routes through the ground and first floor
- The landscape around the building is designed to allow academic programme and meanwhile uses to occupy the external public realm
- The shifting, overlapping university building and central public space is visible from the public realm at ground floor
- The expression within the building of each university neighbourhood and its individual character is evident, strengthening the connection between private and public space within the building
- The atrium draws light down into the ground floor, whilst allowing the urban quality of the lower floors to extend upwards into the higher levels

11 | ACADEMIC & STUDENT USES

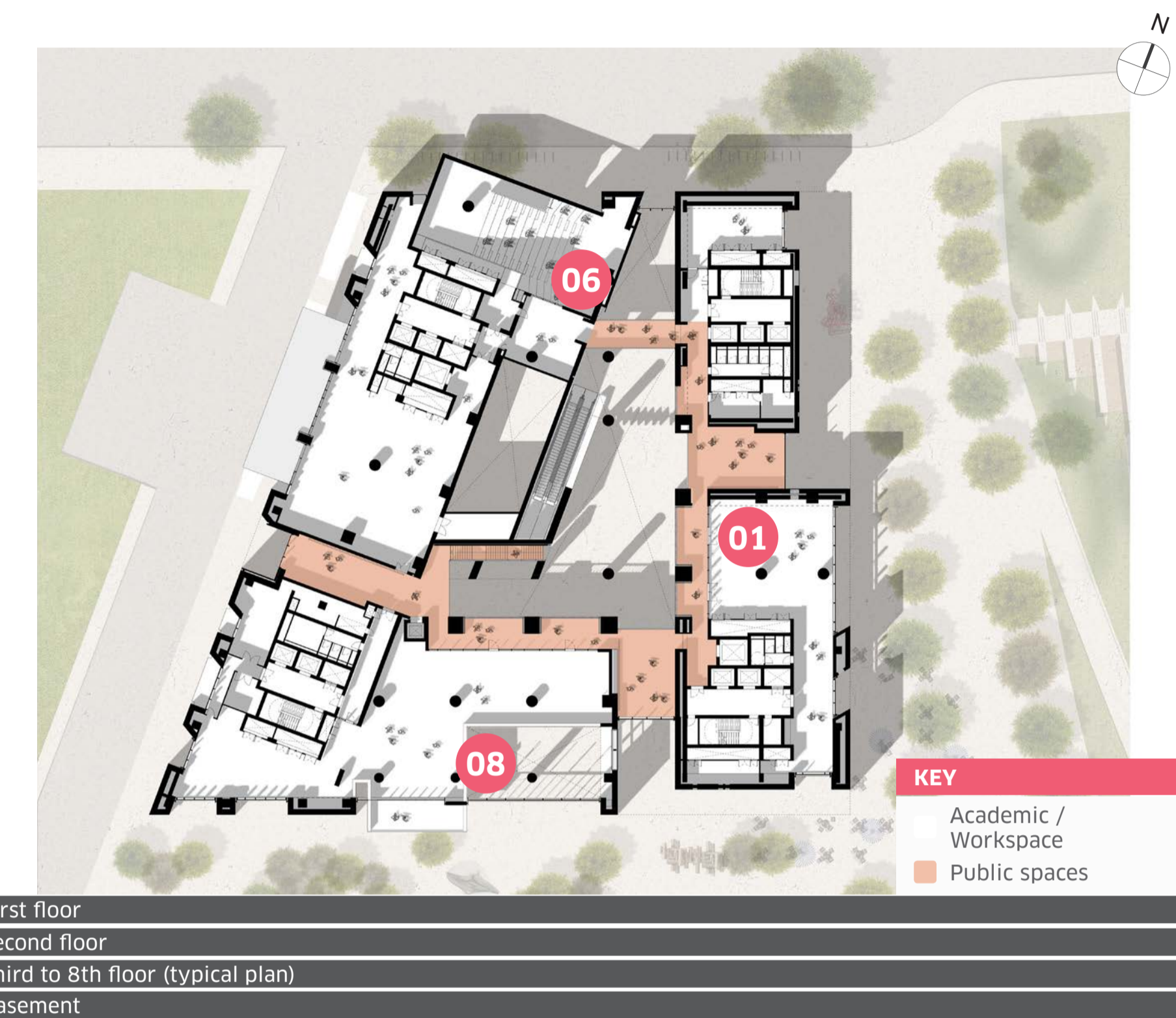
INTERNAL USES

Marshgate 1 has a series of interconnecting spaces for UCL's academic and student use. The academic vision for Marshgate 1 is further illustrated here, outlining the wide range of activities to take place in the building.

Some key features include:

- Public space within the ground floor
- Academic space, including 2 levels dedicated to specialist labs
- Administrative space, supporting staff and academic functions
- Shared amenities, offering a public cafe and community and engagement spaces
- Flexible, adaptable and sustainable design rated BREEAM 'Excellent'

LAYOUT AND USES

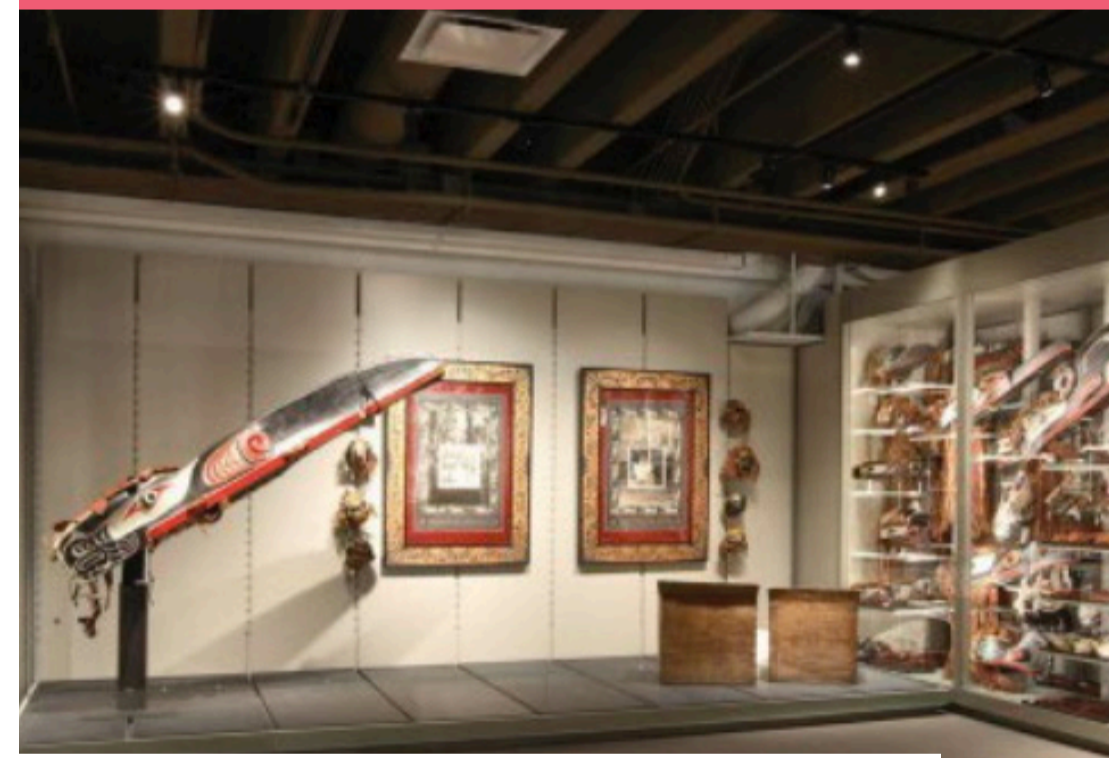


UPPER FLOORS



Illustrative view of the academic arrival space

01 CULTURE LAB



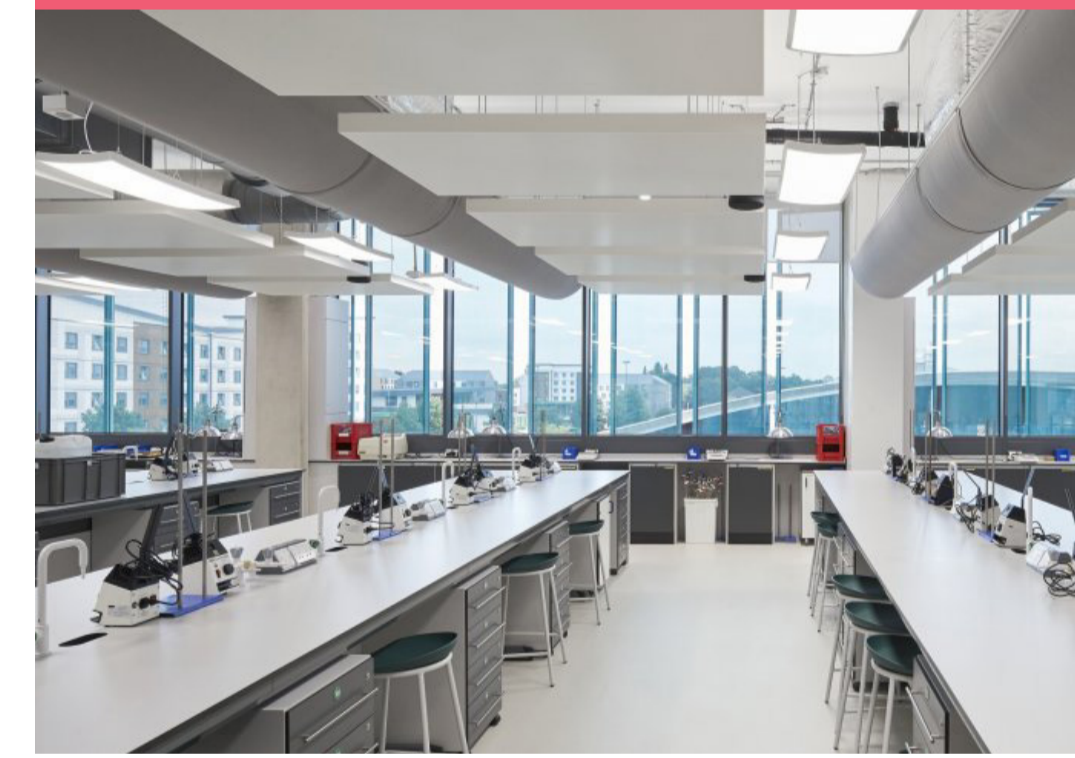
OBJECT BASED LEARNING - 1st floor

02 MICROBREWERY



RESEARCH INSTITUTE - Upper floor

03 LABORATORIES



IMAGING. X-RAY, MRI, ULTRASOUND LABORATORIES - Upper floors

04 VEHICLE BAY



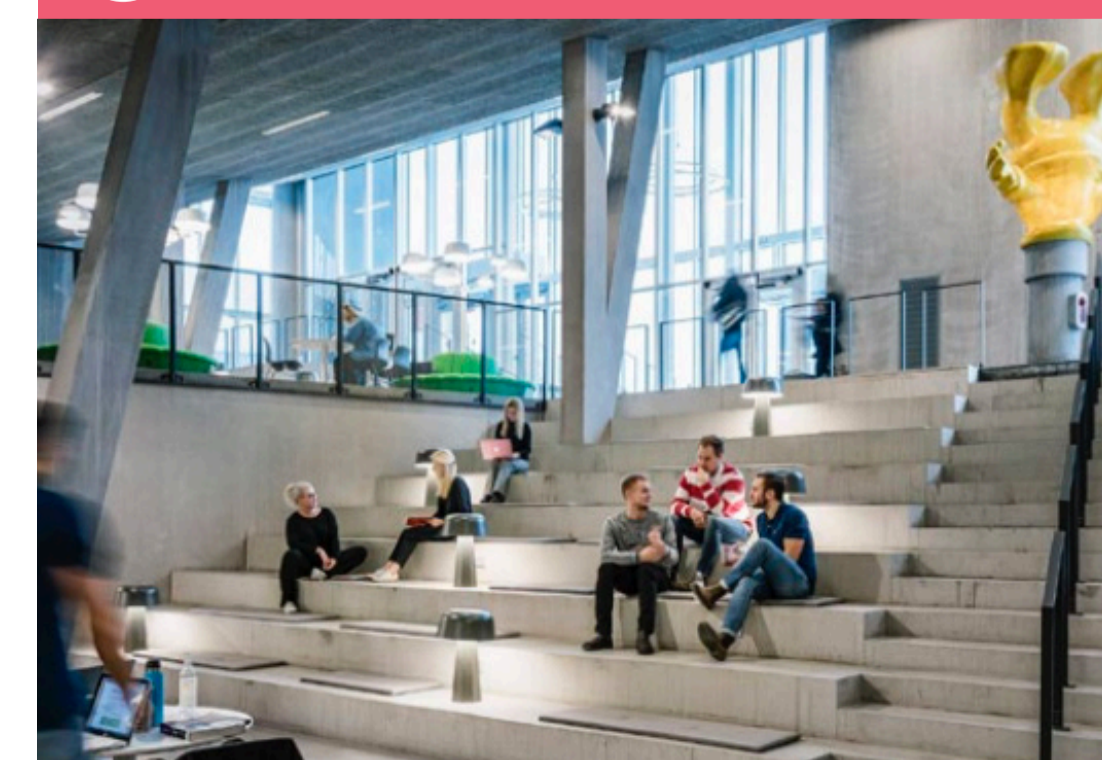
WORKSHOP SPACE - Ground floor

05 PUBLIC & CULTURAL ENGAGEMENT



EXHIBITION / CLASSROOM SPACES - Throughout

06 LECTURE THEATRE



THEATRE 150 PERSON CAPACITY - Ground floor

07 CAFE



PUBLICLY ACCESSIBLE CAFE - Ground floor

08 INSTITUTE OF MAKING



MAKE SPACE / SUPPORTING AREA - Ground floor