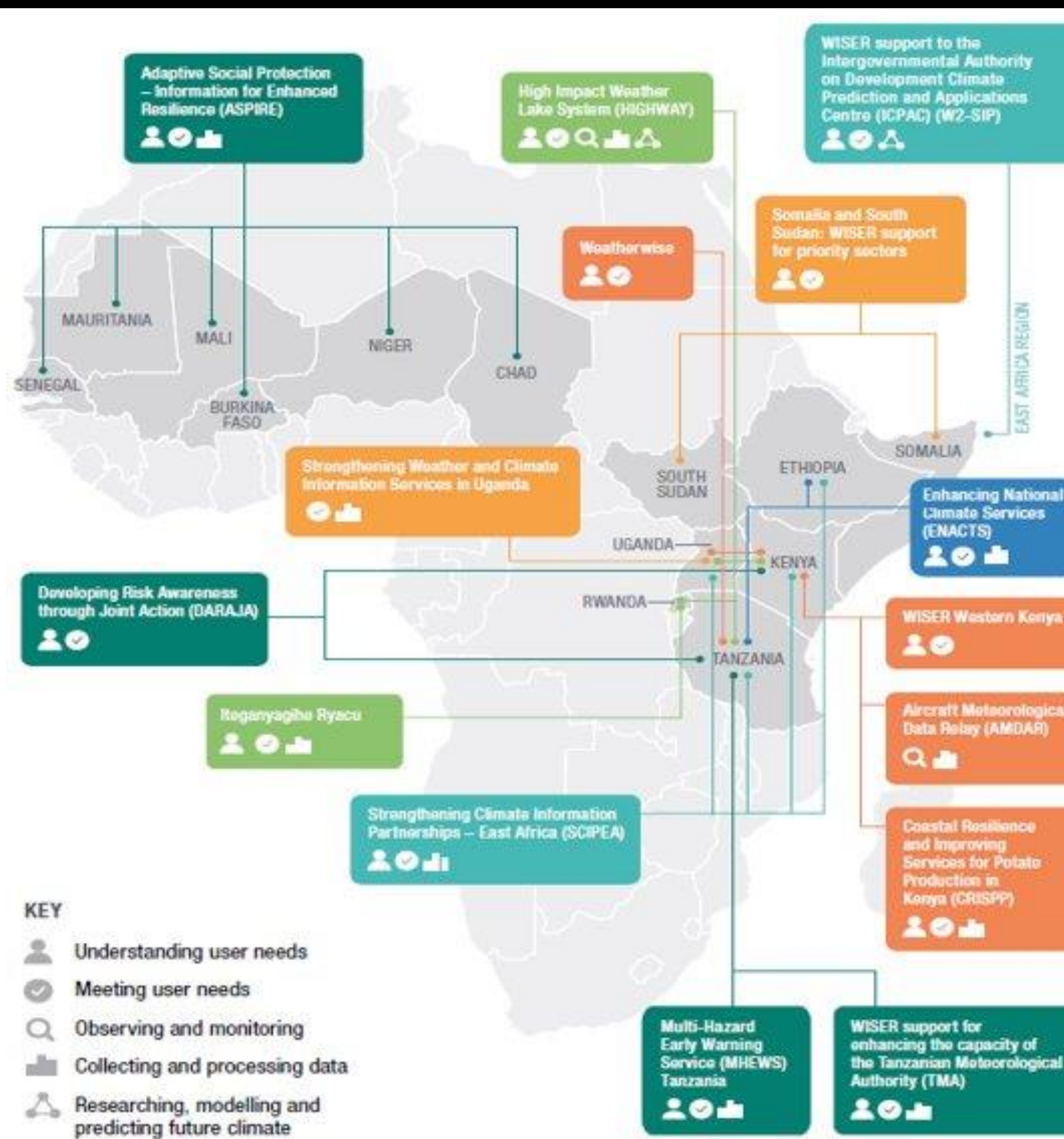


The Weather and Climate Information Services (WISER) programme aims to deliver transformation in the generation and use of co-produced weather and climate services to support decision making at local, national and regional levels, building resilience to the impacts of climate change.

WISER is guided by a range of principles, which emphasise:

- Co-production
- Gender, equity and social inclusion
- Innovation
- Partnerships across the value chain
- Sustainable change
- Transformational effect

## Key achievements and lessons from WISER phases 1 and 2 (2016 – 2021)



- Co-design during inception**  
Ring-fence an inception phase of sufficient length to allow the co-design of projects and programmes with stakeholder engagement at all levels.
- Develop synergies**  
Identify regional synergies and design project and programme activities to align with national and regional priorities to increase the likelihood that climate services will be impactful.
- Focus on gender and inclusion**  
Design programmes to be gender-responsive and inclusive by having clear plans to promote equal access and inclusion to co-produced climate services.
- Implement immersive co-production**  
Move from consultative to more immersive co-production to deliver relevant, high-quality services and products while building strong networks and trust. [Find out more](#)
- Develop capacities**  
Plan to continuously develop capacity throughout implementation to improve and sustain a range of capabilities for all actors involved in the climate service value chain.
- Monitor and gather evidence of impact**  
Co-design and implement mechanisms and strategies as part of the inception phase to support Monitoring, Evaluation and Learning (MEL) throughout implementation.
- Consider sustainability**  
Start planning for sustainability in the inception phase and include in project proposals to ensure that the necessary support is available to facilitate effective transitions, scaling and replication of activities.

## WISER Africa (2022-2026)

**Vision**

WISER Africa will benefit 6 to 8 million people disproportionately impacted by extreme weather, seasonal events and climate change by improving resilience and improving response preparedness through the use of WISER and other weather and climate information services (WCIS).

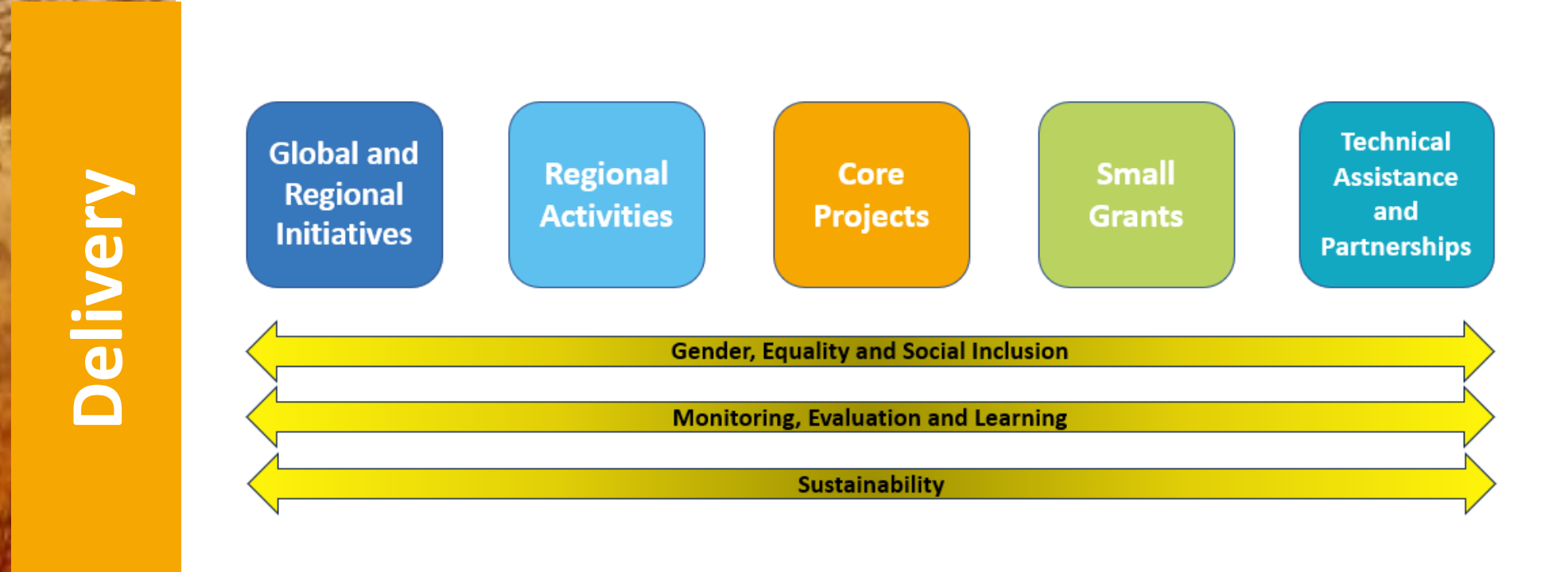
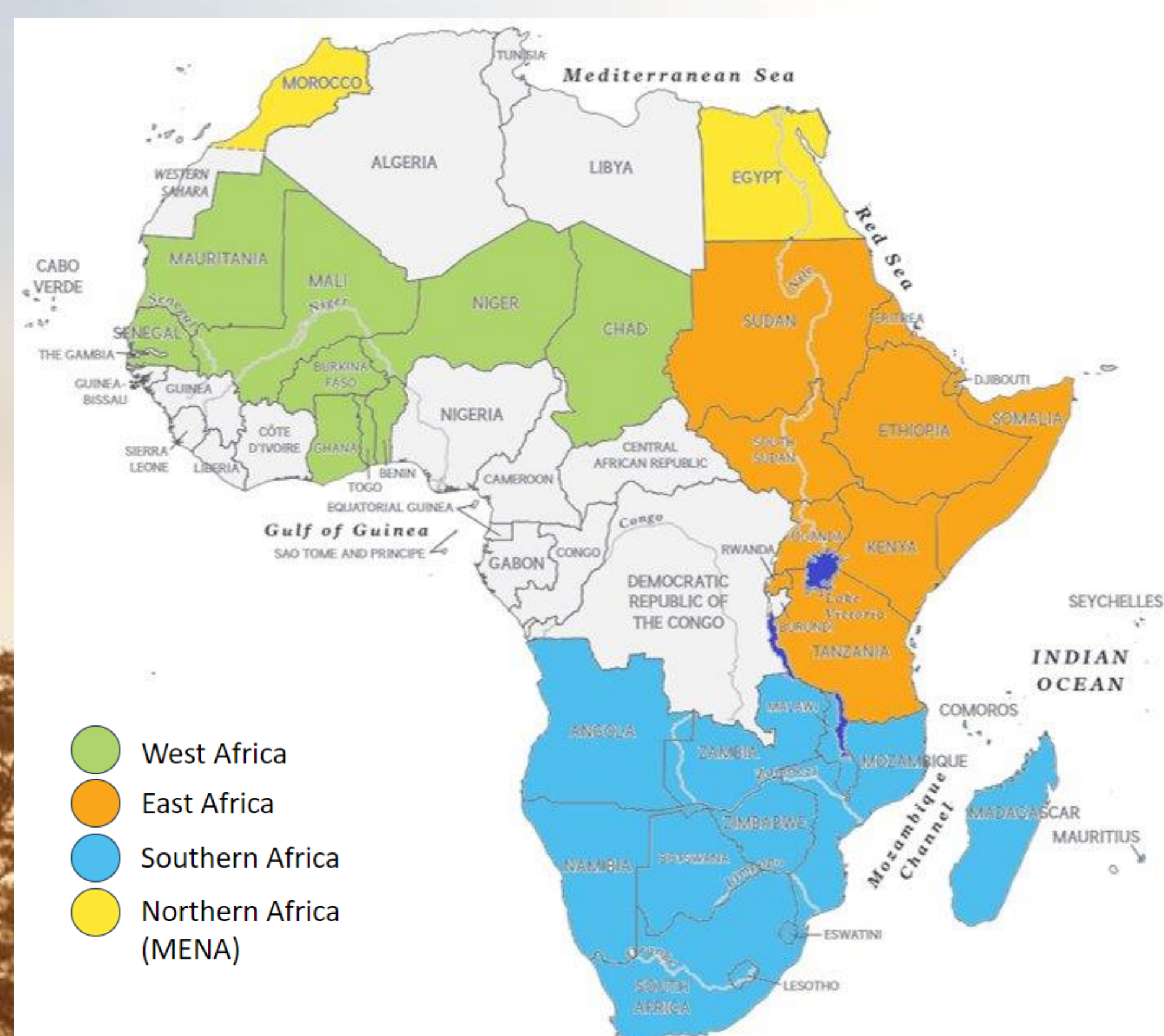
To achieve this WISER will increase the uptake and user of co-produced WCIS to support decision making at location, national and regional level.

**Approach**

WISER Africa has geographically extended from previously working in East Africa and the Sahel, to **East, West and Southern Africa**.

It will adopt a **regional approach** to:

- build on WISER learning
- maximise impact
- ensure that WISER is contextually relevant



**Core Projects**

Autumn Calls for project concepts starts (2022)  
February First Round Project implementation starts (2023)  
June End of Project Activities (Reporting / Review remain ongoing) (2024)  
December Projects close (2025)

Across each of the three regions – East, South and West - there will be one or more large scale projects.

**TAP**

**Technical Assistance & Partnerships (TAP) Regional Approach, the way the Met Office provides targeted support based on skills and experience, comprises of seven elements:**

1. Policy Action Mapping
2. Enhanced seasonal forecast Capability
3. Enhancement of impact- based forecasting to inform Anticipatory Action
4. Business Development
5. Scientific Development
6. Capacity Development
7. Continued Stakeholder Engagement including collaboration with other programmes and regional activities