

Welcome

This is the 41st edition of the Academic Services Newsletter, a consolidated source of information that supports all UCL staff managing the student lifecycle. If you know any colleagues who would like to receive these monthly newsletters, or have any new starters on your team, they can [sign-up here](#). Previous editions are available via the [Archive](#).

Need to Know

Late Summer Assessments



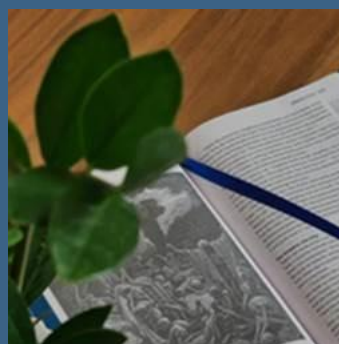
Arrangements for LSA August-September 2022

29 July: Deadline for updates prior to Module Catalogue refresh



Learn more about making final module amendments for inclusion in the catalogue

Enrolment and Re-Enrolment Timeline 2022



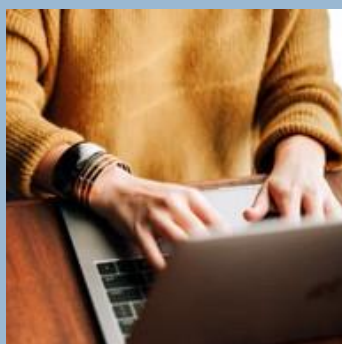
Information regarding Enrolment and Re-enrolment for 2022

Students moving to CRS during the 2022-23 academic year



Assistance required with data collection

Extenuating Circumstances (EC) to be managed in Portico from next years



The new EC system is being launched to support changes to EC regulations that will come into effect

Coming Soon: Academic Manual 2022-23



Publication due for early August

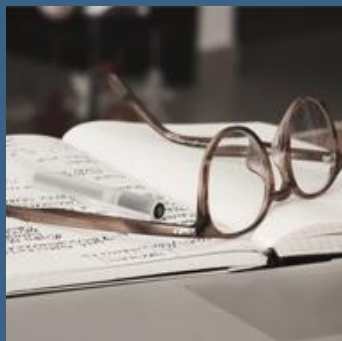
next academic year. Find out more.

[Update: External Examiner report form and departmental response](#)



We have made some tweaks to the External examiner report form and how this and your departmental response is reviewed

[External Examiner Fees, Expenses and Report FAQs](#)



Refer to the FAQs for questions on External Examiner Fees, P60, Payslips, Expenses, Payment process and Annual Report process

[Pre-Board External Examining tasks](#)



These tasks should already have been completed, if not, please do so ASAP: check status of External Examiners, assign modules for the 2021-22 session & enter BoE dates directly onto Portico

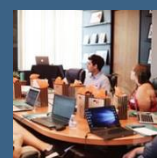
[Assessment Query Forms – Findings Main 2022 Central Assessment Period](#)

Overall online assessment query rate over 57,590 candidates was 2.40% this includes claims of a technical failure and those user errors that would only arise during an online assessment



[Admissions Transformation](#)

Transforming our student admissions service for 2023 and beyond. Find out more



Key dates and deadlines

Further dates are also available via:

- [SRS Calendar 2021-23](#)
- [Assessment and Exam Board Schedule 2022](#)
- [Curriculum planning timescales](#)

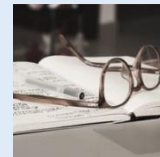
- | | | |
|----------------|---|---|
| 25 July | - | LSA timetable published to students |
| 25 July | - | Deadline for LSA Exam Papers to be submitted to the Central Assessment Team |
| 29 July | - | Deadline for updates prior to Module Catalogue refresh |

- 1 August** - Initial Teacher Education, applicant transfer begins (creating enrolment record) and pre-enrolment starts for students who meet all the entry requirements
- 22 August** - Continuing students' re-enrolment starts for UG and PG
- 23 August** - PG pre-enrolment starts
- 30 August** - UG pre-enrolment starts
- 30 August** - Module catalogue republished
- 12 September** - Module selection opens for new students

Resources and Guidance

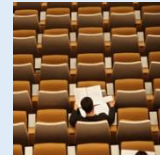
[Managing Centrally Managed Assessments on AssessmentUCL](#)

Guidelines & Training for ELOs and TAs



[Mark Entry Quick Guides](#)

Quick Guides available to assist with many mark entry topics



[External Examining Webpage](#)

Refer to the External Examining Webpage for FAQs, Moodle access, Timeline of Tasks and Key Contact details and News items



[External Examiner UCL Credentials \(IT, Moodle, AssessmentUCL access\)](#)

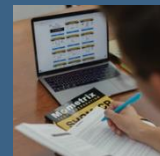
Board teams can now run a report to retrieve their External Examiner's UCL credentials for IT/Moodle access



In case you missed it

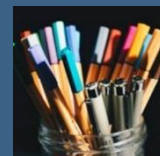
[Interruptions and Return to Study](#)

On the 26th June, the 3-month interruption return to study window opens for students who are due back at the start of the next academic year. This is the process they need to follow



[Core Programme Information](#)

Core Programme Information to be published in August



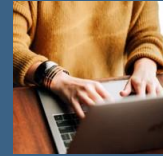
Graduate Route Update

Reminder of the reporting timescales for the Graduate Route



Programme Summary Project update

Changes to the plans for programme summaries



Module Selection

90% of students submit their preferred modules for next academic year



Community News

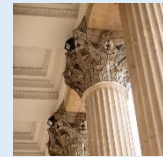
CPD opportunity to learn more about managing education quality at UCL

We are inviting expressions of interest from professional service colleagues to be involved in the annual Internal Quality Review (IQR) process as Administrative Secretary



Join TA Talk and stay connected

Sign up to [TA Talk](#) on Teams to connect with other UCL Teaching Administrators and receive notifications of important updates on student lifecycle activities. [The Community of Practice](#) is also providing opportunities to stay in touch whilst working remotely



Why am I receiving this?

You are receiving this as you are currently on our Academic Services mailing list, and key updates are being consolidated into this monthly newsletter. If you wish to be removed from the mailing list, please [click here](#).