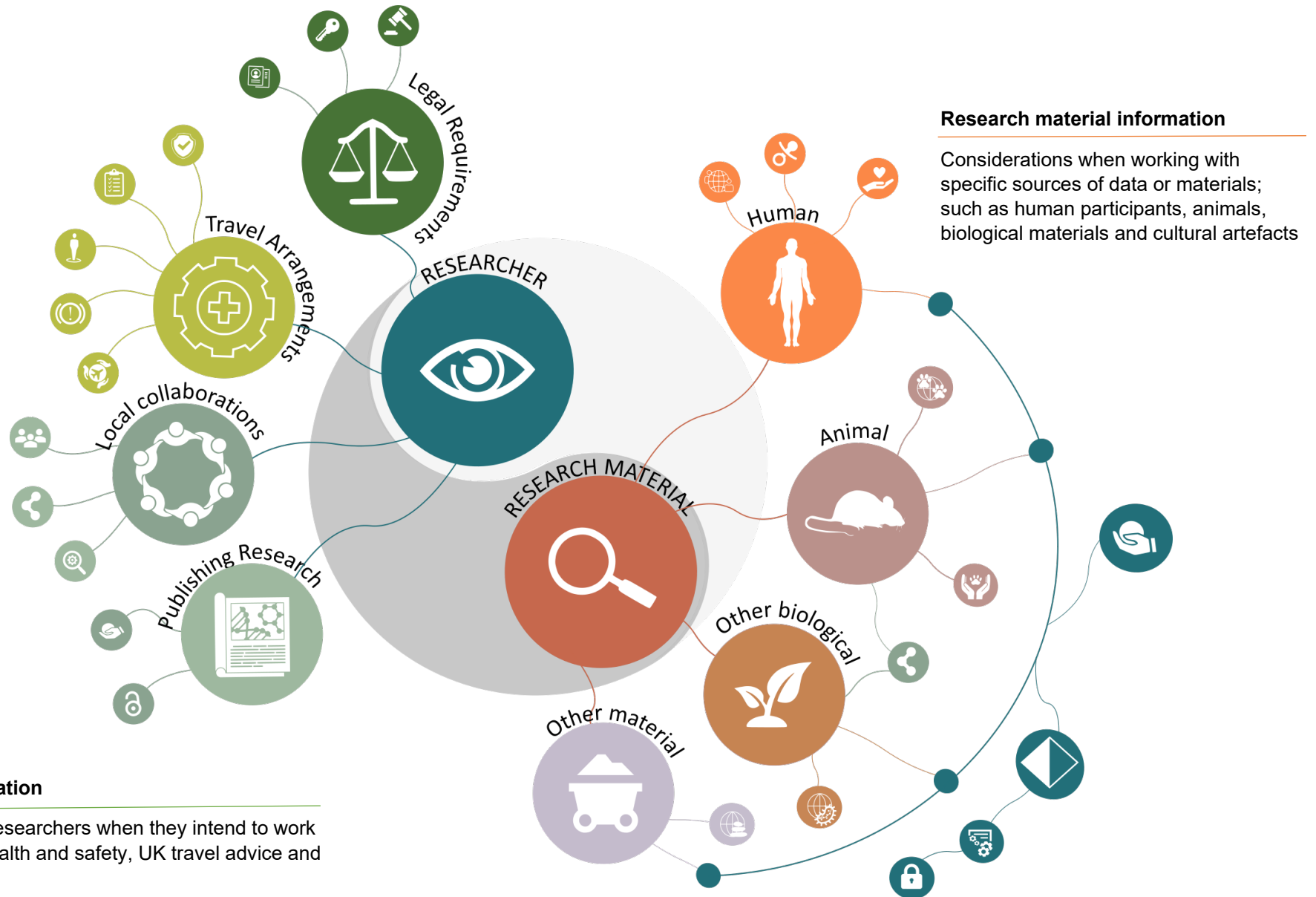


OVERSEAS RESEARCH ROADMAP

The roadmap sets out the processes involved in planning and conducting international research. The roadmap highlights the potential problems researchers might come across and where to find the relevant policies, requirements, and appropriate advice within UCL

<https://www.ucl.ac.uk/research/integrity/overseas-research-roadmap>



Researcher information

Considerations for researchers when they intend to work abroad, including health and safety, UK travel advice and insurance