

eRESEARCH DOMAIN



UCL

Data set minute madness

Whitehall II Study

Social determinants of health and interdisciplinary study of ageing

- 10,308 participants, aged 35-55, recruited from the London Civil Service offices in 1985
- 12 waves of data collection: self-completion questionnaires and clinical examinations
- Wide range of data on social inequalities, chronic disease, biomedical information, genetics

Data sharing

www.ucl.ac.uk/whitehallII/data-sharing

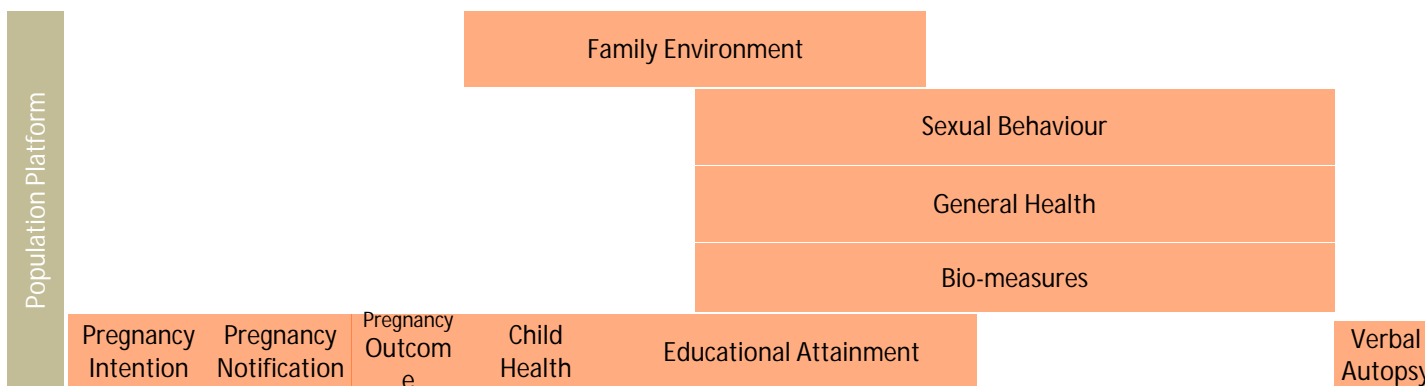
- Gated-access approach: application form and list of variables
- Medium-sized projects (1-2 papers), bona fide research
- Release of tailor-made datasets
- Enquiries: Aida Sanchez, a.sanchez@ucl.ac.uk



Data across the lifecourse in a rural South African community

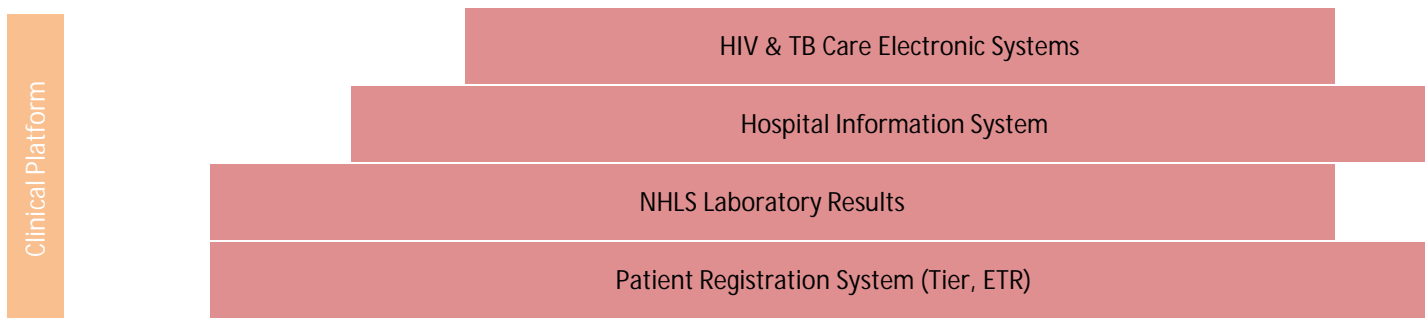
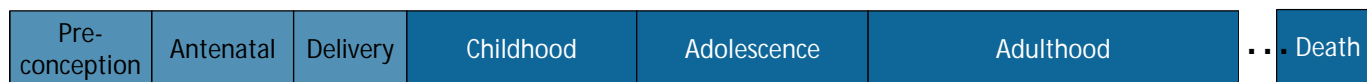


~85,000 Individuals from ~23,000 Households over 16 Years



Population Data Collection

Laboratory Data



Routine Health Information Systems

Clinical Data

Collaborations with AHRI-affiliated researchers strongly encouraged.
 Instructions for data access at: <http://www.africacentre.ac.za/index.php/data-rep>

British Sign Language Corpus

- Collection of ~125 hours of videos & metadata from 249 deaf BSL signers from 8 regions across UK (2008-2011) in conversation, telling stories, being interviewed and giving their signs for 102 concepts
- Some annotations/translations via ELAN multimedia annotation tool (<https://tla.mpi.nl/tools/tla-tools/elan>)
- Important resource for sign language researchers, teachers, students, interpreters. Also interest from language technology sector.
- Ethics & access
 - Informed consent for unanonymised, open access video
 - Dual access corpus: one interface for researchers, one for deaf community. Some data restricted to researchers only, upon application.



Welcome! Choose below from two different ways in which you can look at the video data from the BSL Corpus.

British Sign Language Corpus Project

CAVA
A Human Communication Audio-Visual Archive for BSL

CAVA home (British Sign Language Corpus Project)

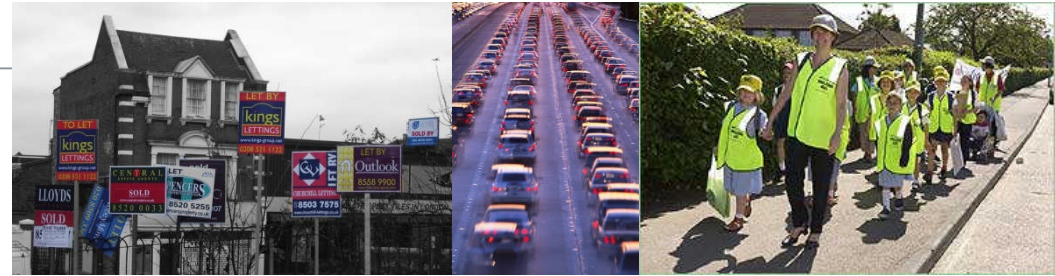
Background
The BSL Corpus is a large-scale project to create a comprehensive archive of British Sign Language (BSL) usage. It is a joint project of the British Sign Language Centre (BSL Centre) and the Centre for Language Acquisition (CLA) at the University of Edinburgh. The project is funded by the ESRC and the Wellcome Trust. The corpus is a valuable resource for researchers and students in the field of sign language and language acquisition. It provides a rich source of data for the study of BSL grammar, syntax, and semantics. The corpus is also a valuable resource for the deaf community, providing a platform for the study and teaching of BSL.

Click here to watch videos of deaf people around the UK telling stories or showing their signs for different things. Recommended for the casual visitor.

Click here to go to the CAVA website where you will be able to see ALL of the video data and download it. Access to conversation or interview data requires registration first. Recommended for research or teaching purposes.

<http://www.bslcorpusproject.org> ; Kearsy Cormier, Director

Census flow data



- Aggregate data about **movements** of people **between** (and within) places
 - Frequent events: daily commuting, journeys to school
 - Less frequent events: moving house
- An origin, a destination, and characteristics of the people moving between them
- Available from the 1981, 1991, 2001 and 2011 censuses
 - Data from 1981 to 2001 are all Open Data, free to all
 - Data from 2011 are a mixture of *open* data, *safeguarded* data and *secure* data

census.ukdataservice.ac.uk

UK Data Service
Census Support

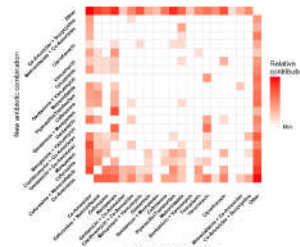
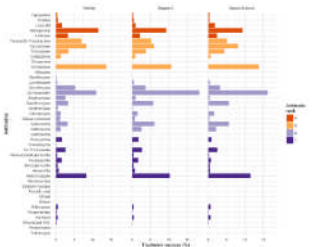
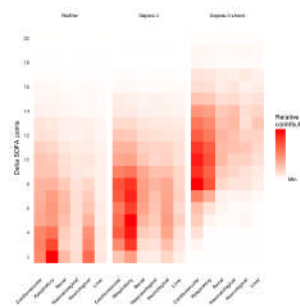
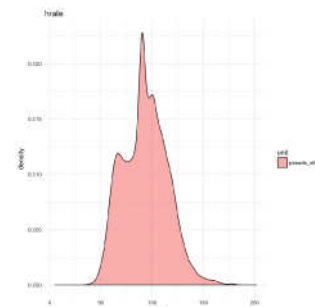
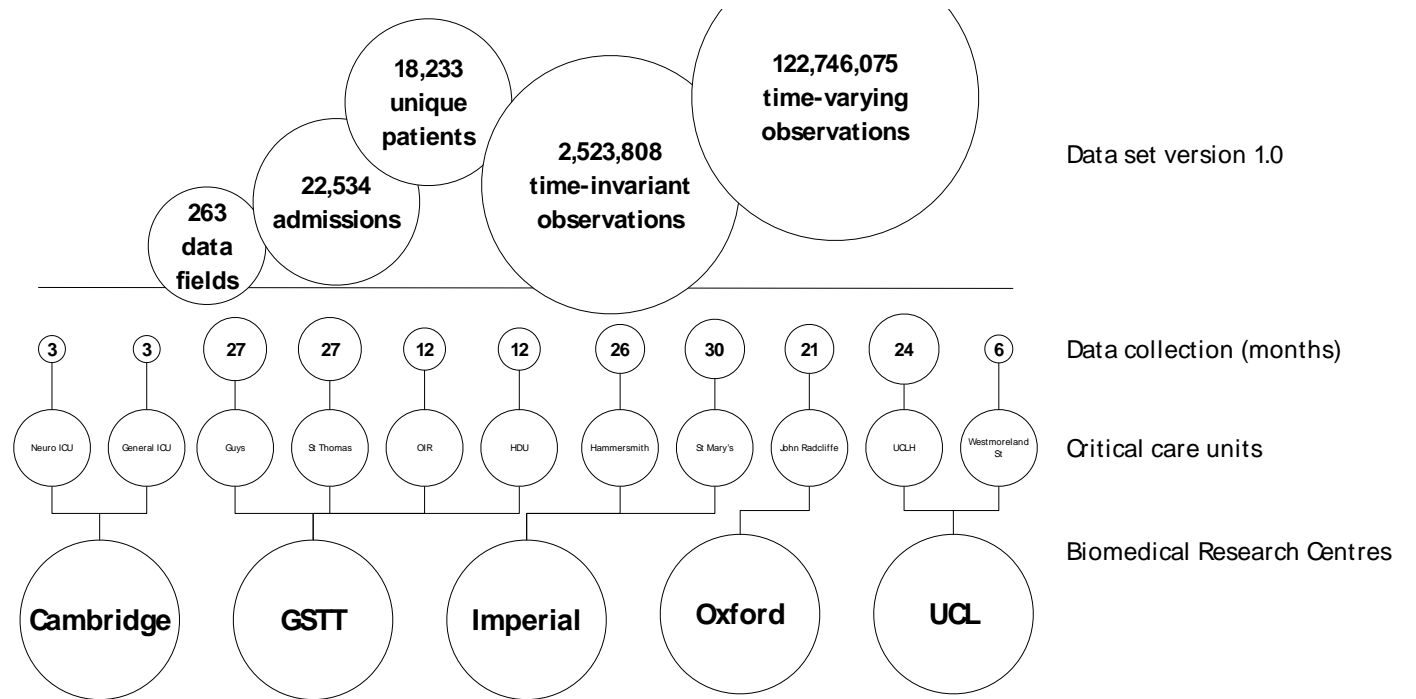


The Office for National Statistics Longitudinal Study (LS) *for studying*

- risk factors for **inter-generational social mobility** – or immobility
 - **health inequalities** at small-area level
- second- or third-generation **immigrants**
 - local **labour markets** – relationship to internal migration
- **jobless or poor** young people: what becomes of them?
 - **life expectancy** by occupation, area, number of children
- **timing of parenthood** and career progression



Critical Care Data Health Informatics Collaborative



Multicentre:
5 Biomedical Research Centres

Research ready:
Open source R package (cleanEHR)
provided for data manipulation

Linkable:
Patient identifiers retained
for linkage to other health and social care data

Rapid development:
Anonymised development data available



- The **Hidden Histories of computing in the Humanities** project is compiling an **oral history** of the field of **Digital Humanities** (PI Julianne Nyhan, Senior Lecturer, Department of Information Studies)
- Nyhan has collected **c.40 hours** of oral history recordings (and interviews are **ongoing**)
- The oral history recordings are available on the **project website**: <http://hiddenhistories.omeka.net> or **contact Nyhan directly** (j.nyhan@ucl.ac.uk)

