

# **ETHNO-ISS: An Ethnography of an Extra-terrestrial Society: the International Space Station**

**Prof. Victor Buchli**  
Principal Investigator

**<https://ethnoiss.space>**

This project has received funding from the European Research Council (ERC) under the European Union's Horizon 2020 research and innovation programme (grant agreement No. 833135)



European Research Council  
Established by the European Commission



## **ETHNO-ISS TEAM:**

**Jo Aiken**, Houston, NASA organizational infrastructure

**Victor Buchli**, San Francisco, design and manufacturing, 3-D printing

**Giles Bunch**, Cologne, ESA ISS Flight Control Training

**Jenny Gorbanenko**, Moscow, Orthodox Christianity and the ISS

**David Jeevendrampillai**, London, visual culture and sovereignty

**Adryon Kozel**, London, ISS Social Media

**Alica Okumura-Zimmerlin**, Tokyo, futures and the JAXA Kibo Module

**Aaron Parkhurst**, Cologne, ESA, the body and medical anthropology

**Makar Tereshin**, Baikonur, rocket launch discard and scavenger communities.



S123E010177

“...home as an organisation of space over time.’

(Mary Douglas 1991: 294)

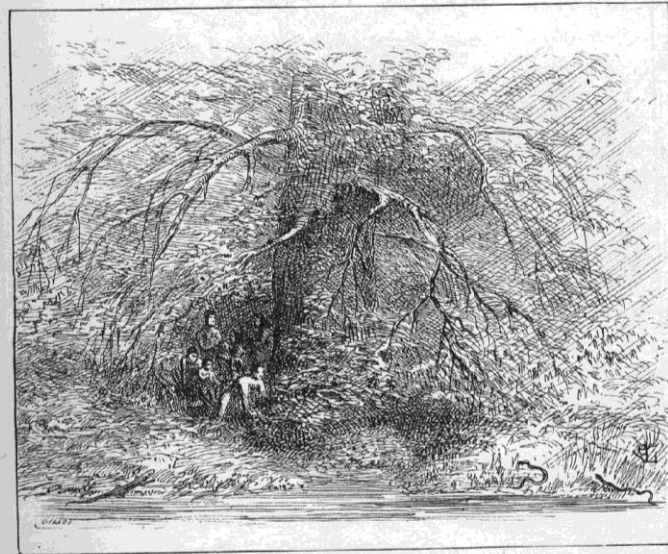
Regarding the functioning of the home,

‘...strongest indicator would not be the stoutness of the enclosing walls but the complexity of coordination.’

(Mary Douglas 1991:306)

clouds around the shelter, and are killed with sticks to serve as food for the family.

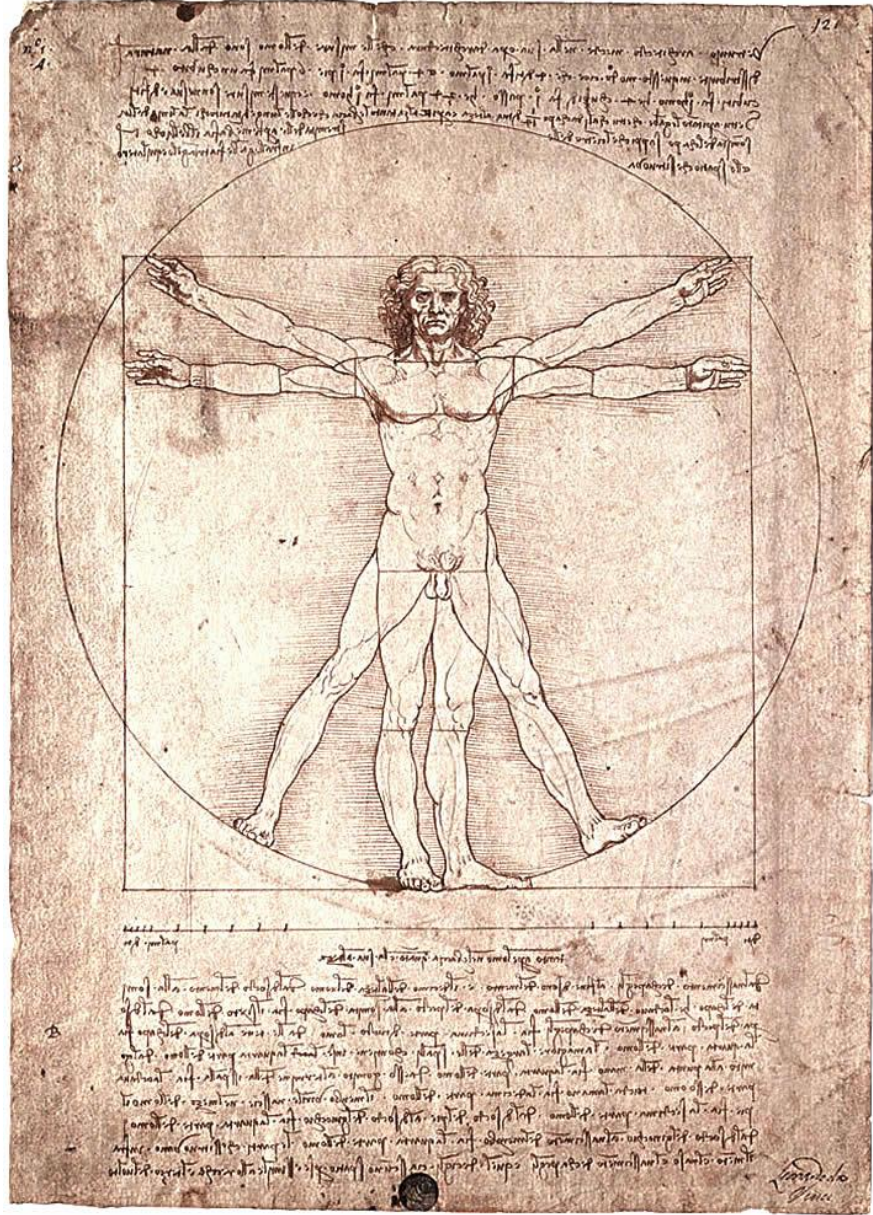
Not far off, Epergos, seized with compassion at sight of this misery, selects two young trees a few paces apart. Climbing one of these, he bends it down by the weight of his body, pulls towards him the top of the other with the help of a hooked stick, and thus joining the branches of



The First Shelter.—FIG. 1.

the two trees, ties them together with rushes. The creatures that have gathered round him look on wondering. But Epergos does not mean them to remain idle, and makes them understand that they must go and find other young trees in the neighbourhood. With their hands and with the help of sticks they uproot and drag them to

- ‘Because both body and house constitute the most intimate everyday environment and often serve as analogies for each other, it may sometimes seem unclear which is serving as metaphor for which- *the house for body or body for house.*’
- Carsten & Hugh-Jones, (1995:43)





THE ANATOMY OF ARCHITECTURE

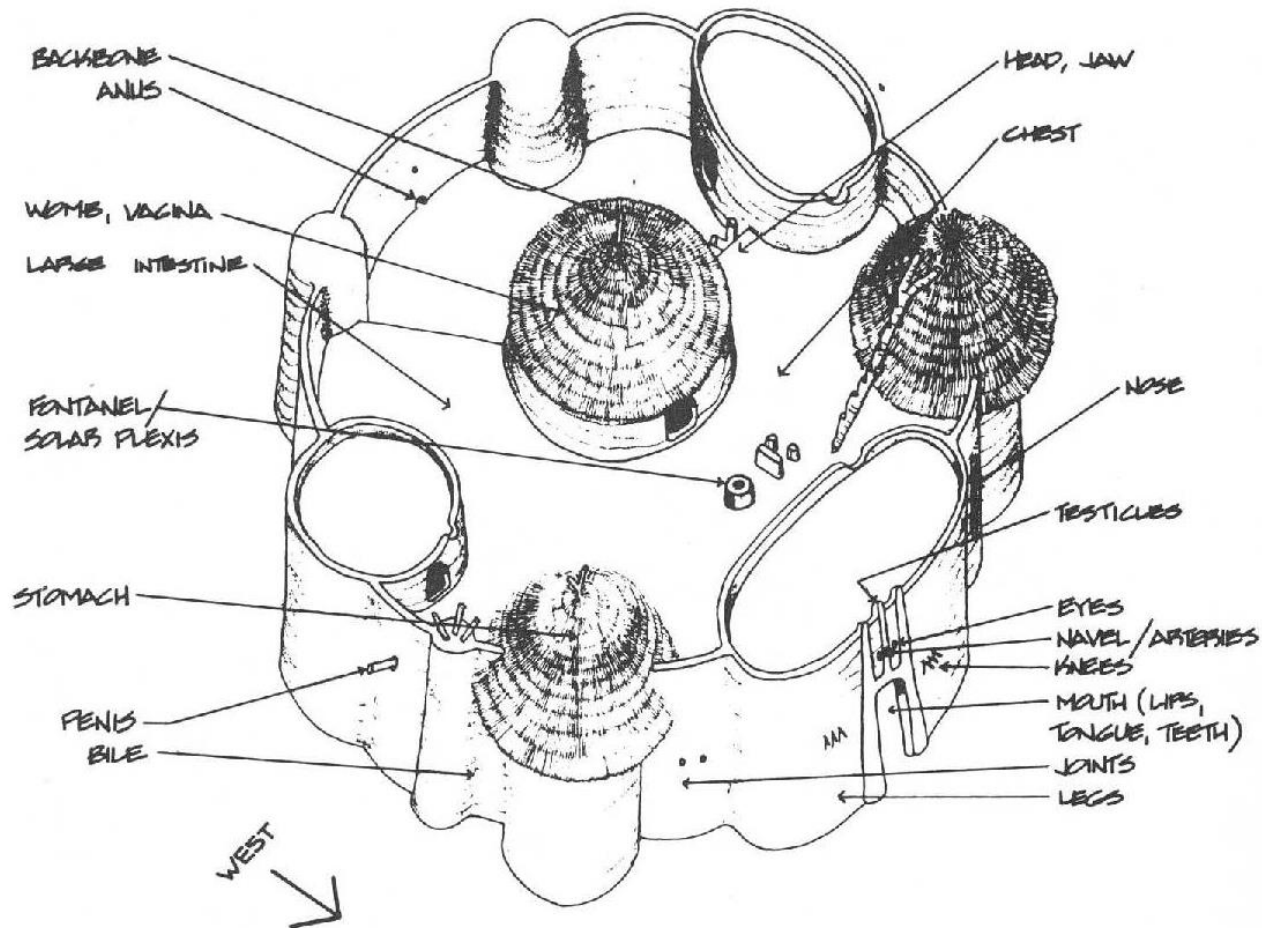


Figure 50. Diagram of the house with its human parts.

**'the living members of the community, gathered in the house, were so to speak, only 'furnishings'. They were mobile appurtenances of its solid enduring structure, into which they would eventually be absorbed as 'fixtures'**

**(Gell 1998: 253)**



FIG. 9.6/1. The Maori meeting house as a collective index of communal power. *Source:* Nga Tau-e-Waru, te Ore Ore Marae, Masterton. Auckland Public Library.

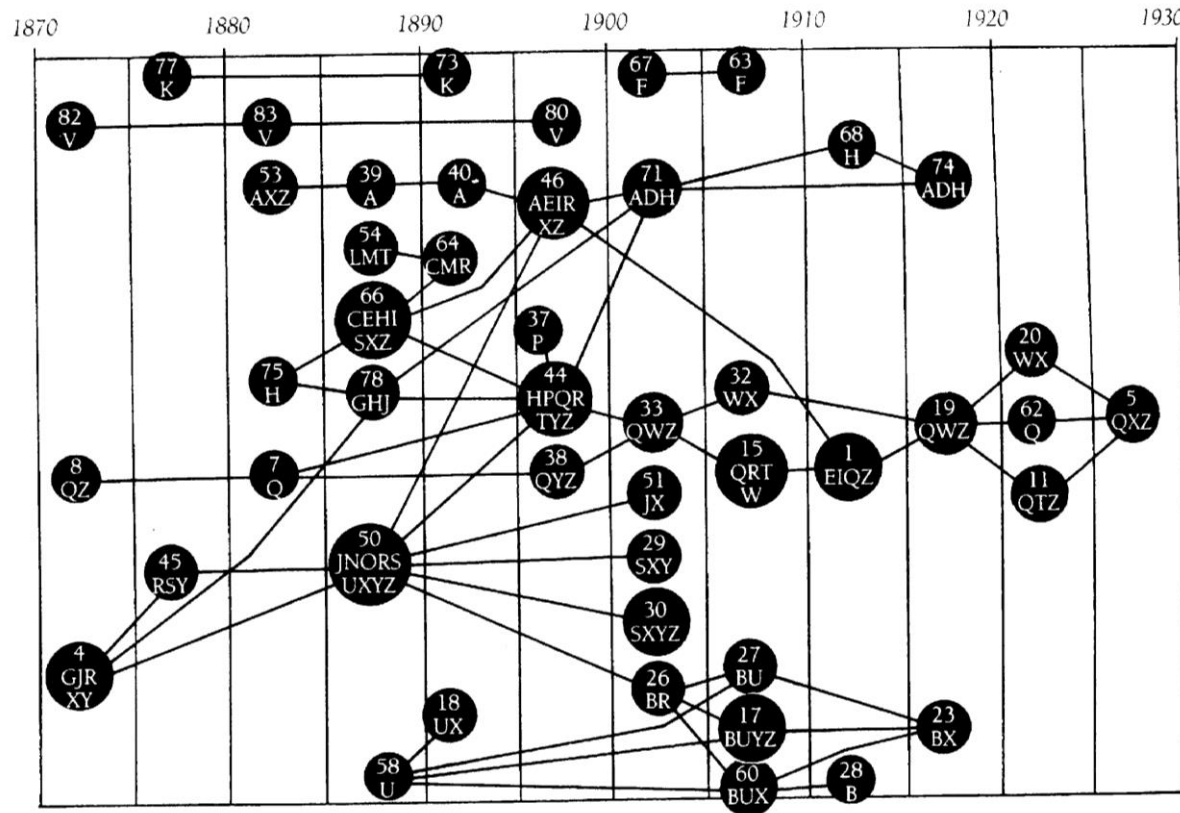


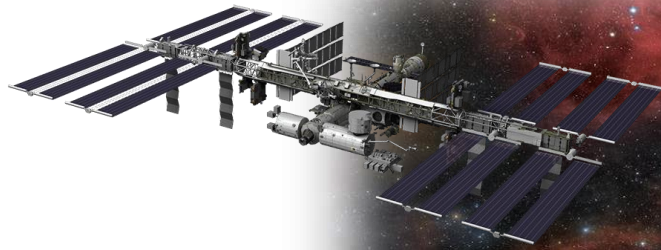
FIG. 9.6/3. The Maori meeting house as an object distributed in space and time. *Source:* Neich 1996: table titled 'The Transmission of Selected Figurative Painting Traditions'. Reproduced courtesy of Roger Neich and Auckland University Press.

Fred Scharmen (2017:185)

“An environment like the International Space Station is almost totally constructed to suit human needs. [...] Here, more than anywhere else, we have made an image of our own *umwelt*. Every parameter of the environment here is explicitly debated, designed and built.”

F. Scharmen (2017) “Highest and Best Use: Subjectivity and Climates off and After Earth”, *Journal of Architectural Education*, 71:2 184–196

The process of '**worlding**' is what unifies the **Project Themes**. It relates to Heidegger's neologism describing the dynamic, mutually constitutive and continuously unfolding processes whereby that which is intimate (on a bodily level) as well as that which is far-reaching (in terms of relationships with the cosmos) are dynamically and mutually configured in relation to one another in terms of empirically describable constantly expanding worlds (Heidegger 1993 and following Battaglia et al. 2012).



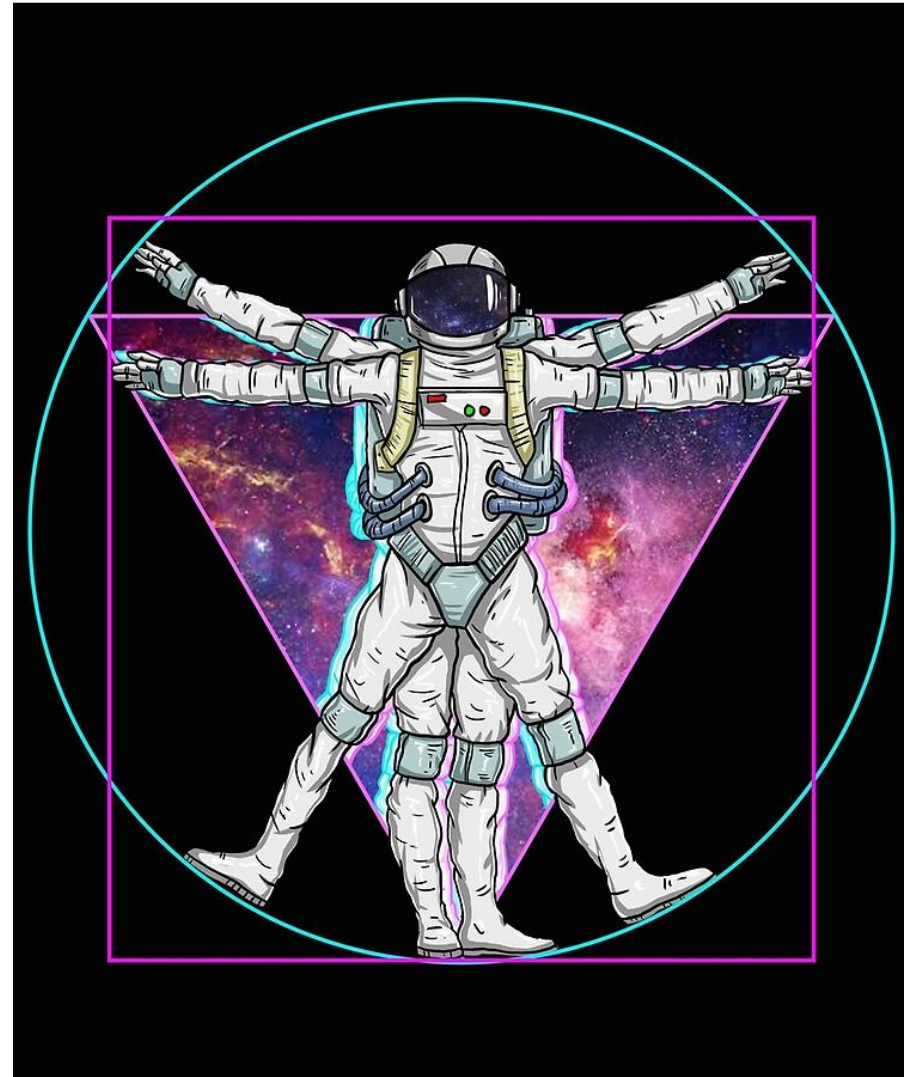
## Orion's Anatomy

The social anatomy of the human body  
at the edge of the Earth

Dr Aaron Parkhurst  
EthnoISS  
University College London

## Three approaches to the Body in Space

- An anthropology of the Body
- Biosocial Anthropology
- Material Culture Studies



Giles Bunch  
giles.bunch.20@ucl.ac.uk



Columbus Control Centre, credit: esa.int



## Analysis of ESA Flight Control Team training

Participant-observation of  
Flight Control Team training  
Sept-Dec 2021 – European  
Astronaut Centre, Cologne  
2022 – Columbus Control  
Centre, Oberpfaffenhofen

### Study draws on:

- Anthropology of Time
- Anthropology of Cognition
- Ideas developed through previous work on *Behavioural Training for Astronauts for Earthlings*
- Interest in Industrial Relations and use of Workers' Inquiry techniques.

SPACE ENTHUSIASM AND SOCIAL MEDIA IN THE NEW SPACE AGE

# A DIGITAL AD ASTRA

Adryon Kozel

# Seeing Earth – Making Worlds

Dr David  
Jeevendrampillai



# The Overview Institute

*"That's one small step for [a] man, one giant leap for mankind." --Neil Armstrong*

[HOME](#)[FEATURED](#)[BLOG](#)[BOOKS](#)[LINKS](#)[ABOUT US](#)[LOGIN](#)[BECOME A MEMBER](#)

## DECLARATION OF VISION AND PRINCIPLES

### A Critical Time

We live at a critical moment in human history. The challenges of climate change, food, water and energy shortages as well as the increasing disparity between the developed and developing nations are testing our will to unite, while differences in religions, cultures, and politics continue to keep us apart. The creation of a "global village" through satellite TV and the Internet is still struggling to connect the world into one community. At this critical moment, our greatest need is for a global vision of planetary unity and purpose for humanity as a whole.

### The Overview Effect

For more than four decades, astronauts from many cultures and backgrounds have been telling us that, from the perspective of Earth orbit and the Moon, they have gained such a vision. There is even a common term for this experience: "The Overview Effect", a phrase coined in the book of the same name by space philosopher and writer Frank White. It refers to the experience of seeing firsthand the reality of the Earth in space, which is immediately understood to be a tiny, fragile ball of life, hanging in the void, shielded and nourished by a paper-thin atmosphere. From space, the astronauts tell us, national boundaries vanish, the conflicts that divide us become less important and the need to create a planetary society with the united will to protect this "pale blue dot" becomes both obvious and imperative. Even more so, many of them tell us that from the Overview perspective, all of this seems imminently achievable, if only more people could have the experience!

**Earthrise Apollo 8, December 29, 1968 (original orientation)**







Jeevendrampillai, D. and A. Parkhurst (2020),

‘Towards an Anthropology of Gravity: Emotion and Embodiment in Microgravity Environments’ in *Emotion, Space and Society*, vol 35



Past 45' it is hard to register human emotion and communicate effectively

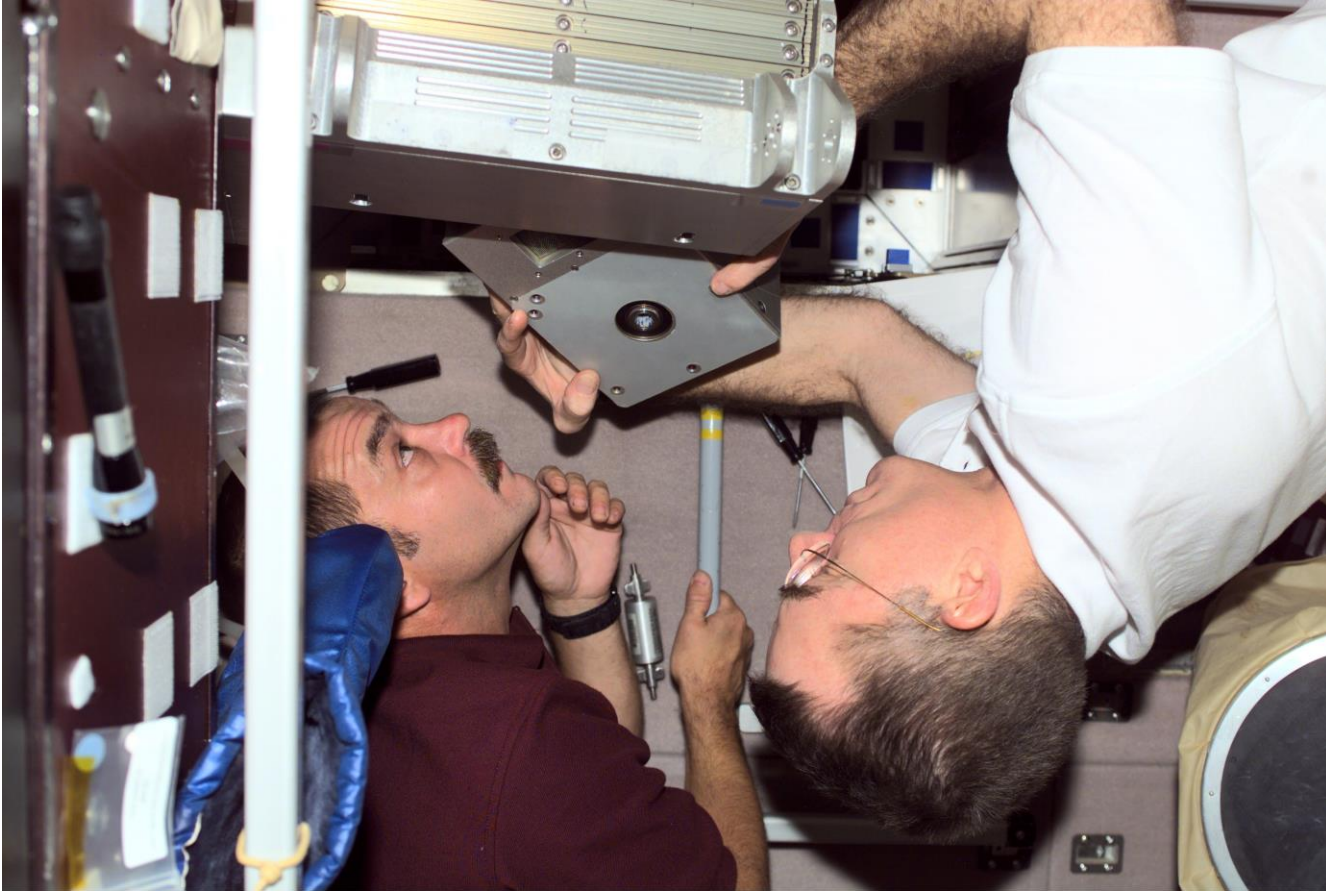
Personal communication:

Dr Iya Whiteley

Director, Centre for Space Medicine

Mullard Space Science Laboratory, UCL

[www.ucl.ac.uk/mssl/research/ucl-centres/centre-space-medicine](http://www.ucl.ac.uk/mssl/research/ucl-centres/centre-space-medicine)



ISS003E5192 2001/08/19 20:48:56





**UCL**



*Krestnyy khod in the  
second sky:*

*Russian Orthodoxy in  
the nexus of the ISS*



*Krestnyy khod*  
in the second sky

# Patriarch Kirill of Moscow and All Russia celebrates Easter with the Cosmonauts of the ISS, May 2, 2017









**MADE IN SPACE,**  
Moffett Field, Nasa Ames, California

World's longest 3-D print, Guinness World Record, 37.7 metres



# Made In Space Mission Statement:

Made In Space is focused on developing the technologies necessary for humanity to become a multi-planetary civilization. The projects below highlight both our existing products and some of our on-going research efforts towards that ultimate goal.



THANK YOU!

**UCL COLLABORATORS:**

UCL SPACE DOMAIN

ESA\_Lab@UCL

CENTRE FOR OUTER SPACE STUDIES, INSTITUTE OF ADVANCED  
STUDIES, UCL

OFF-WORLD LIVING INSTITUTE, BARTLETT SCHOOL OF ARCHITECTURE