



Ecological outcomes of Wildlife Management Areas (WMAs) in Tanzania

Maurus Msuha, TAWIRI

Ecological outcomes of WMAs in Tanzania

Aidan Keane (Imperial), Maurus Msuha (TAWIRI), Joseph Olila (TNRF), Jens Friis Lund (Copenhagen), Neil Burgess (WCMC)



Jumuiko la Maliasili Tanzania

Tanzania Natural Resource Forum



Imperial College
London



UNEP



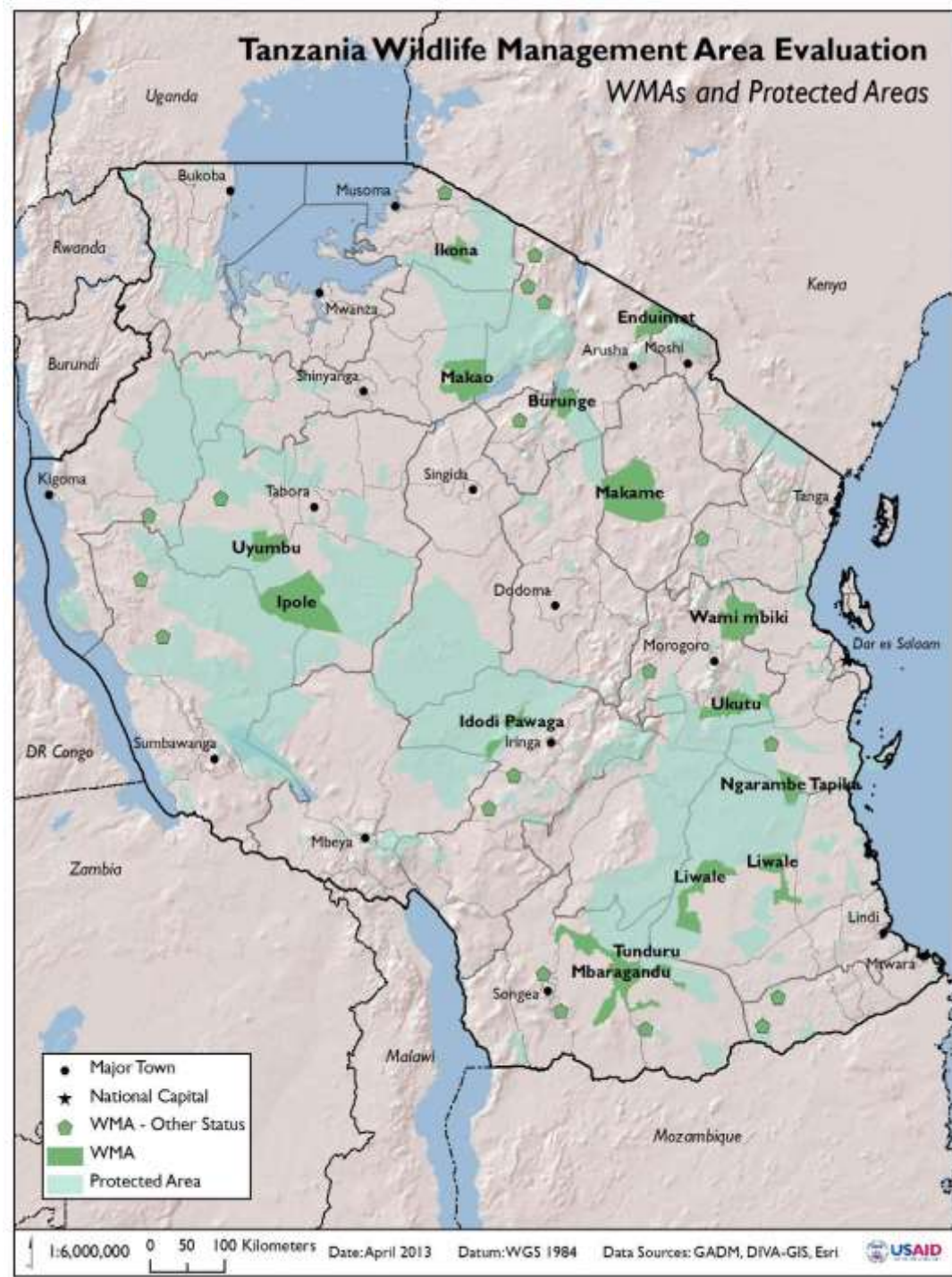
WCMC

What are the ecological outcomes of WMAs?



Why WMAs?

**Improve wildlife conservation
through benefit sharing with
communities**



Map from WWF-USAID
WMA status report 2013

Ecological outcomes of WMAs

- Methods:
 - Remote sensing (1975-2014)
 - Ground truthing 2014
 - Aerial census data before and after establishment of WMAs
 - BACI analyses
- Variables:
 - Vegetation cover/ habitat type
 - % land converted to cultivation / settlement
 - Wildlife counts – population trends
 - Livestock counts – trends over time

Preliminary shortlist of WMAs and available data

WMA	Aerial counts before gazettement	Gazetted	Aerial Counts available
Enduimet	2003, 1990; 1994;2004;2006	2007	2007, 2013
Makame	no	2009	2011
Burunge	2006, 2002-2004	2006	2009, 2011
Tunduru	no	2003	2006; 2009; 2011, 2013
Mbarang'andu	2006	2006	2006; 2009; 2011, 2013
Ngarambe-Tapika	no	2003	2006; 2009; 2011, 2013
Liwale	no	2003	2006; 2009; 2011, 2013

Aerial wildlife census in 2014 & data collection on livestock numbers



