



# UCL



## Poverty and Ecosystem services Impacts of Wildlife Management Areas: PIMA

Katherine Homewood  
Anthropology, UCL

# Poverty and Ecosystem Services Impacts of Wildlife Management Areas (PIMA)

Aidan Keane (Imperial), Maurus Msuha (TAWIRI), Joseph Olila (TNR), Jens Friis Lund (Copenhagen), Neil Burgess (UNEP-WCMC)



Jumuiko la Maliasili Tanzania  
Tanzania Natural Resource Forum



Imperial College  
London

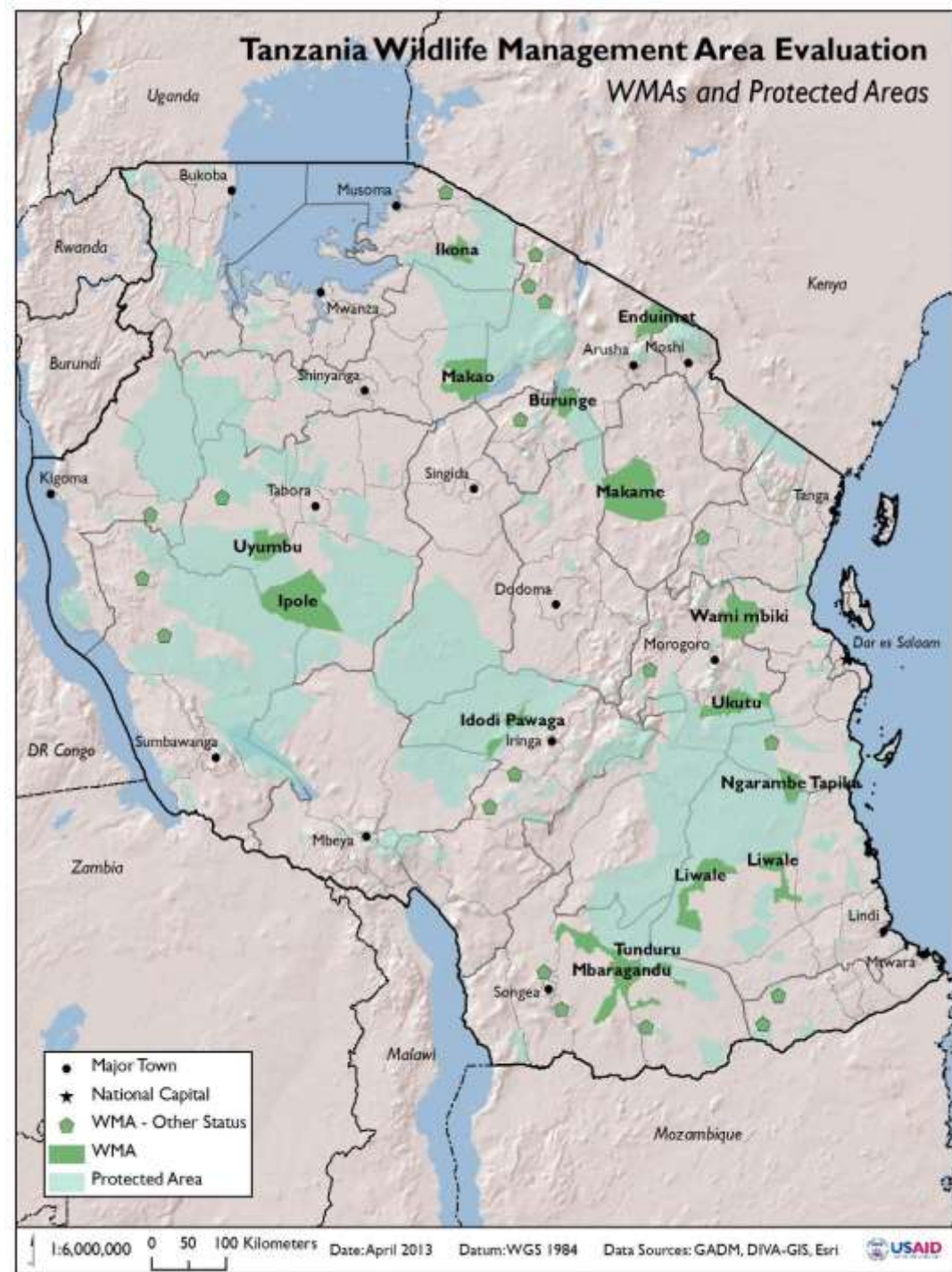


# Tanzania's Wildlife Management Areas: WMAs

PIMA's research question:

What are the social and ecological outcomes of WMAs?

From WWF-USAID draft WMA status report 2013



# Builds on

- Past research
  - pastoralist rangeland
  - miombo woodland
- Outcome evaluations:
  - Overviews: WWF/USAID WMA status report 2014
  - Case studies: Sulle,..
  - Ecological: Dancer...
  - Political ecology: Blaikie, Dressler...
  - Institutional: Nelson; Lund ;
  - Socio-economic: Noe and Kangalawe; Homewood...
- Evolving practice/ Policy moment
  - TZ researchers: UDSM; SUA ...
  - Conservation NGOs: AWF, WWF-TZ.....
  - CSOs: TNRF, ....
  - TZ Vision 2020
  - Shifting donor and policymaker context

# PIMA's research question:

## 1. What are the ecological outcomes of WMAs?

- Methods:
  - Remote sensing (1975-2014)
  - Aerial census (before or at inception, to 2014)
- Variables:
  - Vegetation cover/ habitat type
  - % land converted to cultivation / settlement
  - Counts (wildlife, livestock)

# PIMA's research question:

## 2. What are the social outcomes of WMAs?

- Mixed methods
  - WMA-, Village- and household-level
    - Group / key informant interview
    - Standardised household questionnaires
- Variables
  - WMA- and Village-level:
    - institutional/ governance change
  - Household level:
    - Livelihoods / Resource use histories
    - Individual wellbeing change



# Northern WMAs:

- arid and semi arid
- savanna rangeland
- migratory wildlife
- pastoral grazing
- large scale cultivation
- tourism



# Southern WMAs:

- Woodland/  
dry forest
- Timber
- Non Timber Forest  
Products
- Tourist hunting/  
viewing





# Preliminary shortlist of WMAs

Ecosystem type	WMA	N° villages in/around WMA	'Before' data	Gazetted	Aerial counts
Savanna	Enduimet	9	Yes	2007	1990; 1994; 2004; 2006; 2007; 2011; 2014
	Makame	4	Yes	2009	1990; 1994; 2004; 2006; 2007; 2011; 2014
	Burunge	10	Yes	2006	1990; 1994; 2002-2004; 2006; 2009; 2011; 2014
Miombo	Tundururu	9	?	2003	2006; 2009; 2011; 2013; 2014
	Mbarang'andu	7	Yes, seeking access	2006	2006; 2009; 2011; 2013; 2014
	Liwale	9	?	2003	2006; 2009; 2011; 2013; 2014
	Ngarambe-Tapika	2	?	2003	2006; 2009; 2011; 2013; 2014

# Hoped-for outcomes

- Understanding of
  - Qualitative processes
  - Main social and ecological changes
  - Quantitative/ statistical causal attribution
- Evaluating ecological effects in stochastic, dryland environments
  - EA savanna pastoral /wildlife social-ecological systems
  - dry woodland SES
- Research into practice
  - What works, where, for whom, why
  - Policy briefings/media outputs
- Extend and leverage networks
  - Balanced collaborations
    - S-S, N-S, N-N
    - Government, researchers, users, practitioners
- Contribute to evidence-based, ecologically and socially sustainable land use in Tanzania and across global south



# Poverty and Ecosystem Services Impacts of Wildlife Management Areas (PIMA)

Aidan Keane (Imperial), Maurus Msuha (TAWIRI), Joseph Olila (TNR), Jens Friis Lund (Copenhagen), Neil Burgess (UNEP-WCMC)



Jumuiko la Maliasili Tanzania  
Tanzania Natural Resource Forum



Imperial College  
London



UNEP WCMC

