

Early Careers Research Committee

Launch event and Q and A seminar

Tuesday 20th December – 4pm

Purpose of the committee

- To discuss follow-up action resulting from previous Early Career Researchers Group Meetings, in particular any matter that was referred to DET.
- To offer support to postdoctoral researchers to improve their chances of career progression.
- To formalize, organize and encourage participation of postdoctoral scientists in teaching and associated teaching training.
- To develop a policy for gaining teaching experience.
- To provide feedback and suggestions regarding support for next stage career moves.
- To organize an annual Postdoctoral Research Day.
- To act as a voice for early career researchers reporting to DET.
- To promote best practice for career development.
- To report to and make recommendations to DET and/or related committees on any other relevant matters.

Teaching

Post Doctoral Research Day

Friday 14th July 2017

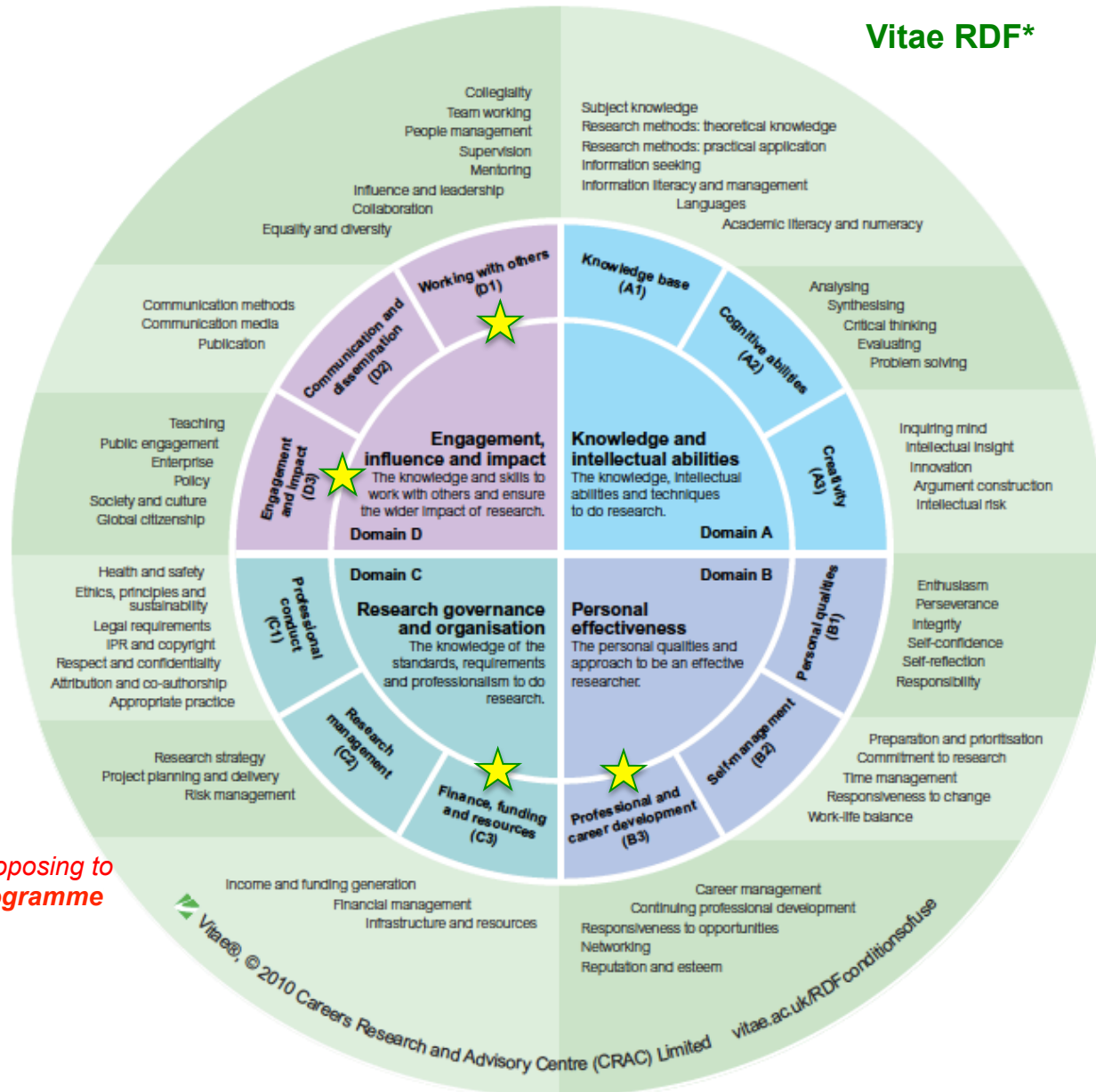
Square Lounge and JHLT
9am-5pm (ish)

A celebration of our post-docs and what research we have conducted, in addition to providing helpful career advice/inspiration

Format of the day

- Morning
 - Presentations given by post doctoral researchers
 - (selected based on abstract submission)
- Lunch/Poster session/photo viewing session
 - Opinion on whether you would prefer to submit posters or scientific photo's which you have taken relatively recently
- Early afternoon
 - Second round of presentations
 - Photo prizes will be announced
- Coffee
 - Networking, viewing photos, viewing exhibitors stands
- Late afternoon
 - Speakers from different career backgrounds give information based on their career, how they got there, would they recommend it etc.
- Early evening
 - Wine reception and networking

Researcher Development



Engagement, Influence and Impact

Engagement and impact:

- Teaching
- Public engagement

Working with others:

- Mentoring

*The UCL Public Engagement Unit
Education partnerships*

Personal Effectiveness

Professional and Career Development

- CPD
- Networking

UCL's HR Organisational Development (OD): proposing to establish a Researcher Staff Development Programme (RSDP)

Finance, funding and resources

Research coordination office

Postdoc Networking at SoP

We want to encourage inter-departmental postdoc networking and collaboration

- Introduce a monthly networking event at the morning coffee, i.e. last Friday of the month
- Organize our own coffee and cake event once a month
 - Requires funding
- Monthly post-work networking in the JCR; last Friday of the month
- Annual Post Doctoral Research Day
- Advice/idea exchange for early career researcher teaching – Moodle Forum

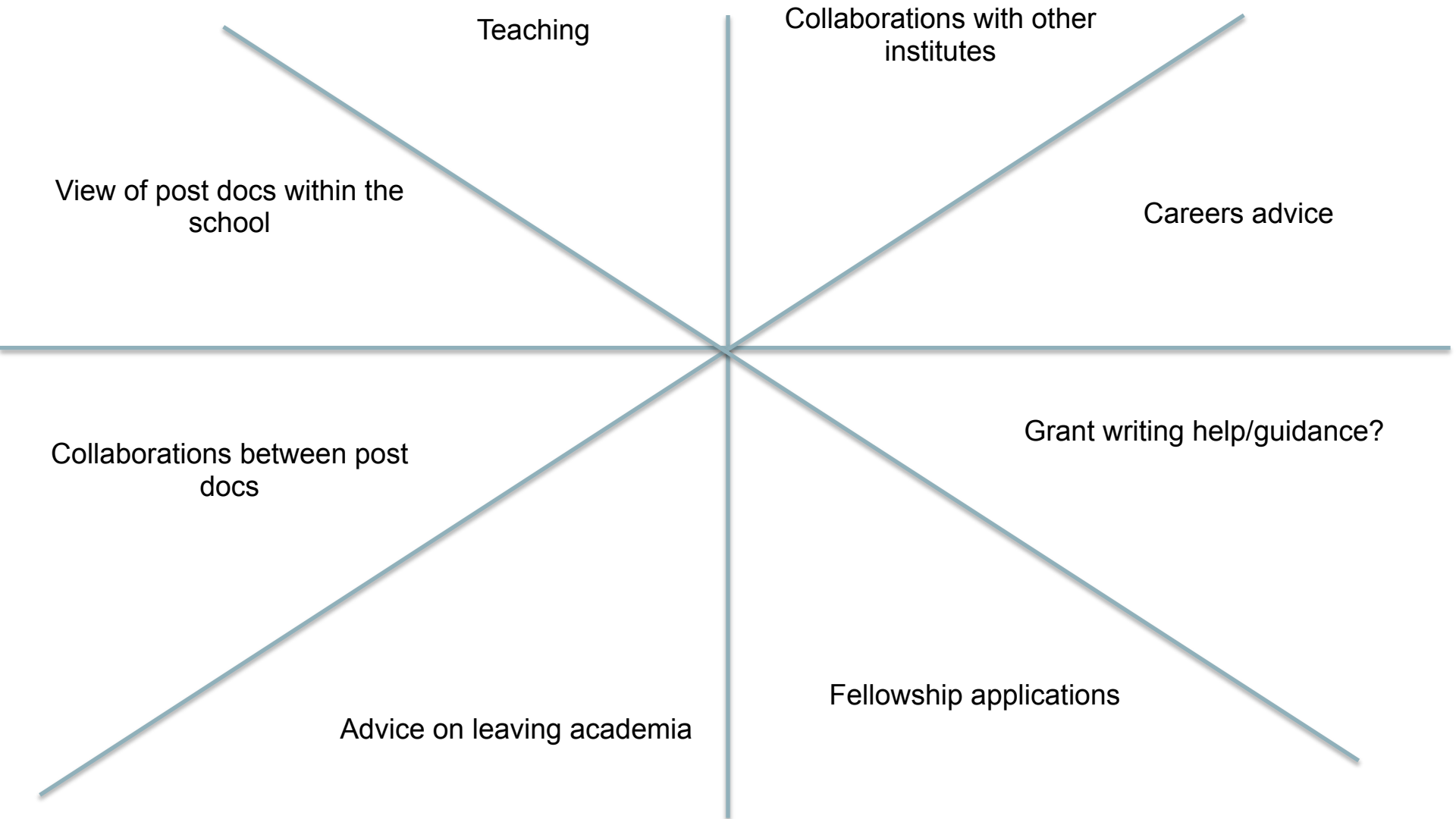
Moodle Page: SOP-PRA

All enrolled onto this

Can be used to email all post docs, start discussion boards, voice ideas/concerns etc

Suggestions from you

What do you want the ECR committee to achieve? And how can we help?



?