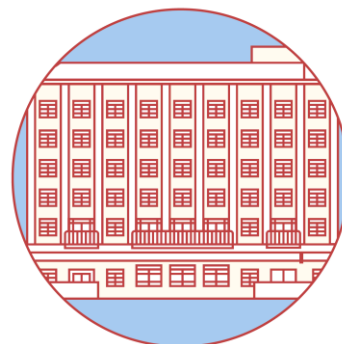


Getting Started

Self guided tour

Science Library



Used in conjunction with Science Library Floor Plan in the Science Library Guide, this self-guided tour will:

- introduce you to key locations and facilities in the Science Library;
- help you find subject collections relevant to you;
- help you find details of your Subject Liaison Librarian.

Please note, most areas in the Science Library are quiet study spaces. Please respect other library users as you complete your tour.

Start at the entrance gates.

- 1 With your back to the entrance gates, walk up the stairs to your right, or take the lift to the first floor. From the top of the stairs, turn right and go through the door next to the lifts. You will immediately pass the female and male **toilets** (there are **more toilets** on the third and fourth floors).
- 2 Walk past the toilets and on your left you will pass a **small postgraduate computer cluster**. Go straight on and then turn right up the stairs to the second floor.
- 3 Turn right at the top of the stairs, through the door and on your right you will find the **water fountains**. Turn around, back through the door and up the stairs immediately to your left, to the third floor. If you are a postgraduate, you may also like to go to the fourth floor at this point and locate the **Research Grid**.
- 4 Turn right at the top of the stairs and along the corridor into the Physics and Chemistry reading room. Here you will find a **large computer cluster**. Turn left and walk towards the back of the room, turning left through the door in this area next to the Maths and Physical Science Periodicals, leading to some stairs.
- 5 Go all the way back down these stairs to the ground floor (or follow the signs for the lifts) and through the door marked **Helpdesks** and **Clusters**. Immediately to your right, you will see some glass **Group Study Pods** that can be booked for group study (there are also two other bookable study rooms on the third floor). In front of you, you will see a **Laptop Loan** cabinet and four **Single Study Pods**. Next to these is the **Science Library Café**, which also houses the **Short Loan Collection**.

6

To your left you will find the help point with lots of friendly staff to assist you with IT queries and book borrowing, as well as librarians who can help with your study and research queries. Beyond these is the **book issue and returns** area.

7

Opposite the help point are a number of printing/scanning/copying devices. Go past these towards a large computer cluster. There is another laptop loan cabinet beneath the stairs to the right of the computers, and in the opposite corner is the DMS Watson Training Cluster. Walking back towards the entrance gates, on your left you will find the self-service terminals for borrowing and returning books.

Where are the books that I want to read? And who is my Subject Liaison Librarian?

- When you search Explore to locate an item on our shelves you will find a location similar to the following:

Science LIBRARIANSHIP L 20 MAI				
Hide Details				
1 - 1 of 1 Records				
BARCODE	TYPE	LOAN PERIOD	DESCRIPTION	STATUS
30217010544686	Book	8 Week Loan		Item on shelf (0 requests)

- The catalogue entry tells you the library in which the book is **located**, (in this example, **Science**), the **collection**, (in this example, **Librarianship**), the **shelfmark**, (in this example, **L 20 MAI**) and the **loan period** (in this example, **8 Week Loan**). Where multiple copies are available, sign in to see the loan periods. If the book is currently on loan, you will be able to place a hold request on the book.

- Make sure you understand how to find an item in the library. Use the **Science Library Floor Plan** to find the collection most relevant to you from the following:

- | | | |
|--------------------|----------------------|-----------------------|
| • Anthropology | • Engineering | • Maths |
| • Archives | • Geography | • Medical Sciences |
| • Biology | • Geology | • Physics & Astronomy |
| • Botany | • History of Science | • Psychology |
| • Chemistry | • Librarianship | • Statistical Science |
| • Computer Science | • Management | • Zoology |

- Take a look at the labels on the spines of the books to understand how the books are ordered by shelfmark. In each collection you will find a poster with details of your **Subject Liaison Librarian**, who you can contact for help and support at any time.

- Make a note of the name of your Subject Liaison Librarian and their contact details here:

If you are unsure which collection(s) is most relevant to you, search **Explore** www.ucl.ac.uk/library/explore for a topic of your choice and see which collection includes that item.

Getting started www.ucl.ac.uk/library/getting-started