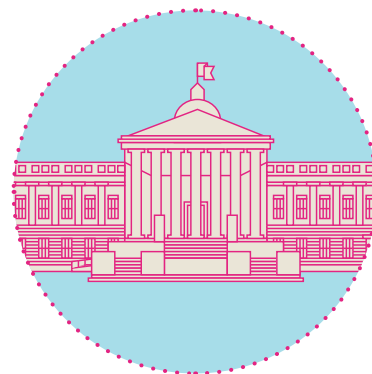




Getting Started self-guided tour Main Library



Used in conjunction with the Main Library Floor Plan in the UCL Main Library Guide, this self-guided tour will:

- introduce you to key locations and facilities in the Main Library
- help you find subject collections relevant to you
- help you find details of your Subject Liaison Librarian

Please note, the Main Library is a quiet study space. Please respect other library users as you complete your tour.

Start in the Flaxman Gallery, in the centre of the building on floor 1, beside the statue of St Michael.

- 1 Head into the South Wing and on your left you find the **Returns area** where you can return books and browse books that have recently been returned and are awaiting shelving. Here there is also an **enquiry desk** where library staff can help with your queries.

Move into the next room along the corridor to find the **help point** with friendly staff here to assist you. Look out for the **self-issue machines**, which you must use to borrow books. If you have **reserved a book** that was out on loan to someone else, you can collect it from this room. At one end of the room you will see the **Short Loan Collection**, which contains books that are heavily in demand and which you can book for a specific time slot. You'll also notice **print/scan/copy** machines are available in this room.
- 3 Exit this room and go to the room straight opposite you. Here you'll find **PCs** and self-service **lockers for borrowing a laptop**. There is also a print/scan/copy machine and a self-issue machine. Around the edge of the room you'll find printed **reference books** such as dictionaries, directories and encyclopaedia.
- 4 Studying can be thirsty work! Head back towards the Flaxman Gallery and take the stairs on the left just before you get there. These take you up to floor 2. Take a right and go all the way to the end of the History corridor. Turn left and you'll find water fountains. Opposite the **water fountains** is another **PC area**.
- 5 Head back down the history corridor, but instead of turning left to go down the stairs, turn right and follow the corridor around the outside of the dome. You will pass female and male **toilets**, and pass over a bridge with a view down to the Flaxman Gallery and Donaldson Reading Room below.

- 6 Once you've passed the toilets, turn right into the Hebrew and Jewish corridor. On your left is the **largest computer cluster** room in the Main Library. If you are a research student, you could explore the rooms that make up the **Research Grid** on your right.
- 7 Continue to the end of the corridor into the open space beyond, and go down the stairs on your left. In the area at the bottom there are **more self-service lockers for borrowing a laptop**.

Where are the books that I want to read? And who is my Subject Liaison Librarian?

- When you search Explore to locate an item on our shelves you will find a location similar to the following:

Main Main Library Collection ENGLISH XC 7 SWI
[Hide Details](#)

1 - 1 of 1 Records

BARCODE	TYPE	LOAN PERIOD	DESCRIPTION	STATUS
2811029352	Book	8 Week Loan		Item on shelf (0 requests)

- The catalogue entry tells you the library in which the book is **located (Main)**, the **collection (ENGLISH)**, the **shelfmark (XC 7 SWI)** and the **loan period (8 Week Loan)**. Where multiple copies are available, sign in to see the loan periods. If the book is currently on loan, you will be to place a hold request on the book.
- Make sure you understand how to find an item in the library by selecting an example shelfmark to locate from those listed here. Use the Main Library Floor Plan to find the correct collection and then locate that item on the shelves. At that location you will find a poster with details of your Subject Liaison Librarian, who you can contact for help and support at any time.

ANCIENT HISTORY	B 5 KUH	HUMAN RIGHTS	HD 819 HAR
ART	MG 19 ROT	ICELANDIC	E 150 CRA
CLASSICS	LV 35 THO	INTERNATIONAL RELATIONS (SEE PUBLIC POLICY)	
COMPARATIVE LITERATURE	LITERATURE A 77 CHA	INSTITUTE OF THE AMERICAS	LATIN AMER. HIST. A 120
CRIME SCIENCE	LAW H 7 GRE	ITALIAN	L 130
DANISH	S 42 SHA	LAW	W 100 CRA
DUTCH	H 32.276 BRO	LITERATURE	A 77 CHA
ECONOMICS	N 295 HEN	NORWEGIAN	N 320
ENGLISH	P 222	PHILOSOPHY	GB 170
FILM STUDIES	ART QN EIS	PORTUGUESE	XD 100 AMA
FRENCH	H 50 TET	PUBLIC POLICY	RC 952 BLA
GERMAN	P 221	SCANDINAVIAN	C 42 NES
HEBREW	B10	SPANISH	M 225
HISTORY	83 A CHA	SWEDISH	R 227
AMERICAN HISTORY	F 500 FLO	TRANSLATION	P306.2 DIA
LATIN AMERICAN HISTORY	C 160 VIL		
LONDON HISTORY	D 8 TRO		

- Make a note of the name of **your Subject Liaison Librarian** and their contact details here:

.....

If you are unsure which collection(s) is most relevant to you, search **Explore: www.ucl.ac.uk/library/explore** for a topic of your choice and see which collection includes those item