



# JDiBrief - Analysis

## Vulnerable Localities Index: CASE STUDY(4 of 5)

Author: Lisa Tompson, UCL Jill Dando Institute

**APPLICATION:** The VLI has been applied in many places in the UK as part of analysis supporting community safety objectives. Here we provide one example of where the Safer Middlesbrough Partnership used the method to identify priority neighbourhoods for its partnership Strategic Assessment report.

The VLI was calculated for each output area (OA) in the district and thematically mapped in a Geographical Information System. The results can be seen in Figure 1.

The VLI method performed the job of ‘scanning’ in a problem-solving process. From the map shown in Figure 1 eight areas (consisting of collections of OAs with high VLI values) were identified as priority neighbourhoods. The partnership then explored additional qualities about each neighbourhood. This included geographical analysis on resident’s key concerns (using anti-social behaviour variables derived from the British Crime Survey), recorded nuisance incidents and where offenders considered to be at a high risk of re-offending lived.

An assessment of these additional datasets allowed the Safer Middlesbrough Partnership to succinctly capture certain characteristics about each of the eight priority neighbourhoods in its annual strategic assessment.

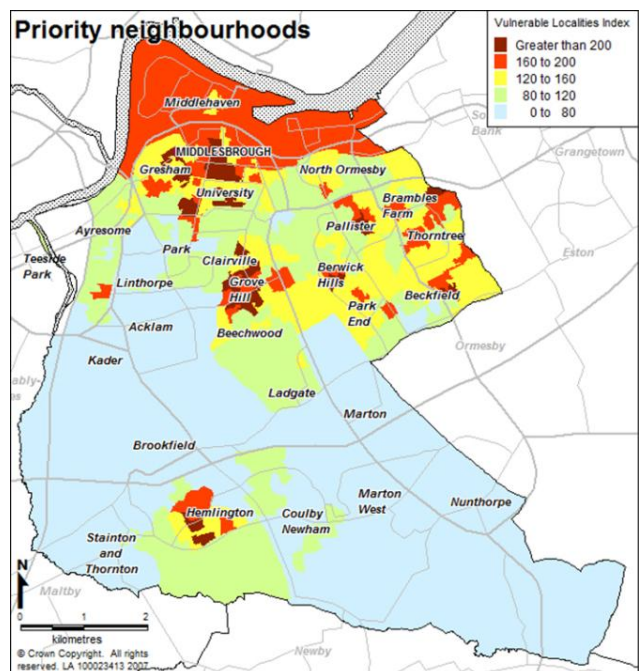


Figure 1 – the VLI calculated for Middlesbrough

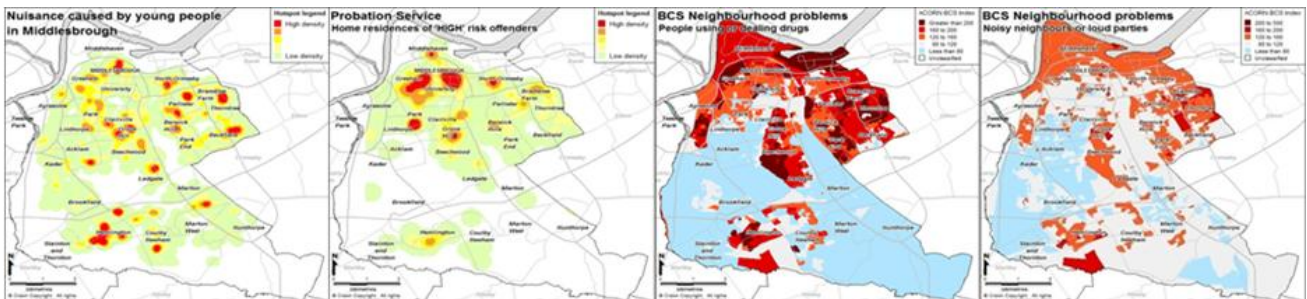


Figure 2 – additional geographical analysis completed

The assessment of these priority neighbourhoods has subsequently helped Middlesbrough focus strategic community safety plans to the eight priority neighbourhoods.