



Nov 1859

Meeting took place to found a hospital specialising in Neurological disorders

1859

Dr CE Brown-Séquard and Dr Jabez Spence Ramskill appointed as physicians



Jan 1860

24 Queen Square rented premises for the hospital



May 1860

The National Hospital for the Paralyzed and Epileptic is opened with 8 beds for females. A ward for male patients was opened in June 1860

14th March 1861

First patient ever admitted (Margaret Warwick) discharged as "cured"



1862

J Hughlings Jackson appointed (best remembered for his seminal contributions to the diagnosis and understanding of epilepsy)

1872

Sir William Gowers appointed (1886-88, Manual of Diseases of the Nervous System Vol I & II published)



1878

The journal Brain founded, with Hughlings Jackson and David Ferrier as founding editors.

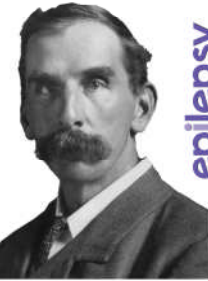
1873

David Ferrier publishes the first detailed map of the cerebral cortex



1880

Sir David Ferrier appointed at The National Hospital



1886

Sir Victor Horsley appointed; he performs the first operation in the world to remove a spinal tumour in 1887

1892

National Society for the Employment of Epileptics (Epilepsy Society) founded and a 1.5 sq km farm bought in Chalfont St Peter



1912

SA Kinnier Wilson joins The National. He publishes his report on Progressive Lenticular degeneration (Wilson's disease)



1925

Dr James Collier begins weekly public demonstration of select cases

1928

Macdonald Critchley appointed (author of 'Parietal Lobes', 1953)

On the shoulders of giants

Queen Square Alumnus Association
2013 International Meeting
UCL Institute of Neurology London
July 8-9



1942

Dr E.A. Carmichael appointed Director of the Neurological Research Unit of the MRC at the National Hospital (until 1961)

1955

RW Gilliatt, first chair of Neurology at the Institute of Neurology (from 1962 to 1987), appointed

1956

Dr. John Walshe first described the use of penicillamine in Wilson's disease while working at UCLH.

1962

Establishment of a university department at Queen Square.

1966

Prof Ian McDonald appointed (with Tom Sears he described pathology of demyelination in multiple sclerosis)

1977

New Queen Square House building completed, used to house researchers.

1986

Professor Anita Harding, one of the world leaders in neurogenetics, appointed

1987 - '92

Ian Holt, John Morgan-Hughes and Anita Harding described for the first time a pathogenic mtDNA mutation.



First ever prenatal mtDNA analysis is described by Harding's team

1987

Professor David Marsden appointed (1363 publications, and mentor to many current Queen Square Professors and Alumni) He founded the *Movement Disorder Society* with Prof Stanley Fahn in 1985

1987

The Queen Square Brain Bank (QSBB), (which now houses the largest collection of parkinsonian brains in the world) founded by Profs Marsden and Lees.

1994

Department of Cognitive Neurology and Functional Imaging Laboratory (now the Wellcome Centre for Neuroimaging) founded

1997 - '99

Institute of Neurology merges with UCL

National and international epidemiological studies on epilepsy spearheaded by Prof Simon Shorvon

2001 - '04

McDonald Criteria accepted and used for the diagnosis of MS

Discovery of genes associated with Parkinson's disease by John Hardy, Nick Wood and Andrew Lees

2002

First academic Unit for Functional Neurosurgery in the UK opens at the Institute of Neurology, led by Marwan Hariz

2004

Dementia Research Centre founded

2006

Education Unit formed

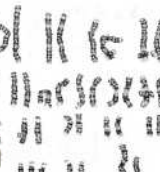
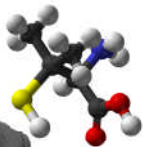
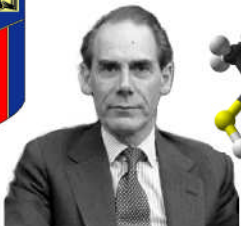
2007

MRC Centre for Neuromuscular Disease created

2009

Queen Square Textbook of Neurology published

1950 Institute of Neurology established



First MSc course offered (MSc Clinical Neuroscience)

