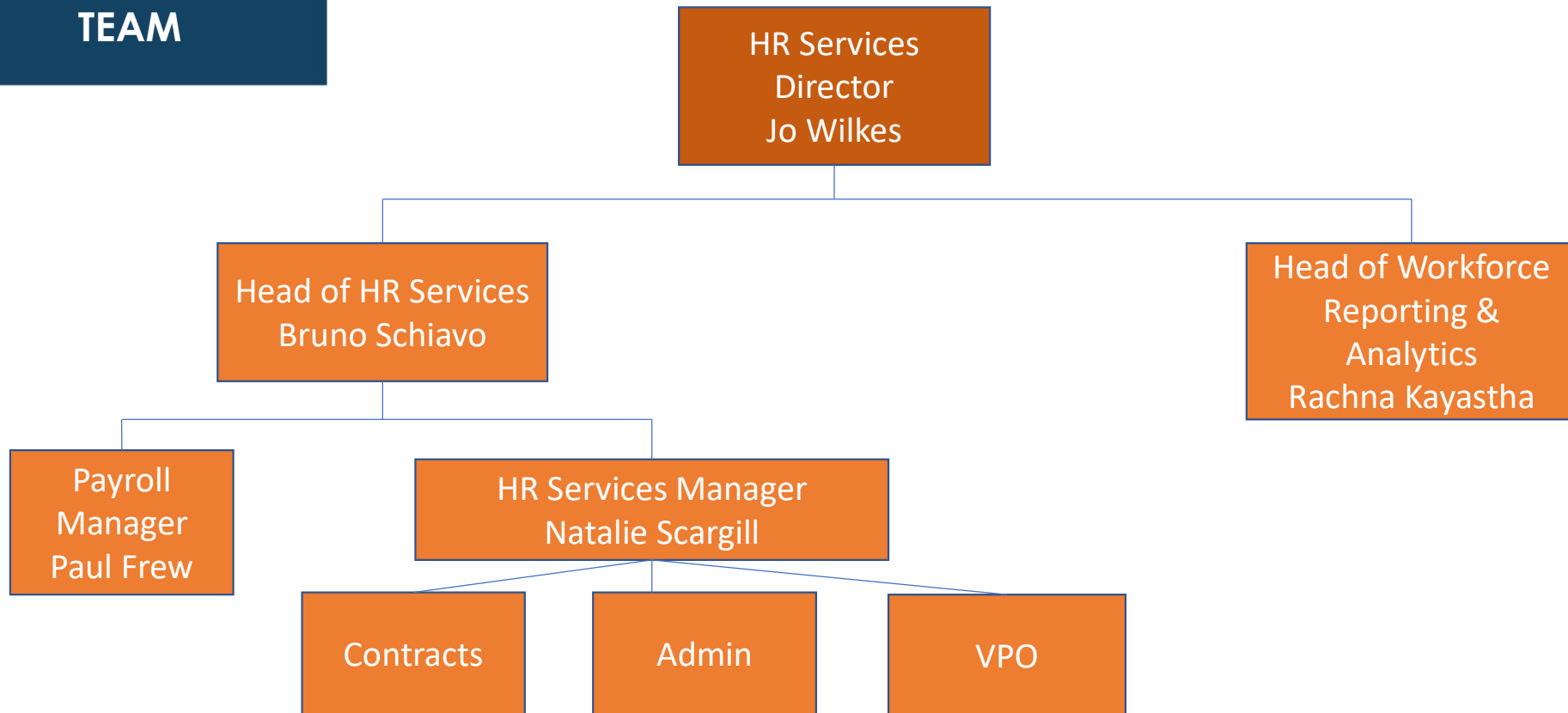




The PS HUB

HR Services Organisation Charts July 2023

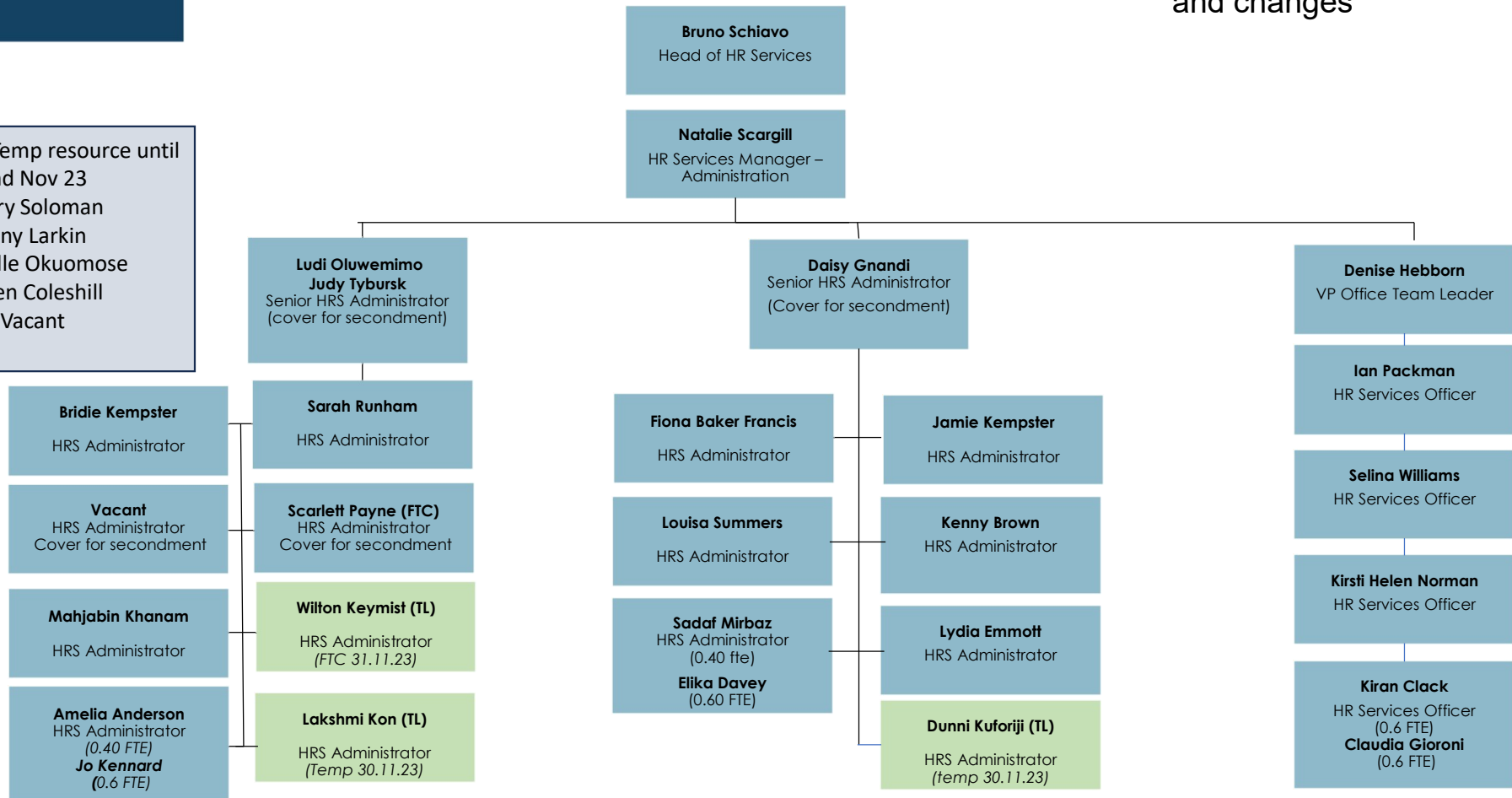
**MANAGEMENT
TEAM**



EMPLOYEE ADMINISTRATION

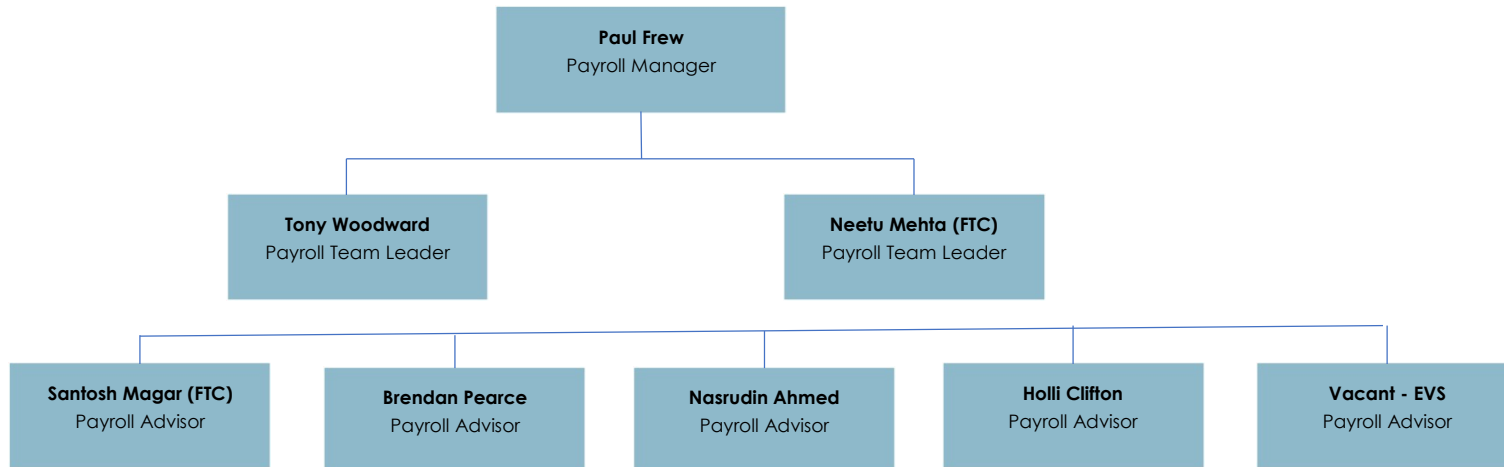
Responsible for all lifecycle administration, including maternity, paternity (family friendly), contract variations and changes

Additional Temp resource until end Nov 23
 Harry Soloman
 Tony Larkin
 Michelle Okuomose
 Aiden Coleshill
 Vacant



PAYROLL

Responsible for the monthly Payroll Cycle and provision of statutory and regulatory reporting to internal and external providers



WORKFORCE REPORTING & ANALYTICS

Responsible for delivering workforce information (from old and new HR Systems), Key workforce indicators, HESA, system auditing, internal and external surveys (UCEA, Sickness, ONS), FOI staff information, system integration advice and guidance

