



# UCL

## Health Justice Partnership



The Potential of Health Justice  
Partnerships in Integrated  
Care Systems

Wednesday 15<sup>th</sup> February 2023

University College London Faculty of Laws

PROGRAMME

## About the workshop



Taking action on poverty and health inequality is ever more important for the NHS, as the current cost of living crisis increases hardship among communities. The consequences for health and wellbeing will be felt most keenly among low income and vulnerable patient groups.

Health justice partnerships are targeted interventions that support patients with social and economic circumstances that are root causes of health inequality. They are partnerships between health services and organisations specialising in welfare rights. Advice on welfare rights issues is integrated with patient care, helping people resolve problems relating to benefits, debt, housing, employment and immigration, among others. This can support those in the hardest circumstances to maximise their health and wellbeing.

This one-day in-person workshop is an opportunity to learn about health justice partnerships and how they are being implemented across the country in a range of NHS settings. We will be joined by speakers who are engaged in service delivery, policy and research, who will provide examples and insights from their work.



# Programme

## 09:15 - 10:15 Registration and refreshments

### 10:15 - 11:30 Plenary session 1: Introducing Health Justice Partnerships

**Session Aims:** To discuss the links between law and health, highlight the opportunities and impacts of Health Justice Partnerships and communicate their importance within current policy objectives.

**Chair:** Professor Dame Hazel Genn

#### **Speakers:**

- \* Professor Dame Hazel Genn, Director, UCL Centre for Access to Justice
- \* Natalie Davis, Head of Legal Support Policy, Ministry of Justice
- \* Cedi Frederick, Chair, NHS Kent and Medway Integrated Care Board
- \* Paul Sweeting, Insight and Performance Partner, Macmillan Cancer Support

#### **Q & A Session**

## 11:30 - 11:45 Comfort Break

### 11:45 - 13:00 Plenary session 2: Health Justice Partnership case studies

**Session aims:** To showcase Health Justice Partnerships based in diverse healthcare settings, highlighting their activities and achievements.

**Chair:** Dr Tammy Boyce

#### **Speakers:**

- \* Catherine McClennan, Director, Cheshire and Merseyside Women's Health and Maternity Partnership
- \* Sally Causer, Executive Director, Southwark Law Centre
- \* Melanie Gongga, Director & Head of Legal Practice, Springfield Advice & Law Centre
- \* Damon Gibbons, Chief Executive, Centre for Responsible Credit

#### **Q & A Session**

## 13:00 - 14:00 Lunch

### **14:00 - 15:00 Plenary session 3 (panel discussion): Implementing Health Justice Partnerships**

**Session aims:** To provide practical information and advice on service design and development, focussing on good practice and how to develop successful partnerships.

**Chair:** Dr Sarah Beardon

#### **Speakers:**

- \* Sarah Beardon, Senior Research Fellow, UCL Health Justice Partnerships team
- \* Vicky Smyth, Acting Group Manager, Health Improvement, Derbyshire County Council
- \* Gary Vaux, Head of Money Advice Unit, Hertfordshire County Council

#### **Q & A Session**

### **15:00 - 15:15 Closing message**

**Speaker:** Matthew Smerdon, Chief Executive, The Legal Education Foundation

### **15:15 - 15:30 Comfort break**

End of event for online attendees

### **15:30 - 16:30 Group discussions: Where next for you**

**Session aims:** To provide an opportunity for delegates to share learning and ideas, and to consider how they could develop Health Justice Partnerships in their region or area of work.

#### **Facilitators:**

- \* Dr Sarah Beardon
- \* Dr Tammy Boyce
- \* Dr Natalie Byrom
- \* Shiva Riahi

### **16.30 - 18.00 Refreshments and networking**

# Speakers



**Professor Dame Hazel Genn**  
**DBE, KC, FBA, LLD**  
Director, UCL Centre for Access to

Dame Hazel Genn is Professor of Socio-Legal Studies in the Faculty of Laws at UCL and Director of the UCL Centre for Access to Justice, which she founded in 2013. She is a leading empirical legal researcher and expert on access to civil justice. Her work has influenced policymakers in relation to the provision of legal aid and the social and health effects of unmet legal need. Between 2016-2018 she developed the activities of the UCL Centre for Access to Justice to include an innovative health justice partnership with a GP practice in East London delivering free social welfare legal services to low income and vulnerable patients within the practice. She is currently directing a National Strategy for Health Justice Partnership, funded by The Legal Education Foundation. Dame Hazel has been appointed to numerous public service roles, In recognition of her contribution to the justice system, she was awarded a CBE in 2000 and DBE in 2006.



**Natalie Davis**  
Head of Legal Support Policy, Ministry of Justice

Natalie leads the Legal Support Policy team in the Ministry of Justice. This team is responsible for implementation of the Legal Support Action Plan which sets out a range of activities to better understand the value of early intervention to help people resolve their legal problems before going to court. The Legal Support policy team is based in the Access to Justice Directorate in the Ministry of Justice, working closely with the legal aid, dispute resolution and civil justice teams to deliver access to justice. Prior to this role, Natalie worked on a range of complex policy areas across various departments in central government.



# Speakers



## **Cedi Frederick**

Chair, NHS Kent and Medway Integrated Care Board

During a career that has spanned 40+ years, Cedi has held a number of senior management and chief executive positions across the public, Not-for-Profit and private sectors.

In addition, with over 30 years' experience as a member of the boards of housing, social care and sporting national governing bodies, several housing associations and voluntary organisations, Cedi has held Non-Executive Director and Chair roles within the NHS and a university Governor role. Cedi is currently Chair of NHS Kent and Medway, Chair of the Health and Europe Centre, Chair of the NHS London's Vaccine Legacy Equity Group and is a Non-Executive Director of Sage Housing Ltd.

Cedi is owner and Managing Director of Article Consulting Ltd, a company that works with the 'Leaders of Today and Tomorrow', the CEO of Consiliaris Digital Systems, a health tech start-up, and runs a successful executive coaching and mentoring practice.

On four separate occasions, Cedi was named as one of Britain's '100 Most Influential Black People'; described as '...unsung hero of the Third Sector, who has changed as many lives in his life outside of work as he has in his job'. In 2015, Cedi was recognised as one of the '1,000 Black & Asian Heroes 1950-2010' by Our Heritage TV.



## **Paul Sweeting**

Insight and Performance Partner, Macmillan Cancer Support

Paul Sweeting joined Macmillan Cancer Support in 2016. Initially part of their benefits advice service development team, he is now based in the organisation's Insight and Performance Division and is responsible for leading a wide range of projects aimed at utilising data, research and evidence to improve the support that people living with cancer receive.

Prior to joining Macmillan, Paul worked in field of Social Justice after initially training as a Welfare Rights Advisor in the early 1990's. His previously held roles include Coordinator of the Brighton and Hove Strategic Advice Partnership, Lead Officer for Financial Inclusion in the London Borough of Newham and Advice Service Manager at London Advice Services Alliance (LASA).

# Speakers



## **Dr Tammy Boyce**

Senior Research Associate, UCL Institute of Health Equity & Research and Policy consultant, UCL Health Justice Partnerships team

Tammy Boyce is working with the team at HJP, making links with the NHS and social care. She is co-author of both the [Marmot Review 10 Years On](#) and the 2010 Marmot Review. Tammy has worked closely with international organisations, national and local governments and third sector organisations on health inequalities, social justice, health and social care policy and the social determinants of health.



## **Catherine McClennan**

Director, Cheshire and Merseyside Women's Health and Maternity Partnership

Catherine has worked in Public Sector development and improvement roles for over twenty-five years. She has held national policy positions, advising governments on improving education and skills, reducing inequalities, and business and community development. She has managed national innovation and transformation funds and led large scale delivery programmes.

Catherine has led on service transformation as Programme Director for Cheshire and Merseyside Women's and Children's Services Partnership since 2018. Since June 2022 she has led on the establishment of the Women's Health and Maternity Vision and Programme for Cheshire and Merseyside, as Director.

Her role provides leadership for the Local Maternity and Neonatal System and setting out a vision, strategy and service improvements for all areas of women's health; including reducing health inequalities and implementing initiatives which improve clinical outcomes and the wellbeing of women, babies and families. She is an advocate of social prescribing and community engagement and a working mum of 3 children. She is a Trustee of the University of Liverpool Maths College and is a champion for young people, lifelong learning and workforce development.



# Speakers



## **Sally Causer**

Executive Director, Southwark Law Centre

Sally has worked in voluntary sector advice agencies in London since 1983, firstly as an adviser, then in management roles, and was the CEO of Citizens Advice Wandsworth from 1995-2002. Sally has been the director of Southwark Law Centre since August 2015.

Sally is passionate about helping to give marginalised groups a voice in shaping local policies and services, and accessing their rights.

Sally has worked as a Freelance consultant providing training, fund raising support and project management on a range of areas relating to the voluntary advice sector and in 2007 carried out the evaluation for the then Law Centre Federation: Sexual Orientation, Religion or Belief and Age Employability Equality project.

**From 2009-2015** Sally was Director of Partnership and Development for Citizens Advice Southwark. As part of the role she set up the forum for Equalities and Human Rights in Southwark, providing training and support for local agencies and Tenant Residents Associations around equalities issues, including tackling hate crime.

### **August 2015- present Executive Director Southwark Law Centre**

Oversees 34 members of staff and a budget of almost £2m

### **Current volunteer work**

Chair: Southwark Travellers Action Group



## **Melanie Gongga**

Director & Head of Legal Practice, Springfield Advice & Law Centre

I started my legal career in private practice, nearly 28 years ago, where I was privileged to be able to train and gain experience in a wide variety of legal fields. I trained under the supervision of many now notable names in the judiciary. I qualified to become a housing solicitor, with welfare benefits and community care services inter-woven in my work.

Throughout, my career, my core values have not changed – and those are to a legal system that protects the most vulnerable in our society; provides properly-funded Legal Aid, advice and representation services; and that functions to give voice to marginalised communities, ensuring they are able to access and enforce the rights given on paper.

I moved from private practice to Law-Centre-working 20 years ago, becoming the Director & Head of Legal Practice at Springfield Advice & Law Centre in 2014, which was a time of considerable challenge, in view of the devastating effects of LASPOA. I am proud that our Law Centre has survived to reach its 40th birthday and that it retains its commitment to representation for those vulnerable and/or marginalised, with a firm focus on providing assistance to those from within the mental health community.

# Speakers



## **Damon Gibbons**

Chief Executive, Centre for Responsible Credit

Damon is the founder and Chief Executive of the Centre for Responsible Credit - a registered charity on a mission to change credit for good and improve support for people with debts.

Damon has more than thirty years' experience of designing, providing, commissioning, and evaluating services to meet the needs of disadvantaged groups and communities. He has also been involved in consumer campaigns at the national and international levels on issues of credit, debt, and financial exclusion for over a decade.

Prior to founding the Centre for Responsible Credit in 2010, Damon was co-chair of the Debt on our Doorstep campaign, which ran from 1999 onwards and campaigned for caps on the cost of credit; greater funding for affordable lenders, and for more effective responsible lending requirements.

During this period, he worked in local government with responsibilities for advice and economic development, and between 2008 and 2010 as the Head of Policy for the Centre for Economic and Social Inclusion. However, his initial career was spent as a money and welfare rights adviser in the voluntary sector.

Damon's first degree was in Economics and Politics, and he also holds an MA (Distinction) in Public Policy.



## **Dr Sarah Beardon**

Senior Research Fellow, UCL Health Justice Partnerships team

Sarah is an interdisciplinary researcher who started out in public health and health services research before joining the UCL Faculty of Laws in 2016. She has worked on the topic of health justice partnerships since that time, engaging with services across England and with international partners. She completed her PhD in 2022, which focused on the implementation of health justice partnerships and drew largely on qualitative methodologies. Within her current role, she continues to undertake research, teaching and engagement on the topic. Her wider professional interests are in health inequalities, social determinants of health and delivery of healthcare services.

# Speakers



**Vicky Smyth**

Acting Group Manager, Health Improvement,  
Derbyshire County Council

Vicky Smyth has spent the last 23 years working in local government. She graduated with a Masters in Public Health from Birmingham City University in 2018, and currently works as a Group Manager in the Public Health Team at Derbyshire County Council. She is committed to tackling health inequalities within the context of the wider/social determinants of health. Her current portfolio includes health improvement, food insecurity, financial inclusion, supported employment and housing and health. Vicky is also strategic lead for Derbyshire's Public Health Advisory Service.

Email [Vicky.smyth@derbyshire.gov.uk](mailto:Vicky.smyth@derbyshire.gov.uk)



**Gary Vaux**

Head of Money Advice Unit, Hertfordshire County Council

Starting out in the late 1970's as an advice worker, I worked as a social worker throughout the early 80's before returning to advice work in various London Boroughs, and since 1996 in Hertfordshire as Head of a Money Advice Unit. I am chair of the Local Government Association's social security advisers group, on the Board of Rightnet and a freelance trainer and writer for Child Poverty Action Group, Fostering Network and other organisations

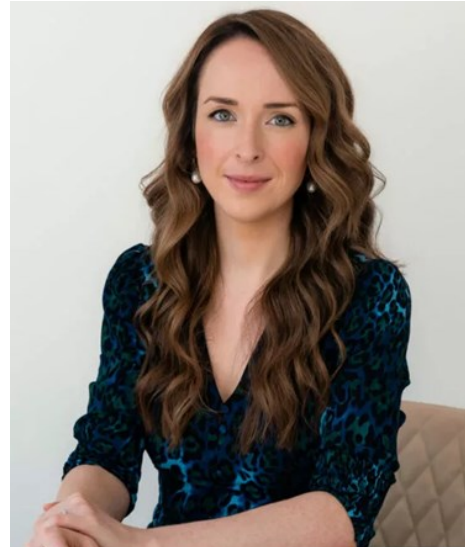
# Speakers



## **Matthew Smerdon**

Chief Executive, The Legal Education Foundation

Matthew is Chief Executive of the Legal Education Foundation, a grantmaking trust focusing on law and social justice. Over recent years, the Foundation has supported work to advance health justice partnerships through research, strategy development and testing models. As a former director of community work in a busy east London community centre, Matthew oversaw work to integrate social welfare legal advice into primary health care settings and saw directly the health benefits of this service. He is an enthusiastic advocate of this approach being applied more widely and more systematically across health services.



## **Dr Natalie Byrom**

Founder and Director of the Justice Lab initiative, and Director of Research at The Legal Education Foundation

Between 2018 and 2020 Dr Byrom was seconded to the Ministry of Justice, part of the UK government as Expert Advisor on Open Data and Academic Engagement. The [recommendations](#) arising from her secondment have been [accepted by government](#) and are currently being implemented as part of the data strategy underpinning the ongoing digital court reform programme. Her recommendations led to the creation of the Shadow Senior Data Governance Panel, on which she now sits, and the decision to create the state funded and administered judgement repository and publication service at [The National Archives](#).

Dr Byrom sits on the [Civil Justice Council's Futures Group](#), a body established to advise England and Wales most senior civil judge, the Master of the Rolls, on the impact of technology on the administration of and access to justice. In 2021 she was appointed by the President of the Family Division as data expert to the [Family Transparency Implementation Group](#), a group tasked with improving the transparency of the family courts in England and Wales.

Dr Byrom has given evidence to a number of parliamentary committees including the Justice Select Committee ([open justice](#) and [constitutional implications of Covid-19](#)) and the House of Lords Constitution Committee on issues relating to data collection, sharing and governance. Her writing on these issues has been published in the legal and national press. She is part of the BBC Expert Women Network and currently sits on the Administrative Justice Council for England and Wales, where she is a member of the steering group. In August 2022 she was appointed to the Civil Justice Council as member for information architecture and econometrics.



# Speakers



## **Shiva Riahi**

Head of Projects, UCL Centre for Access to Justice

Shiva is the Head of Projects at the UCL Centre for Access to Justice. She has recently undertaken a yearlong secondment as a policy advisor in the Ministry of Justice's Legal Support and Fees Team where she is working on developing the Department's policy on co-located advice hubs. She was previously involved in the delivery of the CAJ's own health justice partnership when it was based at the Guttman Centre in East London.

She holds an LLB and Masters in Public Administration (MPA) from UCL as well as a BA in Philosophy and International Relations from Tufts University.

**Find out more:**

**[ucl.ac.uk/health-of-public/  
health-justice-partnerships](https://ucl.ac.uk/health-of-public/health-justice-partnerships)**