



UCL

The background of the entire page is a photograph of a densely packed, multi-story residential building complex, likely a favela or informal settlement, built on a hillside. The buildings are constructed from various materials, including brick and concrete, and are closely packed together. The image is split horizontally: the top half is in color, showing the natural colors of the buildings and the surrounding greenery, while the bottom half is overlaid with a semi-transparent teal color. The text is overlaid on the teal section.

UCL Institute for Global Health

Postgraduate research
programmes



UCL's Institute for Global Health (IGH) is a renowned centre of research and teaching excellence in global health. We undertake multidisciplinary research and collaborate across disciplines to find solutions to global health problems.

Our focus is on applied research that achieves lasting impact on a large scale. We collect evidence in the real world, evaluate interventions and provide practical solutions for policy-makers.

Our MPhil and PhD programmes are relevant to a variety of disciplines across the field of global health.

Why study with us?

- Gain relevant skills to pursue a career in research, medicine, health services, laboratory science, policy, or public health.
- Experience the realities of global health work, at community, national or international levels.
- Work with experienced and world-renowned researchers in the field.
- Benefit from a range of international and local research opportunities: carry out field work overseas; set up a study within the UK; or use data from existing studies working with the respective IGH-based Principal Investigator.
- Join a community of around 130 academics and 50 postgraduate research students with a range of experience and expertise.

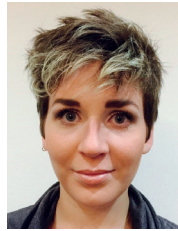


Key research areas

- Climate change, migration, conflict and health
- Clinical research
- Disease modelling and evaluation
- Infectious diseases including HIV, tuberculosis and hepatitis
- Molecular epidemiology and translational research
- Population sexual health
- Gender and global health
- Economics of global health and development
- Methodology of global health trials
- HIV epidemiology
- Non-communicable diseases
- Maternal, newborn, child and adolescent health

Find out more about our research:

www.ucl.ac.uk/igh/research



What our students say

“As part of the London NERC Doctoral Training Partnership I collaborate with and learn from academics across UCL, ensuring that my research is well-informed and

relevant within the wider field. It also empowers me to aim for the highest possible impact of my research, very important for modern scientists. UCL has supported me in undertaking a three-month internship with the UN Migration Agency in Geneva; invaluable for providing evidence for policy.”
Rebecca Parrish, PhD student

Programme details

- Duration: three years (full-time) or five years (part-time).
- Students, with help from their supervisors, finalise their research proposal during the first year, informed by the current literature and practice, which may also include collecting preliminary data or piloting a questionnaire.
- From September 2018, a MD(Res) programme is also available. Contact **igh.researchdegrees@ucl.ac.uk** for further details.

How to apply

To be considered for a place, a formal online application to UCL must be submitted for consideration, which must include a 3-4 page research proposal. Find out more: **www.ucl.ac.uk/igh/study/research-degrees**



Scholarships and bursaries

UCL offers a range of financial awards aimed at assisting both prospective and current students with their studies. At IGH we offer very limited funding opportunities, and many of our students secure funding from governments, research councils, and other agencies, or are otherwise self-funded. Find out more: www.ucl.ac.uk/scholarships

Contact us

Website: www.ucl.ac.uk/igh

Email: igh.researchdegrees@ucl.ac.uk

Twitter: [@UCLGlobalHealth](https://twitter.com/UCLGlobalHealth)



What our students say

"My research is based at the Royal Free hospital, focusing on identifying predictors of clinical outcomes of HIV-positive people and investigating differences between

key groups. It feels good to be this close to the clinic and patients, who will hopefully ultimately benefit from my research. IGH is a truly inspiring place to study and work – so many interesting courses, seminars and opportunities are offered to students."

Sophia Rein, PhD student