

Accessible Filmmaking Day

Venue Access Instructions

Map of UCL's Bloomsbury campus



<https://www.ucl.ac.uk/estates/our-campuses/accessible-campus>

3 pm talk: 225, Central House (Second Floor)

There is step-free access to Central House from the main entrance, located at 14 Upper Woburn Place, London WC1H 0NN. The ramp

Please use the stairs or the lift to reach the second floor. Exit the lift to your left and head through a set of doors into an unfurnished room. Use the door on the far left (Exit sign) and walk down the corridor until you find Room 225.



5 pm screening: Gustave Tuck Lecture Theatre at North-South Junction (Third Floor)



There is step-free access to the North-South Junction and the South Cloisters via the Gower Street entrance (opposite the Cruciform building) as well as from the South Quad (Print Room café).

The easiest step-free access to reach the lecture theatre is to enter through the main gates on **Gower Street**, opposite the Cruciform building. The grand Wilkins Building will be directly in front of you. Head towards this building and turn right. (You do not need to climb the stairs). There will be a doorway leading into the South Cloister building, ignore this and take the second door which will be in the far right-hand corner. Upon entering this door turn right and walk through a second set of doors keeping to the right again. There will be a staircase in front of you with signs leading to the Gustave Tuck lecture theatre. Walk up the stairs, or take the lift, to the third floor (two flights) and the lecture theatre will be on your right-hand side.

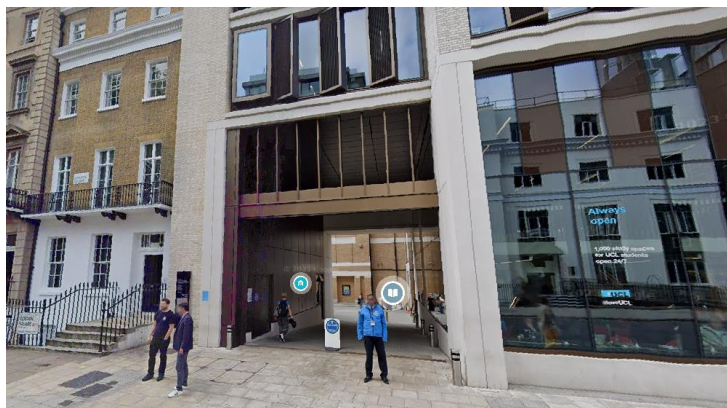
If you are attending both the talk and the screening, you can use the **Student Centre** access (27-28 Gordon Square, London WC1H 0AHO). Head out of Central House, turn left and cross the street towards Tavistock Square. Turn right and head to Endsleigh Place and straight ahead to UCL's Gordon Square buildings (past Archaeology). Take the ramp

How to access UCL's Bloomsbury campus

[Central House](#) (14 Upper Woburn Place, London WC1H 0NN)



[Student Centre](#) (27-28 Gordon Square, London WC1H 0AHO)



[Gower Street](#) (Gower St, London WC1E 6AE)

