

Installation notes – ICECUP, ICE-GB and DCPSE

Thank you for purchasing one of our corpora. You have in your hand the result of many years of research!

Our software, ICECUP, will run on a Windows desktop, laptop or server, but the method for installation can vary depending on the system that you are running.

The CD package contains software published in 2006, which is compatible with 32-bit versions of Windows. However, today most computers run 64-bit Windows.

- If you are using a **32-bit Windows** personal computer, you can simply insert the CD and install it normally. The install program should open automatically as described in the *Getting Started* manual (there is an ‘autorun’ file on the CD), and both ICECUP and your corpus will install to a location (C:/ICE) that you can change if required. You might get a Windows ‘User Account Control’ warning that you are installing a new program but you can press OK and continue.
- However, if your computer is running **64-bit Windows**, this method will not work. Inserting the CD will produce an error and the install program will not run. ICECUP will also refuse to start.

How do you know if you are running 64-bit Windows?

- Insert the CD and see what happens – if the installer refuses to run, saying that ‘Install.exe is a 16-bit program’, then you are running 64-bit Windows.
- Alternatively, open **My Computer** and click on **System Properties**. Look under ‘System type’. This should tell you which version of Windows you are running.

How to install the corpus and software manually

You will need to do two things. Install the corpus manually from the CD, and download and install the latest 64-bit compatible software from our website.

The good news is that you will also get the very latest version of ICECUP! 32-bit Windows users may also wish to upgrade their software after installation. To do this, install normally and then go to Step 2 below.

In the following pages we explain how to do this step-by-step.

Good luck – and enjoy!

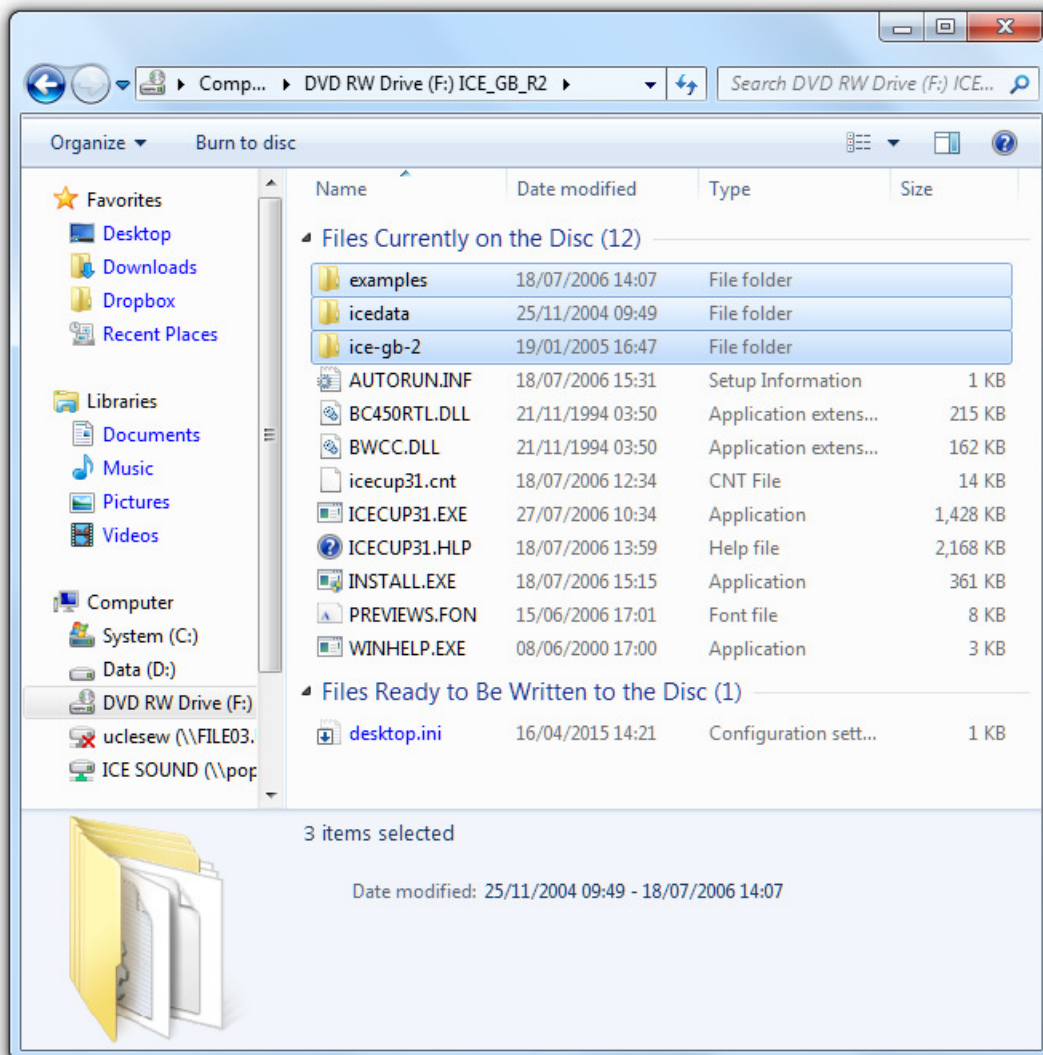
Sean Wallis
Survey of English Usage, UCL, April 2016

Step 1. Install the corpus manually from the CD

Open **Windows Explorer** and insert the supplied CD in your drive.

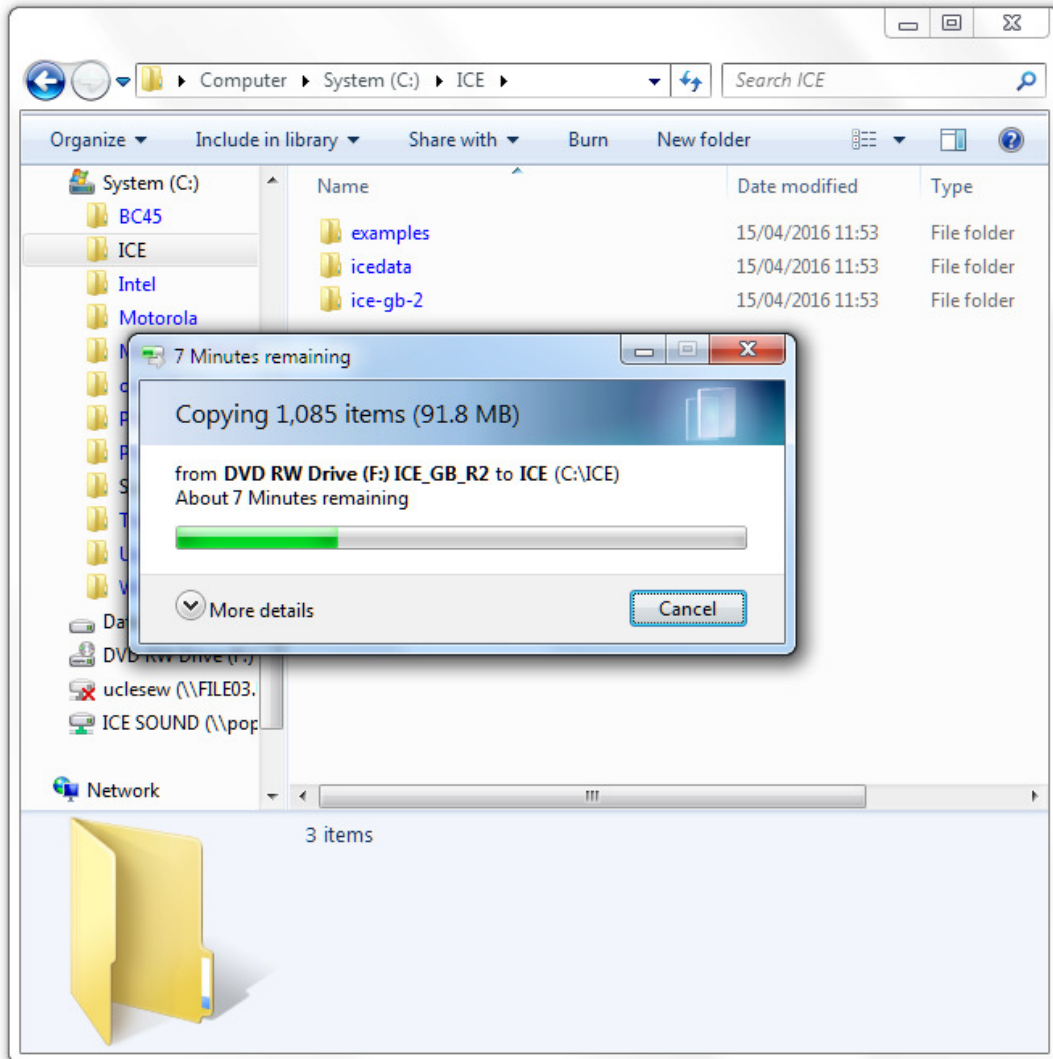
Do **not** allow `install.exe` to run if it tries to do so, and close any error messages that Windows might pop up.

- Click on the CD/DVD drive. In the screenshot below this is labeled 'F:'.
- Select the three directory folders, **examples**, **icedata**, and **ice-gb-2** or **dcpse**, but do not select the files below these. Press <Ctrl> and 'C' together to copy the files.



- Next, select a hard drive and press the **New folder** button to create a target directory folder. We will install the corpus at this location. Let's call this 'C:/ICE', but it could be 'D:/ICE', or any other directory.

- Open the newly-created folder. Press <Ctrl> and ‘V’ simultaneously to paste the files into the directory.
- A progress window will appear as the files are copied. You will probably need to wait a few minutes.



Stage 2. Install the software from our website

- Open your favourite browser and go to <http://tinyurl.com/icecup-beta#rc>. This will go straight to the page on our website where you can download the software.
- At the time of writing the new version of ICECUP has *Release Candidate* status, which means that we haven't published the software as a new CD – hence this installation note – but it has been thoroughly tested.
- Click on the first ‘patch’ **exe** file. The zip file lets you inspect the contents of the package before you install it. The exe file includes a self-extractor program that helps

you install it. You want to install the ‘patch’ package (the software only). You already have a copy of the full corpus, so you don’t need a sample version!

Release Candidate 2 contains

- a revised online Help file for ICECUP 3.1.1 converted to HtmlHelp format.
- an alternative XP version of ICECUP for backwards compatibility.

This version, ICECUP 3.1.1, includes **improvements in FTFs** for intelligently searching co-ordinated elements.

The patch package is for people who already have ICE-GB R2 or DCPSE. It contains the minimum set of files that you will need to use the new version of ICECUP with your existing software.

Date of release	zip	exe	expanded
1 March 2016	3.71MB	3.83MB	4.9MB

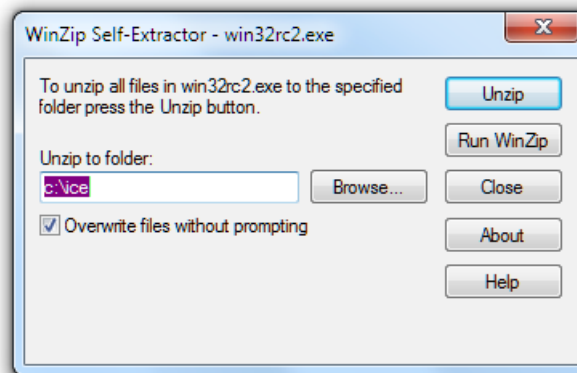
RC2 is also available with the ICE-GB sample corpus.

The sample corpus package is for people who simply want to try the software.

Date of release	zip	exe	expanded
1 March 2016	4.66MB	4.77MB	8MB

Either way the instructions are essentially the same.

- The software will download, and you should then click on it to install it.
- You may get an ‘invalid certificate’ warning. Windows is being careful, but you are safe to run this file. Press **Run**.



- Check the ‘Unzip to folder’ location in the window. In our case we are installing to **C:\ICE**, so we don’t need to change anything.
- Press **Unzip** to install the software. Click **OK** when finished and **Close**.

You should test the installation by running ICECUP immediately.

- Go back to **Windows Explorer** and click on **ICECUP 3.exe**. This version will run on *any* version of Windows from Windows 10 to Windows XP (which Microsoft is no longer supporting). It should start up, detect the corpus you installed and open it.
- Close ICECUP again.

Next, choose the version of ICECUP you want to keep.

- If your computer is running Windows above XP and you are unable to upgrade, just delete ICECUP 3-notXP.exe.
- Alternatively, if you are running Windows 7, 8 or 10, delete ICECUP 3.exe and rename ICECUP 3-notXP.exe as ICECUP 3.exe.

You can create a shortcut to ICECUP and put it on your desktop.

Unblocking help

Finally, you may need to unblock the help file. By default, Windows blocks help and other files downloaded from the internet as ‘potentially harmful’. If it is blocked, you won’t be able to access help from ICECUP.

- Double-click on the file **icecup31.chm** to open it.
- If you see a warning message, headed ‘Open File – Security Warning’ asking if you really want to open the file, you need to unblock it.
 - First, **uncheck** the box marked ‘Always ask before opening this file’.
 - Then press **Open**.

(If you *don’t* see a warning message, Windows thinks that the help file is already unblocked and you should not need to do anything.)

- Close the help file and restart ICECUP. As a final test, in ICECUP click on a help topic, e.g. **Help | Introducing ICECUP**. If this doesn’t work, repeat the first step.

Where to find more information on installation options

ICECUP is designed to be capable of running in a number of different configurations.

It allows you to install some files on one drive and other files on another. You may wish to access audio from a server on a local area network, but keep a copy of the corpus on your desktop computer for speed. Or you may wish to change ICECUP’s target location for exporting data from the corpus.

To install the audio recordings, please review this online documentation. More information is to be found under **Technical Notes | Installing the corpus and software** in the help file. Now that you have installed the Help, you can access this.