

UCL MUSEUMS IN ONE HOUR

self-guided tour



The Tarkhan Dress

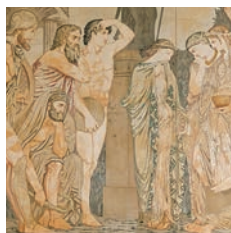
Petrie Museum
Middle of the main gallery on right

This dress was excavated from a tomb at Tarkhan in 1913 and dates to Dynasty 1 (3050 - 2800 BC). It is the oldest garment from Egypt on display in the world.

Extinct Animals Display

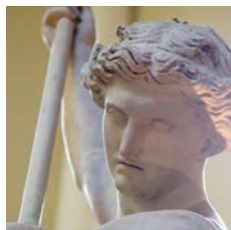
Grant Museum

An amazing collection of recently extinct species including thylacines, dodos and a quagga – the rarest skeleton in the world.



Marmor Homericum

North wall, South Cloisters, Wilkins Building
The inhabitants of Delos listen spellbound as Homer recites the Iliad in this Neo-Classical work commissioned by George Grote, one of UCL's founders. Nearby are the Koptos Lions – the earliest Egyptian sculpture displayed in England.



The Flaxman Gallery

Accessible via entrance to UCL's Main Library; situated under the UCL Dome, Wilkins Building

This rare installation of plaster models showcases the largest collection of works by John Flaxman, one of Britain's foremost historic sculptors.



Jeremy Bentham – The Autolcon

End of the South Cloisters, Wilkins Building.

The preserved body of the utilitarian philosopher. Bentham's belief that education should be for everyone was a governing principle adopted by UCL's founders.

UCL MUSEUMS IN ONE AFTERNOON

self-guided tour

The Petrie Museum of Egyptian Archaeology

Containing the teaching collection of Flinders Petrie – the 'Father of Archaeology' – this is one of the most important museums of Egyptian artefacts outside Egypt.

The Grant Museum of Zoology

An amazing collection displaying thousands of specimens covering the whole of the animal kingdom, including some of the rarest skeletons in the world.

UCL Art Museum

Dedicated to exploring the relationships between making, teaching and collecting art. With over 10,000 objects from the 1490s to the present day, its unrivalled collections comprise of works by award-winning Slade students, revered old masters and celebrated neo-classicist John Flaxman.

UCL Archaeology Collections in the Leventis Gallery

Displays of material from Britain's first Institute of Archaeology, including highlights from the Petrie Palestinian Collection.

Exhibitions in the North and South Cloisters, Wilkins Building

Learn about current research projects at UCL in a dynamic series of displays curated by the researchers themselves. Please note that functions in this space occasionally limit access.

Petrie Museum of Egyptian Archaeology

Malet Place,
University College London,
London WC1E 6BT

Tuesday–Saturday 1–5pm
+44 (0)20 7679 2884
petrie.museum@ucl.ac.uk

Grant Museum of Zoology

Rockefeller Building,
University College London,
21 University Street,
London WC1E 6DE

Monday–Friday 1–5pm
+44 (0)20 3108 2052
zoology.museum@ucl.ac.uk

UCL Art Museum

South Cloisters, Wilkins
Building
University College London,
Gower Street,
London WC1E 6BT

Monday–Friday 1–5pm
+44 (0)20 7679 2540
college.art@ucl.ac.uk

UCL Archaeology Collections

31-34 Gordon Square, London
WC1H 0PY

Monday–Friday 9am–5pm
+44 (0)20 7679 4789
ioa-collections@ucl.ac.uk

