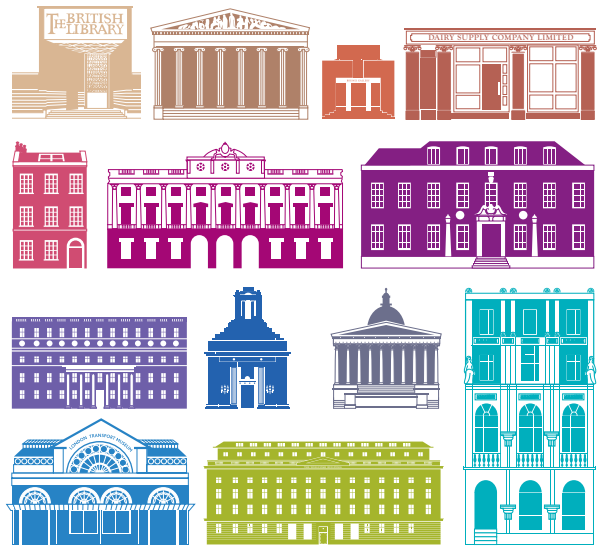


# museum mile



Wander from King's Cross to the River Thames and discover an intriguing collection of 13 extraordinary museums. Feed your curiosity in this unique cultural neighbourhood. From the unusual to the unparalleled – choose your own adventure!

Take in the beauty of Van Gogh at The Courtauld Gallery and Shakespeare's First Folio at the British Library. Marvel at 400 years of anatomical history at the Hunterian Museum and the mix of art with medical science at Wellcome Collection. From the intimate to the iconic, the local and global collections that make up Museum Mile promise inspiring discoveries for all.

[museum-mile.org.uk](http://museum-mile.org.uk)  
@MuseumMileLDN



## THE BRITISH LIBRARY

96 Euston Road  
London NW1 2DB  
+44 (0)1937 546060  
[bl.uk/whats-on](http://bl.uk/whats-on)  
admission free/  
special exhibitions charge

Discover Magna Carta, the Lindisfarne Gospels, Leonardo's notebooks, Mozart's handwritten scores and the Gutenberg Bible alongside beautiful sacred texts, maps, manuscripts, sound recordings and stamps from over the centuries and around the world.

Detail from St Luke's Gospel, Lindisfarne Gospels, AD 710–721.

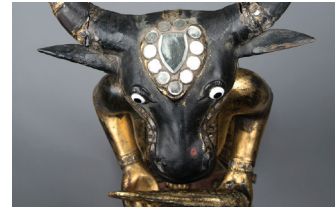


## THE BRITISH MUSEUM

Great Russell Street  
London WC1B 3DG  
+44 (0)20 7323 8299  
[britishmuseum.org](http://britishmuseum.org)  
admission free/  
special exhibitions charge

Founded in 1753, the British Museum's remarkable collection spans over two million years of human history and culture. Six million visitors every year experience the collections from Africa, Asia, Europe, the Americas and the ancient world, including world-famous objects such as the Rosetta Stone, the Parthenon sculptures, and Egyptian mummies.

Aztec serpent from Mexico, Aztec/Mixtec, 15th–16th century AD, carved wood with turquoise mosaic.  
© The Trustees of the British Museum.



## THE BRUNEI GALLERY, SOAS

University of London  
Thornhaugh Street  
Russell Square  
London WC1H 0XG  
+44 (0)20 7898 4915  
[soas.ac.uk/gallery](http://soas.ac.uk/gallery)  
admission free

Dedicated to promoting a better understanding of the art, culture, history and contemporary contexts of Africa, Asia and the Middle East through a changing programme of visiting exhibitions and events, with a permanent rotating display of SOAS's own collections shown in the Foyle Special Collections Gallery.

Pegu Meh Daw ('Royal Mother of Pegu') Myanmar (Burma), c. 1920.  
© SOAS Collection.



## THE CARTOON MUSEUM

Cartoon Museum  
35 Little Russell Street  
London WC1A 2HH  
+44 (0)20 7580 8155  
[cartoonmuseum.org](http://cartoonmuseum.org)  
admission charge

Original British cartoon and comic art from the 18th century to the present. From Steve Bell to Hogarth and Gillray, Heath Robinson to Ronald Searle, Manga to favourite characters like Dennis the Menace and Andy Capp, there's something for everyone.

Queen Elizabeth II, 2002.  
© Wally Fawkes.



## CHARLES DICKENS MUSEUM

48 Doughty Street  
London WC1N 2LX  
+44 (0)20 7405 2127  
[dickensmuseum.com](http://dickensmuseum.com)  
admission charge

Visit the beautifully restored Charles Dickens Museum to experience Dickens's house as if he had just stepped out of the door. Explore original manuscripts, furniture, paintings and other items relating to Britain's most popular novelist in the Georgian townhouse in which he wrote *Oliver Twist* and *Nicholas Nickleby*.

© Charles Dickens Museum.  
Courtesy of Siobhan Doran Photography.



## THE COURTAULD GALLERY

Somerset House, Strand  
London WC2R 0RN  
+44 (0)20 7848 2526  
[courtauld.ac.uk/gallery](http://courtauld.ac.uk/gallery)  
admission charge

Come face to face with world-famous art by artists such as Rubens, Monet, Van Gogh and Cézanne. The collection ranges from the Renaissance to the 20th century and is best known for its outstanding Impressionist and post-Impressionist masterpieces.

Vincent van Gogh, *Self-Portrait with Bandaged Ear*, 1889.  
The Courtauld Gallery, London.  
© The Samuel Courtauld Trust.



## THE FOUNDLING MUSEUM

40 Brunswick Square  
London WC1N 1AZ  
+44 (0)20 7841 3600  
[foundlingmuseum.org.uk](http://foundlingmuseum.org.uk)  
admission charge

The Foundling Museum explores the history of the Foundling Hospital, the UK's first children's charity and first public art gallery, established in 1739 by the philanthropist Thomas Coram to care for babies at risk of abandonment. Standing on the original site of the Hospital, through a dynamic programme of exhibitions and events the Museum celebrates the ways in which artists of all disciplines have helped improve children's lives for over 275 years.

Sophia Anderson, *Foundling Girls in the Chapel*, mid-nineteenth century. © Coram in the care of the Foundling Museum.

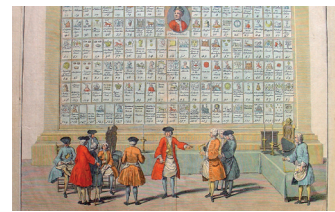


## HUNTERIAN MUSEUM AT THE ROYAL COLLEGE OF SURGEONS

35–43 Lincoln's Inn Fields  
London WC2A 3PE  
+44 (0)20 7869 6560  
[hunterianmuseum.org](http://hunterianmuseum.org)  
admission free

Revealing 400 years of medical history, from one of the oldest anatomical collections in the world to the latest advances in minimal access surgery. Highlights include surgeon John Hunter's collection of human and animal specimens, Lister's first antiseptic spray and Winston Churchill's false teeth.

Anatomical specimens from the Hunterian Collection.



## THE LIBRARY AND MUSEUM OF FREEMASONRY

Freemasons' Hall  
60 Great Queen Street  
London WC2B 5AZ  
+44 (0)20 7395 9257  
[freemasonry.london.museum](http://freemasonry.london.museum)  
admission free

Discover one of the world's finest collections of Masonic material housed at the home of English freemasonry, including pottery, porcelain, glass, silver, furniture, clocks and regalia. The ceremonial areas of the amazing art deco Freemasons' Hall are also available to view.

Bernard Picart, *The Freemasons*, 1736. Engraving.



## LONDON TRANSPORT MUSEUM

Covent Garden Piazza  
London  
+44 (0)20 7565 7298  
[ltmuseum.co.uk](http://ltmuseum.co.uk)  
admission charge

Discover the story of London's transport system and how it has shaped the lives of people living and working in the city. Showcasing original artworks and advertising posters, historic vehicles including the iconic Routemaster bus and the world's first underground steam train. Train simulators and interactive exhibits make the visit enjoyable for all ages.

London by Design gallery.



## SIR JOHN SOANE'S MUSEUM

13 Lincoln's Inn Fields  
London WC2A 3BP  
+44 (0)20 7405 2107  
[soane.org](http://soane.org)  
admission free

Step back in time with a visit to Sir John Soane's Museum – virtually unchanged since his death in 1837. Behind an elegantly severe façade lie architecturally stunning interiors which contain world-class collections of art, sculpture, furniture, antiquities, casts, stained glass, books and models – all contributing to a veritable 'academy of architecture', just as Soane intended.

The Dome Area, Sir John Soane's Museum. Photo: Gareth Gardner.



## UCL MUSEUMS: ART, GRANT AND PETRIE MUSEUMS

UCL, Gower Street  
London WC1E 6BT  
+44 (0)20 7679 2884  
[ucl.ac.uk/museums](http://ucl.ac.uk/museums)  
admission free

University College London (UCL) houses unique collections of art and artefacts. See a dress older than the pyramids at the Petrie Museum of Egyptian Archaeology, a jar of moles at the Grant Museum of Zoology, prints by Rembrandt and Turner at the Art Museum and fossilised footprints up close in the Rock Room.

Specimens from the Grant Museum.  
© UCL Museums.



## WELLCOME COLLECTION

183 Euston Road  
London NW1 2BE  
+44 (0)20 7611 2222  
[wellcomecollection.org](http://wellcomecollection.org)  
admission free

Incorporating an extraordinary mix of exhibitions, events and the world-famous Wellcome Library, Wellcome Collection explores what it means to be human. With a delightful shop and café, the 'free destination for the incurably curious' offers the chance to find inspiring connections between life, science and art.

Wellcome Images, London.



# museum mile

- BL

**THE BRITISH LIBRARY**  
96 Euston Road  
NW1 2DB
- BM

**THE BRITISH MUSEUM**  
Great Russell Street  
WC1B 3DG
- BG

**THE BRUNEI GALLERY, SOAS**  
Thornhaugh Street  
WC1H 0XG
- CM

**THE CARTOON MUSEUM**  
35 Little Russell Street  
WC1A 2HH
- CDM

**CHARLES DICKENS MUSEUM**  
48 Doughty Street  
WC1N 2LX
- CG

**THE COURTAULD GALLERY**  
Somerset House, Strand  
WC2R 0RN
- FM

**THE FOUNDLING MUSEUM**  
40 Brunswick Square  
WC1N 1AZ
- HM

**HUNTERIAN MUSEUM AT THE ROYAL COLLEGE OF SURGEONS**  
35–43 Lincoln's Inn Fields  
WC2A 3PE
- LMF

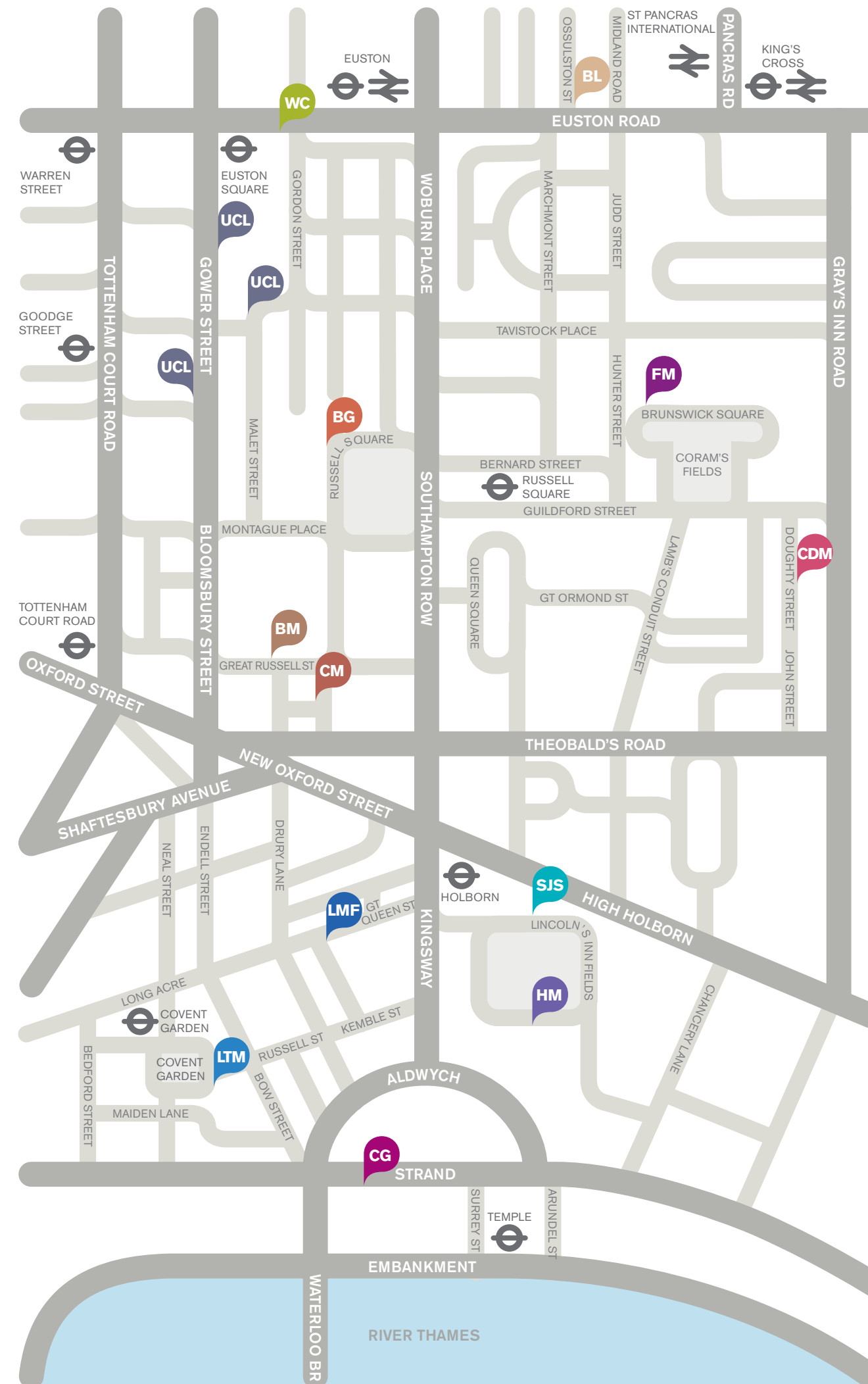
**THE LIBRARY AND MUSEUM OF FREEMASONRY**  
60 Great Queen Street  
WC2B 5AZ
- LTM

**LONDON TRANSPORT MUSEUM**  
Covent Garden Piazza  
WC2E 7BB
- SJS

**SIR JOHN SOANE'S MUSEUM**  
13 Lincoln's Inn Fields  
WC2A 3BP
- UCL

**UCL MUSEUMS: ART, GRANT, PETRIE**  
UCL, Gower Street WC1E 6BT
- WC

**WELLCOME COLLECTION**  
183 Euston Road  
NW1 2BE



## GETTING AROUND

**TUBE**  
Covent Garden, Euston, Euston Square, Goodge Street, Holborn, King's Cross St Pancras, Russell Square, Temple, Tottenham Court Road, Warren Street.

**RAIL**  
Euston, King's Cross, St Pancras International.

**BUS**  
59, 68, 91, 168 and 188 run along Museum Mile.

**CAR**  
Limited metered parking. National Car Parks at Holborn, Drury Lane, Russell Court and Brunswick Square.

**WALKING**  
The best way to discover Museum Mile is on foot. As a guide, it takes approximately 30 minutes to walk from Euston Road to the River Thames.

**CYCLING**  
There are cycle hire stations located throughout the area.

**ACCESS**  
Most of the museums listed have wheelchair access to part or all of their collections. Please contact the specific museums prior to your visit to ensure your needs are met.

## MUSEUM MILE WALKING TOUR

Walk the Museum Mile with Midtown's Walks Guide, Aly Mir. There are half-day and full-day options and all walks are free.

For full details, including dates and times visit [midtown.london/walks](http://midtown.london/walks)  
Advance booking is required and admission to the walk is by ticket only.  
Midtown is proud to support Museum Mile.

Use the interactive map at [museum-mile.org.uk](http://museum-mile.org.uk)



Please Note: Map is not to scale

Printed on recycled paper, made from 100% de-inked post-consumer waste.