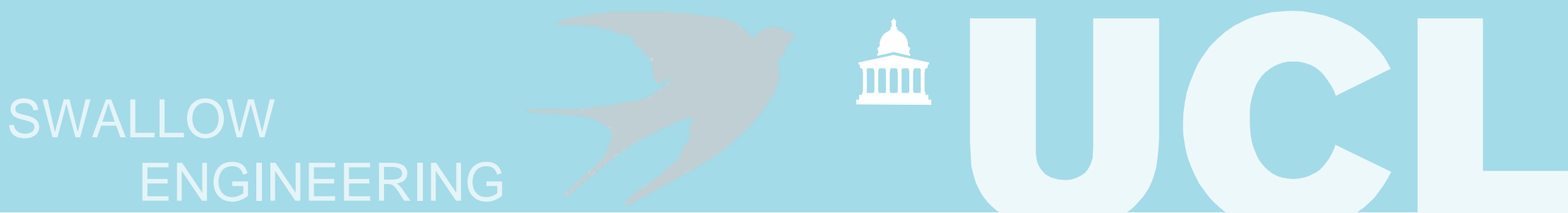


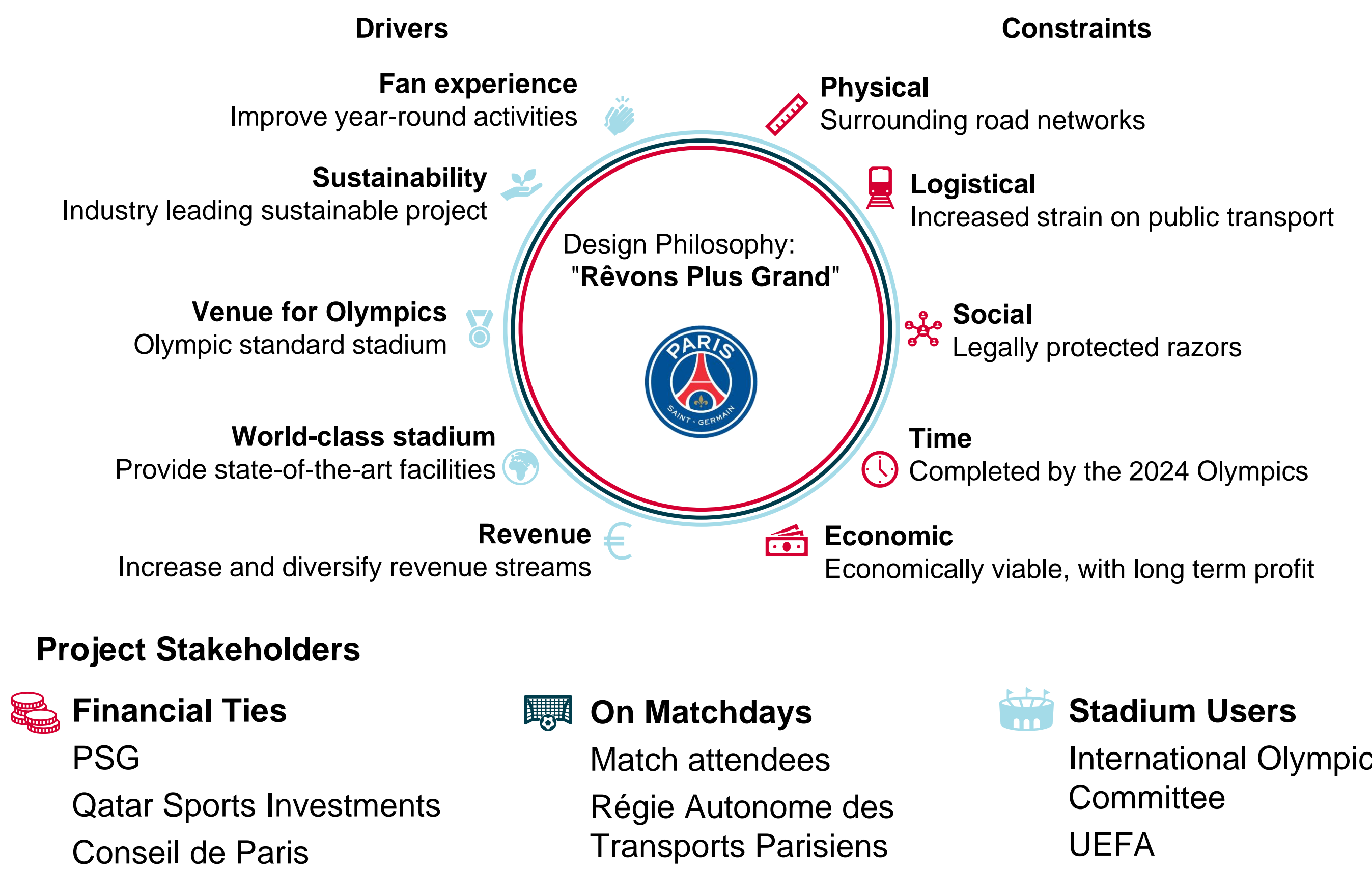
The Future of Parc des Princes

SWALLOW ENGINEERING



The Project

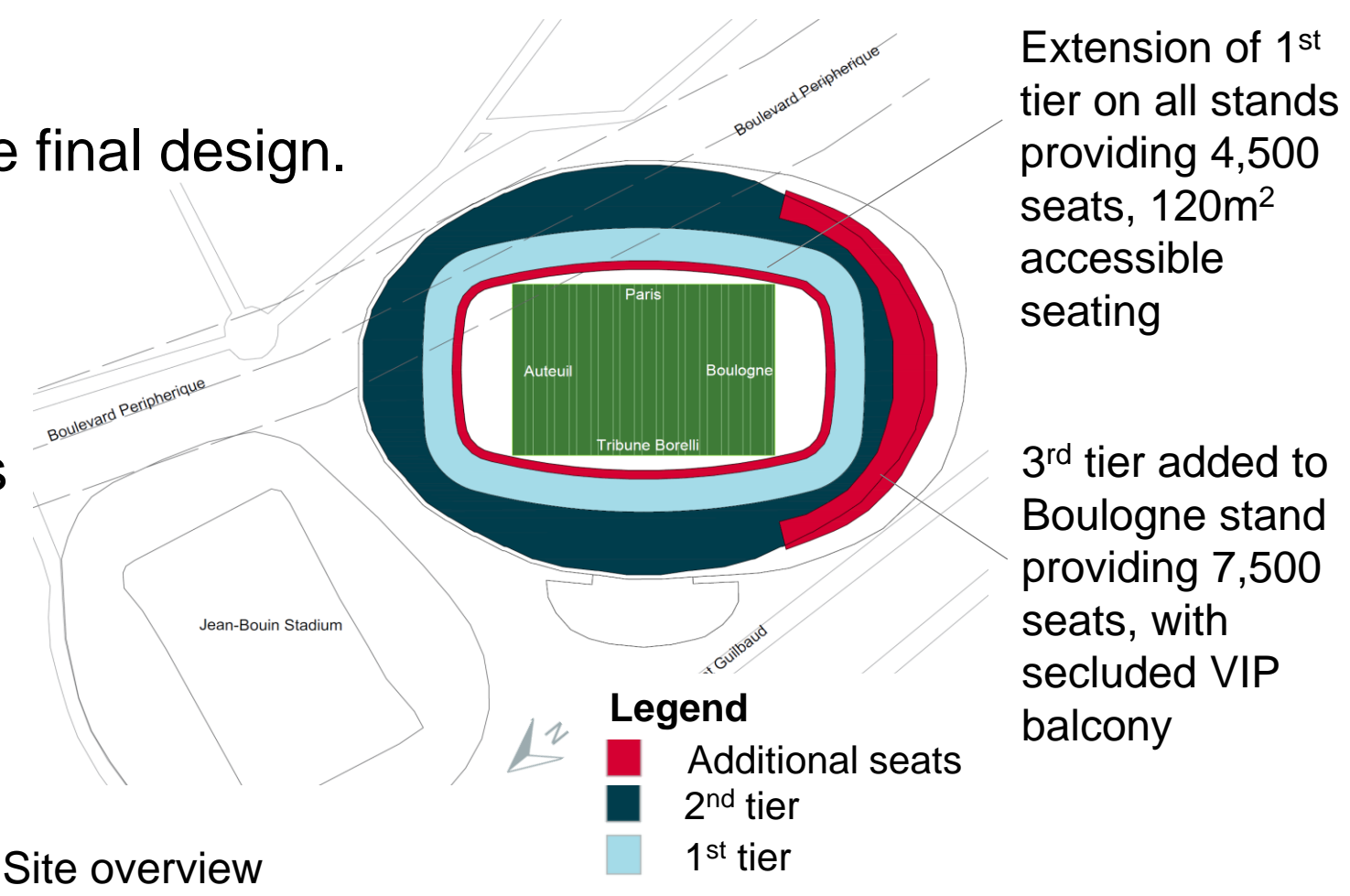
The Parc des Princes stadium, home to Paris Saint Germain (PSG), frequently exceeds 99% capacity. Due to high demand for tickets, the stadium will be undertaking an expansion to increase the seating to 60,000. Alongside the additional seating, a variety of hospitality and premium services will be included. Many drivers and constraints have been considered to produce a world class stadium, whilst ensuring the stadium maintains its architectural heritage.



Spatial Design

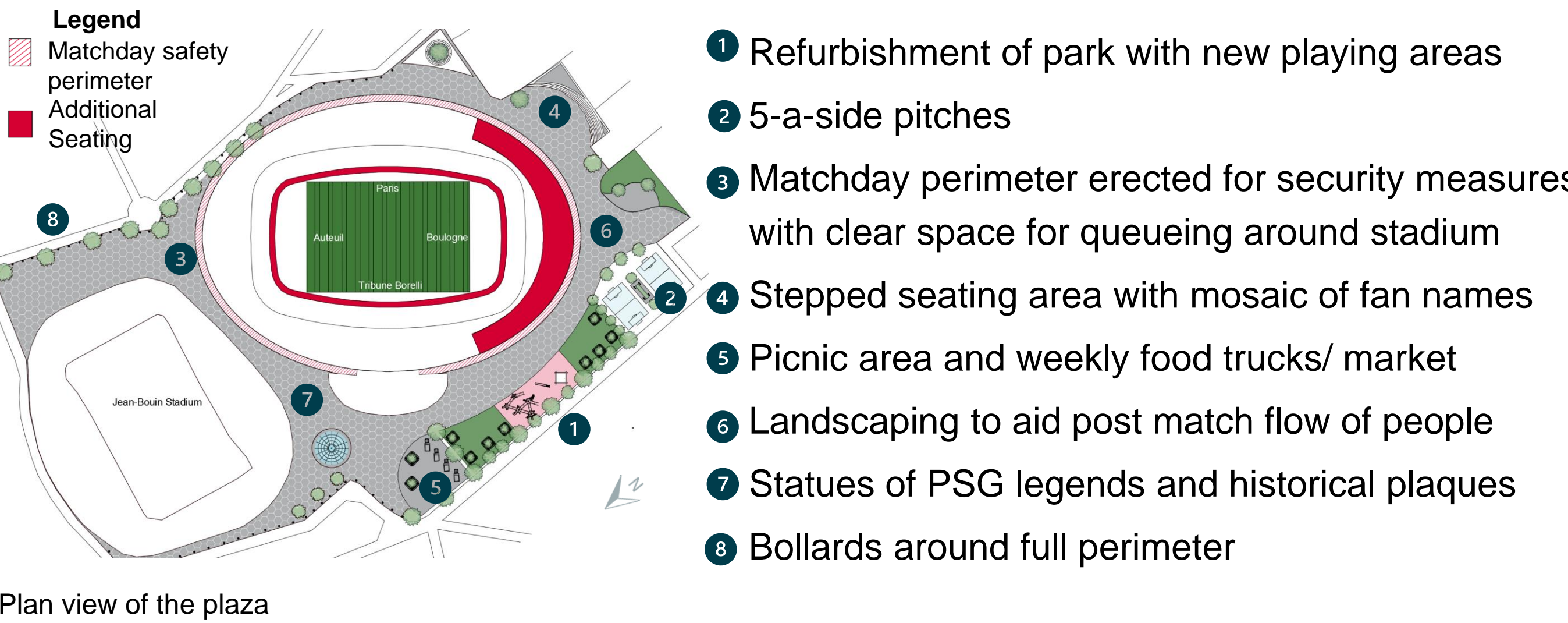
Strict site restrictions majorly influenced the final design.

- The Blvd Périphérique restricted any major works over the NE section
- Jean-Bouin stadium limited outwards expansion to the NW
- Future Parc des Princes uses space to the SE to expand both upwards and outwards



Plaza

With onsite football matches occurring only 30 days a year, the new stadium includes features to ensure its value all year round. The plaza will act as the interface between the stadium and the community and become a focal point for socialising, playing and eating.



Architectural Concept

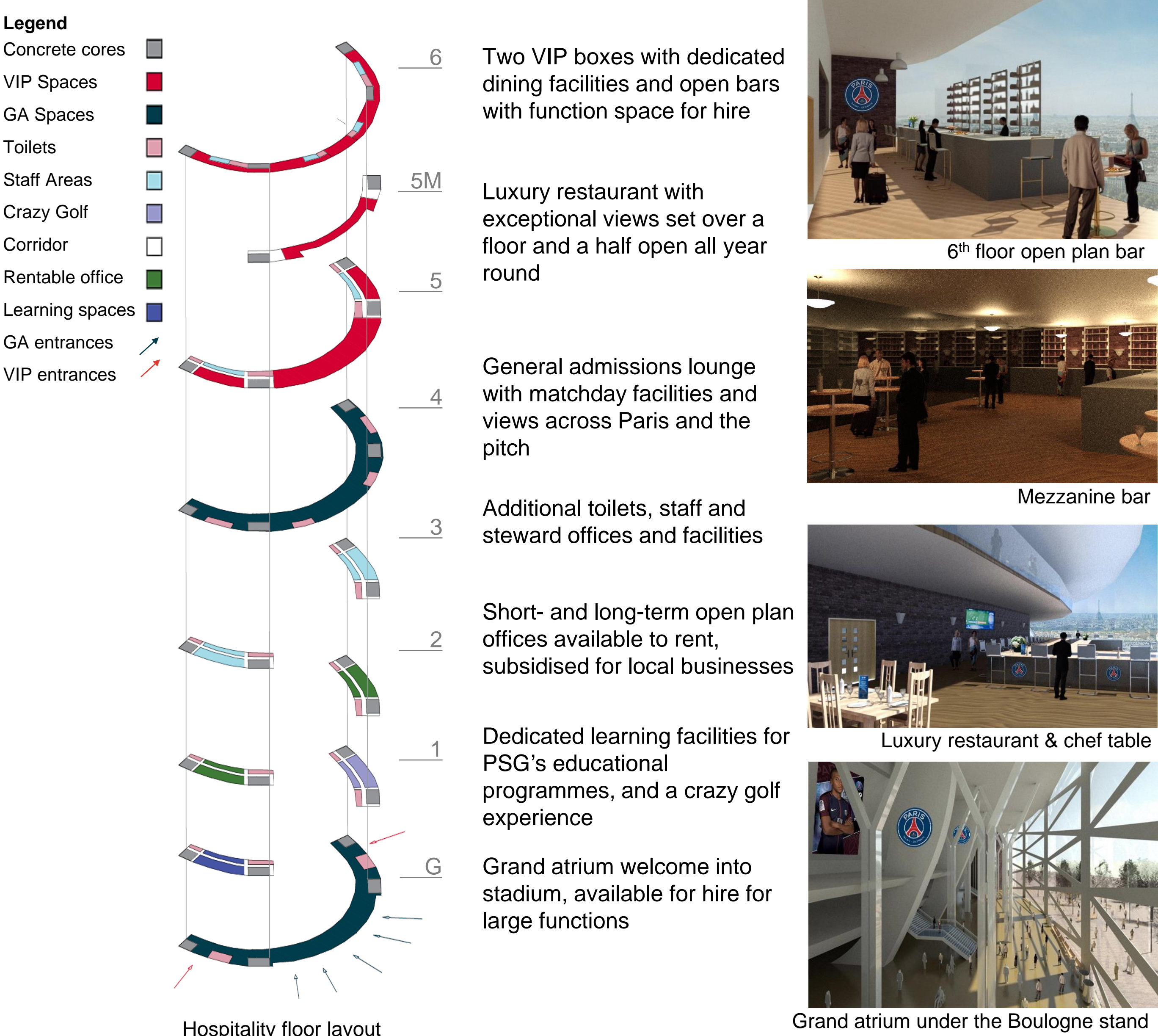
The extension to the Boulogne stand aims to modernise the stadium whilst respecting the existing structure. The glass façade exposes the skeletal structural elements and allows for the historic concrete razors to remain a visible key feature of the stadium from the outside.

The façade tapers into the existing stadium as it reaches the Paris and Tribune Borelli stands, providing a seamless transition from the old to the new.

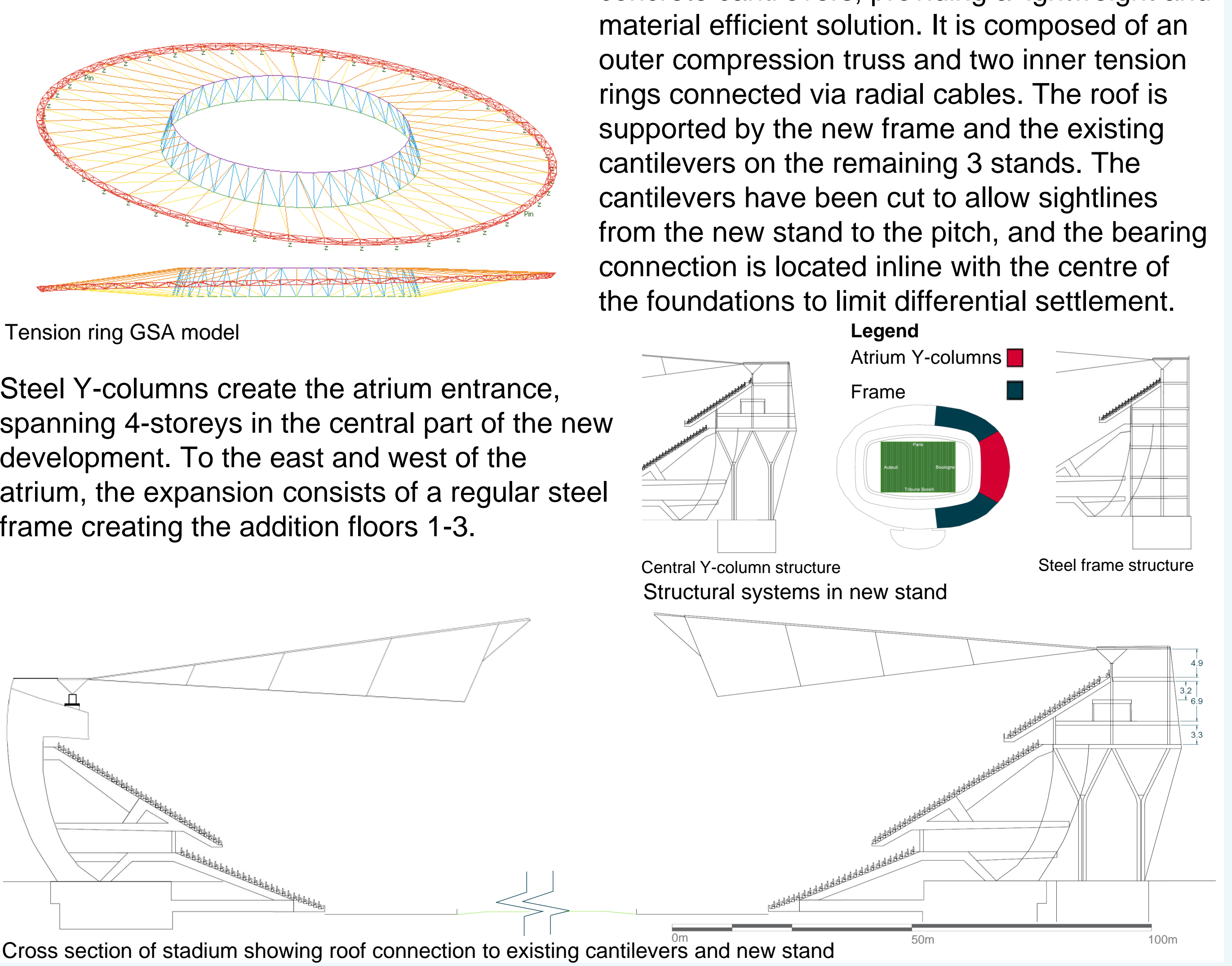


Hospitality

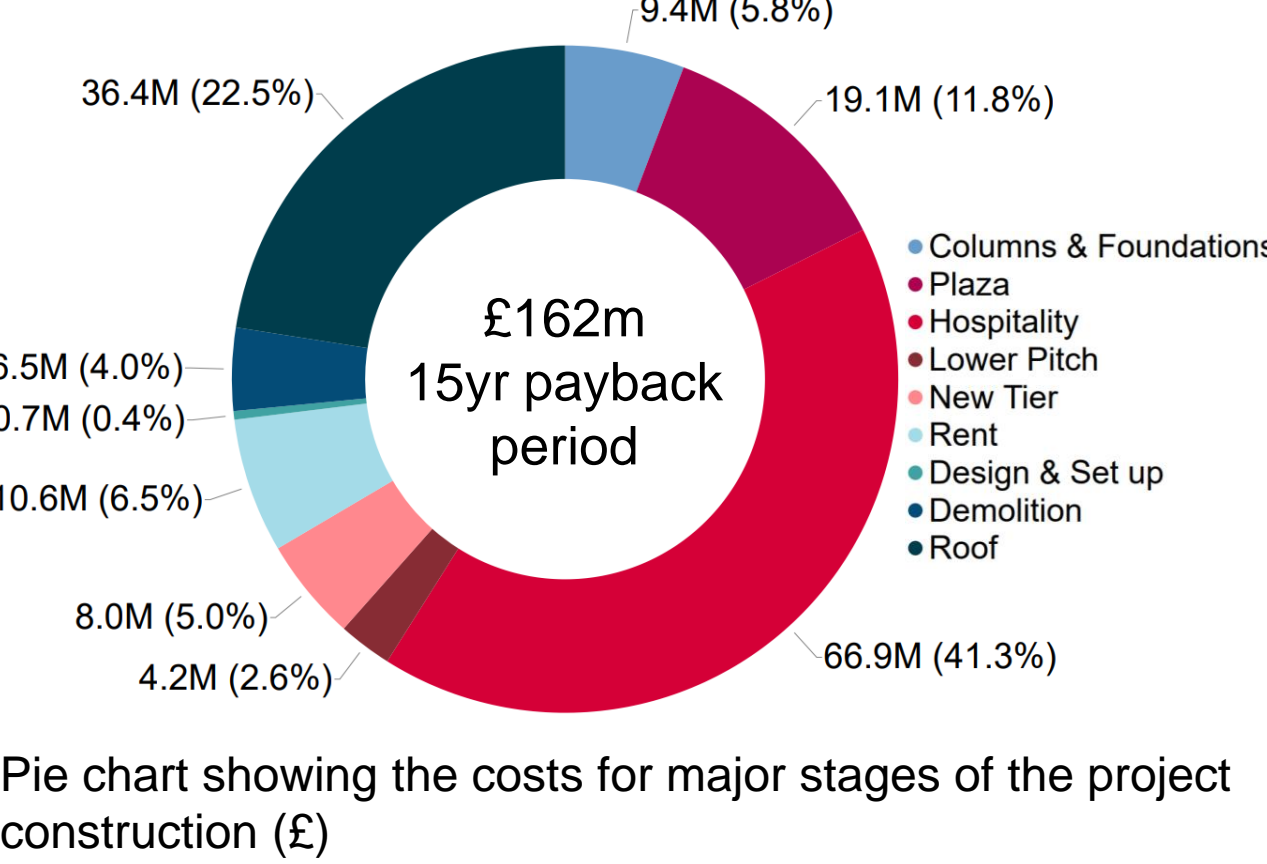
The modern stadium must do much more than simply provide a venue for football games, with trends leaning towards the luxury experience and facilities to be used all year round. The expansion of the Parc des Princes diversifies and expands the repertoire of experiences on offer, in a modern extension to the Boulogne stand set over 6 floors.



Roof and Structural Design



Project Finance



Timeline

Begin Site Set Up	Aug 2021
Demolition Works Begin	Nov 2021
First Construction On-Site	Jan 2022
New Tier Installed	Mar 2022
Hospitality Construction	Mar 2022
Roof Construction	Mar 2023
Completion of Construction	Jan 2024
Opening Day	Jun 2024

Sustainability

The stadium design was driven by 5 sustainability goals:

