

KEY FINDINGS: SEND PROFESSIONAL'S SURVEY

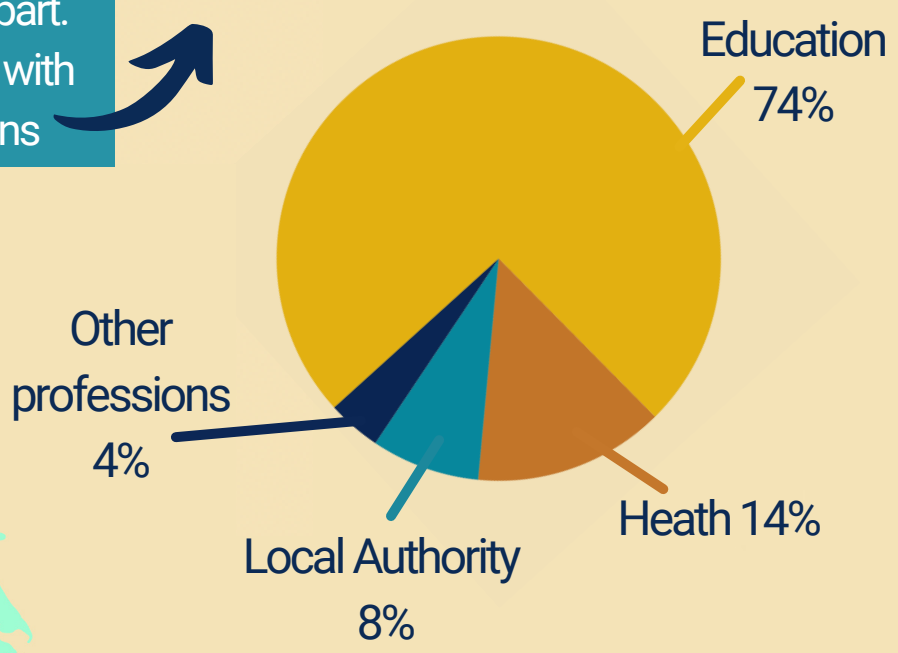
Health Outcomes for young People through Education



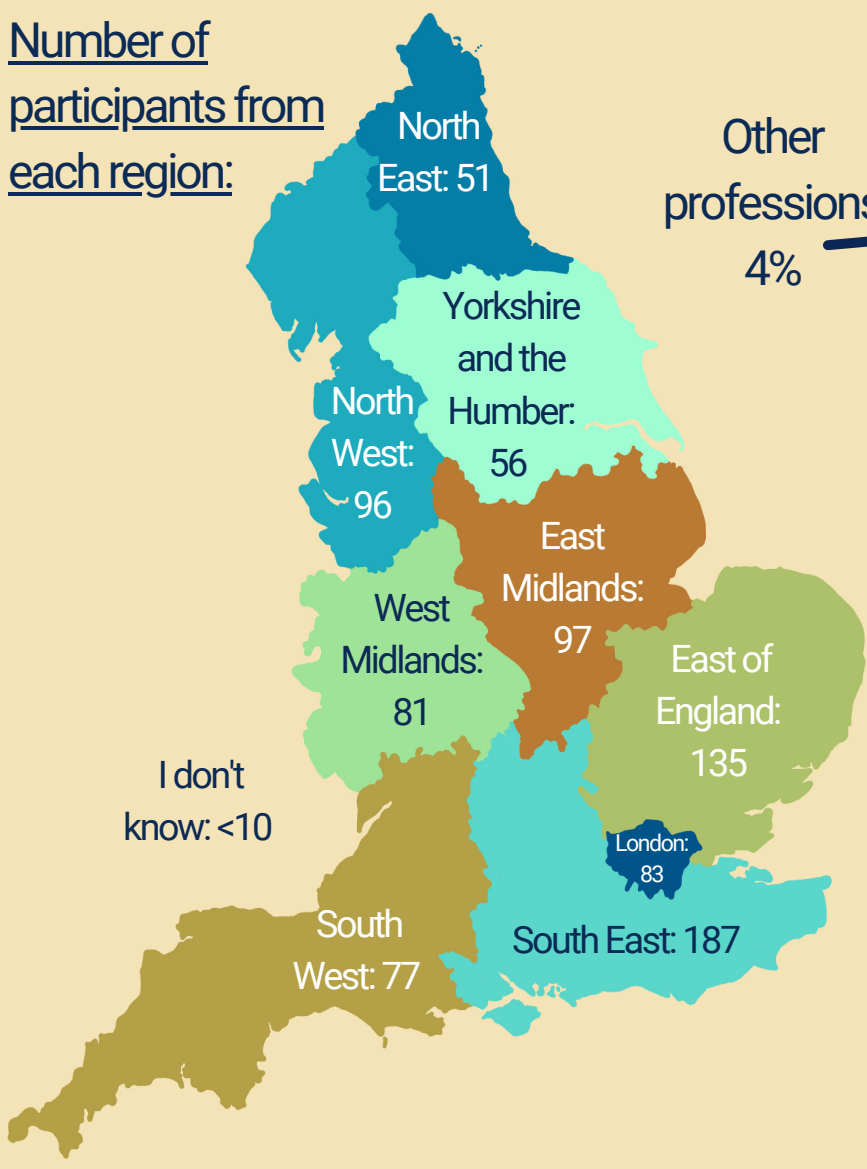
In July - October 2022, the HOPE Study launched three national surveys aimed at children and young people, parents and carers, and stakeholders to document how Special Educational Needs and Disability (SEND) identification and provision varies by Local Authority.

This flyer summarises the key findings from the 865 SEND professionals who took part. This sample consists of those working with SEND services in a variety of occupations

Occupation classification:



Number of participants from each region:



78% of SEND professionals agreed or strongly agreed that they have the appropriate training to identify Children and Young People who may have SEND

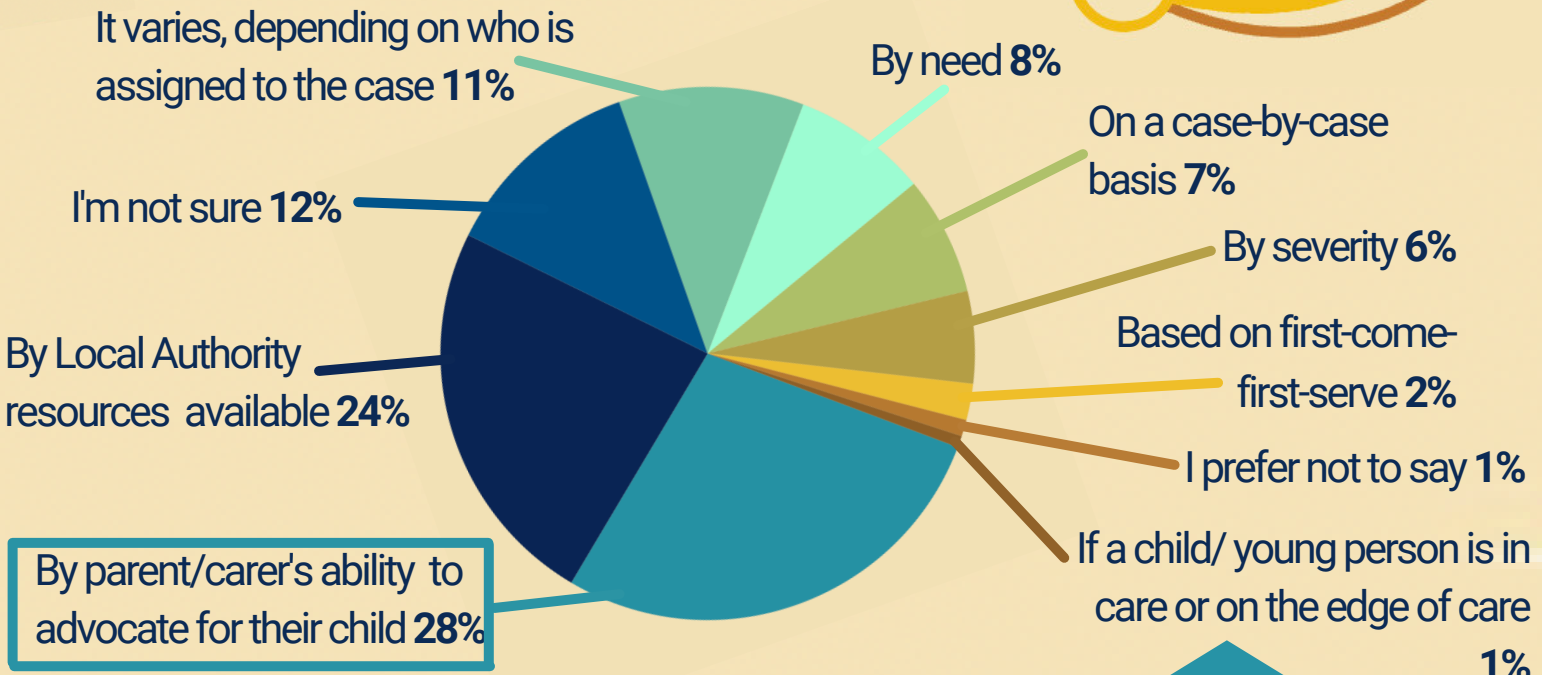
KEY FINDINGS:

SEND PROFESSIONALS SURVEY

Health Outcomes for young People through Education

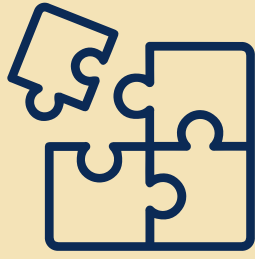


SEND professional's experience of what influences the allocation of resources for SEND in their Local Authority:



What are the main barriers to providing good quality SEND services for those who need them in your Local Authority?

1. Lack of Local Authority funding
2. Length of waiting lists
3. Insufficient access to SEND specialists
4. Excessive caseload
5. Lack of time



79% of SEND professionals agreed or strongly agreed that **they know where to signpost parents and carers following the first identification of SEND**

<p><u>Yes:</u> 83.1%</p>	<p><u>No:</u> 16.9%</p>	<p><u>Have you heard about the Local Offer for SEND?</u> (n=863)</p>
------------------------------	-----------------------------	--

KEY FINDINGS:

SEND PROFESSIONAL'S SURVEY

Health Outcomes for young People through Education

In your Local Authority, the agencies involved in SEND identification communicate effectively which each other about Children and Young people who may have SEND:

Agree or strongly agree: 38.1%

Disagree or strongly disagree: 42.2%

34% of SEND professionals **could neither agree nor disagree** that the assessment process for SEND adequately involves children and young people in the decision-making about their SEND assessment

48% of SEND professionals **disagreed or strongly disagreed** that the assessment process for SEND adequately supports parents and carers

44% of SEND professionals **disagreed or strongly disagreed** that their Local Authority is able to provide all the SEND services it is supposed to as part of the local offer

with a further **26.4%** not able to agree or disagree

Overall, how would you describe your experience of providing SEND services at each of the following stages?

Early identification stage

53% had **positive or very positive** overall experiences at this stage

Assessment stage

37% had **positive or very positive** overall experiences at this stage

Provision stage

47% had **positive or very positive** overall experiences at this stage

Overall, positive experiences were reported by the SEND professionals who took part. To keep updated with the HOPE study and to access the key findings flyers for parents & carers and SEND professionals, please see the links below to our HOPE website and our Twitter page!