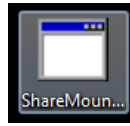
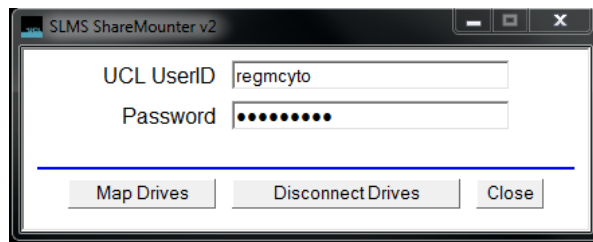


Transferring Data

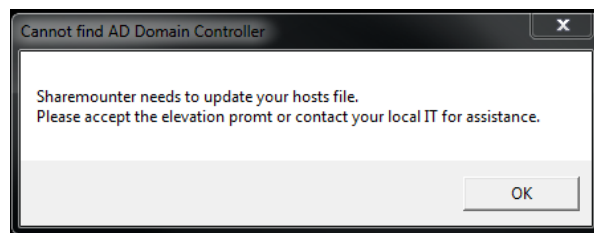
1. Open ShareMounter



2. Enter **UCL UserID** and **Password**
3. Click '**Map Drives**'



4. Click 'OK'



5. You now have access to your Home (N:) drive to transfer data

You should also have access to 'Microscopy Core' drive which you can use to transfer large datasets

S:\Cancer\Microscopy Core

6. **IMPORTANT:** Once finished, open ShareMounter and select '**Disconnect Drives**'. Otherwise the next user will have access to your Home (N:) drive.

