

Startup Guide for LSM880 with Airyscan

Please note: This guide is for reference only and **DOES NOT** replace training on the instrument. If you are unsure in the operation of this instrument please contact Jiten Manji.

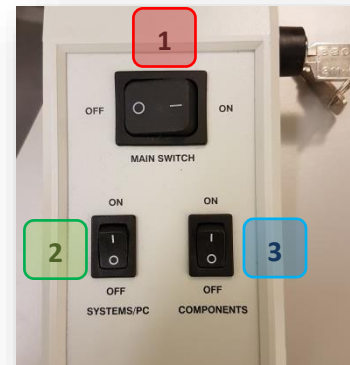
Startup

If you are the first user or if the system is off when you arrive, please follow this guide to start the instrument.

- Please check there is no damage to the equipment before use.
Any damage must be reported to Jiten Manji or Sonia Buckingham immediately and the instrument should **NOT** be used.

- Switch on the power switches in the following order:
 - 1) Main power switch ----->
 - 2) System/PC switch ----->
 - 3) Component switch ----->

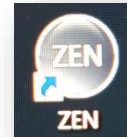
Fig.1



- Turn the power switch on the main PC and log into Windows

- Turn on the Zen Black software from the desktop (**Fig.2**)

Fig.2



- As the software loads, you will see this prompt (**Fig.3**):

Fig.3

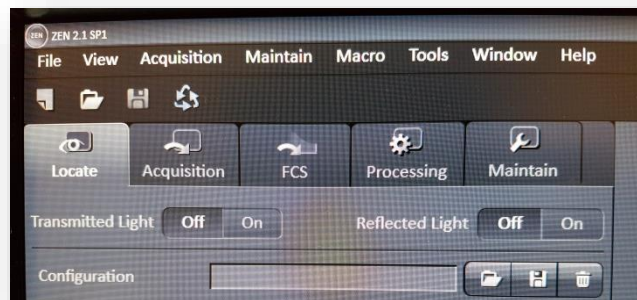
- **NB:** If there are any error when initialising the system, they will show up in the 'boot status' menu. Please take an image of any (if any) error messages.

- Please navigate between 'Confocal' and 'Widefield' modes using the 'Acquisition' and 'Locate' tabs respectively (**Fig.4**)

Fig.4

Locate for Widefield mode

Acquisition for Confocal mode



Please contact Jiten Manji in the first instance for any issues with the system

j.manji@ucl.ac.uk ::: Lab 103