



Technical Specifications

Rev 1, May 2022

Table of Contents	
Introduction/ Postal Address/Key Contacts	1
Technical Specifications (both Spaces)	
Arrival and Load In/ Delivery Address/ Getting to the Bloomsbury	2
Loading and Parking/ Opening Hours /Dressing Rooms	3
Laundry/ Filming/ Special Effects/Security and Stage Door	4
Bloomsbury Theatre	
Configuration	5
Stage dimensions/ Stage elevators/ Theatre stage/ Stage management	6
Power/ Lighting equipment	7
Sound equipment/ Audio Visual/ Rigging	8
Access Equipment/ Piano/ Orchestra seating and stands/ Drapes	9
Bloomsbury Studio	
Configuration/ Stage Dimensions/ Studio Theatre Stage/ Stage Management/ Power	10
Lighting Equipment/ Sound Equipment/ Audio Visual/ Access Equipment/ Piano	11

Introduction	
<p>The Bloomsbury Theatre and Studio are located on Gordon Street, Euston. The Bloomsbury Theatre is a 541 seat Proscenium arch theatre. Designed by Fello Atkinson, the Theatre opened in 1968 as the “Central Collegiate Building Auditorium, it was renamed the Bloomsbury Theatre in 1982. It was resealed in 1987 and 2014 to improve sightlines and extensively refurbished in 2018. The Studio was added in 2015 and is a flexible black box space seating up to 70. The Bloomsbury Theatre and Studio are part of UCL Culture, who manage theatres, museums and collections, public art and engagement at University College London.</p>	
Postal Address	
<p>The Bloomsbury Theatre and Studio 15 Gordon Street London WC1H 0AH</p>	
Key Contacts	
General enquiries:	theatre@ucl.ac.uk 02076792777
Technical enquiries:	theatre.technical@ucl.ac.uk 02076791361
Box Office enquiries:	ticketing@ucl.ac.uk 02031081000

Technical Specifications (both spaces)

Arrival and Load In

Access to the Bloomsbury Theatre is either via a goods lift from the Physics Yard vehicle bay or through the front doors of the building on Gordon Street.

Access to the Theatre stage via the goods lift is step-free. Access through the front doors is via stairs using temporary ramps, through the auditorium, and onto the stage using the forestage elevators.

Access to the Studio Theatre is either via the front door and down one flight of stairs, or step free via the physics yard vehicle bay.

Goods lift car is 3000 long with a maximum load of 3000kg

Get-in via Gordon Street front doors: maximum clearance through doors on the route is 2010 H x 1070 W.

Get-in via the goods lift: maximum clearance through doors on the route is 2000 H x 1290 W.

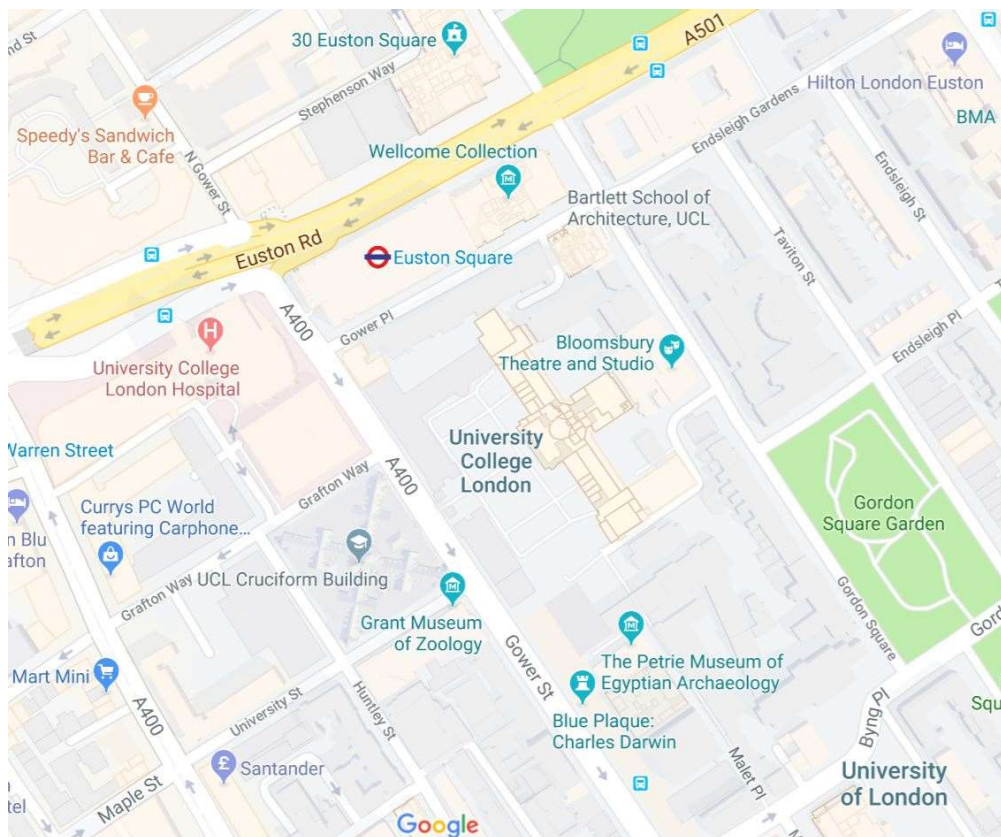
Delivery Address

Deliveries requiring use of the goods lift should use the following address:

UCL Physics Yard
Off Gower Place
London
WC1E 6BN

Deliveries via the front doors of the Theatre should use the main Gordon St postal address above.

Getting to the Bloomsbury



Loading and Parking

There is no free parking in the vicinity of the venue before 6:30pm Monday to Saturday.

Loading or unloading from any articulated vehicles will be on Gordon Street. A parking suspension from Camden council will be required to ensure clear access to the building frontage. All loading is at street level (ramp or tail lift required for larger vehicles/equipment). Alternative loading unloading may be carried out from the Wilkins Terrace yard which is accessed from Gordon Place.

Please note that due to height restrictions and narrow turning circles vehicles larger than a Luton van may not be able to back up to the goods lift in the Wilkins Terrace yard. Vehicles larger than 7.5T will not be able to access the Wilkins Terrace yard. To use the Wilkins Terrace yard, vehicle details and their timing will need to be provided 5 working days in advance so that this can be booked with UCL Security.

Opening Hours

The Bloomsbury Theatre building is usually open:

09:00 – 23:00 Monday to Saturday

09:00 – 19:00 Sunday (or as required by the needs of the hirer)

We also open when we have shows outside of these hours. If you need to work outside of the above hours and this hasn't been listed in your contract then there maybe additional costs, please speak to the theatre team in advance of your arrival.

Dressing Rooms

The Bloomsbury Theatre has 6 dressing rooms and a Greenroom. Access to the dressing rooms is via stage right.

All dressing rooms are equipped with costume/clothing rails, lit mirrors, show relay and paging speakers.

Dressing Rooms 1 and 2 are the Principals' dressing rooms, with an ensuite shower and WC in each room. They are located on the mezzanine level below stage and will comfortably accommodate 4 people.

Dressing Rooms 3, 4 and 5 are located on the floor below stage at basement level. These dressing rooms are served by separate WCs off the same corridor.

Dressing Room 3 will comfortably accommodate 8 people and has a single shower.

Dressing Room 4 will comfortably accommodate 14 people and has two showers.

Dressing Room 5 will comfortably accommodate 8 people.

Dressing Room 6 is fully accessible and is at stage level, in the workshop area adjacent to stage right. It has an ensuite WC and shower.

The Green room has fridge, tea and coffee making facilities and will comfortably seat 12 people.

The Bloomsbury Studio has a single dressing room, which will accommodate a maximum of 6 people. Access to the Studio dressing room is not step free. The studio dressing room is served by the same backstage WCs as Theatre Dressing Rooms 3 – 5.

The Theatre backstage capacity is limited to 80 people (90 if the full Orchestra Pit is in use). This includes staff, cast, technical crew, chaperones etc.

Laundry

The Bloomsbury Theatre has a small costume running room and laundry. This space is equipped with butler sink, twintub washer, washing machine, condenser tumble drier, iron/ironing board and sewing machine.

Filming

Filming in the performance spaces for commercial release or broadcast will involve additional costs, please speak to a member of the theatre team about this before your arrival. The Bloomsbury theatre has an SDI video infrastructure, and there are cable passes throughout.

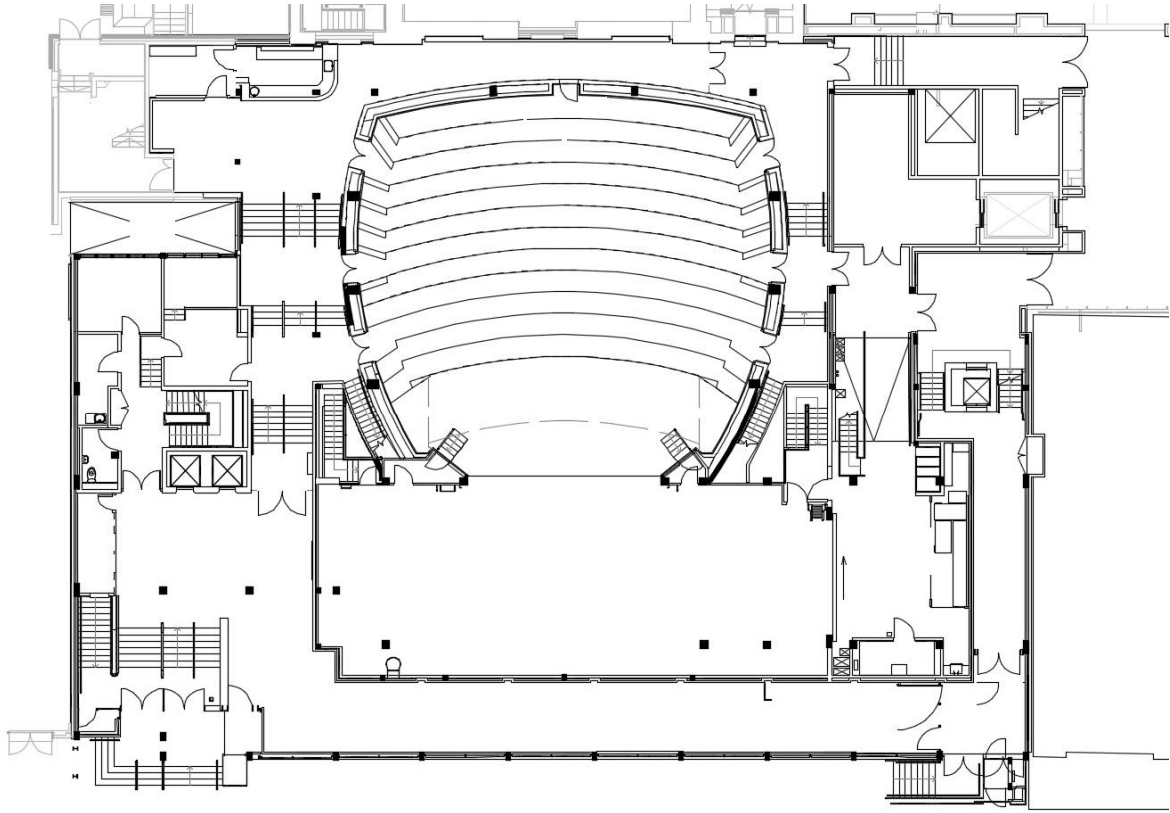
Special Effects

It is a requirement of our Premises Licence that all special effects are notified in writing at least 10 days in advance to Camden Council to obtain their consent by the issue of a waiver. Examples of effects include, but are not limited to, the use of dry ice machines, cryogenic fogs, smoke machines, fog generators, pyrotechnics, fireworks and other gas propelled effects, real flame, firearms, motor vehicles, strobe lighting and lasers.

Security and Stage Door

Stage door for the Bloomsbury Theatre and Studio is located at the rear of theatre at basement level. It is reached via the Foyer. Access to backstage and the dressing rooms will be via the stage door, where you will be required to sign in. On leaving the building, please exit via the stage door and ensure you have signed out, this is in order that we have an accurate register of building users in the event of an evacuation.

Bloomsbury Theatre



Configuration

The theatre is an end on proscenium arch theatre seated in the continental style with a curved, nearly circular, balcony. There is a permanent control position at the rear of the stalls and a follow spot room at the rear of the circle seating. There are two forestage elevators to allow for a stage apron, and/or orchestra pit. The standard configuration is Forestage Elevator 1 at stage height, and Forestage Elevator 2 at auditorium level. The fly floor is on stage left, with a small workshop and scene dock behind a large sliding door stage right. There is no mezzanine level opposite the fly floor, please note this makes brailing of flying bars very challenging. If drapery, set pieces or lx practicals (etc.) fly during performances it is strongly suggested that the bars adjacent are gridded.

Stage Dimensions	
Stage Width	
Wall to wall	24240mm
Stage left wing	7030mm
Stage right wing	8078mm
Proscenium	
Width	9130mm
Height	7235mm
Stage Depth	
Upstage wall to portal edge	9350 mm
Upstage wall to stage edge with apron (elevator one at stage height)	11910mm
Roof Heights	
Stage floor to top flying dead	18000mm
Stage floor to underside flying gallery stage left	6750mm
Stage floor to underside stage right and upstage	7010mm
Maximum flying width	11500mm
Forestage Elevators	
<p>There are two forestage elevators. Elevator One (depth 2565mm) forms the stage apron and is double stacked, allowing for a forestage with orchestra pit. Elevator Two (depth 3085mm) houses the first two rows of auditorium seating, which can be removed to allow for a larger orchestra pit when lowered. Access to the orchestra pit is via the backstage corridor, with emergency exit stairs to the auditorium. The forestage elevators are not to be moved whilst occupied by personnel.</p>	
Theatre Stage	
<p>Black painted stage floor, painted with Flints black stage paint and glazed. The floor is semi-sprung, with the exception of the forestage elevators.</p> <p>The theatre has a selection of steel deck rostra, including 2440 x 1220, 1220 x 1220, stairs, handrails and with a selection of legs of a variety of heights.</p> <p>The theatre has a supply of stage braces, French braces and stage weights. There is sufficient Harlequin black/grey reversible dance floor to cover the playing space.</p> <p>The theatre has no.6 tank traps with a selection of boom arms.</p>	
Stage Management	
<p>The theatre has two wired comms rings, A and B, with comms sockets distributed on AVB panels around the space. The theatre has no.10 dual channel ClearCom RS703 belt packs, with single muff headsets. The theatre is equipped with a GDS IP based Cuelight system which will support up to no.24 cue lights. Cue light points are distributed on AVB panels around the space.</p> <p>The theatre has video and audio show relay systems, as well as the facility to make zoned backstage and front of house calls.</p> <p>The theatre has a moveable prompt desk, equipped with clock, timer, show relay monitors and variable lighting. There is a zoned paging system via the comms system, and a 24-way Cue light controller. There is a two channel main station for comms. Generally, the SM desk is normally located stage right.</p>	

Power

Double gang, locally RCD protected 13amp sockets are distributed throughout the space on both AVB and SLB panels.

32amp and 16amp locally RCD protected sockets are available in several locations throughout the space.

110v site power is available in the workshop and onstage.

Onstage, there is a 400A TPN supply with 250A TPNE Powerlock connectors, local RCD protection with variable trip setting, metering and a number of locally sub-fused outlets on 32A, 63A and 125A ceeform.

Lighting equipment

Intelligent Lighting

no.14	ETC Source 4 Series 2 Lustr	no.8	26° EDLT lens LED Profile
		no.8	Fresnel lens adapter
		no.12	Cyc adapter

no.10	Martin MAC Aura XB
no.6	Martin MAC Encore Performance CLD

Generic Lighting

no.10	ETC Source 4	19° 575W Profile
no. 10	ETC Source 4	36° 575W Profile
no.12	ETC Source 4 Zoom	25/50° 575W Profile
no.20	ETC Source 4 Zoom	15/30° 575W Profile
no.12	Alto	2kW Fresnel
no.24	Cantata F	1kW Fresnel
no.8	Selecon Rama	1.2kW Fresnel
no.6	Selecon Acclaim	650W Fresnel
no.40	Parcan	CP60, CP61, CP62 available
no.6	Short nose Parcan	CP60, CP61, CP62 available
no.8	ETC Source 4 PAR	WFL, MFL, NSP, VNSP lenses available
no.12	12v Birdies	50W 24°
no.6	Selecon Lui 4-cell cyc batten	1kW per cell

Followspots

no.2	RJ Topaze	1.2 kW 7/14.5° Followspot
------	-----------	---------------------------

Top hats, gobo holders and irises available.

The theatre has a small selection of gobos, but please check stock with us in advance.

Control

ETC Gio with 2 x 20 fader wing

no.216	dimmer/relay ways at 10A	(ETC Sensor3 dimmers)
--------	--------------------------	-----------------------

no.14	dimmer/relay ways at 25A	(ETC Sensor3 dimmers)
-------	--------------------------	-----------------------

DMX and Ethernet (Cat6) networks

Sound equipment

The Bloomsbury Theatre PA is an EM Acoustics Halo Compact system. The standard configuration is based around an LCR set up, with Left and Right stalls suspended no.3 arrayed Halo-C elements and ground no.1 EMS-118 Subwoofer per side, with a centre hang of no.7 arrayed Halo-C elements. Front fills consist of no.4 EMS-61 point source speakers. There are Left and Right EMS-129 speakers. Balcony fills are provided by no.2 EMS-81X point source speakers.

Onstage foldback/monitoring consists of no.6 EM Acoustics M10 wedges.

Amplification is provided by Lab Gruppen FP amplifiers.
Control processing and system tuning is managed by a QSC Q-SYS Core processor.

The sound desk is a Digico SD9T with one SD-MiNi Rack and one D-Rack. There are 64 inputs and 24 outputs. There is capacity for up to 96 inputs if used with an additional D-Rack. This would need to be an external hire.

CD playback and Qlab are available

The Bloomsbury Theatre does not have a Spotify account and is not able to stream music on shows/events.

- no.4 Sennheiser EW512-G3 Lavalier Radio microphones
- no.4 Sennheiser EW500-935-G3 Handheld radio microphone

A good stock of active DI boxes and dynamic and condenser microphones, stands and cable are available.
Please check current stock with us in advance.

Audio-Visual

Draper stagescreen™ (max viewing surface 9.15m wide x 5.15m high). Front and rear screens are available. The screen is normally flown in the grid and rigged with the rear surface. Swapping to the front surface requires the screen to be derigged which takes a couple of hours.

- no.1 Panasonic PT-RZ21K (20,000 lumen 3 chip laser) with: ET-D75LE50 0.7:1 fixed focus lens
ET-D75LE20 1.7-2.4:1 zoom lens

Unfortunately, the theatre is not setup as a cinema – we do not have surround sound.
Our projector is not a cinema projector and cannot screen Digital Cinema Package (DCP) film content.

BluRay and DVD playback
Qlab is available for content playback

The theatre is equipped with multimode fibre and BNC SDI infrastructure.

Rigging

The theatre has a counterweight fly system, comprising of no.25 fly bars, all 11m in length and extensions. There are no.2 manual winch bars (Bar 26 and Bar 27) at the rear of the stage. There are no.2 motorised advance bars over the first forestage elevator.

Bar 1 is a double purchase counterweight bar for the house border. Bar 2 is a single purchase bar for the house tabs. Both bars 1 and 2 can be operated at stage level or from the fly floor.
Bars 3 through 25 are double purchase bars and are operated from the fly floor.

Bars 1 and 3 through 25, and both motorised bars have a maximum SWL of 200kG, with a UDL of 60kG per linear meter and a maximum point load of 100kG.

Bar 2 has a maximum SWL of 150kg with a UDL of 60kG per linear meter and a maximum point load of 100kG.

Front of house lighting bars are also located on the walkways in the gantries, around the balcony fascia, and on the underside of the circle slip seating areas. All FOH lighting positions have an SWL of 45kg per linear meter.

There are three 750kG rated strong beams downstage of the proscenium arch for the installation of PA. The centre point is used for the house PA.

The grid is not rated and we cannot rig any temporary suspension points from it (such as for motors).

Access Equipment

The theatre has an AAP model 50518 Tallescope, with a maximum platform height of 5.9m (maximum working height 7.9m) with a maximum platform load of 115kg. The Tallescope is fitted with an AAP rescue winch.

The theatre has selection of ladders, including no.1 fourteen rung and no.1 twelve rung Zarges three part combination A-Frame ladders.

Piano

The Theatre does not have a piano for use in the theatre, but one may be organised and hired from a local supplier with notice. The cost of hire and the tuning will be chargeable.

Orchestra Seating and Stands

no.35 lightweight stackable chairs.

no.20 lit RAT stands, no.1 lit RAT conductor's stand, all with IEC connectors.

Drapes

Black wool serge

no.1 Full Black 11m wide x 8m drop

no.2 Split Blacks 6m wide x 7.2m drop

no.3 Border 12m wide x 3m drop (one used as house border)

no.1 Border 12m wide x 2.4m drop

no.1 Border 12m wide x 1.5m drop

no.4 pairs Legs 2.4m wide x 7.2m drop

no.1 pair Legs 1.85m wide x 8.5m drop

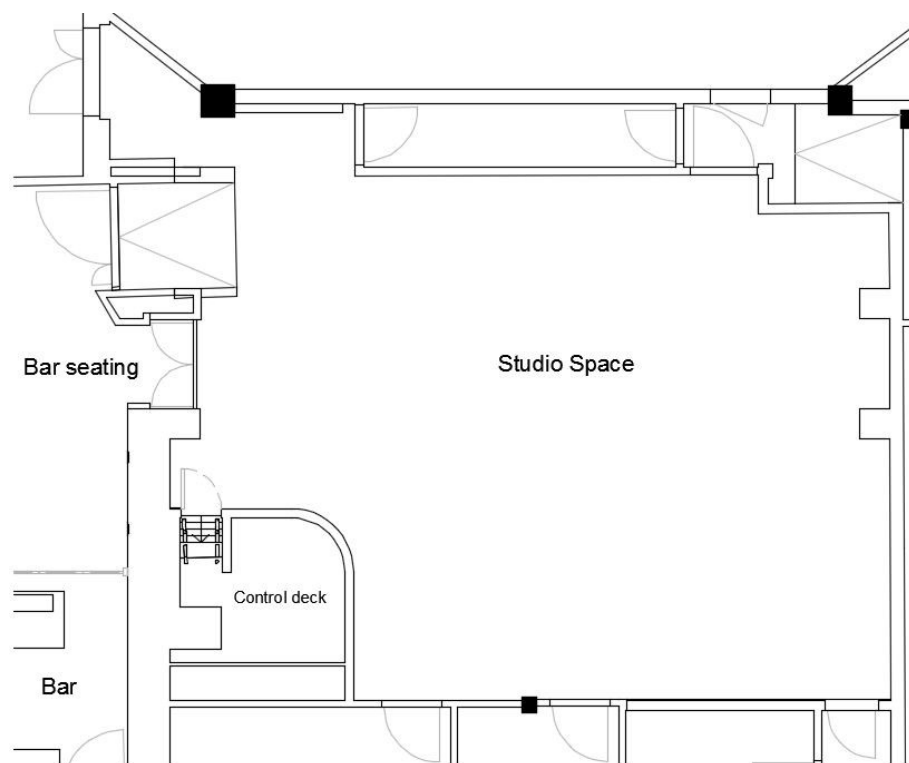
There is up/down side masking Stage Left and Stage Right on a fixed track

Other

no.1 White Cyc 12m wide x 8.5m drop

no.1 Black sharks tooth gauze 12m wide x 8.5m drop

Bloomsbury Studio



Configuration

The Bloomsbury studio is a multi-use, black box studio space suitable for all forms of production. There is a triple-E curtain track around the perimeter of the space (excluding the control position) with full length black serge masking. There is a permanent raised control position accessed by a fixed ladder. The SR wall (when working 'end on') has full length mirrors, allowing for dance rehearsals.

Stage Dimensions

The Bloomsbury studio is a roughly rectangular space, approximately 10000mm by 8000mm wall to wall. The serge masking reduces the usable floor space. The available playing space varies depending on seating configurations, generally permitting a 6000mm by 4500mm playing space without reducing capacity.

Maximum usable height (floor to lighting grid) is 3200mm

Studio Theatre Stage

The studio theatre floor is sprung with black dance floor permanently installed.

Stage Management

A wired Altair comms system is available in the Studio Theatre.

Power

13amp sockets are distributed around the perimeter of the space.

Lighting Equipment

no.12 Robert Juliat 535ww LED 75w Tibo fresnels.

no.7 Robert Juliat 533ww LED 75w 30/40deg profile spots.

no.6 Martin Mac Aura moving head wash lights

no.5 Phillips Selecon PL-CYC Mk1

Control

ETC Ion Xe with 40 x fader wing

44 ways 2.3Kw ETC Smartpack hardwired dimmers (switchable dimmer or relay).

Sound Equipment

no.4 EM acoustics EMS-81x full range point source speakers

no.2 EM acoustics EMS-112 subwoofer speakers

Control

Roland M400 Digital Mixing console

London Blue Soundweb system controller

Audio Visual

A ceiling mounted Epsom G6550WU 6000 lumen projector with short throw lens is available.

no.2 motorised drop-down projector screens.

The projector can take VGA or HDMI inputs (HDMI only at the tech desk). Please note, there is no switcher.

Qlab and Blu-ray playback is available.

Access Equipment

The studio theatre has a selection of ladders.

Piano

The studio has an Upright Piano, the tuning of which will involve additional costs, please speak to a member of the theatre team about this before your arrival.