

Conservancies and tipping points in East African drylands

Jan de Leeuw and Mohamed Said

Community based conservancies

- Areas of land managed
 - For conservation run by communities
 - Revenue from conservation / tourism
- Database
 - ILRI database Kenyan community conservancies
- Status
 - 43 conservancies in Kenya
 - 0.9 million ha; ~ 2% of ASAL area

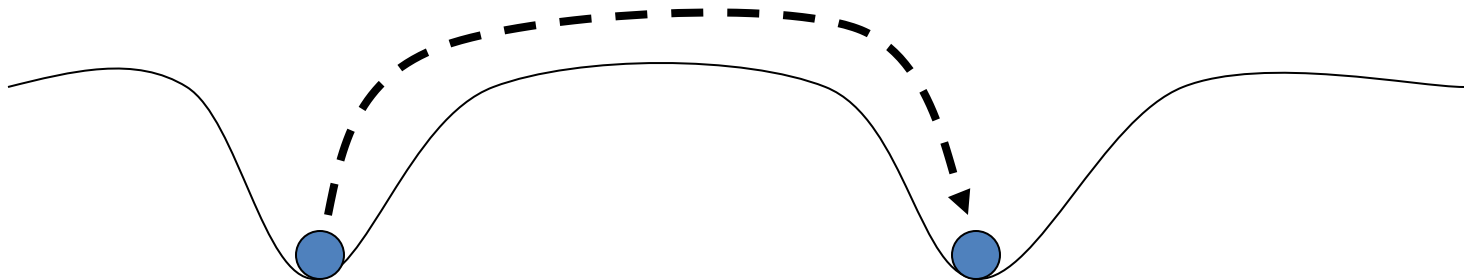
Changes in pastoral land

Land tenure change

Communal lands ----- Privatized lands

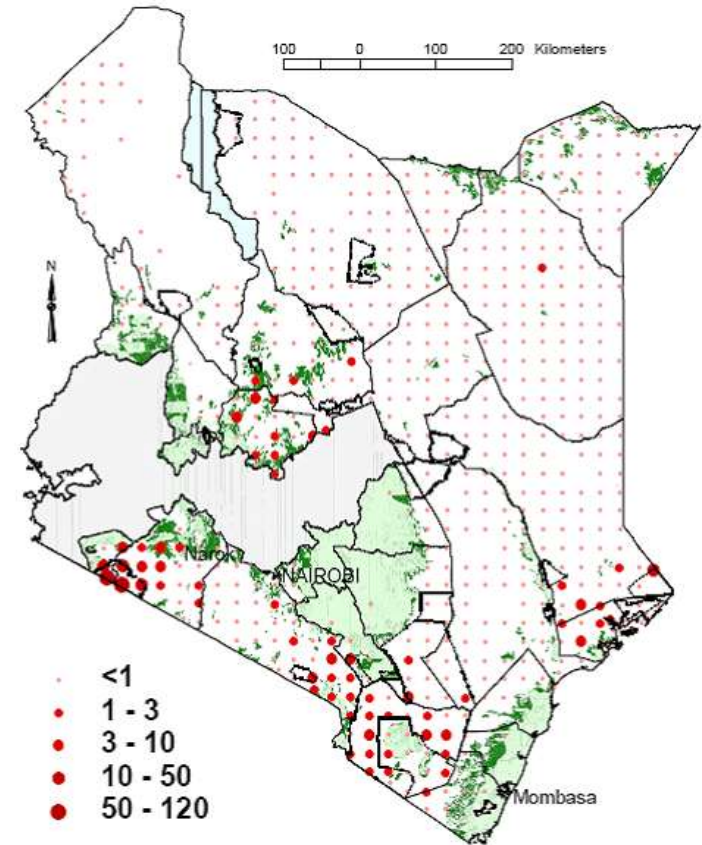
- **Open access**
 - Allowing mobility
- **Benefits livestock keepers**
 - Livestock resilient drought
 - Potential income wildlife

- **Closed**
 - Mobility constrained
- **Problems livestock keepers**
 - Increased vulnerability
 - Loss environ benefits



Wildlife and crop encroachment

- Competing claim from cropping
- Cropping more profitable than wildlife payments
- Dark green- Cropland increase 1980 to 2000

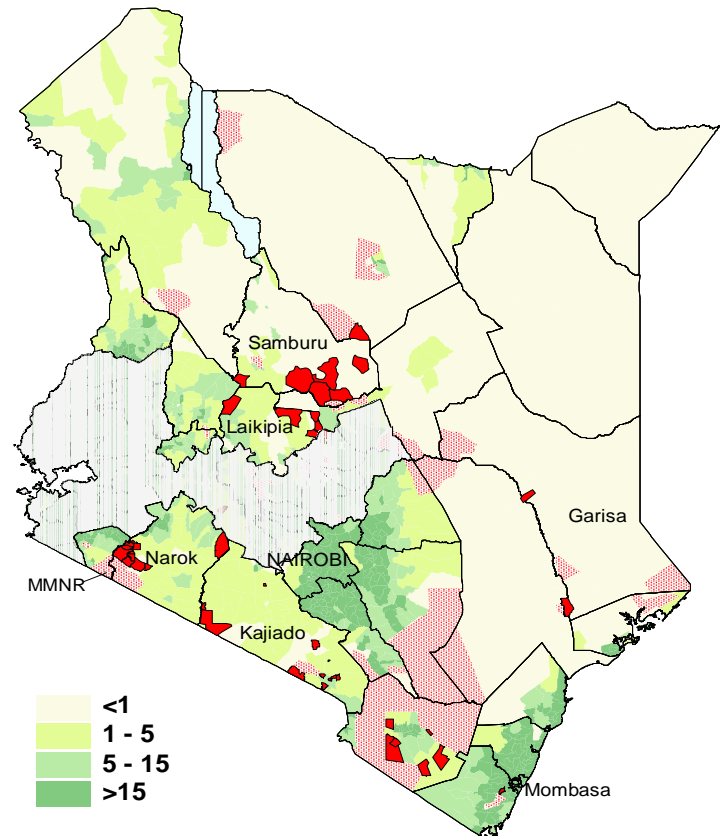


Changes in ASAL 1970 – 2010

Land Area and Animal Populations	Agro Climatic Zone (ACZ)						ASAL	
	III-IV sub-humid		V semi-arid		VI-VII hyper arid		Area	%
	Area	%	Area	%	Area	%		
Total ACZ area	35,645		80,667		389,274		505,586	
Cropland 1970s	13,322	37.4	23,447	29.1	5,001	1.3	41,770	8.3
Cropland 2000	16,329	45.8	29,816	37.0	9,840	2.5	55,984	11.1
Change in cropland	3,007	22.6	6,369	27.2	4,839	96.8	14,214	34.0
Rangeland converted	Yes	No	Yes	No	Yes	No	Yes	No
Change wildlife (%)	-80.5	-84.6	-56.7	-42.4	-62.1	-62.9	-65.5	-68.1
Change livestock(%)	4.8	20.5	-46.7	-30.2	-47.5	-14.6	-35.1	-15.6

Conservancies and poverty gap

- 43 conservancies in Kenya
- Mostly located in lands where few \$ per ha suffice to fill the poverty gap



Contribution payments wildlife conservation to pastoral households

Site	N	Mean	CV	Contribution (%)	
				Agriculture	Conservation
Mara ^{1,a}	210	0.84	116	70	21
Kitengela ^{1,a}	177	1.78	100	55	3
Amboseli ^{1,a}	184	0.35	105	78	2
Longido ^{1,c}	229	0.16	207	64	1
Tarangire ^{1,c}	26	0.85	93	64	6
OOC – PWC 2008	59	1.83	115	79	
OOC + PWC 2008	72	2.55	89	52	33
OOC – PWC 2009	58	1.51	157	79	
OOC + PWC 2009	73	2.45	93	42	40

Categories of conservancies

Tenure	Funding	Conservancies	
		2000	2010
Communal	Market	2	7
	Public	3	14
Private	Market	1	9
	Public	1	6

Tipping points in pastoral land

Land tenure change

Communal lands ----- Privatized lands

- **Open access**

- Allowing mobility

- **Benefits livestock keepers**

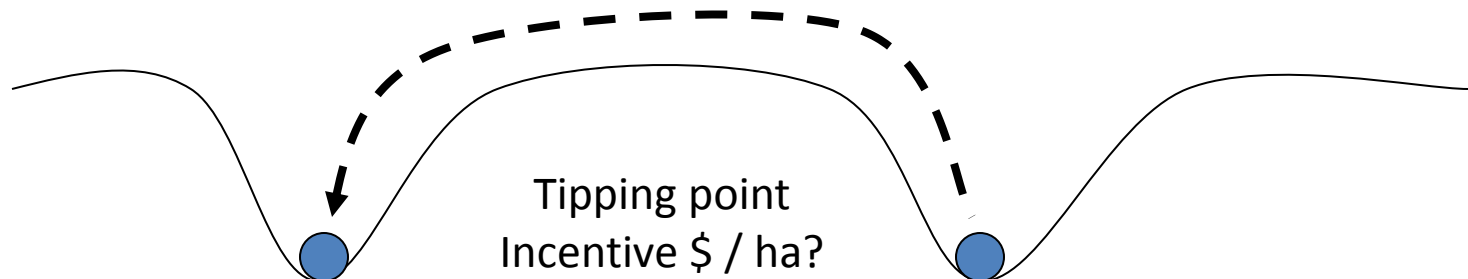
- Livestock resilient drought
- Potential income wildlife

- **Closed**

- Mobility constrained

- **Problems livestock keepers**

- Increased vulnerability
- Loss environ benefits



Payment for wildlife conservation

- Some insight level payments for wildlife conservation
 - Significant in Mara conservancies and Kitengela
 - Less clear in other areas
- At what level of payment does the system tip?
- How does payment for wildlife conservation affect pastoral land use decision making?

