

Offers world-class research opportunities, education, executive training courses and advice to students, universities, governments and professional practice.

**UCL is a remarkable place.** The world's 4<sup>th</sup> ranked university has an outstanding community of academics. Their broad international student base includes over 2,000 from China – many of whom enjoy studying at **UCL's Bartlett Faculty of the Built Environment**.

**The Bartlett's** academic experts can help policymakers, urban planners and others to design and deliver safe, well connected places for communities to live, learn and earn and which celebrate China's rich cultural heritage.

**The Bartlett** would be pleased to discuss how they can help your education or strengthen your organisation's skill-sets and/or competitiveness using eg. e-Learning; consultancy; CPD courses; 'summer schools'; critique panels and student placements.



## Architecture and design

The Bartlett School of Architecture focuses on architectural design, architectural history and theory, computer aided design and manufacture, technology, professional studies, sustainability and urban design. The Bartlett's scholars and architects have provided advice and delivered workshops across China which includes designs for major schemes in China. <https://www.ucl.ac.uk/bartlett/architecture>

## Sustainable urbanism

Bartlett's School of Planning and Development Planning Unit (DPU) both offer expertise in planning, geography, design, sustainability, economics, sociology and politics with DPU having particular extensive experience in capacity-building in the 'Global South'. They bridge policy and practice and their research feeds through into their education, training and advisory activities – including 'Summer Schools'. see [/planning](#) and [/development](#)

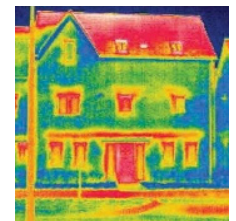


## Energy and natural resources conservation

The UCL Energy Institute focuses on understanding and reducing energy demand mainly in transport; buildings and industry whilst UCL's Institute for Sustainable Resources addresses topics such as resource efficiency; circular economy; eco-innovation, and low carbon societies. Both institutes play leading roles in advising government and industry. See [/energy](#) and [/sustainable](#)

## Healthier living and wellbeing

The UCL Institute for Environment Design Engineering are interested in making our buildings, towns and cities better places in which to live, with a focus on health, human wellbeing, productivity, energy use and climate change. In buildings topics such as air quality, lighting, BIM, energy usage and facilities management address complex behaviours. [/environmental-design](#)



## Digital tools and visualising behaviours

The Bartlett's Centre for Advanced Spatial Analysis captures city / environmental / movement data at many scales and transforms it into visual representations which support evidence-based policymaking and city strategy development. Space Syntax Limited are an international planning and design consultancy, created by The Bartlett. It has developed a set of advanced software tools that evaluate the role of spatial layout in shaping patterns of human behaviour. This technology has been applied in hundreds of consultancy projects throughout the world over many years. [/casa](#) and [www.spacesyntax.com](http://www.spacesyntax.com)



Unrivalled expertise in sustainability research & practice



## Construction & Project Management

Students join the world's best companies to help finance, manage and deliver mega projects. There are strong international links with many leading academic centres of excellence and The Bartlett Infrastructure Centre offers intensive executive training courses in PPP and innovative financing mechanisms which can be delivered in UK and/or China. See [/construction](#)

## Preserving heritage

UCL's Institute for Sustainable Heritage trains future managers, curators and conservators of sustainable heritage, and researchers whose work leads to innovative, sustainable, conservation solutions. Themes include heritage risk and resilience; heritage science; modern materials and future heritage. These form the backbone of the research and teaching programmes. See [/heritage](#)



Introducing The Bartlett's newest Institutes... new directions in research, education, executive training and advisory opportunities



## Additional value from real estate

The Bartlett Real Estate Institute (BREI) is a brand new global institute that is rethinking the traditional view of real estate. By adopting a multi-disciplinary approach and looking beyond the value of physical assets as being the major part of urban and social cultures BREI aims to harness the built environment's true potential and share this knowledge through the delivery of executive training courses and masters programmes. See [/real-estate](#)

## Digital Innovations

UCL's Institute for Digital Innovation in the Built Environment draws on digital advances such as building information modelling (BIM), smart cities, big data and the internet of things and in doing so are dedicated to improving process and cost-efficiencies, promoting sustainable futures, and enabling social and cultural transformations. See [/digital](#)



## Tacking inequalities and prosperity

UCL's Institute for Global Prosperity (IGP) recognise that cities are fast-changing. Take East London where social and economic deprivation sits alongside technological innovation and large-scale community redevelopment. This, coupled with the historical depth of existing research and policy intervention, means that we have a unique opportunity to explore the past, present and future determinants of prosperity in the area. Lessons from other global locations too can be learned. See [/igp](#)

## Innovations in public policy

IIPP is also a brand new UCL institute providing radical thinking about public policy driven by public purpose. Tackling the grand challenges of the 21st century requires the public, private and third sectors to work together to drive innovation. In this endeavour, the public sector cannot be limited to fixing market failures and 'de-risking' business. It needs to actively co-create and shape the markets of the future, and welcome the underlying process of experimentation and exploration. See [/public-purpose](#)

