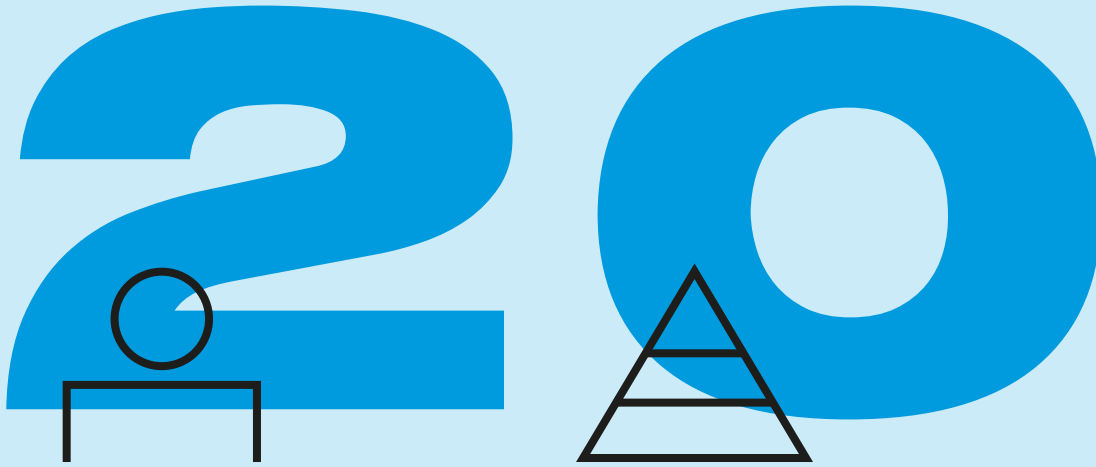


# CRITICAL MASS

NEW SPACE, NEW PROGRAMMES, AND MORE NEW STUDENTS THAN EVER - IT ALL POINTS TO THE BARTLETT'S INTENTION TO BECOME THE WORLD'S NUMBER ONE FACULTY OF THE BUILT ENVIRONMENT.

THE BARTLETT REVIEW 2016  
THE NUMBERS



**2363**  
STUDENTS  
IN 2015/16

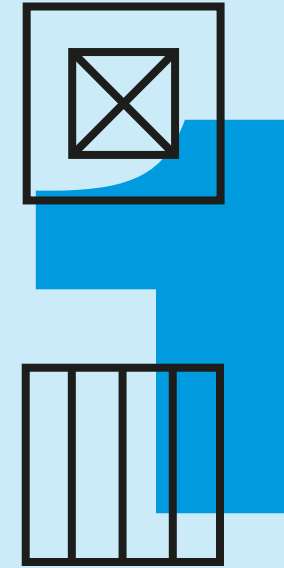
**2161**  
STUDENTS  
IN 2014/15

**148**  
BSCs AWARDED  
IN 2015/16

**1285**  
MASTERS  
DEGREES  
AWARDED  
IN 2015/16

**34**  
PHDs AWARDED  
IN 2015/16

**21%**  
INCREASE  
IN SPACE  
FOR TEACHING,  
MAKING AND  
RESEARCH



**8.3%**  
INCREASE IN  
RESEARCH  
FUNDING IN 2016  
COMPARED TO  
PREVIOUS YEAR

**NEW INSTITUTE  
OPENED IN 2016**

**THE INSTITUTE FOR  
DIGITAL INNOVATION IN  
THE BUILT ENVIRONMENT**



**NEW PROGRAMMES**

**2015/16**  
MRes Architecture & Digital Theory

**2016/17**  
MSc in Global Prosperity  
MSc in Sustainable Resources

**2017/18**  
MSc Health, Wellbeing and Sustainable Buildings  
MEng Engineering & Architectural Design  
MA Situated Practice  
MArch Design for Performance and Interaction  
MArch Design for Manufacture  
MPlan City Planning  
MSc Spatial Data Science & Visualisation