

Graphic Skills Portal

Technique Handouts

1

ANALYSING



How to download a map with Digimap and edit it using Illustrator

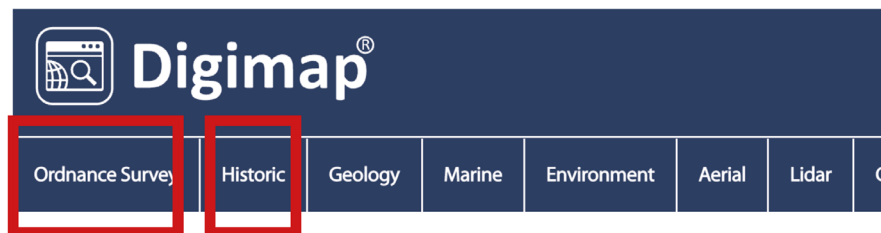
URBAN
GRAPHICS
SKILLS

1. How to download a map with Digimap and edit it in Illustrator

What types of maps are available on DIGIMAP?

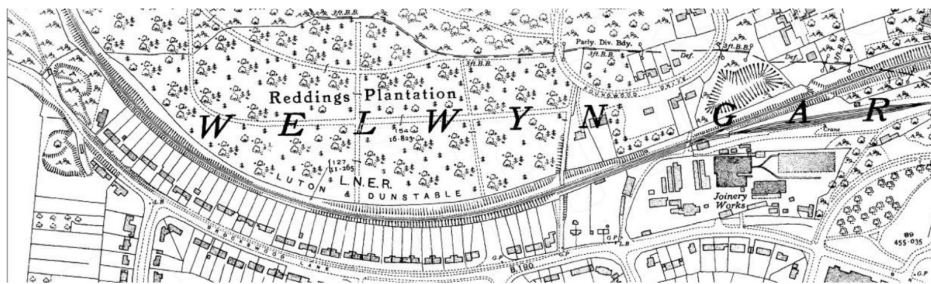
There are several ways to download maps from Digimap. However, the most commonly used in urban design and planning are via:

1. Historic map
2. Ordnance survey



Historic maps:

Historic Digimap provides historical Ordnance Survey maps of Great Britain. Historic map is useful in reviewing how a place has changed over time, and therefore to analysing site history.



Historic

[About](#) [Getting Started](#) [FAQ](#)

Historic Digimap provides historical Ordnance Survey maps of Great Britain. The historical mapping is licensed from [Landmark Information Group](#). Historic Digimap offers the following map images, the originals of which were published between 1846 and 1996:

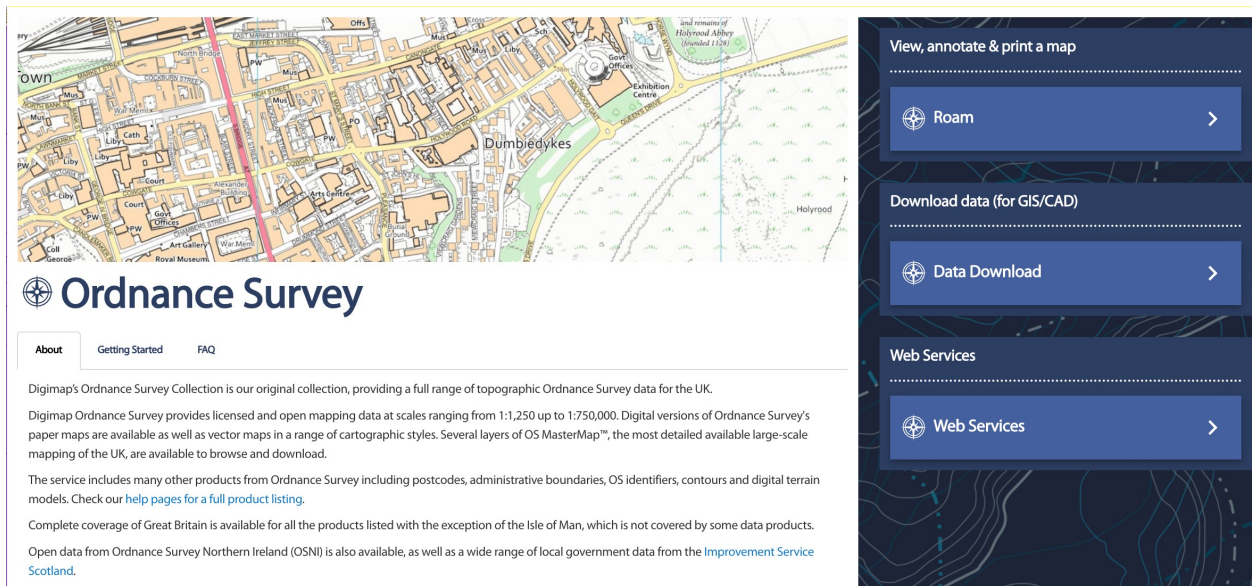
- All available County Series maps at 1:2,500 and 1:10,560 scales
- All available British National Grid maps (1943 to 1996) at 1:1,250, 1:2,500 and 1:10,560/10,000
- Selected Town Plan maps (1848 and 1939) at scales of 1:500, 1:528 and 1:1056
- Over 400,000 geo-referenced digital map images are available for use in GIS and CAD.
- Available coverage of Great Britain varies between the historical map editions. Generally, the 1st editions in each Map Series provide full coverage of Great Britain. The subsequent revisions of each Series tend to have increasingly sparse coverage.

Check our help pages for a [full list of the historical mapping available](#).

- View, annotate & print a map
 - Historic Roam
- Download data (for GIS/CAD)
 - Historic Data Download
- Web Services
 - Web Services

Ordnance survey maps:

The most useful Digimap tool to create base plans is the ordnance survey (sometimes you may find the map is slightly outdated, in this case you may have to make some alterations yourself, however this is very rarely the case unless a new development has just been built in the area you are studying).



The screenshot displays the Ordnance Survey website. On the left, a topographic map of Edinburgh is shown, with labels for 'Dumbiedykes', 'Holyrood', and 'Exhibition Centre'. Below the map is the 'Ordnance Survey' logo and a navigation menu with 'About', 'Getting Started', and 'FAQ' tabs. The main content area contains text describing the Ordnance Survey Collection and its products. On the right, a dark sidebar with a topographic map background contains the following sections:

- View, annotate & print a map**
 - Roam >
- Download data (for GIS/CAD)**
 - Data Download >
- Web Services**
 - Web Services >

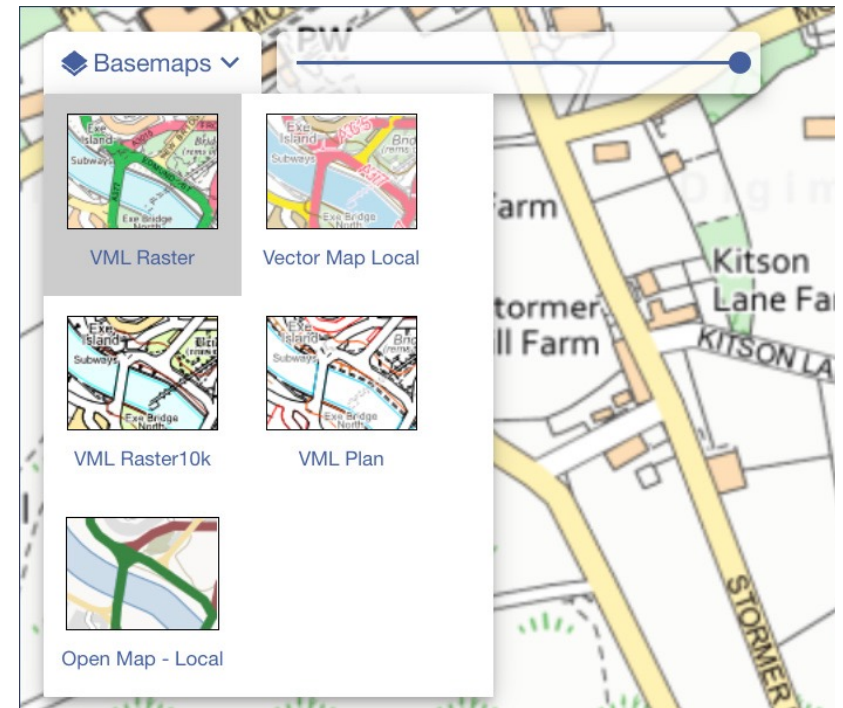
Ordnance survey is divided in:

- **Roam:** download PDFs of detailed ordnance survey data for use in Illustrator, etc. It is possible to download raster images (JPEG images editable using Photoshop) or vector images (layers-based images editable using Illustrator – *SUGGESTED!*).
- **Data download:** download CAD file (.Dwg) from a wider range of data sources, the most useful ones are:
 - 'OS Mastermap Topography' (it includes buildings' trace, streets, blocks, etc.)
 - 'OS Mastermap Building Heights' (useful for 3D context)
- **Web services:** Web Map Services (WMS) can be used to display mapping images from the Ordnance Survey Collection in most GIS systems.

Downloading a map via ROAM

Here some steps to follow in order to download a map using the 'Roam' option in Digimap:

1. Find the site you want to survey.
2. Zoom in and out to view various levels of detail for each site.
Turn off and on layers that may be useful in the type of map you wish to create.
 - Only the most zoomed in level will reveals vector data, and therefore is editable in Illustrator – you will see a change in the appearance of the map when you are zooming in enough.
 - If you open the drop-down menu 'basemaps', it would be good to select the option 'Vector Map Local' to download a map that would be editable with Illustrator.

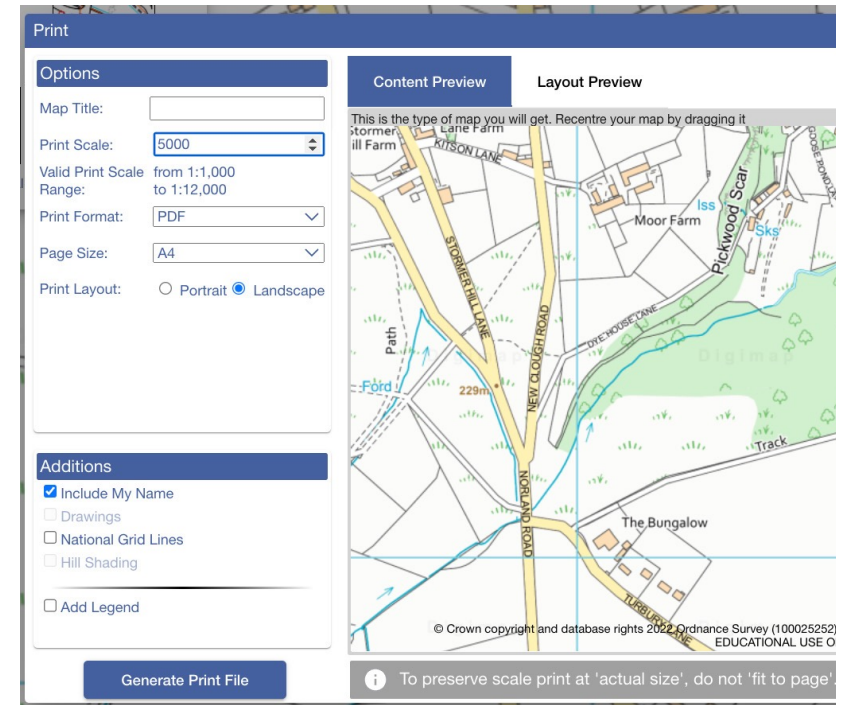


- It is usually helpful to turn off all layers that have text or symbols, as these will come through as individual objects.
- At this point, you can also calculate the floor area by selecting the map tool option in order to calculate distance and area of buildings.

Once you are satisfied, select the print icon. Here, you can choose the paper size and the scale. Note: Higher is the scale (2500, 5000, 10000, etc.), smaller will be the map.

Click 'generate print file', download the file and save it in a folder labelled.

This image will be editable using Illustrator, but you can also modify it using Photoshop.



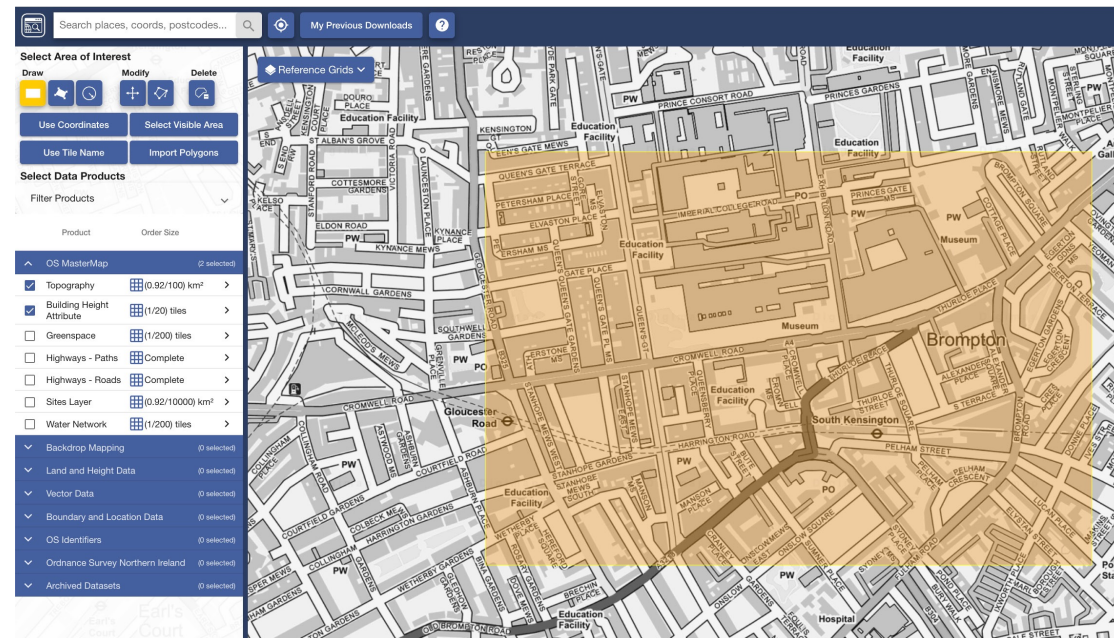
Downloading a map via DATA DOWNLOAD

Here some steps to follow in order to download a map using the 'Data download' option in Digimap:

1. Find the site you want to survey.
2. Zoom in and out to view various levels of detail for each site. In this case, it would be good to go as close as possible to the area to be downloaded in order to reduce the amount of data to download.
3. From the left-side toolbar select the 'draw rectangle' option. Pick one corner of the map, and then select the opposite corner to release the area to be downloaded.

Downloading a map via DATA DOWNLOAD

4. A yellow area will be visible. Now, for the 'Select Data Products' on the left-side toolbar, pin the data to be downloaded. The most useful ones to select are: a) 'OS Mastermap Topography' (it includes buildings' trace, streets, blocks, etc.); b) 'OS Mastermap Building Heights' (useful for 3D context).
5. Once you are satisfied with the selected data, click on 'add to basket' below.
6. Now you should be able to (a) choose the version; (b) change the format of your selected data (use Dwg); (c) Select layers you may want in your map.
7. Request download – once ready, the data will be sent to you via your UCL email.





THE BARTLETT