



**Wolves Lane
Horticultural
Centre**



4x1 Initiatives – our Research Results

StART

Wolves Lane

STAG

Old Kent Road



Asant Agyare | Paul Boettcher | Tameem Emam | Reina Kosugi
Sipei Lai | Danyang Li | Hinddou Maiga | Christopher Robinson

Context

“Several existing social infrastructure is under threat in the area, such as libraries and physical spaces used by local community organizations.”

27.11.2017, Member of the Inclusion Subgroup, StART

“HDV, or as we call it, The BEAST!”

30.11.2017 Community Organiser, Selby Trust

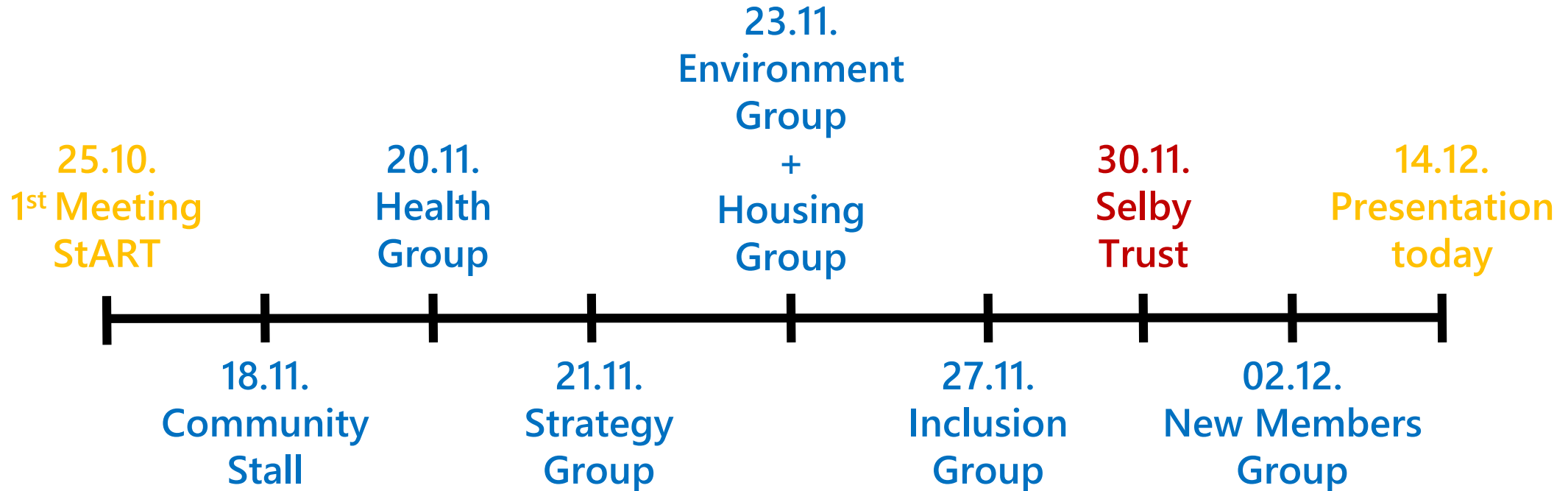
**10,000 people on the
Haringey Council
Register List**

“There is a disconnection between the language of the GLA, and what is actually happening on the ground...”

27.11.2017, Member of the Inclusion Subgroup, StART



Hearing from the Community



Key Priorities of StART

“There is a genuine intention to be democratic and inclusive of everybody. Our goal is to include as many people as possible so that it is a truly democratic project.”

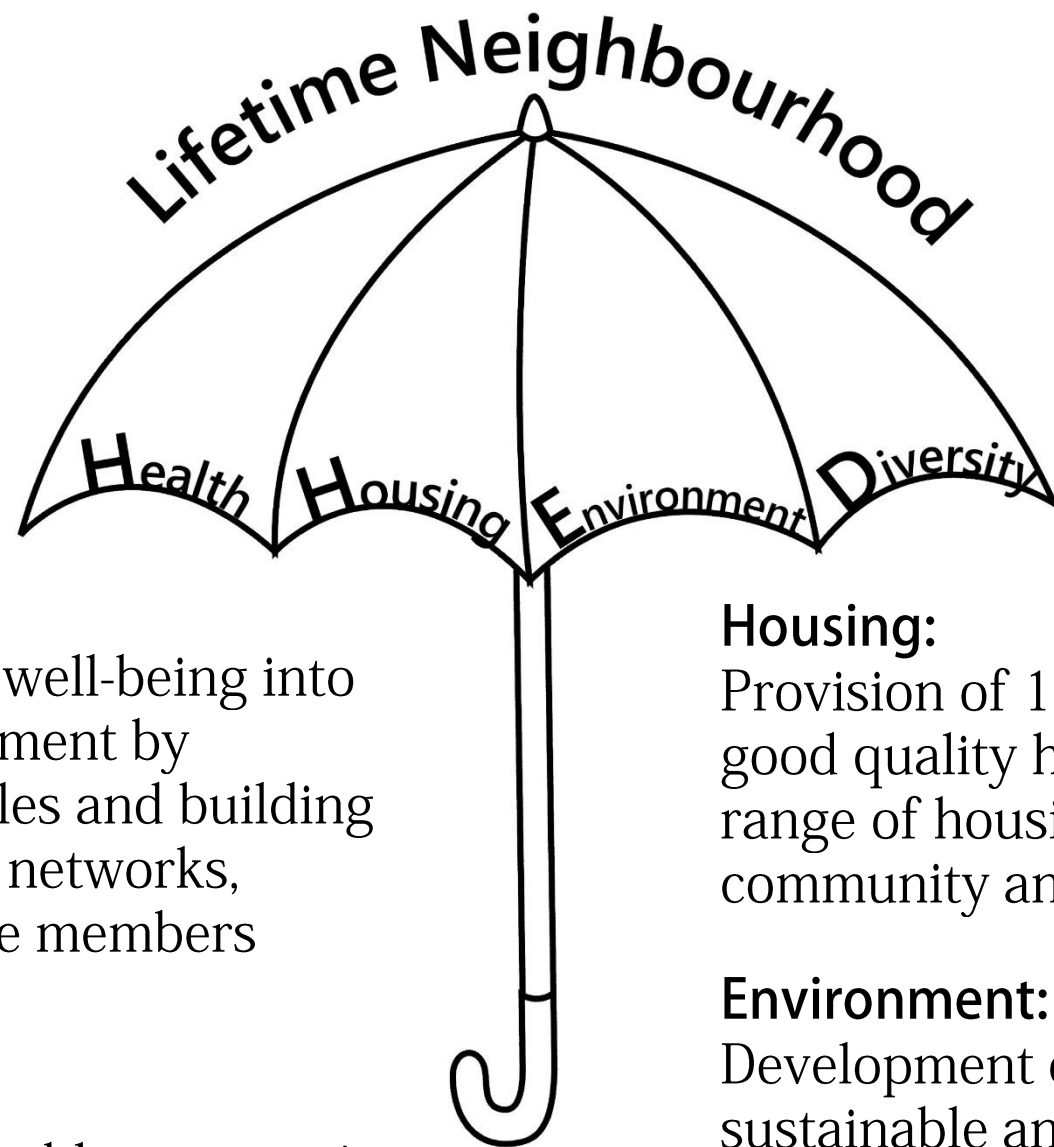
27.11.2017, Member of the Housing Sub-Group, StART

Neighbourhoods are the "Fabric of Life" and are therefore irreplaceable.

25.10.2017, Member of the New Members Sub-Group, StART

“We have the general understanding that health and well-being is directly influenced by the environment surrounding the individual. That’s why we try to preserve the nature to simultaneously benefit from it.”

23.11.2017, Member of the Environment Sub-Group, StART



Health:

Integration of health and well-being into all aspects of the development by promoting healthy lifestyles and building strong, supportive health networks, particularly for vulnerable members within the community.

Diversity:

Creating a socially sustainable community, that recognises and incorporates diversity, in the community-led decision-making process.

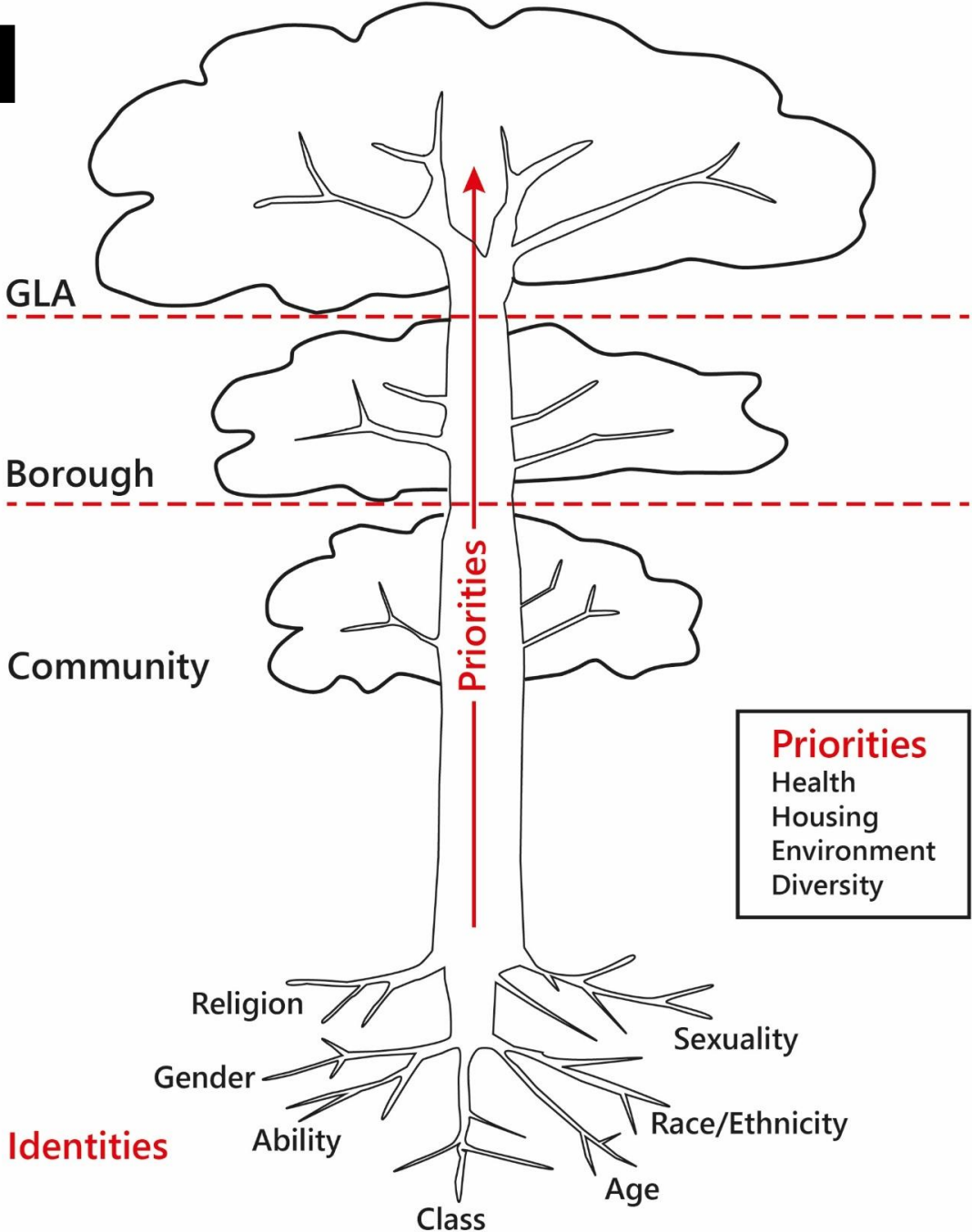
Housing:

Provision of 100% genuinely affordable, good quality housing, that responds to the range of housing needs within the community and ensures security of tenure.

Environment:

Development of an environmentally sustainable and resilient community that balances the preservation and accessibility of natural spaces and their integration into the social fabric.

Conceptual Tool



Mainstreaming Strategies

Outcome: Social Impact Assessment included in London planning process	
<p>Strategy 1:</p> <ul style="list-style-type: none">• Create a community-led SIA tool• Build alliances with civil society organizations• Civil society mounts pressure on Mayor• Mayor announces commitment to including SIA in planning process• GLA amends Integrated Impact Assessment to include SIA and reflect community-led approach	<p>Strategy 2:</p> <ul style="list-style-type: none">• Create a community-led SIA tool• Conduct pilot SIA on St. Ann Hospital redevelopment• Present results of Pilot to Borough and GLA representatives• Through alliances representatives in the Borough, lobby the Mayor for political commitment• GLA amends Integrated Impact Assessment to include SIA and reflect community-led approach

Next...
Wolves Lane



Authors:

Masato Akashi
Gordon Jennings
Kaixin Lin
Daniela Muñoz
Qihua Qi
Yuqi Shi
Shaba Taskin
Fernando Toro
Vivian Yeboah



**The London Plan &
Wolves Lane community**

**PU3: Practice Development Planning Module
MSc Urban Development Planning**

December 2017

ORGANICLEA

CROP
DROP



LONDON
GROWN

Deirdre
★ Dee
★ Woods



WOLVES LANE
HORICULTURAL
CENTER



FRIENDS OF
WOLVES LANE

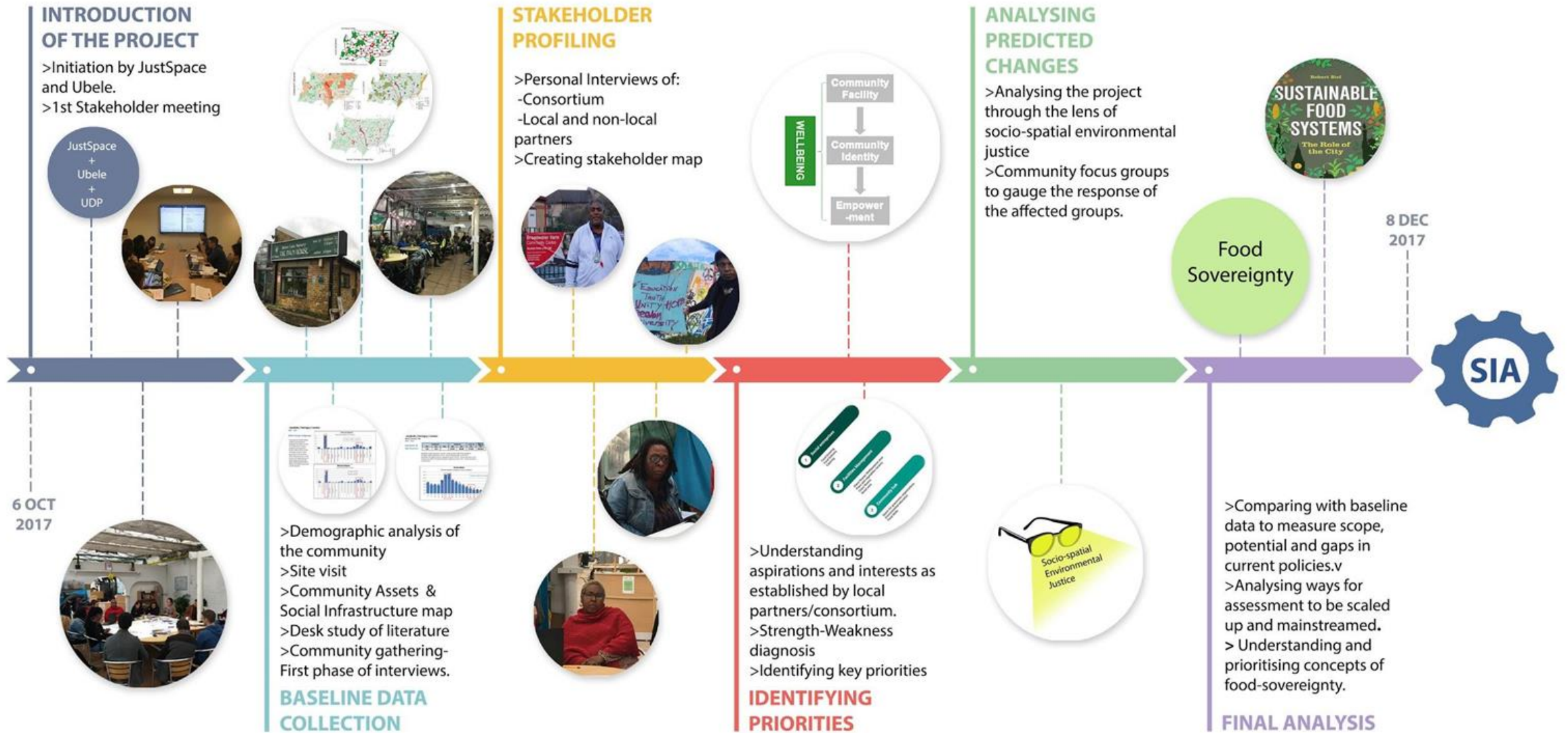
GO GROWN



Working inter-generationally to secure the future of our community



2. Forming an SIA through the lens of Wolves Lane





- Provide better food
- Strengthen the food system
- Environmental education
- Improve community networks
- Improve local economy



- Improve access to affordable and quality food
- Support excluded minorities
- Support young women
- Improve local economy
- Support people to develop business skills
- Improve social cohesion



- Food production
- Education and skills on food growing and environment
- Development of a community led asset



- Environmental education
- Home schooling
- Support for one parent household
- Identity recognition
- Community Organizations support

Accessible Food + Community + Inclusion + Education + Space + Participation + Culture

FOOD SOVEREIGNTY

I
N
T
E
R
V
I
E
W
S

I
N
T
E
R
V
I
E
W
S

Testimonials

Healthy food is not affordable for ordinary working class.

Angela

We want Wolves Lane to be a community Centre, for all.

Mandy

The community needs to be in the heart of any development plan

Moussa

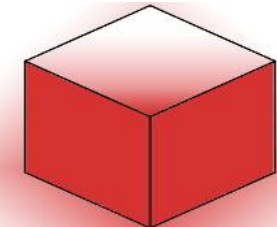
Groups who usually have access to community spaces are not diverse. They don't represent London.

Yvonne



We want to make a change, for a more a more caring community

Salford



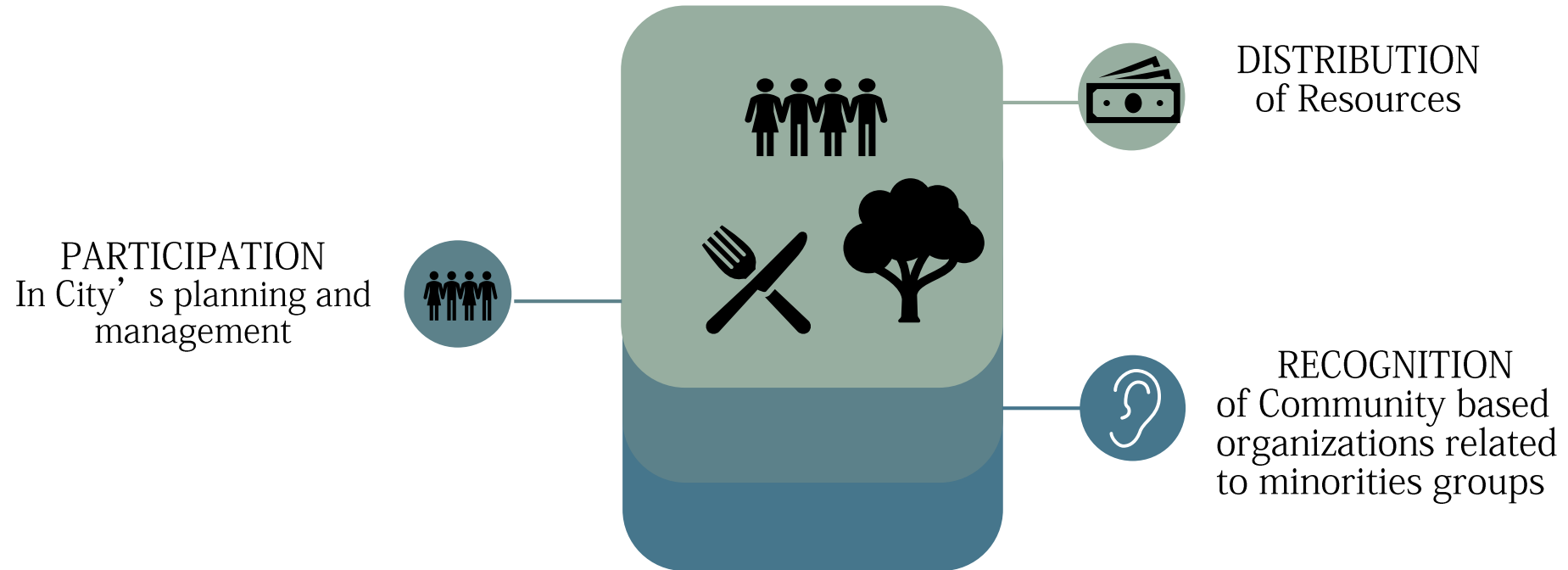
THE SELBY TRUST
Many Cultures,
One Community



Working inter-generationally to secure the future of our community



Community Priorities to Achieve Social Environmental Justice



WOLVES LANE Recognised for its full Potential

COMMUNITY ASSET

Assets that are essential to a community to access healthy and culturally appropriate food produced

SOCIAL INFRASTRUCTURE

Services and facilities that maintain and improve life quality

01

Community based organizations

02

Community garden

03

Nursery and horticulture

04

Urban Farm

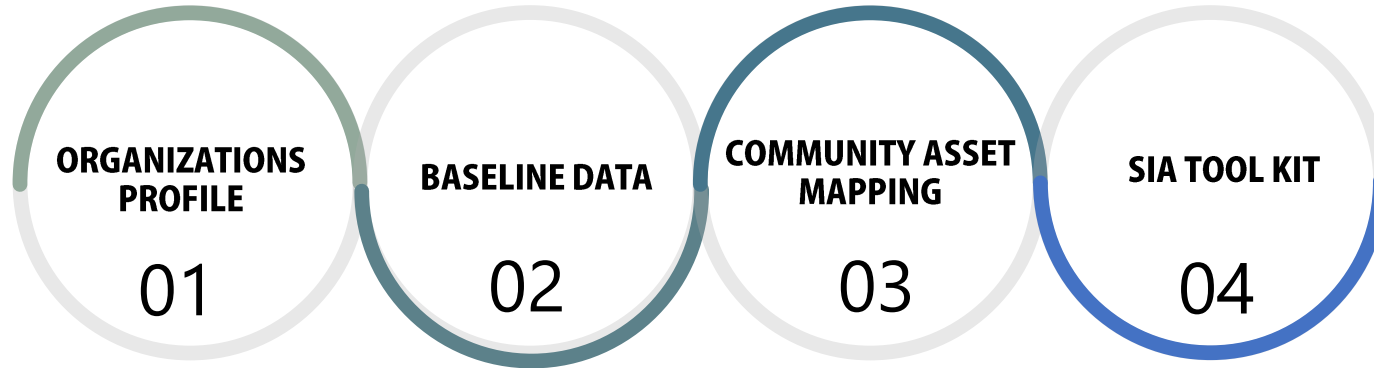
05

Markets

06

Allotments

Index of Products



Next up...
STAG

Social Impact Assessment: Gypsies and Travellers in Southwark

14th December 2017

Bing Bing, Federico, Grace, Hannah, José, Jun, Karlene, Nada, Yiorgos.

/ Research and Interviews

Step 1: Literature Review

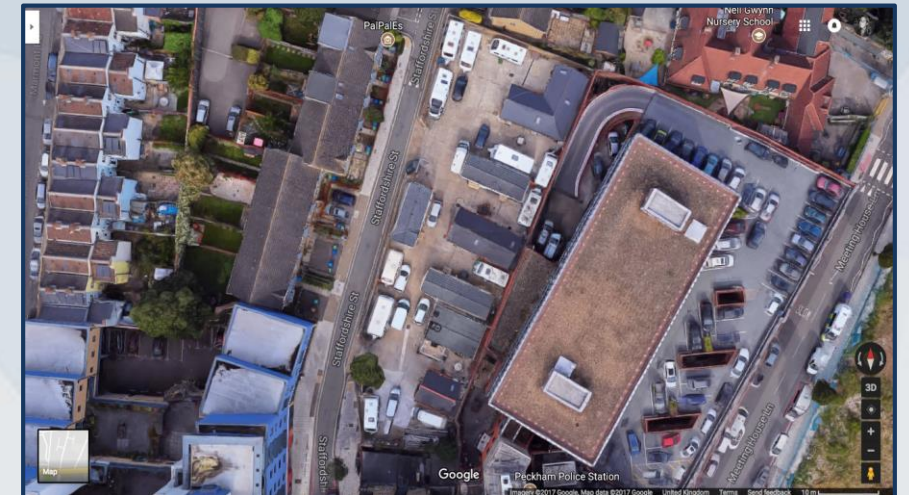
- UK, London, and Southwark plans and policies (general, and specific to Gypsies & Travellers)
- Reports, articles, and websites of Gypsy and Traveller special interest groups, community organisations, and other universities

Step 2: Meeting with Partners

- Initial visit to Spring Tide Close
- Introduction and first planning meeting with STAG representatives

Step 3: Focus Groups, Site Visits and Semi-Structured Interviews

- 1 interview with a female Traveller at the STAG office
- 1 focus group with 4 female Travellers in the Spring Tide Close site
- 1 interview with a female housed Irish Traveller
- 6 interviews with Travellers in the Ilderton Road site (3 males 3 females)
- 1 interview with 2 STAG Trustees



/ Lifetime Neighbourhoods



Source: Just Space, 2016. Towards a Community Led Plan for London.
<https://justspacelondon.files.wordpress.com/2013/09/just-space-a4-community-led-london-plan.pdf>

Lifetime neighbourhoods are the place where quality of life and space intersect; where socio-spatial environmental justice can be achieved.

An ideal site for gypsies and travellers in a lifetime neighbourhood is one that has:

1

**Communal Spaces, Facilities, Services and Activities
— Well Run, Accessible, Affordable and Relevant to All**

2

Homes That Meet Needs

3

Good Consultation, Democratic Accountability and Empowerment of Communities

/ Socio-Spatial Environmental Justice



Recognition

“Family and caring for members of our family are some of the most important things for us.”

“Children’s education was the main reason for us to settle down.”

“Traveller life is still threatened. We still suffer from discrimination such as in schools, church and when booking weddings.”

“We need good quality communal spaces within the site.”

/ Socio-Spatial Environmental Justice

Recognition



Distribution

“We would like to live in sustainable living spaces.”

“If you put all four sites in Peckham together, it wouldn’t make one proper site.”

“It would be nice to have fair play between different people who want somewhere to live.”

/ Socio-Spatial Environmental Justice

Recognition

Participation

“No-one really listens to us or tries to understand our way of life.”

“Nobody consulted us about what the temporary site would look like.”

“There was someone from the council who helped us but they ‘let him go’.”



Distribution

/ Socio-Spatial Environmental Justice

Category 1 – Communal Spaces, Activities.

Category 2 – Homes that Meet Needs

Category 3 – Democratic Accountability

Lifetime Neighbourhoods

Participation

Capacity to participate in local decision-making processes. (3)

Control over use of space on site. (1)

Definition: A commitment to redressing material inequalities through redistribution, valuing diverse spatial practices and needs through recognition, and countering exclusion and marginalisation through parity of participation.

Recognition

Appropriate use of space/layout in the site. (2)

Participation in identity-building cultural activities. (1)

Distribution

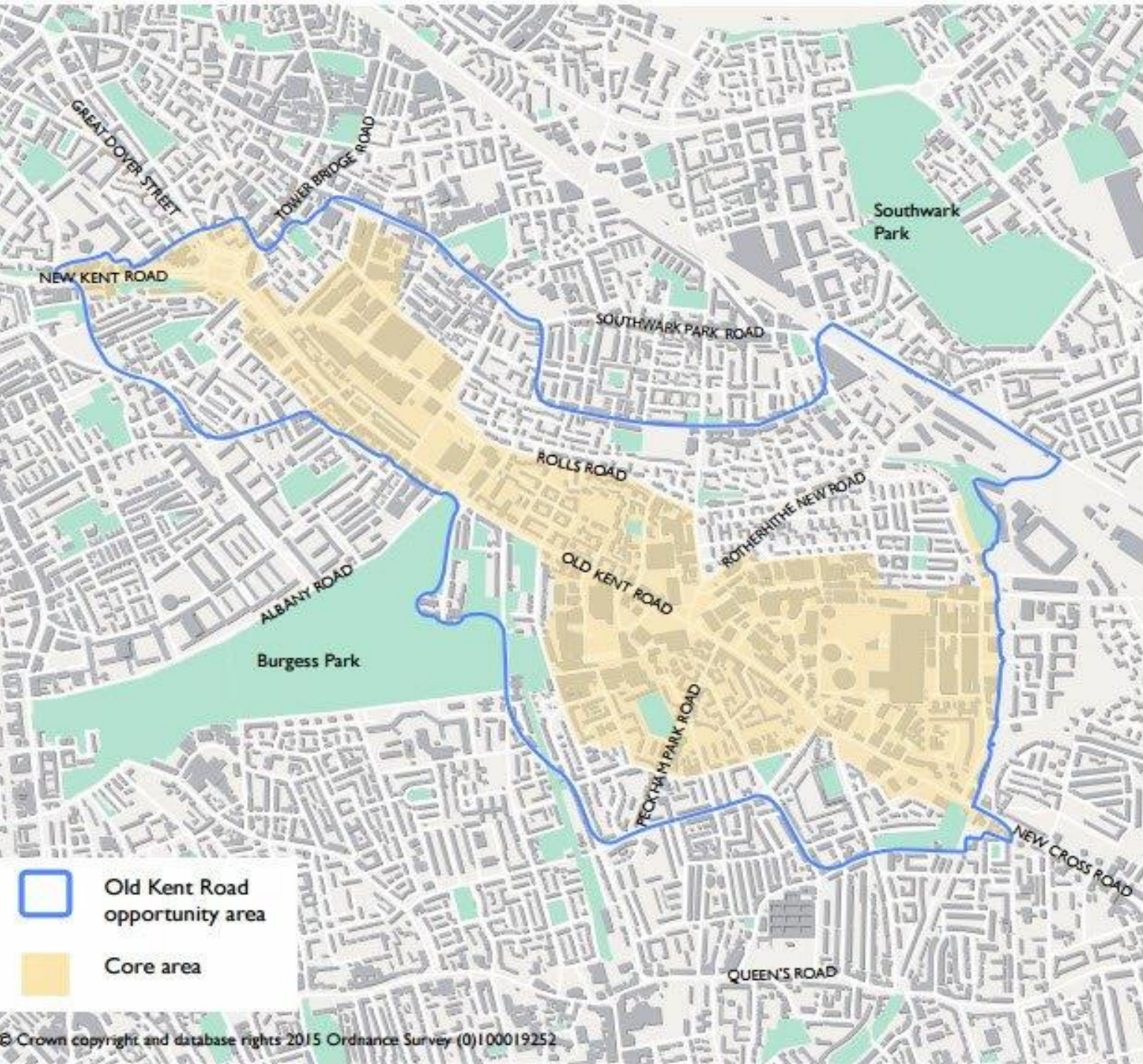
Sufficient number of appropriately-sized pitches. (2)

Access to non-discriminatory health and educational facilities. (1)



Thank you!

Next up...
Old Kent Road



Old Kent Road Opportunity Area

14th December, 2017

Jibril Maxamad, Viola Li,
Balint Horvath, Marwa
Barakat, Mateo Lu, Shiori
Sato, Tiara Sadikin,
Clementine Hugo-
Hamman, Tianyuan Weng



Fieldwork **Developing the Social Impact Assessment tool**





Feminist Library

Pam Pamla



SG Tenant Organisation



Church

Priorities of communities:
Local Business & Social Enterprise
Housing
Community Spaces

Challenges

Three Priorities on Old Kent Road

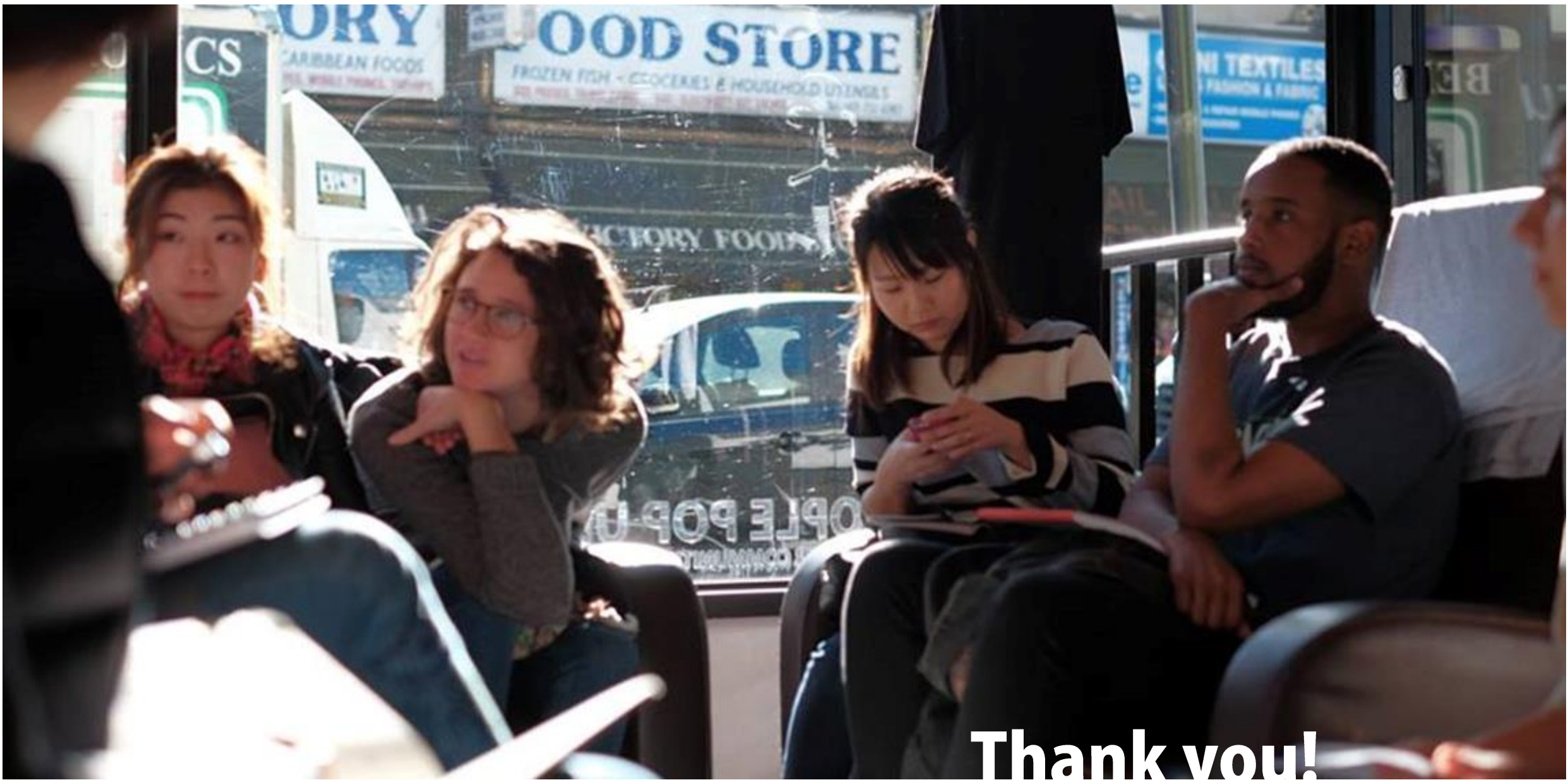
	Local businesses and Social Enterprise	Housing	Community spaces
Challenges	<ul style="list-style-type: none"> ❖ Displacement or loss of independent Ethnic and Migrant businesses ❖ Insecure tenure ❖ Pressure on business readiness ❖ Unequal competition with chain stores ❖ Loss of industrial and manufacturing industry ❖ Service sector (Waitrose and Pret a Manger) for middle class price out local small shops 	<ul style="list-style-type: none"> ❖ Absence of not-for-profit socially rented housing ❖ Local families cannot afford “affordable housing” ❖ Number of “affordable housing” is decreasing ❖ Deteriorating quality of council social housing ❖ Potential relocations of current residents 	<ul style="list-style-type: none"> ❖ Loss of local businesses with socio-cultural importance ❖ Prices for community spaces are increasingly unaffordable ❖ Insecure funding support for community spaces ❖ Loss of independence for people to manage their own spaces

Strategies Using the Social Impact Assessment tool

Strategy **ONE**: By the use of the SIA tool, Just Space is strengthened to increase evidence-based pressure on GLA, as well as calling out the Mayor's commitment to work for all. Simultaneously, community organisations could learn to apply the SIA tool locally to make their alternative visions stronger and negotiate better with the council.

Strategy **TWO**: DPU could mobilise UCL to use the SIA tool for self-assessment in its new developments in East London, and therefore set precedent for London regenerations.





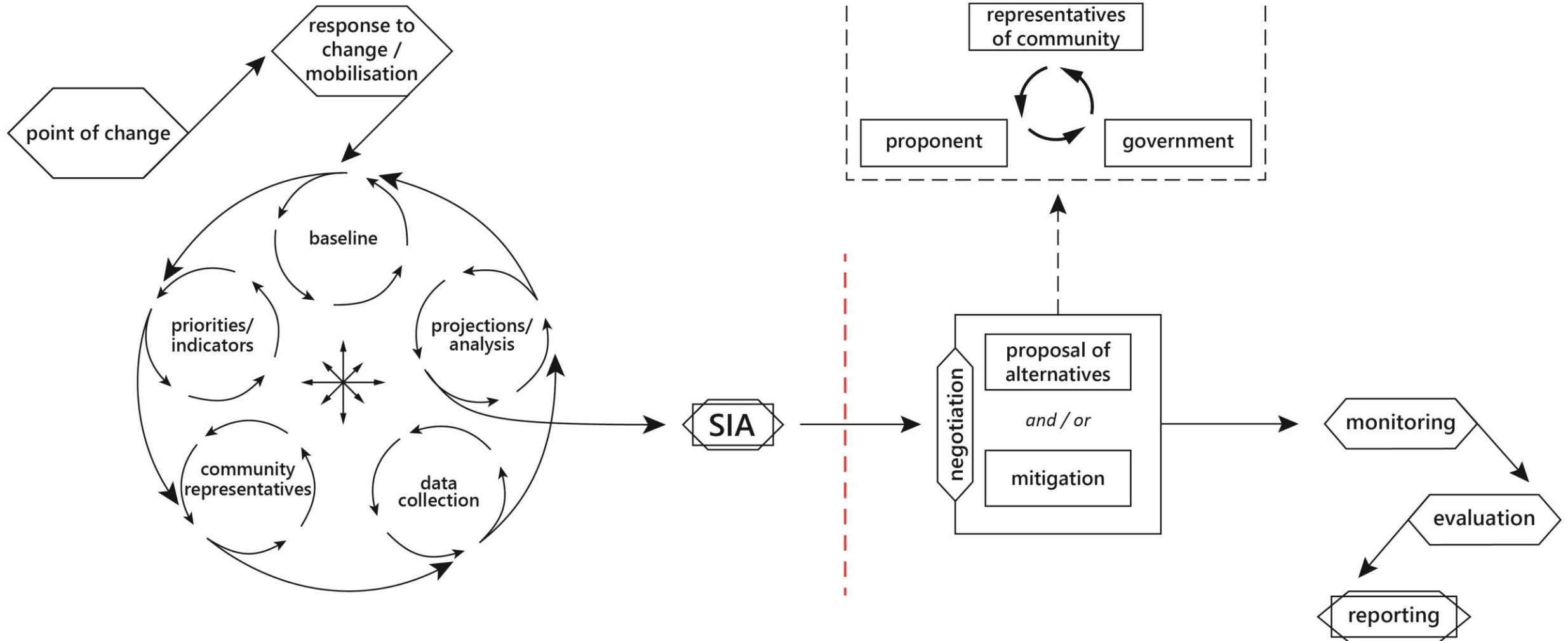
Thank you!
We welcome any questions

Social Impact Assessment Tool

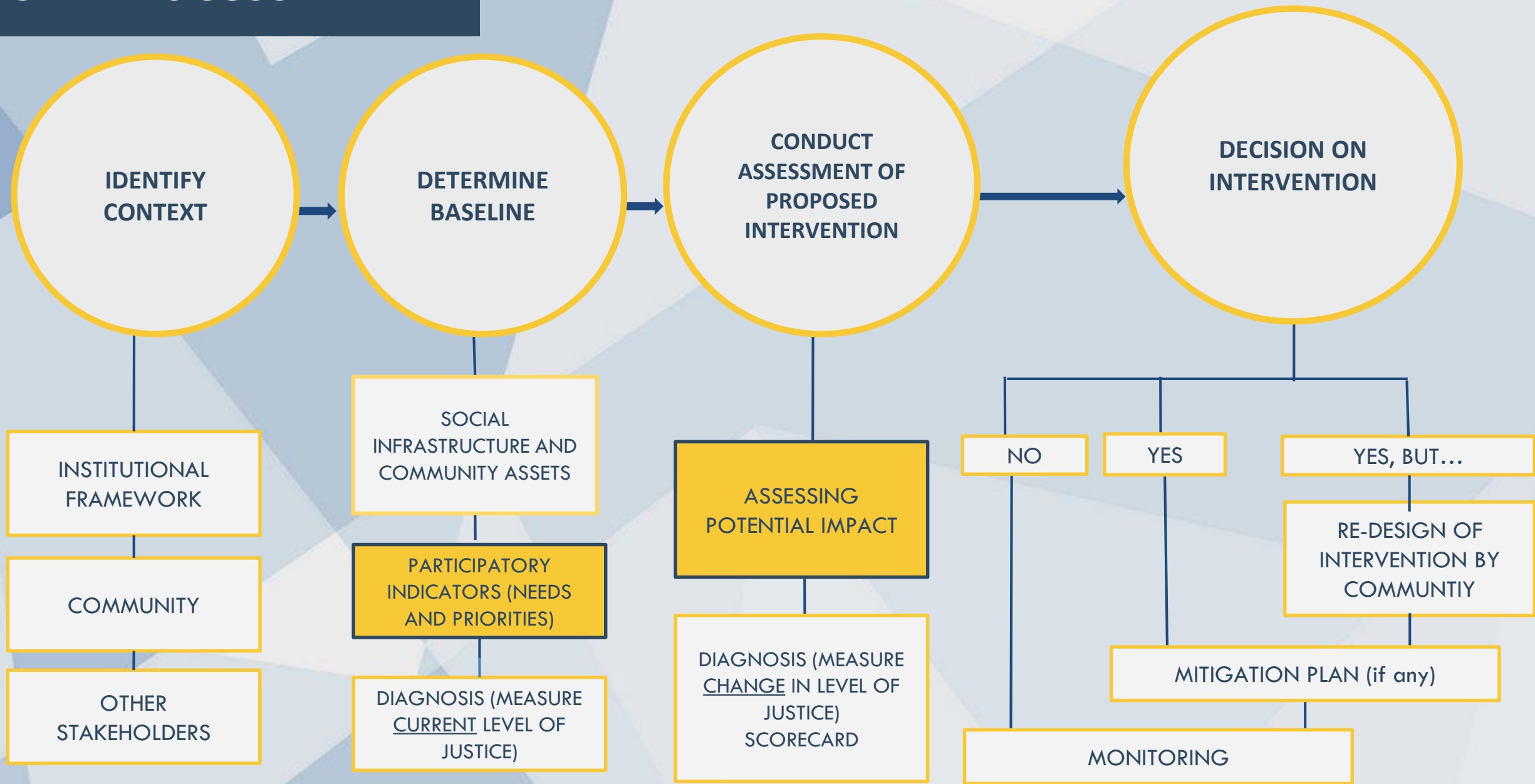
- 1_ Process**
- 2_ Indicators**
- 3_ Measuring & Assessment**
- 4_ Tool in Action - a Comparison**

1_SIA Process

1_SIA Process



1 SIA Process



2_Indicators

2_ SIA-Indicators



Maintenance **Capacity to Remain**

New Housing Provision ● Green Spaces Rent Affordability

Existing Housing Provision **Irreplaceability** **Cultural Identity**

Quantity and Quality of Workspace Employment Support

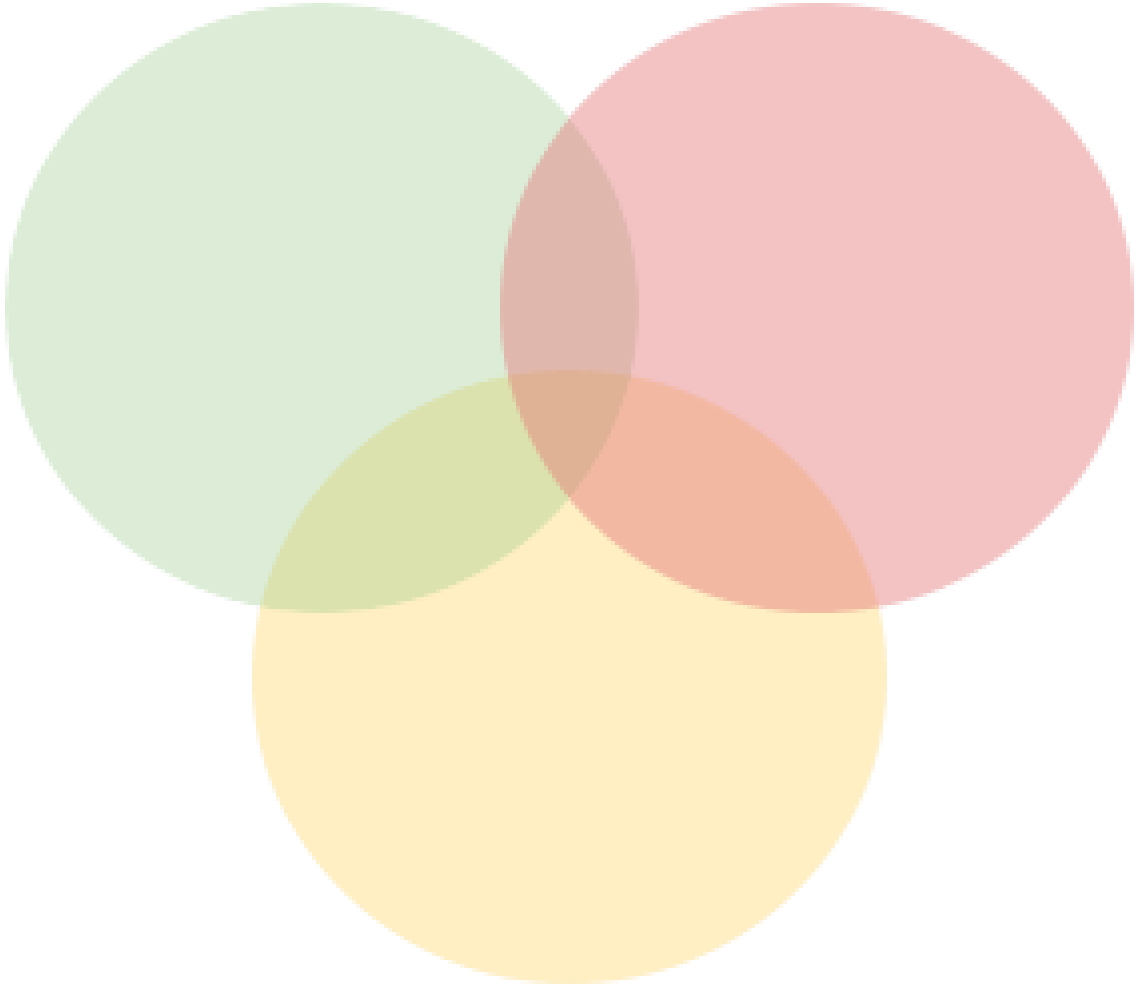
Apprenticeships

Displacement



2_ SIA-Indicators Intersections

Local Businesses and Social Enterprise,
Housing, Community Space



2_ SIA-Indicators

How we built up our SIA tool



2_ SIA-Indicators

Recognition

Activities	Affected people	Social Impact	Indicators	Scale1 - center	Scale 2 - community	Scale 3 - borough
respect diverse cultures through food activities	minority groups	Vitalise traditional food culture	<ul style="list-style-type: none"> • whether still stick to <u>traditional way of eating, cooking, and buying traditional food</u>; • <u>frequency of these lifestyles</u> 		✓	
		enrich local diversity and culture	<ul style="list-style-type: none"> • <u>Diversity of participants in community events and activities.</u> 		✓	
			<ul style="list-style-type: none"> • Self-perception of <u>the respect and encouragement of their culture in local area</u> 		✓	

3_Assessment

3 Measuring Indicators

Which dimensions?

Homes that meet needs

Which indicators?

Proximity to one's family

Which scores?

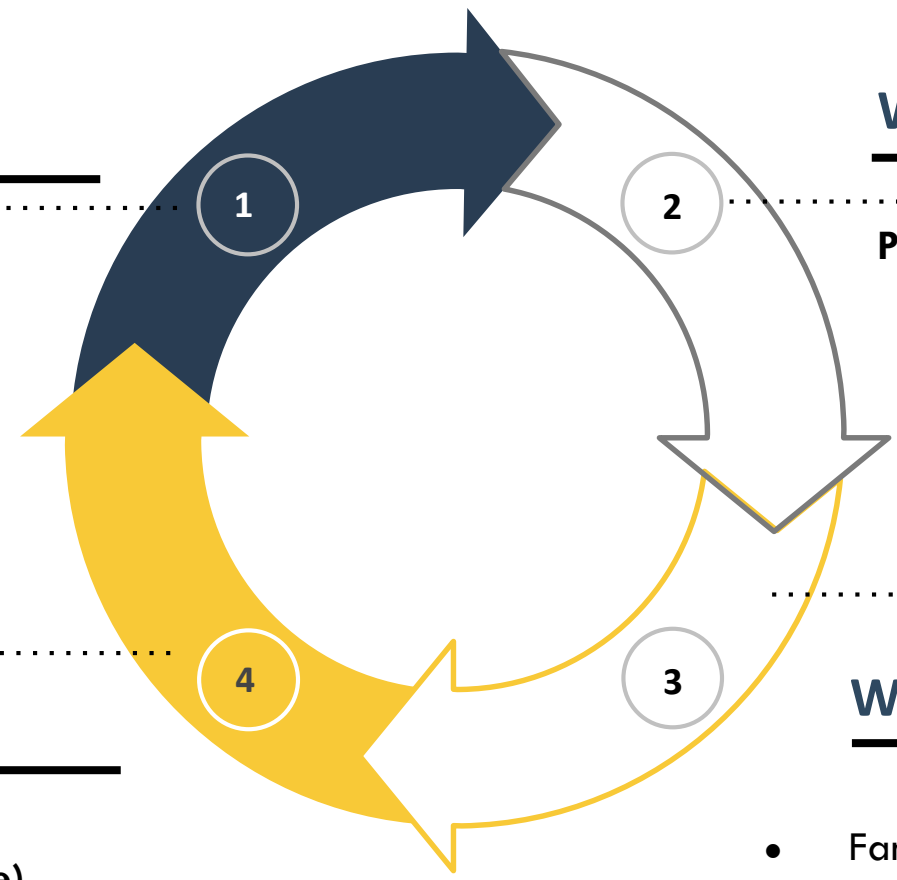
Which data?

Scoring for:

- **Current situation (baseline)**
- **Future situation (impact)**

- Family members within shouting distance (**Count**)
- Average distance between family members (**Average**)

Impact Score: The difference between the current score and the projected score of the intervention.



3 SIA Scorecard

A decision-making tool...

Generating:

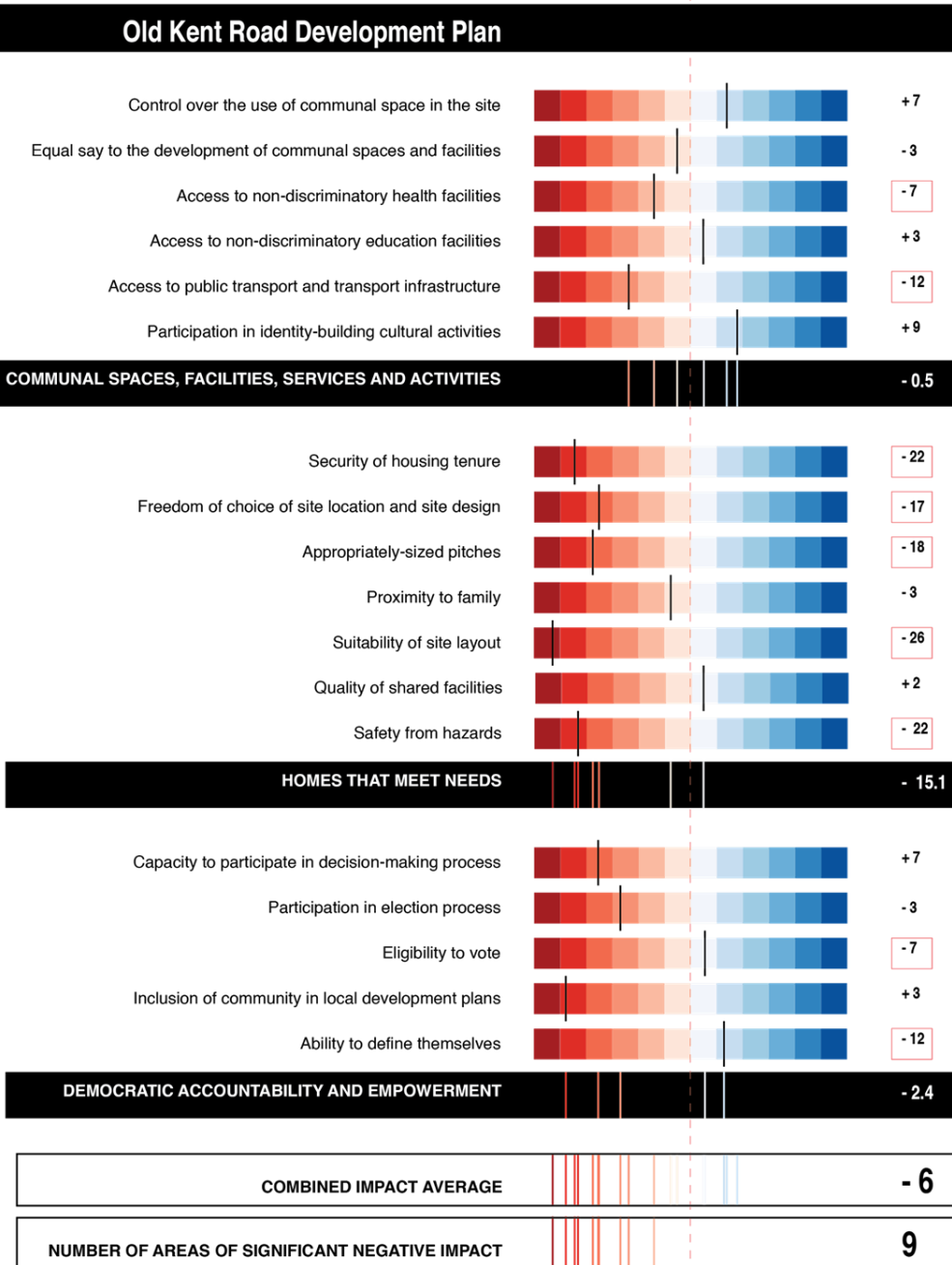
- a **combined impact score**
- the number of **areas of significant negative impact**

...informed by the community

Prior to assessment and depending on the needs of the community concerned:

- a different **weighting of the indicators** can be applied
- the **most crucial areas of impact** can be identified

SOCIAL IMPACT ASSESSMENT



4_ Tool in Action - a Comparison

4_Tool in Action - a Comparison

HOUSING

- 14% affordable housing
- Affordable = 80% of market value
- Limited housing typologies
- Homes sold on open real-estate market

- 100% affordable housing
- Affordable = No more than 1/3 of household income spent
- Larger range of housing typologies
- 75% rented and 25% sold

HEALTH

- Decreased NHS health services
- Car-oriented

NHS PLAN



StART PLAN



- Integrated social prescribing approach to health
- Healthy transport options

ENVIRONMENT

- Limited understanding of role environment plays in the overall wellbeing of individuals

- Opportunities for residents to engage with green spaces

DIVERSITY

- Higher likelihood of changing social and cultural makeup of community through introduction of new social classes
- Less connected to local characteristics and interests

- Lower likelihood of changing social and cultural makeup of community through introduction of new social classes
- Local characteristics and interests central to plan

thank you