



**The Bartlett School
of Architecture**
Part 3 and Professional
Studies courses 2022



The Bartlett School of Architecture

Part 3 and Professional Studies courses 2022



Analogous Mechanism
for Tidal Measurement,
Nicholas Salthouse, 2017

The Bartlett School of Architecture Professional Studies Courses 2022

- **Part 3 (ARB/RIBA) Part 3
Lecture Series**
- **ARB Prescribed Examination
guidance workshops**
- **Stage 2 PEDR monitoring**
- **Continuing Professional
Development (CPD)**

About The Bartlett

The Bartlett School of Architecture is internationally renowned for award-winning, innovative research and teaching that is academically rigorous, critically informed, design-led and interdisciplinary.

We have been teaching architects for over 175 years and are currently ranked number one in the world for architecture and built environment subjects in the QS World University Rankings. We've also been voted the best school of architecture by the Architects' Journal AJ100 for fifteen consecutive years.

Introducing our Courses

We have prepared hundreds of candidates for their Part 3 qualification and enjoy an established reputation for outstanding results and excellent employment opportunities.

Candidates are taught by experts and practitioners, with a choice of teaching pathways (11, 17 or 23 months). Teaching and assessments are varied, including lectures, tutorials and group work assessed by essays, presentations and open-book exams. We offer candidates networking opportunities with some of the capital's top architecture practices and support them throughout their development with career advice.

The Bartlett School of Architecture

Part 3 and Professional Studies courses 2022



Analogous Mechanism for Tidal Measurement, Nicholas Salthouse, 2017

The Bartlett School of Architecture Examination in Professional Practice in Architecture – Part 3 (ARB/RIBA)

The Bartlett Part 3 course is available as an ARB/RIBA award for candidates with Architecture Parts 1 and 2 from a UK institution or with equivalent overseas qualifications.

The course prepares candidates for the Part 3 examination that is recognised by the Architects Registration Board of the United Kingdom (ARB) as the final qualifying test to achieve statutory registered status as a UK architect. It is also validated by the RIBA for the purposes of Chartered Membership. The course addresses the core content of the Professional Criteria, as well as examining broader current professional issues.

In 2022 the part time course will be delivered online with some blended delivery subject to Government and UCL guidelines. It can be taken as a flexible coursework-based pathway over 11, 17 or 23 months.

All Part 3 candidates attend a series of online lectures, covering UK practice and professional criteria, which runs from February to June and is given by leading professionals and experts in their field. The lectures are normally scheduled to begin at 18:00 on Tuesday evenings with occasional full-day themed sessions.

Candidates on the Part 3 Pathway attend the lecture series and follow 3 coursework units, which cover the ARB/RIBA professional criteria: Professionalism, Clients, Users and Delivery of Services, Practice Management, Building Procurement, Legal Frameworks. The type of coursework submitted for assessment is varied, ranging from a short essay, group presentations, office-based coursework, to short answer open-book online assessments. On passing the coursework units, candidates then submit a Professional Practice Portfolio comprised of a Critical Analysis Report (case study), a Professional Development Appraisal and Records of Work Experience/RIBA PEDRs. Candidates then have a final oral examination with two professional examiners, in either July or December.

All candidates on the Part 3 course receive up to four one-to-one tutorials with a dedicated Professional Studies Advisor to guide them through the preparation of the Professional Practice Portfolio. Candidates are expected to undertake self-directed learning, participate in group work, peer learning and review.

The course commences in February each year, and applications open from the previous October. Applications will be reviewed to check eligibility, review work experience, and identify potential case study topics, and, if accepted, will be assigned a Professional Studies Advisor and who will agree a timetable for a programme of work. Further details are available online at www.ucl.ac.uk/bartlett/architecture/programmes/professional-studies
The Bartlett Part 3 course fee is £3,750, which can be paid over three instalments.

Part 3 Lecture Series as standalone CPD

The lecture series focussing on UK and International practice and offering a certificate of attendance is available to International/ EU-registered architects and suitably qualified applicants wishing to register their existing qualification with the ARB to practice in the UK.

The lecture series can be taken as a standalone CPD course for registered architects, returners to the profession and others in allied construction or creative arts industries who are keen to expand or update their professional knowledge. Further details are available online at www.ucl.ac.uk/bartlett/architecture/programmes/professional-studies
Lecture only course fee (2022): £1,500

Stage 2 PEDR Monitoring

For those not wishing to take Part 3 immediately following Part 2, this course provides the supervision and monitoring of professional experience contributing to the professional experience requirement of ARB/ RIBA. Candidates have the opportunity to meet one of our advisors for guidance and submit the quarterly PEDR sheets for signature. Further details are available online at www.ucl.ac.uk/bartlett/architecture/programmes/professional-studies
Stage 2 PEDR Monitoring fee (2022) is £300

Continuing Professional Development (CPD)

In addition to the evening lecture series, we offer themed lecture days on subjects such as planning and contracts (e.g RIBA, JCT, NEC). Fees vary according to the particular event. Please contact the Professional Studies Office for further details.

Applications

Application forms for the Part 3, Lecture Only, Stage 2 PEDR Monitoring and Year Out courses are available on The Bartlett's website or search Bartlett Professional Studies online.

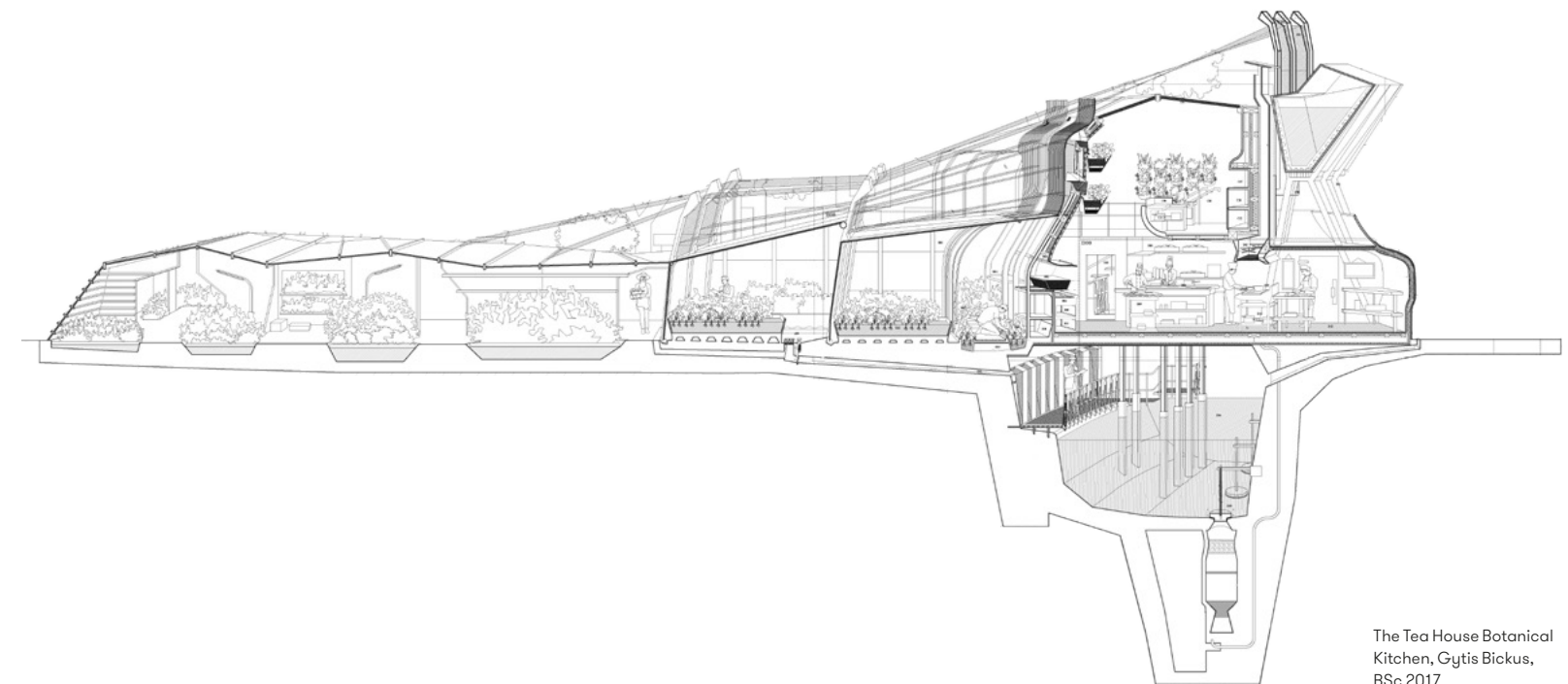
Part 3 applicants should be aware that applications must be accompanied by a CV and a 300-word case study proposal.

All applicants should be aware that our courses are professional, and not academic courses, and therefore do not confer UCL student status.

Applicants will need to provide evidence of their right to work in the UK for the duration of the course.

Language Requirement

Examiners expect candidates to have a high standard of written and spoken English. Applicants whose first language is not English may be requested to provide recent evidence that their command of spoken and written English is adequate for their course.



The Tea House Botanical Kitchen, Gytis Bickus, BSc 2017



Professional Studies Office
The Bartlett School
of Architecture, UCL
22 Gordon Street
London WC1H 0QB

+44 (0)20 3108 9663
Bartlett-Part3@ucl.ac.uk