

LONDON'S GLOBAL UNIVERSITY



UCL

Review 2008



Research Highlights	2
Global	8
London	10
Teaching & Learning	14
Highlights 2008	17
Awards & Appointments	21
Enterprise	26
Finance & Investment	29
Professorial Appointments	34
Professorial Promotions	35
People	36
Leadership	37

Design studiospecial.com
 This publication was printed on recycled paper using only vegetable-based inks. All paper waste from the manufacturing of this publication was recycled and reused



UCL – London’s Global University

We are

- a world-class centre of research and teaching, dedicated to developing and disseminating original knowledge to benefit the world of the future.

We believe

- in engaging fully with the world around us
- in breaking new ground through challenging convention
- in progress through partnership.

We value

- creativity and innovation
- independent thought
- integrity
- energy
- perseverance.

We are committed

- to the pursuit of excellence and sustainability
- to maintaining rich academic diversity embracing the Arts and Sciences
- to equality of opportunity and fulfilment of potential for all our staff and students.

We strive always

- to lead
- to inspire
- to achieve.



Welcome to UCL's annual review for 2008, which I hope will give you a sense of what we have achieved in the past year, and of our future aspirations.

It has certainly been an exciting year. We launched our new research strategy, which aims to deliver results through a robust, responsive and evidence based approach. We are already recognised as Europe's most-cited university, and I believe that the strategy will extend the reach of our research yet further.

It does this in a radical way. Building on our strengths across the range of disciplines represented at UCL, it develops an institution-wide view of our capability to tackle the world's most pressing problems by cutting across traditional boundaries and focusing on global impact.

An important aspect is our commitment to forging effective relationships with other partners, who can strengthen and expedite how we translate academic expertise into tangible applications in a variety of fields; and 2008 has witnessed many important developments in this regard.

For example, we are developing a partnership with four of London's world-class hospitals to establish Europe's largest Academic Health Science Centre, through which we will strengthen research, teaching and clinical service through an integrated approach to structure, organisation and funding.

We have also developed a novel partnership in one of the most exciting initiatives in medical research for a generation – the new UK Centre for Medical Research and Innovation (UKCMRI). With our partners, Cancer Research UK, the Medical Research Council, and the Wellcome Trust, we are currently developing the physical design and the scientific strategy for the centre, which is expected to open at St Pancras in 2014.

Our partnerships in teaching and learning also extended their reach both globally and locally in 2008. In December, we signed the final agreement to establish a campus in Adelaide; the new UCL School for Energy and Resources will offer UCL's first-ever overseas degree programmes in autumn 2009. We also became the first European university to partner with iTunesU, to provide an important, publicly available teaching resource through video and audio podcasts.

UCL's excellence received many independent endorsements. Our ranking rose in the two main global league tables: the Shanghai Jiao Tong, and the Times Higher QS World University rankings, where UCL is now ranked seventh in the world.

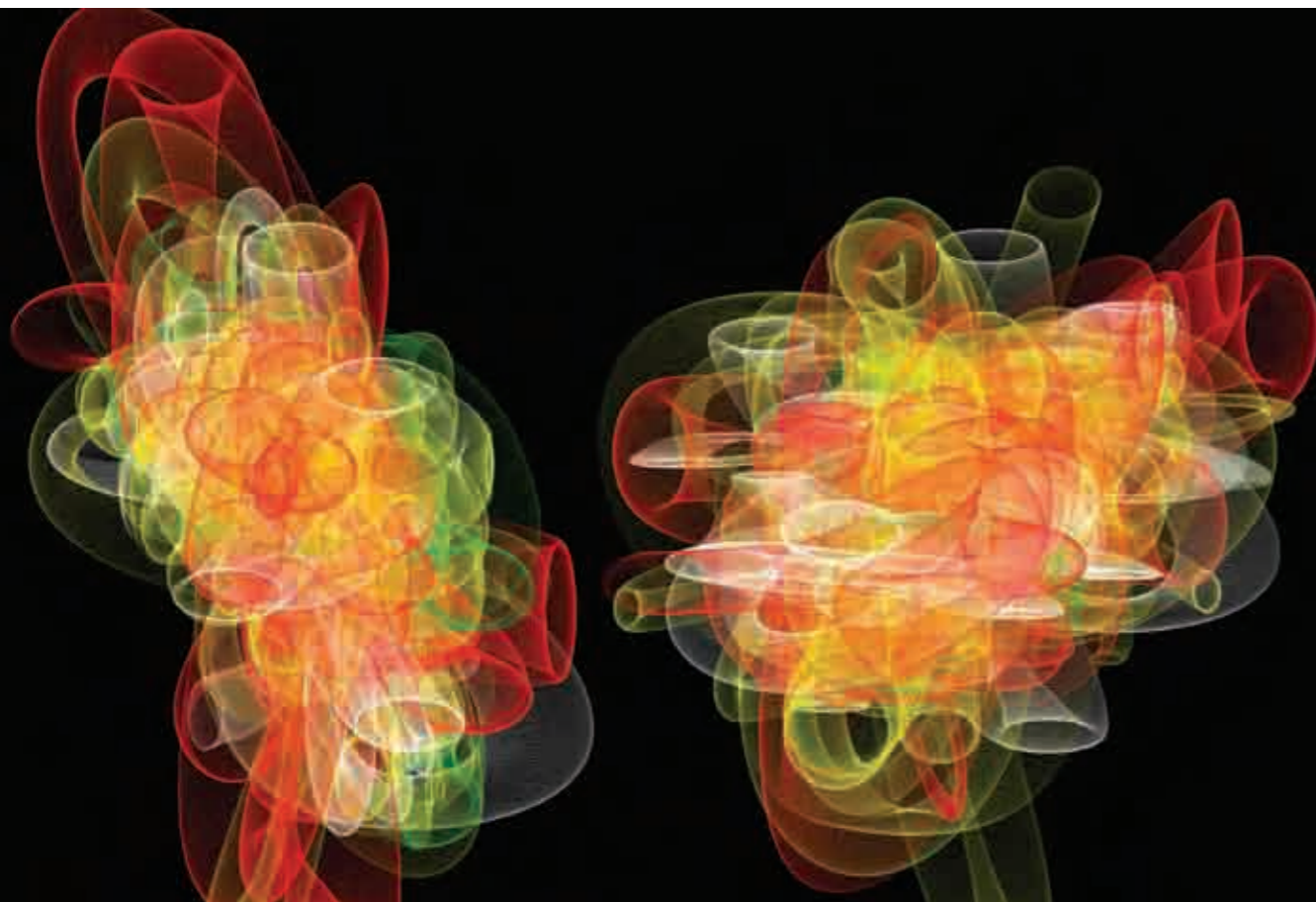
The longest-awaited announcement of the year, however, must have been the outcome of the 2008 Research Assessment Exercise (RAE). We could breathe a collective sigh of relief: UCL was rated the best research university in London, and third in the UK overall for the number of its submissions which were considered of 'world-leading quality'. The RAE confirmed UCL's multidisciplinary research strength with outstanding results achieved across the faculties, including Architecture, Economics, Laws, Medicine and Philosophy.

The future looks exceptionally challenging. We cannot expect to be immune to the effects of the global economic recession. There is less money in the system, and research and funding council income may fall as resources are spread more thinly. The international market downturn is likely to affect UCL in many ways, including a fall in the value of UCL's endowment, and the risk of a decline in the number of overseas students who enrol in UCL for the next academic year.

In the spirit of UCL's White Paper for 2007–2012, I believe that the way ahead is through coherent and united effort. We will maintain a disciplined approach to spending and budgeting in order to survive these straitened economic circumstances.

At the same time, it is crucial to continue to strengthen UCL's academic excellence, and maximise our positive impact on the world. I invite you to sample the highlights of the past year in the following pages.

Professor Malcolm Grant
(UCL President and Provost)



2008 was the first full year of our implementation of the new UCL Research Strategy, a bold and ambitious commitment to maximise our global impact.

UCL is already a research powerhouse, working across the full spectrum of academic disciplines. During 2008, UCL's rating as the most-cited university in the Europe, and our outstanding RAE results, which placed us as the best research university in London, were two important indications of our multidisciplinary research might.

As well as possessing outstanding strengths in the core academic subject areas, UCL is working to cross boundaries between disciplines, and to forge new partnerships, maximising the impact of our research. The opening of new cross-disciplinary centres in 2008; UCL's groundbreaking biomedical partnerships through UCL Partners and the UKCMRI – these are ways in which UCL is shaping itself to new possibilities and to greater impact.

The Research Strategy outlined an important vision for 2008 and beyond. The excellence, breadth and scale of our research, in combination with our location in London, provide both the opportunity and the obligation to address the world's major problems.

These problems are complex and systemic, and their resolution will only come about by harnessing our collective expertise – working across and beyond traditional disciplines – and applying it to what we call the Grand Challenges: initially Global Health, Sustainable Cities, Intercultural Interaction and Human Wellbeing.



Professor David Price
UCL Vice-Provost (Research)

'Family Portrait' by Mr Vlad Tenu (UCL Bartlett School of Architecture), runner-up in the 2008 Research Images as Art / Art Images as Research competition

£40 million EPSRC funding for Centres for Doctoral Training

UCL has won funding for seven Centres for Doctoral Training – more than any other university – that will 'generate the scientists needed for Britain's future', it was announced in December by the Engineering and Physical Sciences Research Council. The multidisciplinary centres bring together diverse areas of expertise to provide engineers and scientists with the skills, knowledge and confidence to tackle today's evolving issues. They also create new working cultures, build relationships between teams in universities and forge lasting links with industry.

Centre for Transnational History launched

The new Centre for Transnational History was launched at UCL in October 2008. 'Transnational' history is the study of historical processes above and beyond the structures of states and nations, as well as comparative history from the ancient to the contemporary world. The centre provides a forum for research and graduate training in the field across UCL departments and facilities. It will support individual and collaborative research into transnational history, offer an institutional framework for graduate studies and will host a programme of seminars, lectures and events.

UCL top-cited in Europe

UCL is the most-cited university in Europe, and up one place from the last analysis to 13th in the world, according to data released by the ISI Web of Knowledge's Essential Science Indicators in April. The number of citations generated by academic publications is an important indication of institutional importance and influence. The ISI report covered citations in 21 subject areas. The results revealed key UCL strengths in the following ISI categories: Clinical Medicine, Immunology, Neuroscience & Behaviour, Pharmacology & Toxicology, Psychiatry/Psychology, and Social Sciences.

Centre for Philosophy, Justice & Health

A new Centre for Philosophy, Justice & Health was created at UCL in November, set up as a partnership between many UCL departments, including Epidemiology, Laws, the Medical School Philosophy, and Political Science, with the aim to provide a UCL-based focus for research into distributive justice and health. The launch conference for the centre included addresses by Professor Jonathan Wolff, the centre's Director and Professor of Philosophy at UCL, and Professor Sir Michael Marmot (MRC Research Professor of UCL Epidemiology & Public Health).

Health inequalities in England

UCL's Professor Sir Michael Marmot is to lead a major government review of health inequalities in England. Secretary of State Alan Johnson announced the review at a two-day conference in November. Sir Michael, who also chairs the World Health Organization's Commission on the Social Determinants of Health, will help the Department of Health to establish new targets for tackling inequalities up to 2020. He will draw on the Commission's 2008 report into the social determinants of health, which gave its name to the conference.

Sustainable Energy Management and the Built Environment

The results of another major government report led by a UCL academic were published in November; in this case outlining how human spaces can be adjusted to provide a greener environment. The report is the product of intensive work conducted between 2006 and 2008 by a group of Lead Experts chaired by Professor Yvonne Rydin, Professor of Planning, Environment & Public Policy at the UCL Bartlett School of Planning and Co-Director of the UCL Environment Institute. Entitled 'Powering Our Lives: Sustainable Energy Management and the Built Environment', the report looks at how the UK's buildings

and spaces will need to evolve to help cut carbon emissions, proposing a number of changes which could be introduced over the next 50 years.

Object handling: therapeutic potential

Dr Helen Chatterjee (UCL Genetics, Evolution & Environment and UCL Museums & Collections), and Dr Anne Lancelley and Dr Usha Menon (researchers in Gynaecological Oncology at the UCL Institute for Women's Health) won a grant of almost £300,000 from the Arts & Humanities Research Council to research the therapeutic potential of object handling in hospitals and other healthcare settings. Working with institutions across London, their project is designed to lead to an understanding of the potential and value of taking handling collections from museums, libraries and archives into hospitals and other healthcare organisations.

£4.2 million Medical Research Council funding

UCL was awarded eight out of 20 available grants made by the Medical Research Council (MRC) to fund research to develop better models of human disease – worth an estimated £4.2 million to the university. Available to applicants across the UK, the awards equip the successful grant holders to look at a wide range of diseases, including diabetes, stroke, heart disease and age-related macular degeneration. The awards are one component of a strategic initiative to target bottlenecks in translational research, as part of the MRC's Translational Research Strategy.

Wellcome Trust funding for genome-wide association studies

The UCL Institute of Neurology was awarded two major grants worth more than £2 million from the Wellcome Trust, as part of its £30 million follow-up to last year's Wellcome Trust Case Control Consortium, the largest-ever study of the genetics behind common diseases.

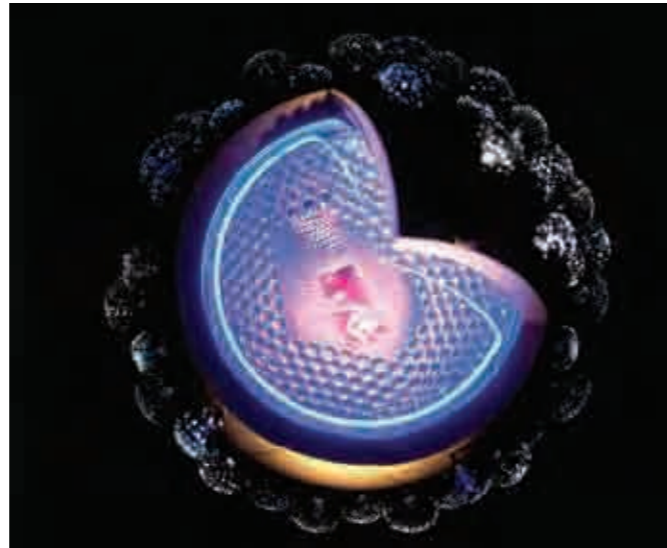
Professor John Collinge, Head of UCL Neurodegenerative Disease, and his team were awarded £897,000 over 18 months to further their genome-wide study of human prion disease, while Professor Sanjay Sisodiya (UCL Clinical & Experimental Epilepsy) was awarded £1.375 million over three years for 'genome-wide association studies in partial epilepsies'.

Leverhulme Trust Fellowships

Dr Wendy Bracewell (Deputy Director, UCL School of East European & Slavonic Studies) and Dr Ardis Butterfield (UCL English) both won prestigious Major Research Fellowship from the Leverhulme Trust during 2008. Dr Bracewell's fellowship is to pursue research into East European travel writing and the invention of Europe. The project analyses a rich array of 18th to 21st century travel accounts to ask what Europe and being European has meant to Eastern Europe. Dr Butterfield's fellowship is for reuniting medieval song lyrics with their original manuscript settings in a unique edition of early English songs, revealing that the concepts of 'sacred' and 'profane' have changed in poetry and music over the past 500 years.

Royal Assent for Laws professor's recommendations

During a year when the role of business regulation came under heavy public scrutiny, Professor Richard Macrory (UCL Laws) saw his set of recommendations on regulatory reform passed into law – just two years after submitting his report. The Regulatory Enforcement and Sanctions Act received Royal Assent, providing new framework powers for regulators and local authorities throughout England and Wales. Professor Macrory developed a set of six principles that should underlie a modern regulatory sanctioning system – and which are now known as the 'Macrory Principles'. In the same year, Professor Macrory was made an Honorary Queen's Counsel for his work on the development of environmental law.



Cutaway model of HIV virus
Image: John Wildgoose

Focus on: HIV research at UCL

2008 saw breakthroughs in many areas of HIV research at UCL. Below are some of the results and ongoing projects in this subject area.

In January a study led by Professor Peter Coveney (UCL Chemistry), published in the 'Journal of the American Chemical Society', demonstrated how the combined supercomputing power of the UK and US 'national grids' has enabled UCL scientists to simulate the efficacy of an HIV drug in blocking a key protein used by the lethal virus. The method – an early example of the Virtual Physiological Human in action – could one day be used to tailor personal drug treatments, for example for HIV patients developing resistance to their drugs.

UCL scientists identified a combination of genes in a species of monkey that protects against retroviruses such as HIV, published in the 'Proceedings of the National Academy of Sciences' in February. The discovery, led by Professor Greg Towers (UCL Division of Infection & Immunity), will be used to develop a gene therapy for HIV/AIDS in humans, and is a significant step in understanding how retroviruses can move between species and the biological mechanisms behind the 'jumping genes' that make some monkeys immune to them.

In July, Professor Robin Weiss and Dr Ed Wright (UCL Division of Infection & Immunity) co-authored a paper published in 'Cell Host & Microbe' identifying a genetic variation that makes many people of African descent more susceptible to HIV. The discovery marks the first genetic risk factor for HIV found only in people of African descent, and sheds light on the differences in genetic makeup that play a crucial role in susceptibility to HIV and AIDS.

In the same month, Professor Deenan Pillay (UCL Division of Infection & Immunity) received notice of a successful bid for funding from the European Commission for a major international collaborative HIV/AIDS research project. Under the Commission's 7th Framework Programme, €10 million have been awarded to CHAIN (the Collaborative HIV and anti-HIV Network), a programme encompassing 23 partners across Europe and Africa.

In October, Professor Benny Chain (UCL Immunology) gained support from the Gates Foundation for his research into an alternative strategy to develop a novel vaccine that can prevent HIV infection.

patients and believe they will be able to improve their output by working together in this way.

UCL moved forward with the development of the UK Centre for Medical Research and Innovation (UKCMRI). The UKCMRI brings together UCL experts with colleagues from Cancer Research UK, the Medical Research Council and the Wellcome Trust in a state-of-the-art facility to be built in Somers Town, on land behind the British Library. The UKCMRI aims to deliver exceptional research and to train tomorrow's scientists, and is expected to open in 2014.

In August, the leading architecture practice HOK was commissioned to build the UKCMRI headquarters, following a worldwide selection process. Meanwhile, academics developed the UKCMRI's scientific vision through a Science Planning Committee chaired by Sir Paul Nurse, President of Rockefeller University in New York. UCL is represented on the committee by Professor Ed Byrne and Professor Claudio Stern.

The collaborations which UCL is developing and deepening through UCL Partners and UKCMRI are with partners with which UCL has worked fruitfully over many years. There are examples of UCL's work with hospitals, research councils, charitable trusts and foundations throughout this report.

UCL in partnership

Partnership was a major theme for UCL in 2008, as the university took steps to maximise the potential of its research through two groundbreaking biomedical collaborations.

In September, Europe's largest Academic Health Science Partnership was launched, with UCL and four of its major hospital partners coming together to form a partnership through which medical research can be better planned and delivered.

UCL Partners brought UCL together with Great Ormond Street Hospital for Children NHS Trust, Moorfields Eye Hospital NHS Foundation Trust, the Royal Free Hampstead NHS Trust and University College London Hospitals NHS Foundation Trust. Professor Sir Cyril Chantler was appointed Chair of UCL Partners in November and will move into office during 2009.

By pooling resources and expertise, UCL Partners will treat over 1.5 million patients every year and support over 3,500 scientists, senior researchers and NHS consultants, with a combined annual turnover of around £2 billion pounds. The partners have an outstanding reputation for research and delivery of services to



Laboratories at the UCL Ear Institute

RAE 2008 – Multidisciplinary excellence

In the outcome of the 2008 Research Assessment Exercise (RAE) UCL was rated the best research university in London, and third in the UK overall, for the number of its submissions which were considered of 'world-leading quality'. The RAE confirmed UCL's multidisciplinary research strength with outstanding results achieved in Biomedicine, Engineering Sciences, Built Environment, Laws, Social Sciences, Arts & Humanities. Heads of some of the leading subject areas commented on the results:

**Professor Christine Hawley,
Dean of the UCL Faculty of the Built
Environment**

"We are thrilled that the research of the UCL Bartlett has been rated as one of the top submissions within the Architecture & Built Environment section of the RAE. We believe that this result reflects not only the truly excellent quality of our research activities, but also the unique advantage of offering a comprehensive spectrum of expertise in this field, ranging from energy and environment, history and heritage, management and space, to architectural and urban design."

**Professor Ed Byrne, Dean of the UCL
Faculty of Biomedical Sciences:**

"The new RAE results confirm that UCL is the strongest medical research university in the United Kingdom. This is evidenced by the number of 4* researchers and the total number of 4* and 3* researchers, as well as by its research power (the average research score multiplied by the volume of staff submitted for the assessment), for which it was ranked significantly higher in the Biomedical and Life Sciences categories than any other UK university. This reaffirms both the depth and breadth of biomedical research at UCL as certainly the strongest in the UK."

**Professor Anthony Finkelstein,
Head of UCL Computer Science:**

"We are elated with our success in the RAE, which reflects efforts by colleagues over a substantial period. We have improved our standing with respect to competitor institutions, who have also substantially upped their game. The result is in large part attributable to work across disciplinary boundaries with UCL colleagues, industrial collaborators and other computer scientists internationally, and our success is shared with them."

**Professor Steffen Huck,
Head of UCL Economics:**

"We are genuinely delighted about the RAE outcome which recognises UCL as a world leader in economic research. The outcome is particularly pleasing as we submitted well over 90% of all eligible staff – a submission percentage that compares very favourably with our competition and that truly reflects the excellence of all our staff."

**Professor Nicola Miller,
Head of UCL History:**

"It is a great pleasure to see that the History panel has classified 40% of our work as 'world-leading' (4*). This was the highest percentage awarded by the panel, and it went to only two other universities. This result is a tribute to the outstanding research of all my colleagues in the History Department, the Wellcome Trust Centre

for the History of Medicine, and the Department of Science and Technology Studies. It also shows the increasing value of collaboration between them."

**Professor Dame Hazel Genn QC,
Dean of UCL Laws:**

"I am delighted that the outstanding research activity of UCL Laws has been acknowledged in this way. It is a credit to all members of academic and support staff whose excellence is recognised in this result."

**Professor Tim Crane,
Head of UCL Philosophy:**

"We are delighted that the research excellence of our department has been recognised by the RAE panel. No other philosophy submission in the UK had 45% of its research activity rated as 4*. I congratulate my colleagues, both in Philosophy and in Science & Technology Studies, on this fine achievement."

**Professor Ann Blandford,
Director of the UCL Interaction Centre:**

"UCL's strength in interdisciplinary research is reinforced by these results. The UCL Interaction Centre's research bridges Computer Science and Psychology, both of which are recognised as being among the top submissions in their respective units of assessment in the RAE."

UCL Grand Challenges

In 2008 UCL developed an institution-wide programme to fulfill our promise as one of the world's leading research-intensive universities. Implementation of the new UCL Research Strategy involves integrating our collective expertise and focusing it on resolving the world's profound problems.



UCL identified areas where UCL's critical mass and research excellence can deliver novel achievements and in which new interdisciplinary partnerships can thrive. We call these the Grand Challenges. They are global in significance and draw on our expertise across all faculties: the Arts & Humanities, Biomedical Sciences, Built Environment, Engineering Sciences, Laws, Life Sciences, Mathematical & Physical Sciences, and Social & Historical Sciences.

UCL embraces and celebrates the outstanding problem- and curiosity-driven research conducted by individuals and small groups in these subject areas. However, the university recognises that we can only address the world's major problems by transcending the boundaries between academic disciplines: by bringing together the diverse insights, creativity, perspectives and procedures of – for example – anthropology, environmental law, history, materials science, neuroscience, philosophy, security studies, transport, and urban planning.

The Grand Challenge of Global Health

In 2008, UCL addressed the first Grand Challenge: that of Global Health. UCL has a strong international profile in the major disciplines that are key to addressing barriers to sustainable improvement in global health, such as anthropology, biomedicine, the built environment, climatology, development planning, economics, human rights, laws and political science. At UCL, these disciplines collaborate with the thousands of other expert individuals at the very forefront of their own disciplines – from art to transport studies, computer science to gender studies, environmental engineering to linguistics.

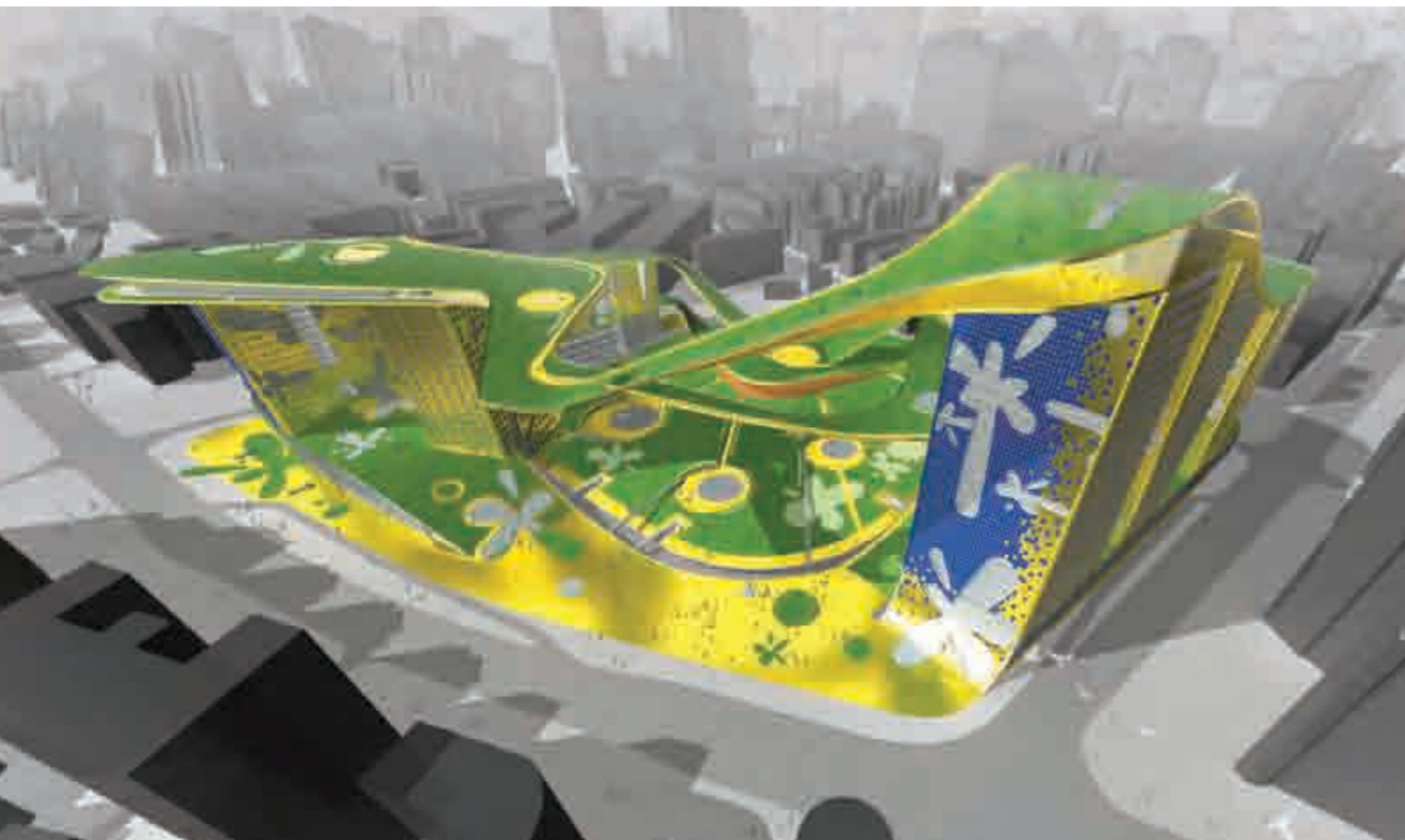


Vaccinating children, Rio de Janeiro, 1971

The UCL Institute for Global Health (IGH) is the mechanism through which that breadth of expertise is being rallied and focused. In 2008 it progressed work on six themes: Education, Outreach & Capacity-Building; Health Effects of Climate Change; Infectious Diseases; Maternal & Child Health; Non-Communicable Diseases; and Politics, Policy & Justice.

The UCL IGH facilitated a series of challenging and stimulating multidisciplinary global health symposia with colleagues across the university, policymakers and members of the broader community, exploring controversial subjects related to the barriers to long-term health improvement. The breadth of our approach was reflected in the symposia's subject matter; they ranged from 'Global Health: What's justice got to do with it?' to 'Public Inconvenience: The politics of toilets in India', and 'Global Health Governance: Who is accountable to whom?' to 'Human Rights & Disability: The missing 10% of the world's population'.

UCL and 'The Lancet' launched a joint commission to report in 2009 on managing the human health effects of climate change – an area often overlooked in the climate change debate. Chaired by Professor Anthony Costello (UCL IGH), the Lancet-UCL Commission reviewed the likely health impacts of climate change on human societies, and documented ways to manage those impacts, with membership drawn from departments and centres with a wide range of expertise and experience.



2008 was a very significant year, because we decided to move into offshore campuses. We signed an agreement with the State of South Australia to set up the UCL School of Energy & Resources in Adelaide, and staff will start to set up the campus and to teach professional courses from April 2009.

We want to have a physical presence overseas, but in a particular way which is different from other universities: ours will be small 'boutique' campuses which are research-led, at the postgraduate level and triangulated between government, industry and the university.

One in four of our students spends at least a term overseas – the highest on record – and we are encouraging more each year. They come back understanding different cultures, different ways of working and how to cope on their own – all vitally important as most of them will work across linguistic and national boundaries in the future.

Nan Yui Shopping Park, China. Professor CJ Lim (The Bartlett Professor of Architecture and UCL Pro-Provost for North America)

At the same time, we've prioritised globalisation at home under our Global Citizenship Umbrella. This is about mobilising the vast differences that we have in our student and staff populations, who come from 140 countries. We have some wonderful examples of how individual departments are internationalising the curriculum, drawing on methodological differences in teaching, learning and researching across the world to make studying at UCL a global experience in London.



Professor Michael Worton
UCL Vice-Provost (Academic & International)

Adelaide campus

UCL is establishing its first overseas degree programme at the UCL School of Energy & Resources in Australia. The Adelaide campus, to be opened in 2009, is the result of a deal struck between UCL and the Government of South Australia, with substantial support from Australian energy company Santos. Students will be able to study for a two-year masters in energy and resources from next year. Joint research programmes between Adelaide and London will be developed and London staff will be invited to teach on both campuses.

Overseas visitors

Many overseas visitors graced the UCL campus in 2008. In December, the university welcomed the Hon Mike Rann MP, Premier of South Australia, to mark the establishment of the UCL School of Energy and Resources in Adelaide. Her Majesty Queen Beatrix of the Netherlands came to launch a book, translated by Jane Fenoulhet, Senior Lecturer in Dutch at UCL. UCL also enjoyed events attended by such notables as Chair of political party Pakistan Tehreek-e-Insaf, Imran Khan; the new French Ambassador to the UK, HE Maurice Gourdault-Montagne; Polish Minister for Finance, Jacek Rostowski; and Nobel-Prize-winning Japanese scientist Susumu Tonegawa.

Chinese State Councillor at UCL

In November, Professor Malcolm Grant, UCL President and Provost, welcomed Madam Liu Yandong, the State Councillor of the People's Republic of China. A delegation including Mr Zhou Ji, Minister for Education for China and the Chinese Ambassador to London, Madam Fu Ying, received a tour of laboratories in the London Centre of Nanotechnology at UCL, and UCL Chemistry. Professor Zheng-Xiao Guo (UCL Chemistry), UCL's Pro-Provost for China, Hong Kong & Macau, arranged the cultural visit.

UCL-China Research Festival

UCL's myriad research collaborations with Chinese institutions were showcased at the UCL-China Research Festival in June. More than 320 people attended the event, which hosted around 30 presentations and poster displays on topics such as architecture and urban planning, psychology and social science, chemistry and space. The day, organised by Professor Moira Yip, UCL Special Adviser on China, ended with a celebratory dinner for 70 guests, among them senior Chinese Embassy officials and UK government representatives. This year will see UCL provide funding for visiting Chinese PhD students for the first time.

New UCL Pro-Provosts

In September, Professor Volker Sommer (UCL Anthropology) became the first UCL Pro-Provost for Africa. UCL created the role to complement its established five international Pro-Provost roles. Assuming the established three-year posts from September were: Professor Zheng-Xiao Guo – China, Hong Kong & Macau; Professor Mike Wilson – Europe; Professor CJ Lim – North America; Professor Derek A Tocher – East & South East Asia; Professor Vince Emery – South Asia & the Middle East.



The Torrens building in Adelaide will house UCL's new campus

European research funding

UCL is taking a key role in major research projects funded by the European Commission's Framework Programme 7 to the tune of almost €19 million. UCL Chemistry is leading the €8 million Virtual Physiological Human Network of Excellence, in which 13 UK, European and New Zealand universities will develop new training structures for people involved in VPH-related science, technology and medicine. €7 million is earmarked for the four-year EURIPIDES project, a UCL Institute of Neurology-led initiative exploring the causes of drug resistance in patients with major neurological conditions. UCL Immunology & Molecular Pathology is steering a €3 million study of Primary Antibody Deficiencies, while UCL Mathematics is coordinating a €617,000 Global Systems Dynamics project.



I was a student at UCL from 1968 to 1971 – exciting times when the world was changing. Today, the opportunities for expanding young people’s horizons are no less present, but the scope of the university’s influence has broadened in tandem. As with the City, the boundaries of education are porous, and I’m impressed with the way that UCL is reaching out to partners in London’s governmental, health, education and cultural sectors, and beyond. Collaborations such as those outlined here are vital to ensure that the benefits of UCL’s expertise and intellectual curiosity are applied to enrich the lives of Londoners such as myself.



Ian Luder
Lord Mayor of London 2008-09
and UCL Economics graduate

Charles Booth’s Descriptive Map of London Poverty, 1889, as featured in Dr Laura Vaughan’s project ‘Mapping the East End labyrinth’ (UCL Bartlett School of Graduate Studies).
Image: Museum of London.

UCL is proud to be the only multi-faculty university in London among the top 10 universities in the world. While our research is internationally renowned and has global resonance, we have a strong responsibility to apply our excellence to enhance London life.

Health

In December 2007, UCL announced governmental support for the UK Centre for Medical Research and Innovation (UKCMRI), a partnership between UCL, the Medical Research Council, Cancer Research UK and the Wellcome Trust to create one of the world’s top medical research centres in the heart of London.

UCL reported on a pioneering mental health screening programme established to identify and treat people affected psychologically by the 7 July bombings. UCL Clinical Psychology had joined forces with academic colleagues and the NHS to invite survivors for treatment. 71% of those who responded were suffering from post-traumatic stress disorder and 200 people were treated.

In April, researchers from the UCL Institute of Ophthalmology and Moorfields Eye Hospital announced successful results from the world’s first clinical trial to test a revolutionary gene therapy treatment for a type of inherited blindness. Following treatment, three patients were tested for improvements in their vision, negotiating their way through a maze in night-light conditions.

In June 2008 two UCL students came top out of all graduating medical students in the University of London. Christopher Lane won the University of London Gold Medal for Medicine and Neil Halliday won the University of London Betuel Prize.

In November 2008, plans for a new £110 million world-leading cancer centre in the heart of London were approved by the University College London Hospitals NHS Foundation Trust (UCLH) Board. The centre, which will be part of UCLH and will collaborate closely with the recently opened UCL Cancer Institute, is due to open in 2012 and will redefine the way in which cancer patients are treated.

“A pioneering project, which started in October 2008, involves identifying members of the Ashkenazi Jewish population in North London at high risk of breast, ovarian and prostate cancer by offering genetic screening in partnership with the high-street chemists Boots. To carry out top-quality work that benefits as many people as possible, it is vital for us to partner with community and healthcare organisations.”

Professor Ian Jacobs

Director of the UCL Institute for Women’s Health and leader of the world’s largest ovarian cancer research project

Government

UCL’s Deafness, Cognition and Language Centre (DCAL) raised awareness of the needs and desires of deaf people, holding the award ceremony for its young persons’ essay competition ‘It’s my future: Being Deaf in 2018’, at the Houses of Parliament in March 2008.

Researchers in the UCL Accessibility Research Group demonstrated their creation ‘DAISY’ to parliamentarians at a House of Commons reception in March 2008. DAISY is a highly accurate positioning system that shows images of locations as well as maps and directions. It is particularly for people with learning disabilities, for whom going out on new journeys and following directions can be a confusing experience.

In the same month, a team of researchers from the UCL Institute of Ophthalmology demonstrated a glaucoma detection tool under development to a group of MPs in the House of Commons. The Moorfields Motion Displacement Test uses a unique software programme to investigate visual field (peripheral vision), one of three recommended assessments used in the diagnosis of glaucoma. It is hoped that the software will be made available for download from the internet, enabling clinicians from all over the world, including those in developing countries, to use it as part of their glaucoma screening systems.

London Mayor Boris Johnson and Conservative Party leader David Cameron visited the UCL Jill Dando Institute of Crime Science for a briefing on the ‘geography of crime’ – the role of geographical factors in bringing together an offender and a target – and how understanding this can improve the way we respond to crime problems and catch offenders.

“The UCL Jill Dando Institute is playing a central role in making London a safer place to live and work. Through our many links and partnerships, our geographical closeness to central Government and the Metropolitan Police, we are uniquely positioned to make a difference. We advise and train London police officers, senior civil servants and leading political figures of all parties. We use the great strength of being part of London’s leading multidisciplinary university by working with specialists in many UCL departments to complement our team.”

Professor Gloria Laycock

Director of the UCL Jill Dando Institute of Crime Science and advisor to the Home Office and the Local Government Association



Dr Beau Lotto's Beacon lights up the streets of Shoreditch, depending on the volume of passers-by

Environment

The UCL Centre for Advanced Spatial Analysis formed a partnership with King's College London to create a 3D interactive air pollution map of London, financed by the British Oxygen Foundation, under the auspices of Air Pollution Research in London at Imperial College. The system shows current pollution levels and predictions through to the year 2010.

Fourth-year students at the UCL Bartlett School of Architecture designed and built temporary mobile performance spaces in May 2008 for an international conference held by the Central School of Speech and Drama discussing sustainable materials for use in theatre design.

Also in May 2008, Dr Laura Vaughan created 'Mapping the East End Labyrinth', a website combining spatial syntax methods and historical maps from the Museum of London to show how social exclusion is the outcome of an emergent, complex spatial process.

Dr Beau Lotto of the UCL Institute of Ophthalmology was commissioned by the Shoreditch Trust to design a six-metre multicoloured 'Beacon' for the streets of the area. In September 2008 the Beacon produced its own electricity through solar panels and partly recycled paving slabs, which it used to light up at night, according to the number of passers-by.

UrbanBuzz came to a close in December 2008. For two years the UCL Bartlett School had led this government-funded programme bringing together academics and practitioners in the built environment sector in order to link research with practical tools and processes to help build sustainable communities. Presentations and exhibits from the 28 projects were showcased in October 2008 at the Building Centre on Store Street.

Dr Ian Ridley and Professor Robert Lowe (UCL Bartlett School of Graduate Studies) won a Sustainable Housing Award in November 2008 for refurbishing a Victorian council house for energy efficiency with Camden Council and other partners. They were funded by UrbanBuzz.

"Working on the Low Energy Victorian House was both enjoyable and rewarding. It demonstrates in a very real bricks-and-mortar manner how the global challenge of climate change can be addressed on a very practical level, by refurbishing the existing housing stock. It is an example of how as an academic at UCL you can engage with industry and local government, transferring knowledge and experience between partners. Initiatives such as UrbanBuzz show that research can directly feed into practical solutions, at the same time as gathering valuable data, which can then directly feed back into teaching activities."

Dr Ian Ridley

UCL Bartlett School of Graduate Studies

Culture

The inaugural conference for UCL's Bloomsbury Project was held at the Wellcome Trust in June 2008 and opened by Professor Rosemary Ashton of UCL English. The three-year Bloomsbury Project, funded by a grant from the Leverhulme Trust, brings together a range of researchers from several disciplines and institutions, with the aim of piecing together an archive to illustrate 19th-century Bloomsbury's development from swampy rubbish-dump to centre of intellectual life.

UCL President and Provost Professor Malcolm Grant chaired the Bloomsbury hub of the London Festival of Architecture in July 2008. Festivities included a competition and display in the quad of jellies in the form of London monuments. As part of the celebrations, the Barbican Cinema screened a 10-year retrospective of student films from the UCL Bartlett School's Unit 15.

In July 2008, 11 and 12 year-olds from Benthall Primary and the Bridge Academy in Hackney performed Aristophanes' 'Peace' and 'The Frogs' for parents, friends, teachers and members of the UCL community in the UCL Bloomsbury Theatre. The double bill of Greek tragedy and comedy was organised by alumni and current students from UCL Greek & Latin, as a part of UCL's Widening Participation activities. The plays were the culmination of the Hackney Schools Drama Project – a series of workshops run at schools over the past term by alumni Lorna Robinson and Graham Kirby to introduce children to Greek and modern drama, performing arts skills and the university environment.

In September 2008, UCL hosted 'Drawing on Life' with the Wellcome Trust: a free, interactive festival celebrating drawing and life. Cartoonists, fine artists, sculptors and scientists, including UCL geneticist Professor Steve Jones, ran creative workshops, masterclasses and activities for all ages.

The same month, UCL opened its doors to the public as part of Open House London. The university hosted the first London exhibition of 'Nothing is Missing': a multi-channel video installation by cultural theorist and artist Mieke Bal dealing with the impact of migration on mothers who are left behind when their children leave to make a better life in the West.

The UCL Bloomsbury Theatre celebrated its 40th birthday in 2008, playing host to actor Vanessa Redgrave, filmmaker Ken Loach, comedians Russell Brand, John Shuttleworth and Mark Watson as well as UCOpera, the Hackney Schools Drama Project, the Philip Lawrence Awards, the West London School of Dance, and many more.



The architectural jelly competition, hosted at UCL in July 2008, challenged architects to create their favourite landmarks in wobbly form

"The Bloomsbury belongs to UCL – we provide the university with use of the theatre for 12 weeks per year, shared between the Students' Union and academic events. Throughout the other 40 weeks of the year, we play host to top names from across the entertainment spectrum – musical productions, plays, comedy and cultural events. Although it seats over 500 people, there's still an intimate atmosphere. The Bloomsbury is a fantastic resource that enriches the lives of UCL students, the local community, and theatregoers generally."

Frank Penter

Theatre Coordinator, UCL Bloomsbury Theatre

Volunteering

Volunteering activities undertaken by staff and students included conducting a survey of the needs of homeless people in central London; helping at sports sessions for children with learning disabilities; teaching elderly people basic IT skills; and designing murals for local schools and community buildings. Law students Dannii Abel and Ronnie Chiu were recognised for their work running a citizenship education programme in local primary schools, which explained the criminal justice system.

Keep up to date with the range of UCL's work across London at www.ucl.ac.uk/london



Medical students in lecture theatre

The Global Citizenship agenda percolates through all departments' programmes of teaching: regardless of the subject students are studying, we want them to be aware of other cultural systems. We're encouraging more students to go overseas and have that experience of difference in the learning mode.

It's been a big year for technology. As we've moved from WebCT to the Moodle virtual learning environment, we've found enormous enthusiasm from staff as well as students to make more use of electronic possibilities. As a result students have flexible access to more teaching materials online, and there have been some wonderful new ways of exploiting the technology. UCL also became the first major university in the UK to sign up to iTunes U, which helps us to reach out to audiences beyond the student body, as well as enhance teaching.

We've had some terrific examples of staff teaching creatively in other ways, using artistic methods, drama, Writers in Residence and objects from our museums and collections.

These different approaches all reveal to students the wider context to their learning.

Perhaps the biggest challenge is the 'skills for employability' agenda. Our vision is to create a single portfolio of skills that runs from day one of a first year undergraduate programme through masters and PhD to postdoctorate level. We want to give students the skills they need and make them aware of the skills they have in teamworking, leadership, and communication. Consequently the UCL Careers Service has become more involved in our teaching and learning strategy. It is building links with peers internationally and strengthening its relationship with our departments, to give students the richest support possible as they consider life after UCL.



Professor Michael Worton
UCL Vice-Provost (Academic & International)

UCL Teaching & Learning Conference
The 'inner game' of higher education was on the agenda in Professor Sir David Watson's keynote speech at UCL's sixth Teaching & Learning Conference & Exhibition in April. The Chair of Higher Education Management at the University of London's Institute of Education joined speakers including Dr Andrea Townsend-Nicholson (UCL Biosciences), Anthony Peacock (UCL Population Health) and Lisa Penfold (UCL Laws) at the event. The biennial event addressed topics such as virtual learning, internationalising the curriculum, global citizenship, innovation and learning through assessment.

Partnership for Excellence
The Partnership for Excellence, a scheme run by UCL and City and Islington College (CANDI) to help students explore new areas of academic collaboration and innovation, celebrates its 10th birthday this year. UCL hosts regular lectures and masterclasses in a range of subjects for sixth-form students at CANDI's Angel campus and each year 30 UCL students mentor the college's students. The partnership stimulates collaboration in three key areas: raising student aspiration and achievement, staff development and research into curriculum development, pedagogy and transition issues.

Appointment of Dean of Students (Academic)
As part of its commitment to improve the student experience, UCL expanded the established position of Senior Tutor to become Dean of Students (Academic). UCL Professor of Chemistry Mike Ewing took up the inaugural role on 1 January 2009 and will work alongside Dr Ruth Siddall, who becomes Dean of Students (Welfare). Professor Ewing will have a particular focus on overseas students. Meanwhile, all Faculty Tutors now hold full-time posts.



Student ambassadors visited several London schools to inspire and encourage sixth-formers to pursue Chemistry at university, as part of the Aimhigher initiative

Camden Academy

Schoolchildren in Camden are set to benefit from the teaching of UCL staff when a new Academy school opens in 2011 – the first in London to have a university as its sponsor.

The comprehensive school will have places for more than 1,000 local children and will specialise in mathematics and science, with an emphasis on languages. Through its tailored programme of masterclasses, seminars and summer schools, UCL's vision is of an environment that produces critical and creative thinkers of 14–19 years of age who respect cultural differences and understand their responsibilities to local and global communities.

Provost's Teaching Awards
Dr Karen Radner (UCL History) was among 11 winners of this year's Provost's Teaching Awards. Dr Radner was recognised in the 'Beginning of Career' category in the awards, which celebrate excellence and innovation in teaching. Rachel Morley (UCL School of Slavonic & East European Studies) won in the 'Postgraduate Teaching' category, while Judy Medrington (UCL Institute of Archaeology) won for 'Supporting Learning'. A further eight 'Experienced Staff' prizes were awarded to staff drawn from a particularly strong field following 2007's inaugural awards.

Peer Assisted Learning
UCL's Peer Assisted Learning student-to-student support scheme has been running for 10 years. The programme is now in place among 13 UCL departments and faculties, ranging from Laws and Economics, to Computer Science and Medicine. It serves as a revision tool, a social network and general mentoring programme for those new to the intellectual rigours of the university environment.



UCL

Highlights 2008

Teaching & Learning



Nikita Lalwani, winner of the Costa First Novel Award, encouraged staff and students across UCL to explore their creativity during her residency at UCL English

Excellence in Teaching Award

The pioneering teaching work of Dr Sarah Bell (UCL Civil, Environmental & Geomatic Engineering) was rewarded at the inaugural Royal Academy of Engineering Teaching Awards. The award recognised her commitment to fostering awareness of sustainability issues, including the creation of the MSc in Environmental Systems Engineering, which also promotes industry collaboration. Dr Bell also heads a network of water researchers across UCL, academia and industry as co-director of the UCL Environmental Institute.

UCL on iTunes U

UCL opened up its educational impact to the world by launching a presence on iTunes U, through which users can download lectures, interviews, seminars and news, and play audio and video materials on their iPod or computer. The partnership with Apple made UCL the first mainstream UK university, and one of three European universities, to pioneer global participation in iTunes U.

UCL Medical Student Prizes

There was success once again for UCL in this year's annual awards for graduating medical students within the University of London. UCL Medical School 2008 student Christopher Lane won the Gold Medal for Medicine, while his peer Neil Halliday took the Betuel Prize as runner-up. UCL has now won in almost half the years since the Gold Medal was introduced in 1903.

LEPA Award

UCL Physics & Astronomy's outreach work with pupils at Haringey's Alexandra Park School was rewarded at the London Education Partnership Awards. A team led by Dr Steve Fossey has fostered a collaboration with the school over the past decade. In the past year it has helped to develop curriculum resources for GCSE and A-Level Physics and arranged visits to the University of London Observatory at Mill Hill. Over the course of the partnership, the number of astronomy students at the school has swelled from 15 to more than 100.

ESCILTA enhances the learning experience

Each year, UCL's Executive Sub Committee on Innovations in Teaching Learning and Assessment (ESCILTA) offer grants averaging £5,000 each to support initiatives in learning, teaching and assessment. In the academic year 2007/2008, nine grants were awarded for projects including software for the teaching of spatial analysis in archaeology, an initiative to bring together medical students with students of other clinical disciplines to develop team-working skills, and a collaborative project for Physics & Astronomy undergraduates to monitor possible extra-solar planets.

Scholarship Awards

In December, a packed Jeremy Bentham Room at Gower Street welcomed UCL's newest scholarship recipients Ambassadors, High Commissioners and other senior diplomats from around the world, plus funding organisations, heads of UCL departments and senior staff joined the 145 winners at the annual Scholarship Awards Ceremony. Professor Michael Worton, UCL's Vice-Provost (Academic & International), reflected on UCL's role as London's Global University and urged the winners: "You must take what you learn and discover, and you must do something with it – it's not just about your excellence, it is about what you do with it."

Writers in Residence

UCL once again invited renowned authors to share their experiences and advice with students as writers in residence. Iranian author Kader Abdolah, who settled in the Netherlands 20 years ago, had nothing but praise for everyone at UCL Dutch, claiming he had never come across such ambitious students and admiring how "intensively busy" they were with his words when they embarked on translations of his short stories. Meanwhile, British-Indian writer Nikita Lalwani, placed within UCL English, enjoyed encouraging "slightly obscene emotional revelation" out of UCL students in her bid to shake off politeness to uncover some deeper truths.

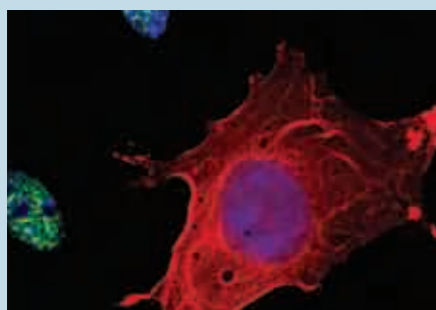
Climate Change Commission

UCL and 'The Lancet' launched a joint commission to report in 2009 on managing the human health effects of climate change – an area often overlooked in the climate change debate. The Lancet-UCL Commission reviewed the likely health impacts of climate change on human societies, and documented ways to manage those impacts, with membership drawn from departments and centres with a wide range of expertise and experience.



JANUARY
New Year's Honours

Many UCL staff were recognised in the 2008 Queen's New Year's Honours List, including CBEs for Professor Christine Hawley, Dean of the UCL Faculty of the Built Environment for services to architectural education and to Professor Valerie Lund, professor of rhinology at the UCL Ear Institute, for services to medicine. These New Year's Honours marked the start of a year full of awards for UCL staff. *See Awards and Appointments page 22*



FEBRUARY
Stanmore Implants sold off

UCL Business negotiated the £12.5 million sale of Stanmore Implants Worldwide Limited, a successful spin-off company from UCL's Centre for Biomedical Engineering. The company is an innovative orthopaedic business focused on saving and restoring the function of limbs and joints; the deal went on to win 'Commercial Deal of the Year' award at the London Knowledge Transfer Awards. *See Enterprise page 26*

MARCH
Green light for the Camden Academy

In March, preparations were underway at UCL for the development of a new Academy school in the London Borough of Camden, following an announcement from the Department for Children, Schools and Families that UCL's bid to sponsor the school had been successful. The comprehensive, non-selective school is scheduled to open in 2011, and will have places for more than 1000 local schoolchildren. These pupils will benefit from a tailored programme of masterclasses, seminars and summer schools given by UCL staff and supported by UCL students, and will have access to UCL's world-class facilities. *See Teaching and Learning page 14*



APRIL
Breakthrough in gene therapy treatment for blindness

Researchers from the UCL Institute of Ophthalmology and Moorfields Eye Hospital announced results from the world's first clinical trial to test a revolutionary gene therapy treatment for a type of inherited blindness. The results showed that the experimental treatment is safe and can improve sight, when a man who had been treated was able to walk unaided through a maze in poor lighting conditions. *See London page 11*



MAY
UCL sets up Adelaide campus

UCL took steps to establish its first overseas degree programme at the UCL School of Energy and Resources in Australia, with initial agreements made in May, and the final signings concluded in December. The Adelaide campus, to be opened in 2009, is the result of an agreement between UCL and the Government of South Australia, with substantial philanthropic support from Australian energy company Santos. *See Global page 8*



JUNE
UCL-China Research Festival

UCL's myriad research collaborations with Chinese institutions were showcased at the UCL-China Research Festival. More than 320 people attended the event, which hosted around 30 presentations and poster displays on topics such as architecture and urban planning, psychology and social science, chemistry and space. *See Global page 8*



JULY
People of African descent more susceptible to HIV

Professor Robin Weiss and Dr Ed Wright (UCL Division Infection & Immunity) co-authored a paper published in 'Cell Host & Microbe' identifying a genetic variation that makes many people of African descent more susceptible to HIV. The discovery marks the first genetic risk factor for HIV found only in people of African descent, and sheds light on the differences in genetic makeup that play a crucial role in susceptibility to HIV and AIDS. *See Research page 2*



AUGUST
UKCMRI

The leading architecture practice, HOK, were commissioned to build the UKCMRI headquarters, following a worldwide selection process. Meanwhile, academics developed the UKCMRI scientific vision through a Science Planning Committee. *See Research page 2*

SEPTEMBER
UCL Partners

Europe's largest Academic Health Science Partnership was launched, with UCL and four of its major hospital partners coming together to form a partnership through which medical research can be better planned and delivered. UCL Partners brought UCL together with Great Ormond Street Hospital for Children NHS Trust, Moorfields Eye Hospital NHS Foundation Trust, the Royal Free Hampstead NHS Trust and University College London Hospitals NHS Foundation Trust. *See Research page 2*



OCTOBER
Engineering Front Building unveiled

The £11.4 million Engineering Front Building on Torrington Place was opened at an official ceremony attended by former Minister for Science, Lord Sainsbury. The building is designed to be a centre for collaboration between the university and the business community. It houses UCL's new Department of Management Science and Innovation as well as the university's entrepreneurship centre, UCL Advances. *See Finance and Investment page 29*

NOVEMBER
Governments reviews in health and environment

UCL's Professor Sir Michael Marmot (UCL Epidemiology & Public Health) is to lead a major government review of health inequalities in England. Secretary of State Alan Johnson announced that Sir Michael will help the Department of Health to establish new targets for tackling inequalities up to 2020. He will draw on the Commission's 2008 report into the social determinants of health. The results of another important government report led by a UCL academic were also published in November; 'Powering Our Lives: Sustainable Energy Management and the Built Environment' outlined how human spaces can be adjusted to provide a greener environment. The report was produced by a group of Lead Experts chaired by Professor Yvonne Rydin of the UCL Bartlett School. *See Research page 2*

DECEMBER
RAE 2008

In the outcome of the 2008 Research Assessment Exercise (RAE) UCL was rated the best research university in London, and third in the UK overall, for the number of its submissions which were considered of 'world-leading quality'. The RAE confirmed UCL's multidisciplinary research strength with outstanding results achieved in Biomedicine, Engineering Sciences, the Built Environment, Laws, Social Sciences, Arts and Humanities. *See Research page 2*

International headlines

Many UCL news stories made the headlines overseas in 2008. Here are some of the stories that caught the interest of the world press.

'London uni to offer energy and resources course down under'
(The Australian)

UCL's signing of an agreement with the South Australian Government to deliver two-year masters degrees in Energy

and Resources in Adelaide was widely reported in the UK and International press.

'Gene therapy aimed at curing blind children'
(The Hindu)

When UCL scientists announced the launch of the world's first clinical trials of a controversial gene therapy to cure childhood blindness, the news reached as far as India. *See page 11*

'Study says job stress strains the heart'
(CBS News)

A UCL study of 10,000 civil servants, which found that job stress was bad news for the heart, attracted press interest in the USA. Led by Dr Tarani Chandola (UCL Epidemiology & Public Health), the study is part of the long-running Whitehall II study, led by UCL epidemiologist Professor Sir Michael Marmot.

'Warming Atlantic worsens hurricanes'
(USA Today)

Home to the AON Benfield Hazard Research Centre, UCL is a leader in natural hazard prediction, often making global headlines. A study uncovering a distinct numerical connection between the ups and downs of water temperatures and how nasty the hurricane season gets made waves in January.

'US and UK universities continue to dominate'
(Bloomberg)

UCL's rise to seventh place in the Times Higher QS World University Rankings was reported in the global press. *See page 6 for UCL's research achievements.*

'Early TB found in 9,000 year-old bones'
(Washington Post)

When the earliest known cases of human tuberculosis were identified by UCL scientists in 9,000 year-old bones found

off the coast of Israel, the study garnered widespread interest.

'British researchers find obesity largely genetic'
(China View)

The problem of obesity has worldwide impact, and UCL's expertise is reported globally, including a study from UCL Epidemiology & Public Health that found evidence for a genetic basis for the condition.



Highlights 2008



Global Health

In 2008, UCL addressed the first Grand Challenge: that of Global Health. UCL has a strong international profile in the major disciplines that are key to addressing barriers to sustainable improvement in global health such as anthropology, biomedicine, the built environment, climatology, development planning, economics, human rights, laws, and political science.

Awards & Appointments

Fellowships



Professor Ruth Mace
(UCL Anthropology) *top left*



Professor Sir Michael Marmot
(UCL Population Health) *top right*



Dr Margaret Mayston
(UCL Physiology) *bottom right*

Australian Academy of Science
Fellow: Dame Bridget Ogilvie
(UCL Medical School)

Biotechnology & Biological Sciences Research Council
David Phillips Fellowship:
Dr Sven Bestmann (UCL Institute of Cognitive Neuroscience)

British Academy
Fellows: Professor Jon Driver
(UCL Institute of Cognitive Neuroscience), Professor Chris Frith (UCL Institute of Neurology), Professor Ruth Mace (UCL Anthropology), Professor Daniel Miller (UCL Anthropology) and Professor Vivian Nutton (Wellcome Centre for the History of Medicine at UCL)

Honorary Fellow:
Professor Sir Michael Marmot
(UCL Population Health)

Chartered Society of Physiotherapy
Fellow: Dr Margaret Mayston
(UCL Physiology)

Econometric Society
Fellows: Dr Mark Armstrong
(UCL Economics) and Professor Martin Cripps (UCL Economics)

Japan Society for the Promotion of Science
Post-Doctoral Fellowship:
Dr Sanjay Rana
(UCL Civil, Environmental & Geomatic Engineering)

Leverhulme Trust
Fellows: Dr Wendy Bracewell
(UCL SSEES)
Dr Ardis Butterfield (UCL English)

L'Oreal For Women in Science
Fellowship: Dr Sarah Bridle
(UCL Physics & Astronomy)

Medical Research Council
Clinical Scientist Fellowship:
Dr Jenny Crinion (Wellcome Trust Centre for Neuroimaging at UCL)

National Academy of Sciences (India)
Foreign Fellow: Professor Robin Clark (UCL Chemistry)

New York University
School of Law
Senior Emile Noel Fellow:
Dr Ioannis Lianos (UCL Laws)

Optical Society of America
Fellow: Professor Polina Bayvel
(UCL Electronic & Electrical Engineering)

Royal Academy of Engineering
Fellow: Professor Nigel Titchener-Hooker
(UCL Biochemical Engineering)

Royal College of Speech & Language Therapists
Honorary Fellowship:
Professor Shula Chiat (UCL Human Communication Science)

Royal Society
Fellow: Dr Giovanna Tinetti
(UCL Physics & Astronomy)

University Research Fellowship:
Dr Sam Gilbert (UCL Institute of Neurology)

Society of Antiquaries
Fellows: Dr Martin Bridge
(UCL Institute of Archaeology), Dr Joseph Flatman (UCL Institute of Archaeology), Dr Susan D A Hamilton (UCL Institute of Archaeology), Dr Kris Lockyear (UCL Institute of Archaeology), Professor Roger Matthews (UCL Institute of Archaeology), Ms Sally Worrell (UCL Institute of Archaeology)

University of Sydney
Visiting International Research Fellow: Professor Robert Unwin
(UCL Medicine)

Honorary Doctorates, Fellowships, Lectureships and Senior Investigatorships



Professor David Linch
(UCL Cancer Institute)



Professor Geraint Rees
(UCL Institute of Neurology)

Association of Surgeons of India
Honorary Fellowship: Professor Irving Taylor (UCL Surgery)

Charles University (Czech Republic)
'Doctor Honoris Causa': Professor Salvador Moncada (UCL Wolfson Institute for Biomedical Research)

J W Goethe-Universität (Germany)
Doctor Philosophiae Naturalis Honoris Causa: Professor Geoffrey Burnstock (UCL Biosciences)

HEFCE/Department of Health Senior Lecturer Awards:
Dr Doris-Eva Bamiou (UCL Ear Institute); Dr Paul Brogan (UCL Institute of Child Health); Dr Claudia Cooper (UCL Population Health); Dr Bernard Khoo (UCL Medicine); Dr Arian Laurence (UCL Infection & Immunity); Dr Gary Lee (UCL Medicine); Dr Marc Lipman (UCL Medicine); Dr Mark Peters (UCL Institute of Child Health); Dr Alison Rodger (UCL Population Health); Mr Mandeep Sagoo (UCL Institute of Ophthalmology); Dr Jonathan Schott (UCL Institute of Neurology); Dr Andre Strydom

(UCL Population Health); Dr Ahmed Toosy (UCL Institute of Neurology); Miss Janice Tsui (UCL Surgical & Interventional Sciences); Dr Gelareh Zadeh (UCL Institute of Neurology and UCLH)

Monash University (Australia)
Honorary Fellow: Professor John Lowry (UCL Laws)

NHS National Institute for Health Research Senior Investigator: Professor Martin Brown (UCL Institute of Neurology), Professor John Collinge (UCL Institute of Neurology), Professor Peter Ell (UCL Medicine), Professor Alastair Forbes (UCL Medicine), Professor David Linch (UCL Cancer Institute), Professor Anthony Moore (UCL Institute of Ophthalmology), Professor Deenan Pillay (UCL Infection & Immunity), Professor Martin Rossor (UCL Institute of Neurology), Professor Alan Thompson (UCL Institute of Neurology), Professor Adrian Thrasher (UCL Institute of Child Health) and Professor Nicholas Wood (UCL Institute of Neurology)

Queen's Counsel Honoris Causa, for his work on the development of environmental law: Professor Richard Macrory (UCL Laws)

Royal College of Physicians Milroy Lectureship 2009: Professor Catherine Law (UCL Institute of Child Health)

Goulstonian Lectureship 2009: Professor Geraint Rees (UCL Institute of Neurology)

Royal Society of Chemistry Liversidge Lectureship: Professor Richard Catlow (UCL Chemistry)

University of Athens Honorary Doctorate: Professor Chris Carey (UCL Greek & Latin)

University of London External System D Litt (Education) Honoris Causa: Emeritus Professor Lewis Elton (UCL Centre for the Advancement of Learning & Teaching)

Royal Norwegian Order of Merit
Professor Michael Barnes and Dr Marie Wells (UCL Scandinavian Studies)

Royal, National and International Honours



Professor Christine Hawley
(UCL Bartlett School)

New Year's Honours
Commander of the Order of the British Empire (CBE), for services to architectural education: Professor Christine Hawley (UCL Bartlett School)

CBE for services to medicine: Professor Valerie Lund (UCL Ear Institute)

Queen's Birthday Honours
Knights Bachelor, for services to Parliament: The Rt Hon Sir Alan Beith, MP, Lay Member of the UCL Constitution Unit Council

CBE for services to medicine: Professor Anthony Goldstone (UCL Fellow 1994), UCL Haematology

Officer of the Order of the British Empire (OBE), for services to crime policy: Professor Gloria Laycock (UCL Psychology 1968; PhD 1975), Director of the UCL Jill Dando Institute of Crime Science

Royal Norwegian Order of Merit
Professor Michael Barnes and Dr Marie Wells (UCL Scandinavian Studies)



Professor Sir Martin Evans
(PhD UCL Anatomy & Developmental Biology 1969)

Nobel Prize for Physiology or Medicine: Professor Sir Martin Evans (PhD UCL Anatomy & Developmental Biology 1969), UCL Anatomy & Embryology (1966–1979)

Presidencies, Directorships, Chairs and Editorships

'Anglo-Saxon'
Executive Editor: Dr Andrew Reynolds (UCL Institute of Archaeology)

British Tissue & Cell Engineering Society
President: Professor Robert Brown (UCL Surgical & Interventional Sciences)

The English Goethe Society
Editor of 'Publications of the English Goethe Society': Professor Susanne Kord (UCL German)

European Association for the Study of the Liver
Honorary President of the Annual Meeting: Professor Roger Williams (UCL Medicine)

International Council for Science
Strategic Committee on Information & Data Chair: Professor Ray Harris (UCL Geography)

New Opportunities for Research Funding Agency Cooperation in Europe
International Programme Director, 'Migration in Europe – Social, Economic and Policy Dynamics': Professor Christian Dustmann (UCL Economics)

'Regenerative Medicine'
Senior Editor: Dr Chris Mason (UCL Biochemical Engineering)

Royal Institution Davy-Faraday Research Laboratory
Director: Professor Quentin Pankhurst (London Centre for Nanotechnology)

Science & Technology Facilities Council
Science Board Deputy Chair: Professor Jenny Thomas (UCL Physics & Astronomy)

Memberships

3 Verulam Buildings (3VB)
Door Tenant: Sandy Shandro (UCL Laws)

Academia Europaea
Invited to accept membership: Professor Janette Atkinson (UCL Psychology & Language Sciences) and Professor Tim Crane (UCL Philosophy)

Academia Europaea
Member: Professor Timothy Mathews (UCL French)

American Philosophical Society
Member: Emeritus Professor Ronald Dworkin (UCL Laws)

Department of Health Advisory Committee on the Safety of Blood Tissues & Organs
Member: Professor Richard Tedder (UCL Infection & Immunity)

Department of Health Advisory Committee on Antimicrobial Resistance & Healthcare Associated Infection
Member: Professor Deenan Pillay (UCL Infection & Immunity)



Professor Uta Frith
(UCL Institute of Cognitive Neuroscience)

Eco-Towns Challenge Panel
Member: Professor Sir Peter Hall (UCL Bartlett School)

The English Goethe Society Honorary Secretary and Council
Member: Professor Susanne Kord (UCL German)

German Academy of Sciences (Leopoldina)
Member: Professor Uta Frith (UCL Institute of Cognitive Neuroscience)

Gray's Inn
Honorary Master of the Bench: Professor Dame Hazel Genn (UCL Laws)

Materials Research Society (USA)
Board of Directors Member: Professor Ian Boyd (London Centre for Nanotechnology and UCL Electronic & Electrical Engineering)

Nuffield Bioethics Council
Member: Professor Jonathan Wolff (UCL Philosophy)

Awards, Medals & Prizes

Academia Europaea

ERASMUS Medal Winner & Lecturer: Professor Semir Zeki (UCL Biosciences)

Invited to accept membership: Professor Janette Atkinson (UCL Psychology & Language Sciences) and Professor Tim Crane (UCL Philosophy)

Academy of Medical Sciences Faulkes Foundation Medal: Professor Robin Ali (UCL Institute of Ophthalmology)

American Academy of Religion Award for Excellence in the Study of Religion: Professor Ben Kaplan (UCL History) for his book 'Divided by Faith: Religious Conflict and the Practice of Toleration in Early Modern Europe'

Association for Heterodox Economics
Ruskin Anniversary Prize: Professor Victoria Chick (UCL Economics)

Association of American Law Schools Evidence Section
Inaugural John Henry Wigmore Award for Lifetime Achievement in the Law of Evidence and the Process of Proof: Emeritus Professor William Twining (UCL Laws)

Association of University Programs in Health Administration and the Baxter International Foundation
2008 William B Graham Prize for Health Services Research: Professor Sir Michael Marmot (UCL Population Health)

British Archaeological Awards
Lifetime Achievement Award (Silver Trowel): Professor Clive Orton (UCL Institute of Archaeology)

British Liquid Crystal Society
Cyril Hilsun Medal: Dr Sally Day (UCL Electronic & Electrical Engineering)



Professor John Martin (UCL Centre for Cardiovascular Biology & Medicine)

Centres for Disease Control & Prevention Foundation
2007 Hero Award: Professor Sir Michael Marmot (UCL Epidemiology & Public Health)

COMPASS Prize
Best Paper in an Academic Journal: Professor Mark Armstrong (UCL Economics)

Construction Industry Council and the Happold Trust
Happold Medal: Professor Sir Peter Hall (UCL Bartlett School)

'Environmental Research Letters'
Outstanding Article of the Year Award: Dr Martin C Todd (UCL Geography)

European Society of Cardiology Council on Basic Cardiovascular Science
Outstanding Achievement Award 2008: Dr Paul Riley (UCL Institute of Child Health)

Gold Medal: Professor John Martin (UCL Centre for Cardiovascular Biology & Medicine)

European Society of Surgical Oncology Medal: Professor Irving Taylor (UCL Surgery)



Professor David Delpy (UCL Medical Physics & Bioengineering)

Fondation Napoléon
Grand Prix History Prize: Dr Thomas Munch-Petersen (UCL Scandinavian Studies)

ForeWord Magazine Book of the Year Gold Medal, History: Professor Harold Cook (Wellcome Trust Centre for the History of Medicine at UCL), for 'Matters of Exchange: Commerce, Medicine, and Science in the Dutch Golden Age'

German Cochrane Center and the Deutsche Krankenversicherung
2007 Cochrane Prize: Dr Ian Needleman (UCL Eastman Dental Institute), for the Cochrane Systematic Review 'Full-mouth disinfection for the treatment of chronic periodontitis'

History of Science Society
2007 Joseph H Hazen Education Prize: Dr Joe Cain (UCL Science & Technology Studies)

Imperial College London
2008 Ernst Chain Prize: Professor Mark Pepys (UCL Medicine)

Institut d'Economie Industrielle
Jean-Jacques Laffont Prize: Professor Richard Blundell (UCL Economics)

Institute of Materials, Minerals & Mining
2008 Kroll Medal & Prize: Professor Ivan Parkin (UCL Chemistry)

Institute of Physics
Franklin Medal: Professor David Delpy (UCL Medical Physics & Bioengineering)

Maxwell Medal: Professor Sougato Bose (UCL Physics & Astronomy)

Moseley Medal: Professor Helen Fielding (UCL Chemistry)

Mott Medal: Professor Gabriel Aeppli (UCL Physics & Astronomy) and the London Centre for Nanotechnology)

Institute for the Study of Labor (IZA)
Young Labor Economist Award: Imran Rasul (UCL Economics)

Intellectual Asset Management
IP Hall of Fame 2007 Inductee: Professor Sir Hugh Laddie (UCL Laws)

International Movement Disorder Society
2008 Junior Award for Excellence in Clinical Research: Dr Luke Massey (UCL Institute of Neurology)

Justine et Yves Sergent Award 2008
Professor Cathy Price (UCL Institute of Neurology)

Kazakhstan Science & Education Ministry
Medal for Services to Kazakhstan Education: Professor Stefaan Simons (UCL Chemical Engineering)

Linnean Society of London
Tercentennial Medal: Professor Steve Jones (UCL Biology)

The Leverhulme Trust
2008 Philip Leverhulme Prize: Dr Natasha Eaton (UCL History of Art) and Professor Marianna Csornyei (UCL Mathematics)

London and Middlesex Archaeological Society
Ralph Merrifield Award Co-Winner: Clive Orton (UCL Institute of Archaeology)

London Knowledge Transfer Awards
Knowledge Transfer Champion: Dr Jeff Skinner (UCL Director for Corporate Alliances)

Commercial Deal of the Year: Stanmore Implants Worldwide Ltd

Ludvig Holberg Memorial Fund
2007 Holberg International Memorial Prize: Professor Ronald Dworkin (UCL Laws)

Magstim Young Investigator Award: Dr Marco Davare (UCL Institute of Neurology)

Medical Futures Innovation Award
Cancer Innovation Award: Dr Kai Stoeber (UCL Cancer Institute) and Professor Gareth Williams (UCL Cancer Institute)

Best Diagnostic Technology: Professor Stephen Bown (UCL Surgical & Interventional Sciences), Mr Santosh Somasundaram (UCL Surgical & Interventional Sciences) and Dr Martin Austwick (UCL Surgical & Interventional Sciences)

Pacific Ocular Regeneration Biology Conference
Santen Prize for Excellence: Dr Jane Sowden (UCL Institute of Child Health)

Peter & Patricia Gruber Foundation
2008 Neuroscience Prize: Professor John O'Keefe (UCL Biosciences)

Polish Society of Surgical Oncology Gold Medal, and Honorary Membership of the Society: Professor Irving Taylor (UCL Surgical and Interventional Sciences)

Royal Academy of Engineering
ExxonMobil Excellence in Teaching Award: Dr Sarah Bell (UCL Civil, Environmental & Geometric Engineering)

Royal College of General Practitioners
George Abercrombie Award (Silver Medal): Dr Cecil Helman (UCL Primary Care & Population Health)

Royal Medal: Professor Cyril Hilsun (UCL Physics & Astronomy)

Wolfson Research Merit Award: Professor Dario Alfé (UCL Earth Sciences and UCL Physics & Astronomy)

Royal Society of Chemistry
Barrer Award: Dr Ben Slater (UCL Chemistry)

Harrison Medal & Prize: Dr Katherine Holt (UCL Chemistry)

Marlow Medal & Prize: Dr Stefan Willitsch (UCL Chemistry)

Royal Society of Medicine and Society of Authors
Medical Book Award for New Authored Books: Professor Michael Wilson (UCL Eastman Dental Institute), 'Bacteriology of Humans: an Ecological Perspective'

Royal Society of British Architects
2008 RIBA President's Award for Research (Outstanding PhD Thesis): Dr Marcos Cruz (UCL Bartlett School)

Royal Statistical Society
2008 Guy Gold Medal: Professor James Durbin (UCL Economics)

Society of Legal Scholars
Runner-up, Birks Book Prize for Outstanding Legal Scholarship: Dr Sylvie Delacroix (UCL Laws)

Socio-Legal Association
Article Prize for 2008: Dr Jane Holder (UCL Laws)

Karolinska Institutet

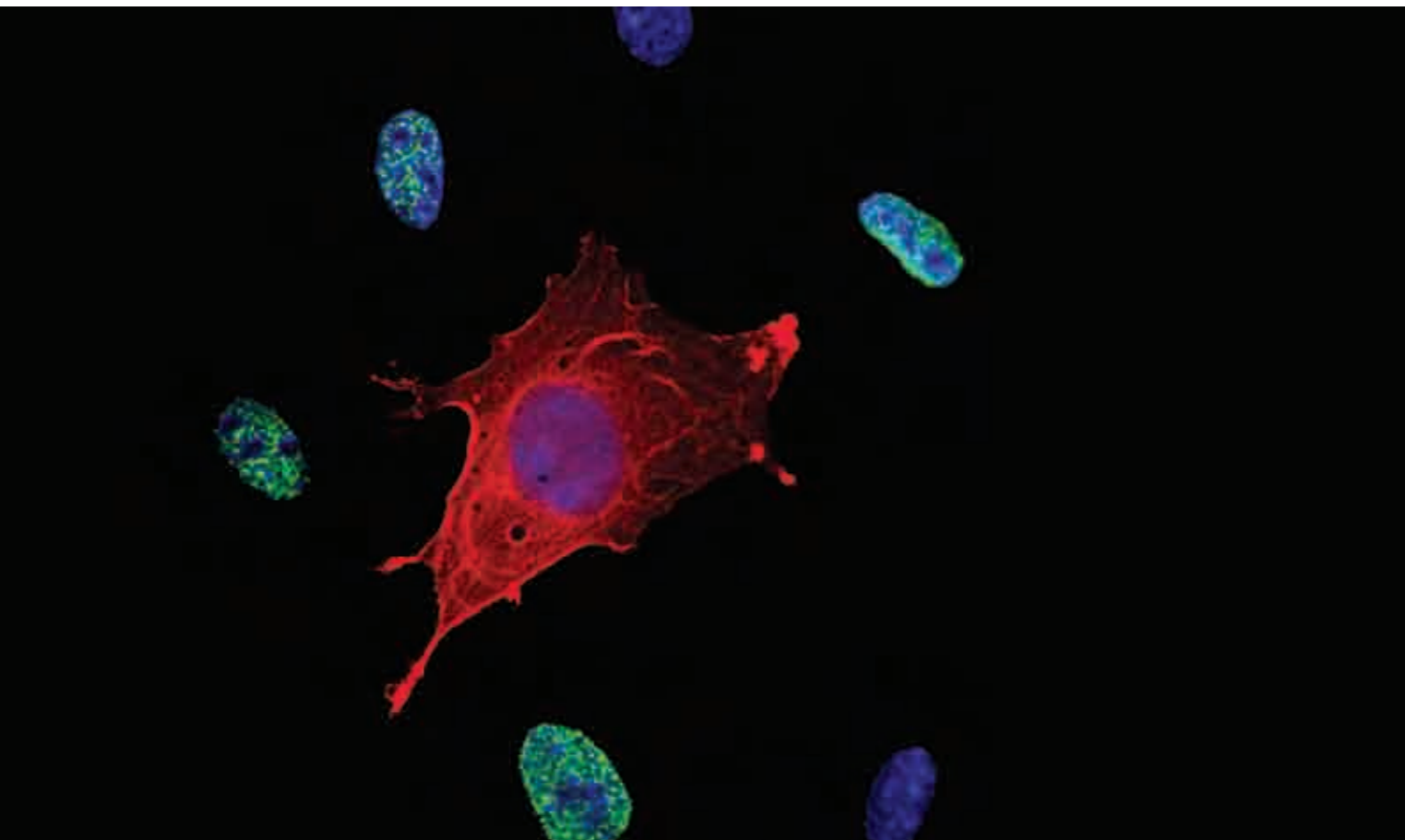
Tore Andersson Prize for Epidemiological Research: Professor Sir Michael Marmot (UCL Epidemiology & Public Health)

UK Resource Centre for Women in Science, Engineering & Technology
Woman of Outstanding Achievement 2008: Professor Uta Frith (UCL Institute of Cognitive Neuroscience)

University of Santiago, Spain
Inaugural Compostela Dentistry Award (Most Distinguished International Clinical Investigator): Professor Crispian Scully (UCL Eastman Dental Institute)

Wellcome Trust
Strategic Award: Professor Semir Zeki (UCL Anatomy & Developmental Biology)

World Academy of Ceramics
Academician of the Class 'Science': Professor Mohan Edirisinghe (UCL Mechanical Engineering)



UCL's innovative approach to enterprise is increasingly being recognised and this year received important evaluation and endorsement when the Higher Education Funding Council for England (HEFCE) gave us the highest possible award for our knowledge-transfer strategy.

For UCL, knowledge transfer means both communicating our activities to the broadest possible public, and engendering a culture of innovation and entrepreneurship within the university. We want to help both staff and students to see that the activities that they are engaged in may be of importance in developing new products and inventions that can increase the wealth of the nation.

To this end, we have brought new courses into the undergraduate sphere, of which Management Science is one example in Engineering, and we have used UCL Advances to provide modules in graduate programmes in general. We're developing our relationship with the London Business School, so that

academics can enhance their understanding of the process of commercialisation.

Attending the inaugural UCL Enterprise Awards was a particular pleasure in 2008, because it showed how innovation really is effective across the spectrum, from undergraduate students through to our academic staff.

Importantly, this year has also seen the implementation of new processes and events to bring us closer to our extremely successful industrial partners, resulting in a new level of dialogue. One example from UCL Business is the introduction of breakfast meetings with venture capitalists and people from industry to discuss inventions originating from UCL.

Cancer cells, from research by Dr Kai Stoeber and Professor Gareth Williams (UCL Wolfson Institute for Biomedical Research)

UCL celebrates 200 years of passenger rail

In June, UCL hosted the Bicentennial Trevithick Dinner, named after Richard Trevithick (1771–1833) who patented an effective high-pressure steam engine, to celebrate 200 years of passenger rail. The event, attended by senior industry figures and engineering institutions, demonstrated the importance of UCL business partnerships. The UCL–Eurostar Trevithick Innovation & Invention Prizes were also awarded to UCL staff and students for projects with an audacious approach to innovation.

Provost appointed Business Ambassador

Professor Malcolm Grant, UCL President and Provost, was named by the Prime Minister as one of the government's new Business Ambassadors in October. The Business Ambassadors network brings together business and university leaders who will work with the government to promote the UK's excellence internationally and to highlight trade and investment opportunities.

HEFCE funding for Knowledge Transfer

In October, HEFCE announced a £5m award for UCL over three years through the Higher Education Innovation Fund, in support of the university's knowledge-transfer strategy. In a HEFCE overview report on the progress made by the higher-education sector in supporting economic and social development, UCL was cited for its "commitment to a step-change in performance through integration of its economic and social contributions with its mission".

UCL celebrates first ever Enterprise Awards

In May, UCL held its inaugural Enterprise Awards in recognition of student and staff achievement in entrepreneurialism and innovation. The awards recognised three distinct areas: demonstration of successful commercial activity; innovation with contribution to UCL's research and training; and innovation with potential for future application. Winners included undergraduate and postgraduate students from the sciences and humanities.



Richard Trevithick's steam engine

UCL engineer coordinates Network Rail

In October, Dr Jonathan Iliffe (UCL Civil, Environmental & Geomatic Engineering) was awarded the Richard Carter Prize (Geospatial Engineer Award) 2008 from the Institution of Civil Engineering Surveyors for outstanding contributions to the civil engineering surveying industry and geospatial engineering. He developed local co-ordinates mapping software for Network Rail, with support from UCL Business, which provides an innovative solution to a significant problem in engineering surveying.

Entrepreneurship Boot Camp

In October, UCL hosted a highly successful 'Entrepreneurship Boot Camp' pioneered by leading venture capitalist Dr Jack M Gill. The course was designed for those with an interest in the dynamics of high-tech entrepreneurship and the process of bringing innovations to commercial markets, and demonstrates how UCL Advances and UCL Management Science & Innovation are harnessing external expertise to encourage entrepreneurship and innovation at UCL.

The other area that has really been a highlight this year has been our success in the sale of spin-out company Stanmore Implants. There was a long period of work by UCLB in developing this company, and it is now producing products that will improve the health of a great number of individuals as well as bringing resources into UCL.



Professor Mike Spyer,
UCL Vice-Provost (Enterprise)

Knowledge Transfer Champion at UCL

In December, UCL was recognised in two categories at the London Knowledge Transfer Awards. Dr Jeff Skinner, UCL Director for Corporate Alliances, won the 'Knowledge Transfer Champion' Award. Dr Skinner has been central to knowledge transfer and commercialisation activities at UCL for sixteen years. The awards celebrated innovation resulting from collaboration between universities and business, leading to the profitable sharing of ideas and expertise.

Stanmore Implants sold off

Stanmore Implants Worldwide Ltd (SIW), a successful spin-out company from UCL's Centre for Biomedical Engineering, won the 'Commercial Deal of the Year' award for its £12.5 million sale to Abingworth Management and MDY Healthcare plc in February. The company is an innovative orthopaedic business focused on saving and restoring the function of limbs and joints. Professor Gordon Blunn, Head of the UCL Centre for Biomedical Engineering, together with SIW, pioneered a significant new implant that enables the attachment of clip-on prostheses to the skeleton and skin without causing infection. This technique has already benefited a survivor of the London bombings on 7 July 2005, who was the subject of the pilot for the implant.

Cancer innovations and glaucoma detection rewarded

In December, three UCL teams were recognised by the Medical Futures Innovation Awards 2008. The Cancer Innovation Award was presented to Professor Gareth Williams and Dr Kai Stoeber, both from UCL Pathology, the Wolfson Institute for Biomedical Research and the UCL Cancer Institute. They developed a test for diagnosing bladder cancer at the point of patient care in collaboration with UroSens Ltd (Cambridge). The new test is much cheaper than existing technology and should reduce the need for cystoscopy in diagnosis of bladder cancer.

Professor Stephen G Bown, Mr Santosh Somasundaram and Dr Martin Austwick from UCL and Mohammed Keshtgar from the Royal Free Hospital won the 'Best Diagnostic Technology' for creating a device designed for use in breast cancer surgery. It enables instant assessment and removes the need for further invasive surgery.

A team from Moorfields Eye Hospital was awarded the MRC Translational Research Innovation Award for the Moorfields Motion Displacement Test (MDT), a software programme for assessing the field of vision to detect glaucoma. The product is portable, affordable, quick to detect vision problems, and could be accessible through the internet in the future.



The Moorfields Motion Displacement Test team receiving their Medical Innovation Award



The team receiving the Cancer Innovation Award at the Medical Futures Innovation Awards 2008



Dr Martin Austwick, Mr Mohammed Keshtgar and Professor Stephen Bown receiving their Medical Innovation Award from Dr Alice Roberts

All above images: Medical Futures



The Flaxman Gallery, Wilkins Library

Once again, it is encouraging that UCL has been able to record a steady increase in income in 2007-08. However, expenditure continues to rise as well resulting in a small surplus position for the year. Behind these results are the substantial efforts made by staff across the whole of UCL towards achieving savings targets on their operating budgets. In terms of the external environment, 2008 posed many financial challenges for us, and there will undoubtedly be more in 2009 and beyond.

Research Income continues to rise in the face of competition and UCL's strong results in the Research Assessment Exercise announced in December 2008 have meant that our Quality Research (QR) funding from the Higher Education Funding Council for England will be maintained at the same level as in the past.

In further support of our research activities we have invested more this year in research facilitators to support our staff with their funding applications. This is already bearing fruit as we see increased application levels compared to previous years – although the impact on income levels will take twelve to eighteen months to come through.

Student fees continue to increase with a substantial proportion coming from overseas students. With the current financial difficulties being faced on a global scale we need to continue to ensure that we remain attractive to those joining us from abroad as well as those from closer to home. We continue to invest in our teaching spaces and student accommodation to further enhance the student experience.

None of us know how long or how deep the current global recession will be but it is not UCL's intention to rely just on short term tactical responses to this background. We will be looking at the opportunities for income growth, for cost savings and for ways to mitigate the financial risks facing us. Sooner or later there will be an economic upturn, and UCL needs to be best-placed to respond to it.



Alison Woodhams
UCL Director of Finance



UCL Print Room Café, South Junction

Print Room Café opened

UCL students and staff now have a shared central location to relax and congregate, thanks to the opening of the Print Room Café and bar by the South Junction this year. The café – funded in part by a £250,000 philanthropic gift – is now run by UCL Union, and is proving a highly popular spot for coffee and cake, or a glass of wine in the evenings.

Student residences refurbished

Students at UCL now have a new hall of residence to call home. Ian Baker House, named after UCL's former Administrative Secretary, provides 91 single-study bedrooms in a self-catering building in the newly landscaped grounds of Ramsay Hall. 2008 also saw the completion of the new Goldsmid House on Wilton Plaza in SW1. Two other residences that had been undergoing refurbishment over the past year re-opened in time for the start of term. Campbell House East, composed of six late-Georgian town houses on Taviton Street, has been completely modernised, and Hawkridge House on Warden Road, NW5 also underwent a complete makeover.



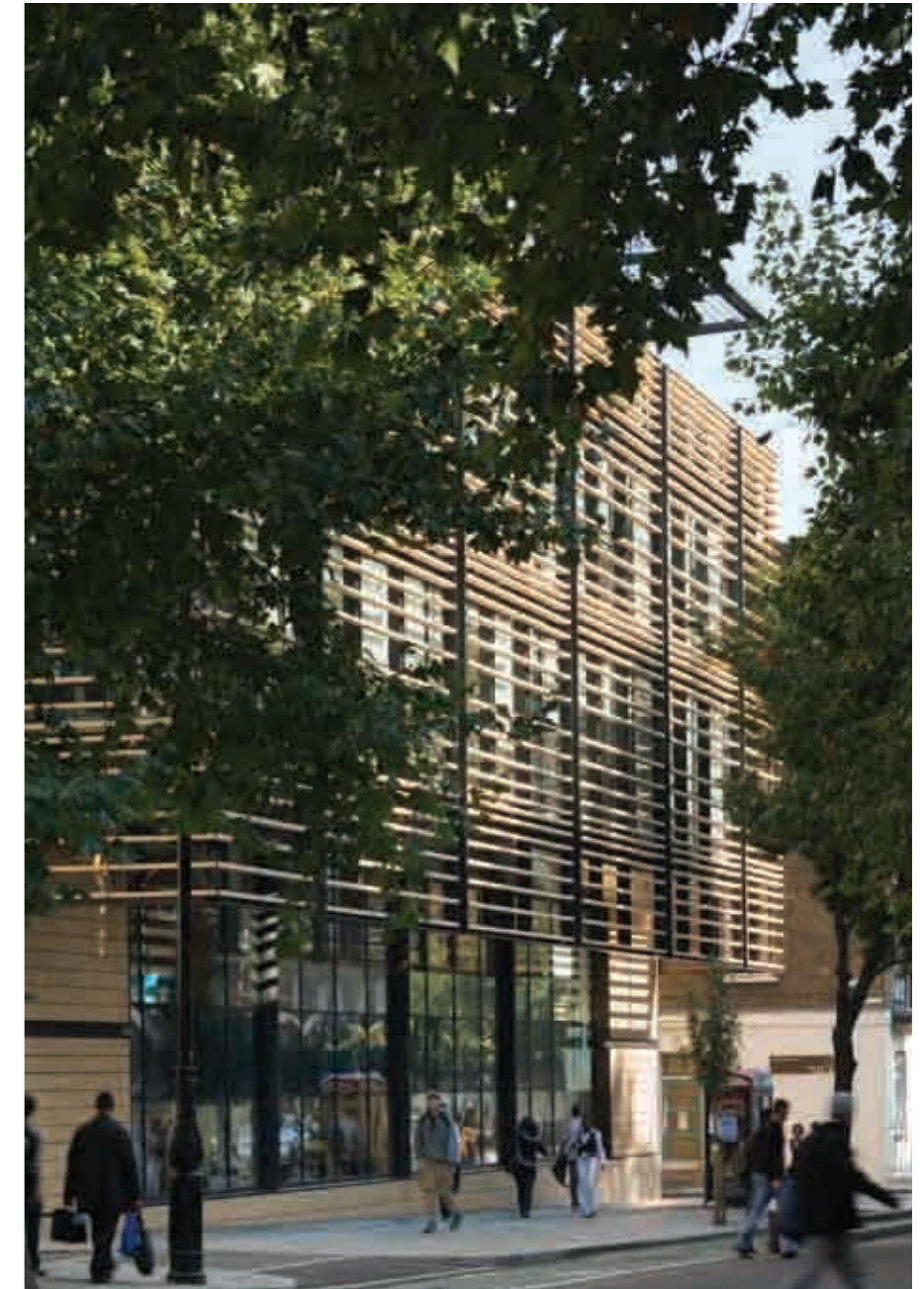
Ian Baker House

Library refurbishments celebrated

In October 2008, the launch of a Darwin exhibition in the Wilkins Library proved an ideal juncture to celebrate the refurbishment of the South Junction library. The spaces now provide specialised reading rooms for different subjects, and have already proved popular with students taking advantage of the new facilities. 2008 also saw the completed refurbishment of the Laws reading rooms in the Wilkins Library, while work was started at the DMS Watson Library to provide a new learning laboratory.

Engineering Front Building unveiled

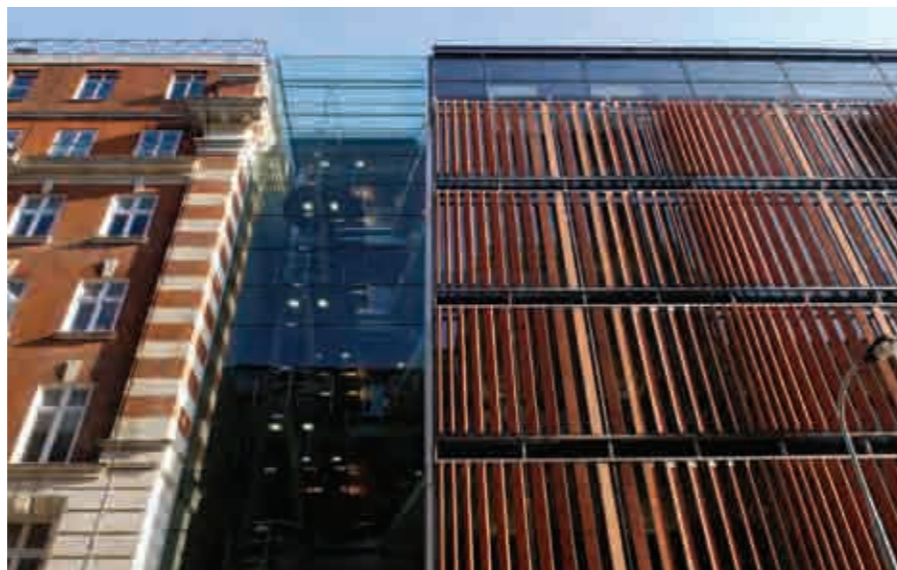
The £11.4 million Engineering Front Building on Torrington Place was opened in October at an official ceremony attended by the former Minister for Science, Lord Sainsbury. The building is designed to be a centre for collaboration between the university and the business community. It houses UCL's new Department of Management Science & Innovation as well as the university's entrepreneurship centre, UCL Advances.



The UCL Engineering Front Building

Clinical Neuroscience Centre

The £26 million Clinical Neuroscience Centre at Queen Square was opened in October. The centre is a partnership between the UCL Institute of Neurology and the National Hospital for Neurology & Neurosurgery. Researchers and clinicians from both institutions will now be brought under one roof at the centre, which will house both outpatient services and research facilities. The centre will promote world-class treatment of conditions such as epilepsy, Parkinson's disease, strokes and brain tumours. The development was part-funded by the National Hospital Development Foundation, which provided £8 million of the investment needed, and its state-of-the-art scanners were partly funded by the Wolfson Foundation.



Front facade of the UCL Cancer Institute

Materials Simulation Laboratory opened at UCL

UCL opened a new Materials Simulation Laboratory in March, bringing together 90 researchers and forming the largest concentration of materials modelling experts in the UK. Professor Mike Gillan, Director of the UCL Materials Simulation Laboratory, said: "Research at our centre, funded with £19 million in grants, covers a wide range of materials research including clean energy production, those that could play a role in climate change, and materials for future computing devices and for healthcare."

Fundraising and the UCL Campaign

During 2008, UCL undertook a significant review of the structure and progress towards its Campaign for UCL, which incorporates donations made through major gifts, annual fund, trusts and foundations, and legacy initiatives. UCL has now crossed the £100 million mark toward its goal of £300 million by 2014.

Gifts in excess of £500,000 during the year were; a £2 million pledge to the UCL Medical School; £1.6 million to establish the Samatha Dickson Brain Cancer Centre at the UCL Cancer Institute; \$2 million for the London Project to Cure Blindness at the UCL Institute of Ophthalmology; £590,000 towards Intensive Care Research; a legacy pledge of over £500,000 for the Gregory Foster Fund; and £500,000 to establish a Chair in Modern Dutch Studies.

Looking forwards, the Campaign will be aligned with the Grand Challenges vision for UCL research (see page 7). Donor cultivation and solicitation programmes are underway among different constituents in key centres around the world.

Reports And Financial Statements For The Year Ended 31 July 2008

FINANCIAL HIGHLIGHTS 07/08

CONSOLIDATED INCOME & EXPENDITURE ACCOUNT	2008 £m	2007 £m	Change %
Funding Council grants	193.8	178.8	8.4
Academic fees and support grants	107.8	97.8	10.2
Research grants and contracts	211.2	201.7	4.7
Other operating income	112.3	111.9	0.4
Endowment income and interest receivable	10.7	9.4	13.8
Total income	635.8	599.6	6.0
Share of income from joint ventures	(0.4)	(1.2)	
NET INCOME	635.4	598.4	6.2
TOTAL EXPENDITURE	634.5	590.4	7.5
Share of operating loss in joint ventures and associates	(0.6)	(0.7)	
Profit on disposal of subsidiary	5.2	-	
Profit/(loss) on disposal of tangible fixed assets	0.2	(0.2)	
(Loss)/profit on disposal of fixed asset investments	(0.2)	(0.2)	
Taxation	-	-	
Minority interest	0.5	0.4	
Transfer to accumulated income within specific endowments	(0.5)	(0.4)	
SURPLUS FOR THE YEAR	5.5	6.9	
CONSOLIDATED BALANCE SHEET			
Fixed assets	581.7	531.2	9.5
Endowment asset investments	65.5	74.2	(11.7)
Net current assets	35.5	45.1	(21.3)
Total assets less current liabilities	682.7	650.5	5.0
Non-current liabilities and provisions	(81.5)	(82.9)	(1.7)
Pension assets/(liabilities)	(5.9)	1.2	
TOTAL NET ASSETS	595.3	568.8	4.7
Represented by:			
Deferred grants	341.9	319.5	7.0
Endowments	65.5	74.2	(11.7)
Reserves	189.0	175.8	7.5
Minority interest	(1.1)	(0.7)	57.1

To read the 2007/2008 Financial Report in full, go to www.ucl.ac.uk/finance/finance_docs/report_accts.html

Professorial Appointments



Dr Shakeel Saeed
(Chair of Otology and Neuro-Otology)



Hugh Montgomery
(Chair of Intensive Care Medicine)

UCL Biosciences
Chair of Systems Biology:
Professor Jurg Bähler

UCL Chemistry
Chair of Organic Chemistry:
Professor James Anderson

UCL Ear Institute
Chair of Otology and
Neuro-Otology: Dr Shakeel Saeed

Chair of Laryngology:
Professor Martin Birchall

UCL Earth Sciences
Readership in Geology:
Dr Graham Shields

UCL Eastman Dental Institute
Chair of Restorative Dentistry
and Dental Education:
Professor Andrew Eder

Chair of Restorative Dentistry and
Evidence-based Healthcare:
Dr Ian Needleman

UCL Economics
Chair of Economics:
Dr Balázs Szentés

UCL Energy Institute
Readership in Energy and the Built
Environment: Dr David Shipworth

UCL Geography
Chair of Physical Geography:
Professor Chronis Tzedakis

**UCL Electronic & Electrical
Engineering**
Pender Chair of Nanoelectronics:
Professor Sir Michael Pepper

Thales UK / Royal Academy of
Engineering Chair of Radio
Frequency Sensor Systems:
Professor Hugh Griffiths

Chair of Communication Networks:
Professor George Pavlou

UCL Institute of Neurology
Chair of Magnetic Resonance
Neurophysics and Translational
Neuroscience: Dr Xavier Golay

Galton Chair of Human Genetics:
Professor Nicholas Wood

UCL Institute of Ophthalmology
Chair of Experimental
Ophthalmology:
Dr Shin-Ichi Ohnuma

GlaxoSmithKline/Fight for Sight
Chair of Visual Neuroscience:
Professor Matteo Carandini

**UCL Elizabeth Garrett Anderson
Institute for Women's Health**
Chair of Fetal Medicine:
Professor Kypros Nicolaidis

Chair of Obstetrics:
Professor Donald Peebles

Chair of Neonatology:
Professor Neil Marlow

UCL Laws
Chair of Property Law:
Professor Robert Chambers

Chair of Property Law:
Professor James Penner

UCL Mechanical Engineering
Chair of Naval Architecture:
Mr Paul Wrobel

UCL Mathematics
Chair of Applied Mathematics:
Professor Jean-Marc Vanden-
Broeck

UCL Medicine
Chair of Genetic Epidemiology:
Dr Aroon Hingorani

Richard Cristin Chair
of Hepatology:
Professor William Rosenberg

Chair of Intensive Care Medicine:
Dr Hugh Montgomery

Chair of Medicine:
Professor Patrick Maxwell

**UCL School of Slavonic
& East European Studies**
Sir Bernard Pares Chair of Russian
History: Professor Simon Dixon

UCL Statistical Science
Chair of Statistics:
Professor Ming-Yen Cheng

Chair of Statistics: Dr Sofia Olhede

UCL Division of Population Health
Leonard Cheshire Chair of
Disability and Inclusive
Development: Dr Nora Groce

UCL Division of Research Strategy
Chair of Applied Mathematics
and Computational Biomedicine:
Professor Alexay Zaikin



Stuart Robson
(Professor of Photogrammetry & Laser Scanning)



Francesca Cordeiro
(Professor of Retinal Neurodegeneration & Glaucoma Studies)



Hasok Chang
(Professor of Philosophy of Science)



Alena Ledeneva
(Professor of Politics & Society)

UCL Biochemical Engineering
Professor of Regenerative
Medicine Bioprocessing: Dr
Christopher Mason

UCL Cancer Institute
Professor of Medical Genomics:
Dr Stephan Beck

Professor of Molecular Medicine:
Dr Kerry Chester

UCL Cell & Developmental Biology
Professor of Cellular Imaging:
Dr David Becker

**UCL Civil, Environmental
& Geomatic Engineering**
Professor of Photogrammetry
& Laser Scanning: Dr Stuart
Robson

Professor of Space Geodesy:
Dr Marek Ziebart

**UCL Clinical, Educational
& Health Psychology**
Professor of Clinical Psychology:
Dr Tony Roth

UCL Computer Science
Professor of Wireless Systems:
Dr Stephen Hailes

UCL Division of Research Strategy
Professor of Sociology of Ageing:
Dr Paul Higgs

**UCL Electronic
& Electrical Engineering**
Professor of Electronic Devices:
Dr Richard Jackman

**UCL Epidemiology
& Public Health**
Professor of Epidemiology:
Dr Martin Bobak

UCL General Surgery
Professor of Surgery:
Mr Massimo Malago

UCL Geography
Professor of Physical Geography:
Dr Jonathan Holmes

Professor of Physical Geography:
Dr Philip Lewis

UCL Haematology
Professor of Immunogenetics:
Dr Steven Marsh

UCL Infection & Immunity
Professor of Rheumatology:
Dr Anisur Rahman

UCL Institute of Archaeology
Professor of Egyptian
Archaeology: Dr Stephen Quirke

UCL Institute of Child Health
Professor of Paediatric Nutrition:
Dr Atul Singhal

UCL Institute of Neurology
Professor of Neurology:
Dr Matthias Koepp

UCL Institute of Ophthalmology
Professor of Retinal
Neurodegeneration & Glaucoma
Studies: Dr Francesca Cordeiro

UCL Laws
Professor of Law:
Ms Alison Diduck

Professor of Law and Legal
Theory: Dr Rizwaan Mokai

UCL Mathematics
Professor of Mathematics:
Dr Leonid Parnovski

**UCL Medical Physics
& Bioengineering**
Professor of Medical Physics:
Dr Clare Elwell

UCL Medicine
Professor of Hepatology:
Dr Rajiv Jalan

UCL Mental Health Sciences
Professor of Social & Community
Psychiatry: Dr Sonia Johnson

**UCL Neuroscience, Physiology
& Pharmacology**
Professor of Neuroscience:
Dr Mark Farrant

Professor of Pharmacology:
Dr Lucia Sivilotti

UCL Physics & Astronomy
Professor of Astrophysics:
Dr Linda Smith

Professor of Physics:
Dr Mark Lancaster

Professor of Physics:
Dr Ferruccio Renzoni

UCL Political Science
Professor of Public Policy:
Dr David Coen

**UCL School of Slavonic
& East European Studies**
Professor of Comparative
Economics: Dr Tomasz Mickiewicz

Professor of Politics & Society:
Dr Alena Ledeneva

**UCL Science
& Technology Studies**
Professor of Philosophy of
Science: Dr Hasok Chang

UCL Space & Climate Physics
Professor of Physics:
Dr Christopher Owen

**UCL Surgical
& Interventional Studies**
Professor of Plastic Surgery:
Mr Peter Butler

**Wellcome Trust Centre for the
History of Medicine at UCL**
Professor of the History of Modern
Medical Sciences: Dr Tilli Tansey

**Wolfson Institute for Biomedical
Research at UCL**
Professor of Biological & Medicinal
Chemistry: Dr David Selwood



Faculty	Academic and Research Staff (as of October 2008)	Undergraduate Students (2007/08)	Graduate Students (2007/08)
UCL Arts & Humanities	186	1,957	865
UCL Biomedical Sciences	1,872	1,299	1,849
UCL Built Environment	122	679	825
UCL Engineering Sciences	383	1,294	1,087
UCL Laws	61	556	466
UCL Life Sciences	596	2,368	1,010
UCL Mathematical & Physical Sciences	440	1,843	559
UCL Social & Historical Sciences	340	2,160	1,353
Total	4,000	12,156	8,014

Members of UCL Council

Professor Iain Borden
 Professor Robert Brown
 Ms Anne Bulford (Treasurer)
 Ms Philippa Foster-Back
 Professor Malcolm Grant
 Lord Hart of Chilton
 Mr Rob Holden
 Mr Mark Knight
 Dr Nikos Konstantinidis
 Mr Nathanael Macdonald
 Ms Catherine Newman
 Ms Vivienne Parry (Vice-Chair)
 Ms Katharine Roseveare
 Dr Benet Salway
 Mr Ed Steward
 Professor Chris Thompson
 Dr Andrea Townsend-Nicholson
 Sir Stephen Wall (Chair)
 Professor Maria Wyke

Secretary to Council

Mr Tim Perry

UCL Officers

Visitor
 The Master of the Rolls

Chair of Council
 Sir Stephen Wall

Vice-Chair of Council
 Ms Vivienne Parry

Treasurer
 Ms Anne Bulford

President and Provost
 Professor Malcolm Grant

Vice-Provosts

Academic and International
 Professor Michael Worton

Administration
 Miss Marilyn J Gallyer

Enterprise
 Professor K Michael Spyer

Health
 Professor Edward Byrne

Research
 Professor G David Price

Pro-Provosts

Africa
 Professor Volker Sommer

China, Hong Kong and Macau
 Professor Z Xiao Guo

East and South East Asia
 Professor Derek A Tocher

Europe
 Professor Michael Wilson

North America
 Professor CJ Lim

South Asia and the Middle East
 Professor Vince C Emery

Deans of UCL Faculties

Arts and Humanities
 Professor Henry Woudhuysen

Biomedical Sciences
 Professor Edward Byrne

Built Environment
 Professor Christine E Hawley

Engineering Sciences
 Professor Bernard F Buxton

Laws
 Professor Dame Hazel Genn

Life Sciences
 Professor Peter G Mobbs

Mathematical and Physical Sciences
 Professor Richard Catlow

Social and Historical Sciences
 Professor Stephen R Smith

Other UCL Officers

Academic Registrar
 Mr Christopher Hallas

Dean of Students (Academic)
 Professor Michael Ewing

Dean of Students (Welfare)
 Dr Ruth Siddall

Director of Academic Services
 Mr Tim R Perry

**Director of Administration,
 UCL Medical School**
 Mr Andrew J Whalley

**Director of Centre for the Advancement
 of Learning & Teaching**
 Ms Brigitte Picot

**Director of Development
 & Corporate Communications**
 Mr Arthur G Wasserman

Director of Estates & Facilities
 Mr J Richard Furter

Director of Finance
 Mrs Alison C Woodhams

Director of Human Resources
 Ms Sarah E Brant

Director of Information Services
 Mr Chris Randle

Director of Information Systems
 Mr Robert I A Clark

Director of Management Systems
 Dr Will Miller

Director of Media Services
 Mr Jeremy C Speller

Director of Internal Audit Services
 Mr Peter J McCarroll

Director of Library Services
 Dr Paul Ayris

Director of Research Planning
 Dr Mary E Phillips

Head of Graduate School
 Professor I David L Bogle



Review 2008

