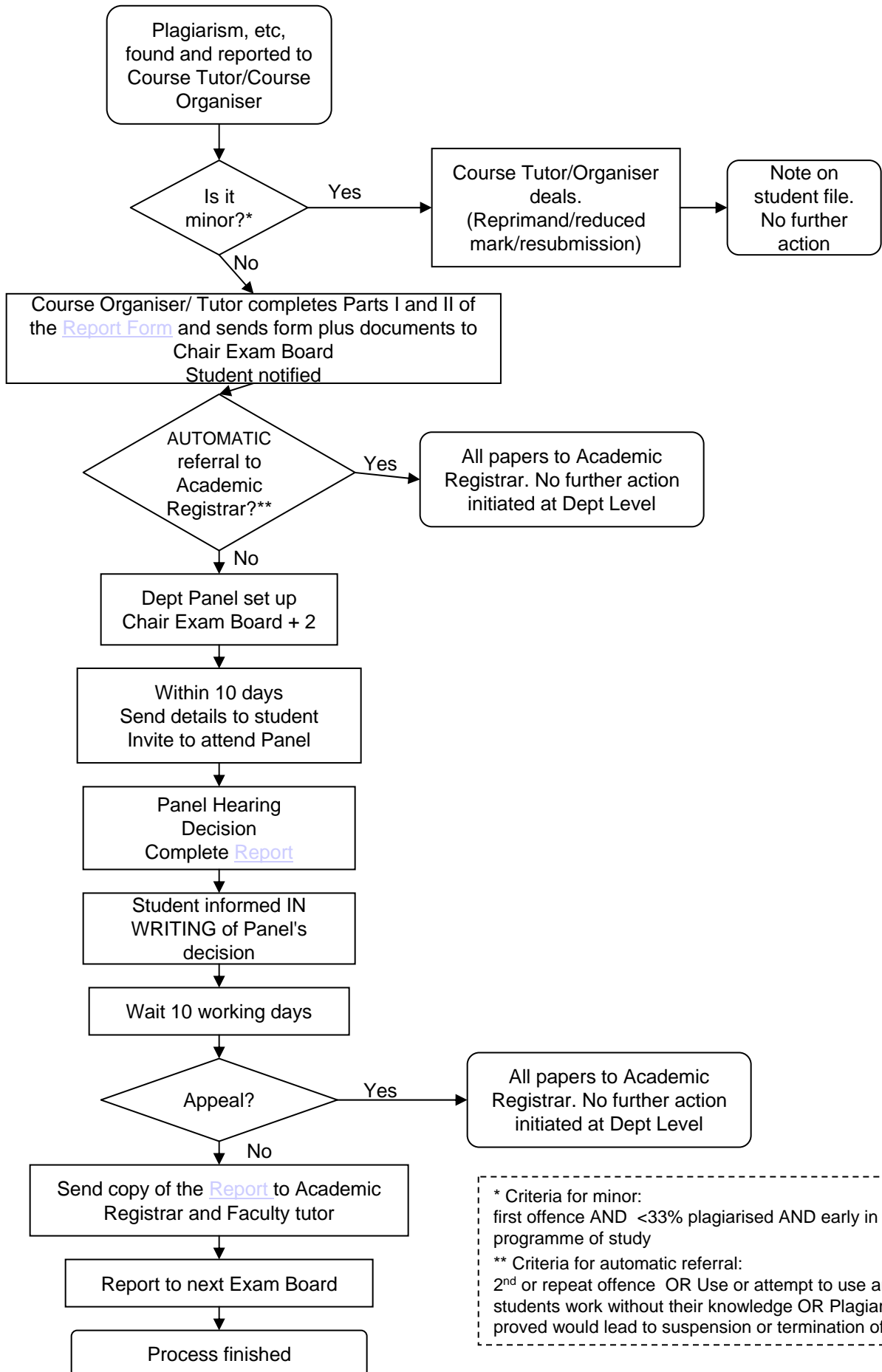


**FLOW CHART SUMMARISING DEPARTMENTAL ACTIONS IN NEW
PLAGIARISM/COLLUSION/ FALSIFICATION PROCEDURE**



* Criteria for minor:
first offence AND <33% plagiarised AND early in programme of study

** Criteria for automatic referral:
2nd or repeat offence OR Use or attempt to use another students work without their knowledge OR Plagiarism that if proved would lead to suspension or termination of study