

COLLABORATIVE DESIGN GATEWAY WORKSHOP

CD-G Workshop is a knowledge exchange project, for building sustainable communities in the Thames Gateway and the wider South-East. The experimental project explores the potential of collaborative urban and architectural designs through academic, expert and community engagements.

The UrbanBuzz funded project was carried out by the University of East London, School of Architecture and the Visual Arts, Architecture + Urbanisms Projects Office, July - November 2008.

UrbanBuzz is a University College London (UCL)-led programme whose prime partner is the University of East London.

Project Manager, Author and Editor: Christoph Hadrys.
Student project texts, co-authored by each student.
Publication December 2008

www.cd-g-workshop.blogspot.com

© University of East London (UEL)
School of Architecture and the Visual Arts (AVA)
4-6 University Way
London E16 2RD
UK

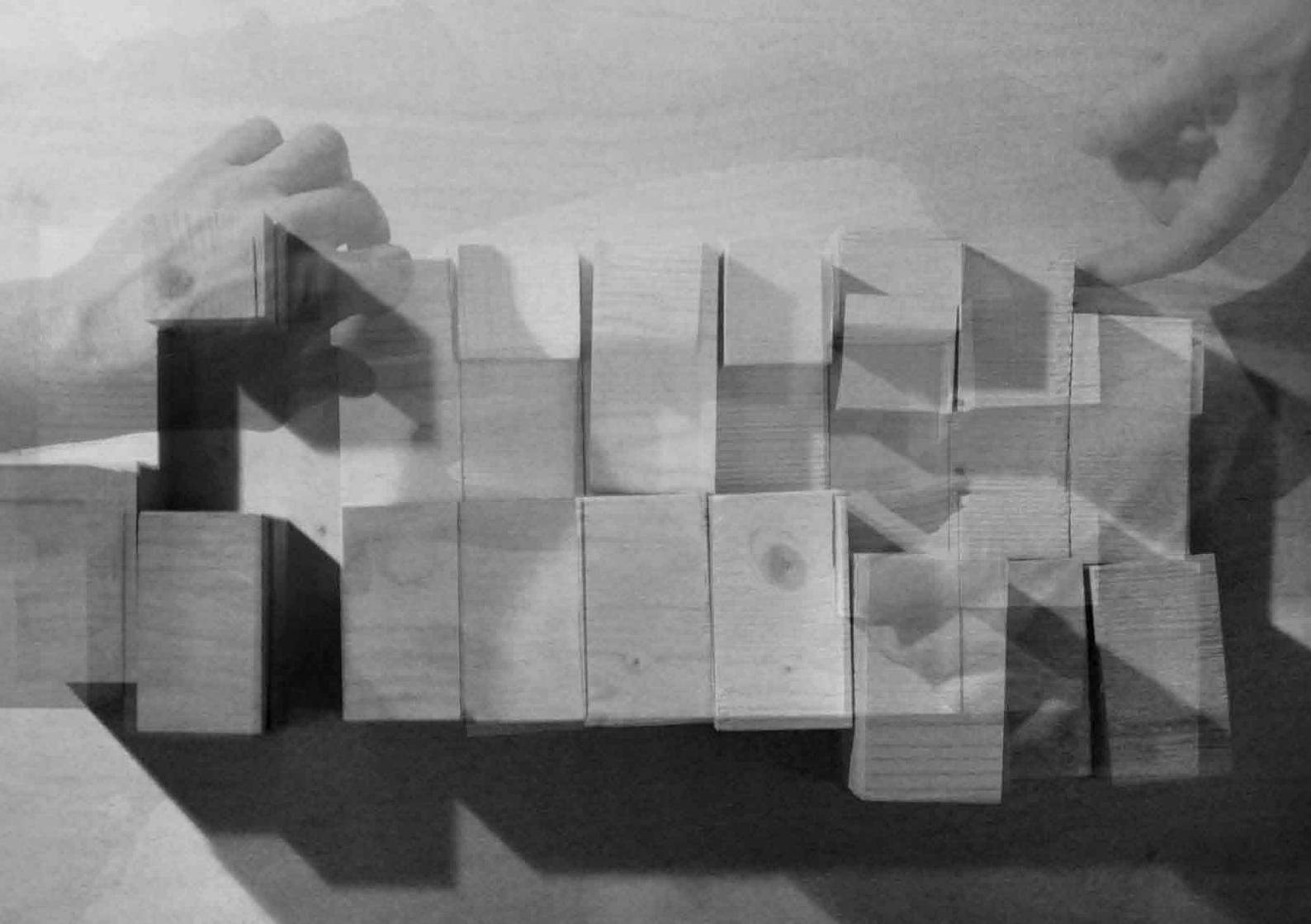
UEL
University of
East London

AVA
www.uel.ac.uk/ava

CONTENTS

P

Introduction	05
Partners	06
Project CD-G Workshop	08
Planning and Design Methodology	08
Stakeholders	10
Time-Table	12
Selecting Student Projects	14
Community Workshop at the AVA	19
Community Workshop in Beckton	22
Six Student Projects in Detail	24
Charlotte Harris (Olympic Fringe in Stratford)	24
Colin O'Sullivan (Beckton Savage Gardens)	28
Richard Stevenson (Beckton Mitchell Walk)	34
Masamori Magota (Beckton Park)	38
Yonghyn Ryu (Beckton/ Canning Town)	44
Irene Benjumea (North Greenwich Peninsula)	48
Information Events	54
Pat Dunphey Comment	54
Partners' Comments	56
Roger Zogolovich	56
Eike Sindlinger	57
Dominic Church	58
Outlook	60
Bibliography and Images	62



INTRODUCTION

There is no established way to employ collaborative methods of designing with community participation, in the Thames Gateway. Currently applied architectural design methods open up knowledge transfer gaps between planners, designers and users, because of their predetermined processes and outcomes. Often, community workshops are just consultations, leaving participants not in the position to ask how. This denies a potential process of collaboration and engagement.

The project Collaborative Design – Gateway Workshop aimed at enhancing knowledge exchange, rather than transfer. It enabled a series of innovative set-ups and adventurous community workshops to test and demonstrate methods of designing with community participation, through collaborative designs, critical expert guidance and community engagement.

The project team was set-up to substantially enhance initial workshop input, open process and outcome as well as possible future scenarios. Partners in the project are Roger Zogolovich from AZ Urban Studio, Eike Sindlinger from ARUP Urban Design, Dominic Church from CABE and Zahira Nazer from Newham Regeneration.

As preparation, collaborations demand specific designs, which incorporate elements of participation and address design, decision making, building processes and management.

We selected and prepared six UEL students' architectural and urban design projects from the School of Architecture and the Visual Arts. The projects from Diploma Unit 2 and 9, as well as MA Alternative Urbanisms and Masters in Architecture, cover a range of scales, from urban through to building and architectural details. They are located in Beckton, Stratford and North Greenwich, the London end of the Thames Gateway.

For the main event, we anticipated a two day workshop at the School of Architecture and the Visual Arts at the UEL Docklands Campus, in August 2008. By playing through design scenarios, acceptance and feasibility, the part-simulation of possible designs was successful in unexpected ways. It has led to broader thinking about the subject and has led to a further community workshop in Beckton, in October 2008.

The feedback from local communities, partners and academics, has helped us to articulate a series of objectives concerning collaborative and participatory design processes, as well as current planning systems. The project was a mutual learning which opened discussions about the social and spatial future of our immediate context in the Thames Gateway and cities in general.

This publication documents the CD-G Workshop preparation, workshop outcome, the student projects and potentials for the future.

PARTNERS

University of East London

School of Architecture and the Visual Arts, Architecture + Urbanisms Projects Office. Architecture at UEL is hands-on and has a longstanding preoccupation with urban and landscape intervention and regeneration.

Christopher Hadrys

The CD-G Workshop management included project preparation, coordination and implementation of academic, professional and community matters. In addition, he contributed with expertise in technology, architecture and urban design.

Signy Svalastoga

As former Subject Director in UEL Architecture, she informed all stages of the project with considerable experience in teaching and practice.

www.uel.ac.uk/ava
www.cd-g-workshop.blogspot.com

UrbanBuzz

UrbanBuzz is a University College London (UCL)-led programme whose prime partner is the University of East London.

UrbanBuzz - 'Building Sustainable Communities' is a two year programme that aims to develop new ways of delivering sustainable forms of development and communities in London and the wider Southeast region.

It is bringing together academics and practitioners in the built environment sector to convert research results into new practical tools and processes.

Gemma Moore and Tina Crombie

As part of the UrbanBuzz team, they helped to set-up and guide the project through every situation.

www.urbanbuzz.org

AZ Urban Studio

AZ Urban Studio provides planning consultancy, as well as property and development services.

The innovative company has worked on small and large urban scales in London and the UK.

Roger Zogolovich

As director of AZ Urban Studio, he set collaborative design in relation to current development practice. By pointing out the market potentials of bottom-up developments, he contributed to the CD-G Workshop with an innovative and holistic developer approach from urban scale through to building components. Especially relevant in the current unstable economic situation, his financial expertise enriched the project, far beyond current architectural and urban debates.

www.azurbanstudio.co.uk

Arup Urban Design

Arup is a global firm of designers, engineers, planners and business consultants providing a diverse range of professional services to clients around the world. With this fully integrated approach Arup is the creative force behind many of the world's most innovative and sustainable designs for the built environment.

Eike Sindlinger

As experienced urban designer and active member of the workshop team, he informed the project with enhanced specialist expertise in sustainable urban design and architecture, integrating social, economic and environmental aspects, as well as urban technology. He also helped with the identification of local risks and potentials in the Thames Gateway.

www.arup.com/integratedurbanism

ARUP

CABE

The Commission for Architecture and the Built Environment (CABE) is the government's advisor on architecture, urban design and public space in England.

Dominic Church

Being responsible for Building for Life at CABE and with his considerable experience in design workshops, he introduced design criteria and workshop mechanisms. Before and during the workshop, he supported the communication of architectural and urban quality, in relation to urban developments and government policies of UK-wide and international relevance.

www.cabe.org.uk
www.buildingforlife.org



Zamuch Ltd

Canning Town and Custom House Regeneration Project Team

The company works intensively on the regeneration of the Canning Town and Custom House area, in the London Borough of Newham.

Zahira Nazer

As part of local planning and active member of the community workshop team, she acted as the local associate with access and contacts to local communities and Local Authorities, in the Canning Town/ Newham area. She contributed with specific urban design agendas of ongoing local developments and planning.

www.newham.gov.uk

PROJECT CD-G WORKSHOP

Planning

The CD-G Workshop is a holistic approach with long-term objectives and it addresses social, economic, environmental and institutional sustainability. It is a distinct local place making exercise, situated in East London's existing diverse communities, spatial habits and conditions.

As Anne Power and John Houghton described in their book *Jigsaw Cities*: *“The Thames Gateway, has the potential for providing hundreds of thousands intermediate and affordable homes and, in the process, salvaging polluted, ex-industrial brownfield land. The real issue, however, is whether it will regenerate and densify underpopulated, run-down and neglected communities in the East End. The Thames Gateway is not an empty flood plain waiting for development. It is already home to more than 2.5 million people in at least 250 distinct communities.”*¹

Locally, there is no established way to integrate a diverse range of stakeholders in community workshops. Current practice fails to deliver collaborative and process orientated designs and there is an inability to adapt provision and use to current demands and changing needs.

Recent government papers have demanded to: *“improve public participation across the entire process by providing better opportunities for public consultation and engagement at each stage of the development consent process; improving the ability of the public to participate”*²

Most current workshops collect information or they test pre-determined processes and outcomes against community acceptance. Community workshops are not regarded as key drivers in architectural or urban design. As a result, local communities increasingly do not trust participation processes and show *consultation fatigue*³ or disinterest.

Design Methodology

Preparation, workshops and possible outcome present a series of challenges to designers, planners and developers, because necessary methodology differs from the ones currently used in design.

The preparation for collaborative processes requires designs, which allow both, designing in participation and also for participation. Designing in participation refers to community workshops and active involvement in design processes and decision making at a wider level. Designing for participation refers to set-ups by designer or planners, which enable local communities or individual people to plan and build into. Either way, this demands principles and enabling frameworks with the ability to support open, yet guided architectural scenarios. This could be articulated in the modularity or flexibility of designs, to allow people into processes. Because such methods are not established, the involved complexities, time-scales, risks and economic constraints are currently too high for many practices. Academic ways of working and involvement does not have such constraints. Design research and innovation in the field can pave the way for new methodologies and potential areas of interest.

“The quintessential urban paradox comprising confrontation and promise, tension and release, social cohesion and exclusion, urban wealth and intense squalor, is a profoundly spatial equation with enormous democratic potential. ... As architects, planners and city-makers we engage every day in creating the very infrastructure that can either enable social interaction or become a source of exclusion and domination.”
Richard Burdett and Miguel Kanai in *Cities, Architecture and Society*.⁴

In 2003/04, Diploma Unit 2 participated in the Elemental housing competition and traveled to Chile, to study an innovative approach to place-making and housing through community engagement. The Chile-specific and now build example of Iquique by Elemental (www.elementalchile.cl) has demonstrated the value of collaborative and participatory design mechanisms, especially for communities in need. On urban scale, basic housing frameworks were laid-out with community engagement, according to guiding urban design principles. Later in building scale, physical frameworks and further guide-lines made individual extensions and adjustments possible.

The six student projects use such principles and allow scenarios with the ability to respond to current and changing communities, public need, spatial requirements, diverse cultures, income, family sizes or other demographic issues. Developments in the Thames Gateway raise also environmental issues, like resources of expansion, flooding or unstable ground conditions.



Existing Housing in Beckton/East London, image by Colin O'Sullivan

Stakeholders

“An active participatory democracy will mean investing in and promoting the open exchange and sharing of knowledge. By tapping into people’s knowledge, expertise and experience on a wide range of local issues, this investment can provide better end-results, while also saving time and money. The process of negotiation, mediation and joint learning can also help foster a sense of ownership and care within a neighbourhood which will reap dividends beyond the parameters of the immediate decision-making requirements.” Urban Task Force Report ⁵

By using specific design principles and frameworks for architectural developments, the CD-G Workshop enabled a variety of stakeholders to engage in collaborative and process orientated designs. The main stakeholders are local communities, invited partners from development and planning as well as academics. The stakeholders combined diverse resources, methodologies and knowledge, to invigorate design processes and scenarios.

Especially in the Thames Gateway and East London, local communities or users of urban public and private spaces, often had difficult or wrong kind of access to urban living. In the workshops, members of local communities, like community groups, families or young people contributed with insightful knowledge about local conditions, desires, long term needs and opportunities. The project was set-up to help communicate their views on design. The collaboration addressed diverse challenges, like questions of scope, practicability and limits of participation.

Our partners, from development and planning contributed with knowledge in architectural and urban design, in relation to current practice and future developments. They guided and informed other participants and workshop processes. The project might unlock potentials, like niche markets, for practices, small scale developers or industries. As a further workshop result, we expanded notions of planning for functional public and private environments.

Academic experts and students contributed with knowledge in the subject area, educational expertise and vision. The student projects are crucial in this process, as the design allowed hands on discussions. The work added an intrinsic spatial component visualising possible scenarios, of how it is to be there and how does it function. The CD-G Workshop has expanded institutional potential to further our creativity, engagement and scope.

Although a relative small project, the CD-G Workshop has the potential to make a difference, by demonstrating alternative and synergetic approaches to pressing questions, of how to design and build integrated and enjoyable communities. The project intended to unlock potentials and create opportunities for a variety of people. Successful application and demonstration, might turn collaborative design into an exemplary role model, useable by local communities, developers, planners and academics.

Economic Sustainability

- Benefit from stakeholders' potential roles and synergies through collaborative logic
- Shared and enhanced exchange of knowledge
- Higher levels of economy of means
- Process related design and market scenarios, closer to ongoing and changing income, household sizes, demographics, spatial requirements and economics (densification etc.)
- Unlocking niche-markets and potentials for small and medium sized house-builders, developers and building industry, with higher independence from major changes in the market

Social Sustainability

- With collaborative design, enhanced communication and knowledge exchange, initiating public identity
- Understanding and application of shared spatial and social facilities, like playgrounds, green, communal etc.
- Long-term involvement and strategy for communities and place making
- Adaptability to current and ongoing needs, long-term adequate designs for a range of issues, like user habits, cultures and diversities
- Higher levels of personal and spatial articulation, within common standards, tolerances and frameworks

Environmental Sustainability

- Understanding and application of shared spatial management and resources, like water, energy, transport etc.
- Better communication and understanding of wider environmental issues, like flooding, unstable ground conditions, CO² - emissions, ecological footprint, light etc.
- Structures to be re-inhabited and reused, cycle of means



Existing open land in North Greenwich, image by Irene Benjumea

Time-Table

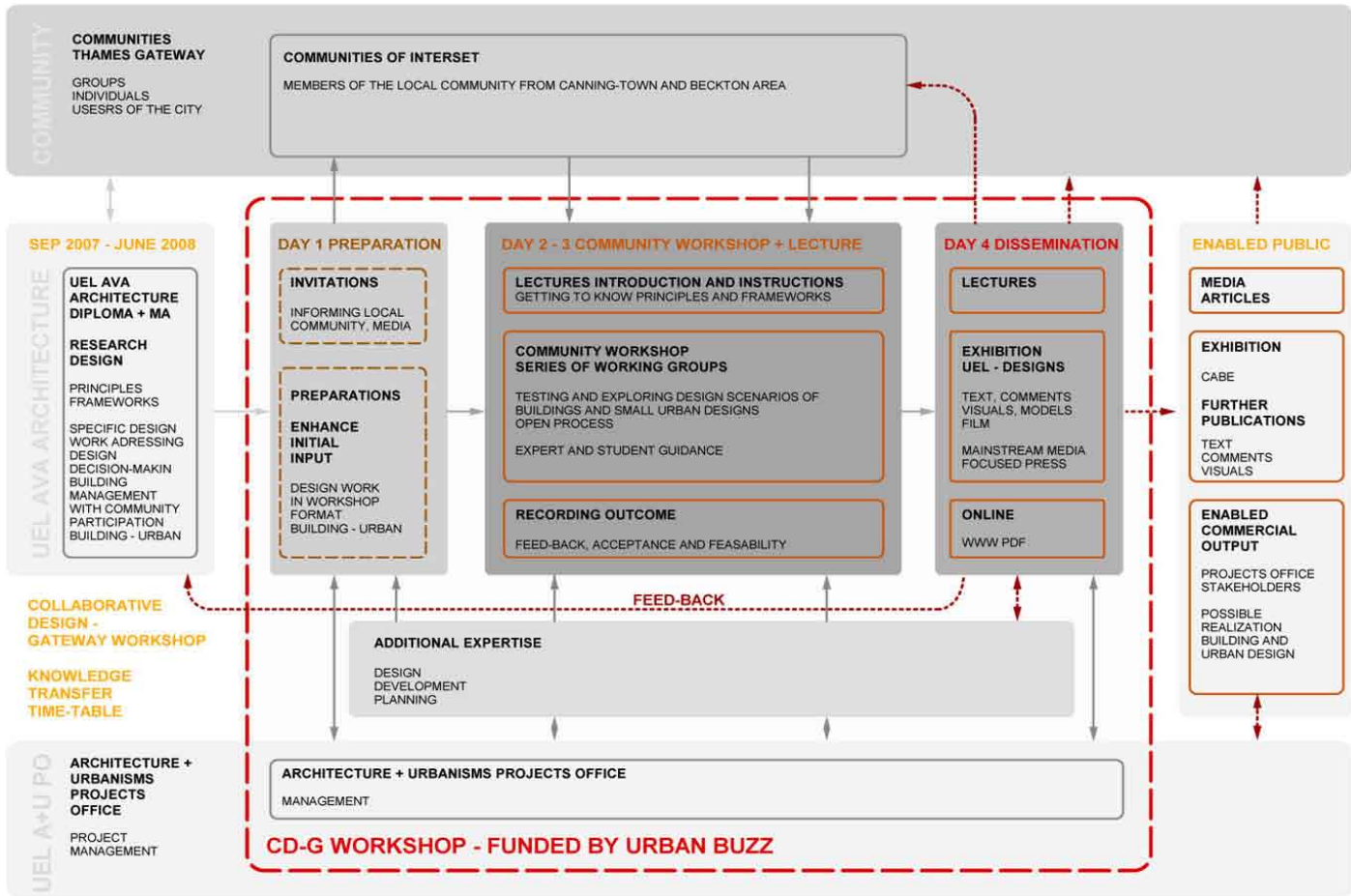
The CD-G Workshop consists of a lead-in time, the main UrbanBuzz funded project and the follow up period.

During the lead-in time, we organised both a specific academic way of working and UrbanBuzz. Both demanded a longer process of communication, understanding and a series of clarifications. As the used design methodology is not common standard, the students worked intensively on projects, placed in local communities. For example, they tested individual designs with members of the local community in public spaces. Some projects had rules similar to games which allowed a set of controlled but open ended outcomes.

The main UrbanBuzz funded events had to be within the academic summer break, not to disturb assessments. We anticipated a time frame of four month for three distinct phases. In the first phase, we set the agenda for the project, selected student projects and prepared the main event. In the second main phase, we planned a two day community event. As the project turned out to be different than anticipated, we stretched this phase into October, with another event in Beckton. The third phase included two exhibitions and lectures as feed-back, one in the Building Centre in London and one in the AVA at UEL.

For the follow up period, we anticipate a series of feed-back events, communicating the results to a wider audience. This would include an event at CABE and a Road Show. Please check www.cd-g-workshop.blogspot.com for further information.

Diagram to the right, anticipated timetable, illustrating stakeholder relationships before, during the UrbanBuzz funded period and after.
Illustration by Christoph Hadrys



Selecting Student Projects Wednesday 17.7.2008

Participating Partners: Roger Zogolovich and Chris Lloyd from AZ Urban Studio, Eike Sindlinger from ARUP Urban Design, Dominic Church from CABE and Zahira Nazer from Newham Regeneration.

Together with our partners, we set-up and refined agendas for the community workshops and selected six student projects out of a total number of twelve from different academic programmes.

Roger Zogolovich raised the first question that would guide the main agenda. *“What legitimises this collaboration as an experiment, an adventurous project?”* He also sketched out an answer by saying: *“The project could be seen as a provocation, rather than an endorsement of current state of play in developing architecture and cities. It is about finding different and alternative methods of developing architecture as a bottom-up approach. With a current economic slow-down, models such as micro finance or community banking from developing countries could be interesting, as a collaborative process-delivery mechanism. It is about finding a market for collaborations of this kind.”*

Dominic Church expanded on this: *“The collaborative work could fill vacuums within current development structures, spatially and organisationally. This could create very unique identities.”*

It was commonly agreed that the workshop is not a consultation. It has to be a playful exploration, interaction

and recording of knowledge exchange. The main two day event is a kind of educational process, where people should be engaged in an interactive process. Dominic Church added: *“If people find it difficult to engage or reject a scheme, they could positively reject work ‘if not this, what then?... I think it would be good to do this’ The workshop has to be set-up to facilitate and encourage such processes.”*

We all concluded, that the approach to development and regeneration lies in the empowerment of people to be part of design, decision making, building and management. Deeply concerned with social, economic and environmental issues, all selected projects addressed bottom-up approaches and add immediate and long-term value to people’s life in a very articulated manner.

Afterwards, the limited number of projects allowed focused preparations as well as clear and legible set-ups, with one workshop table per project. For each project we prepared a number of laminated A1 sheets, allowing people to draw on them with removable felt pens. The A1 sheets showed maps of location, photos of existing conditions, perspectives and other clear and simple drawings, illustrating the project. In addition, we prepared questionnaires and other means of recording. Furthermore, we build simple and modular timber models for each project in scale 1:100, to allow immediate understanding and a playful spatial engagement.

Discussing projects, from left to right: C. Hadrys, James Lim, Roger Zogolovich, Zahira Nazer, Yunghyun Ryu, Rob Houmoller, Dominic Church, Eike Sindlinger and Chris Lloyd, image by Richard Stevenson



Charlotte Harris, MA Alternative Urbanisms —
2012 Olympic Site, Boundary Development in Stratford/London

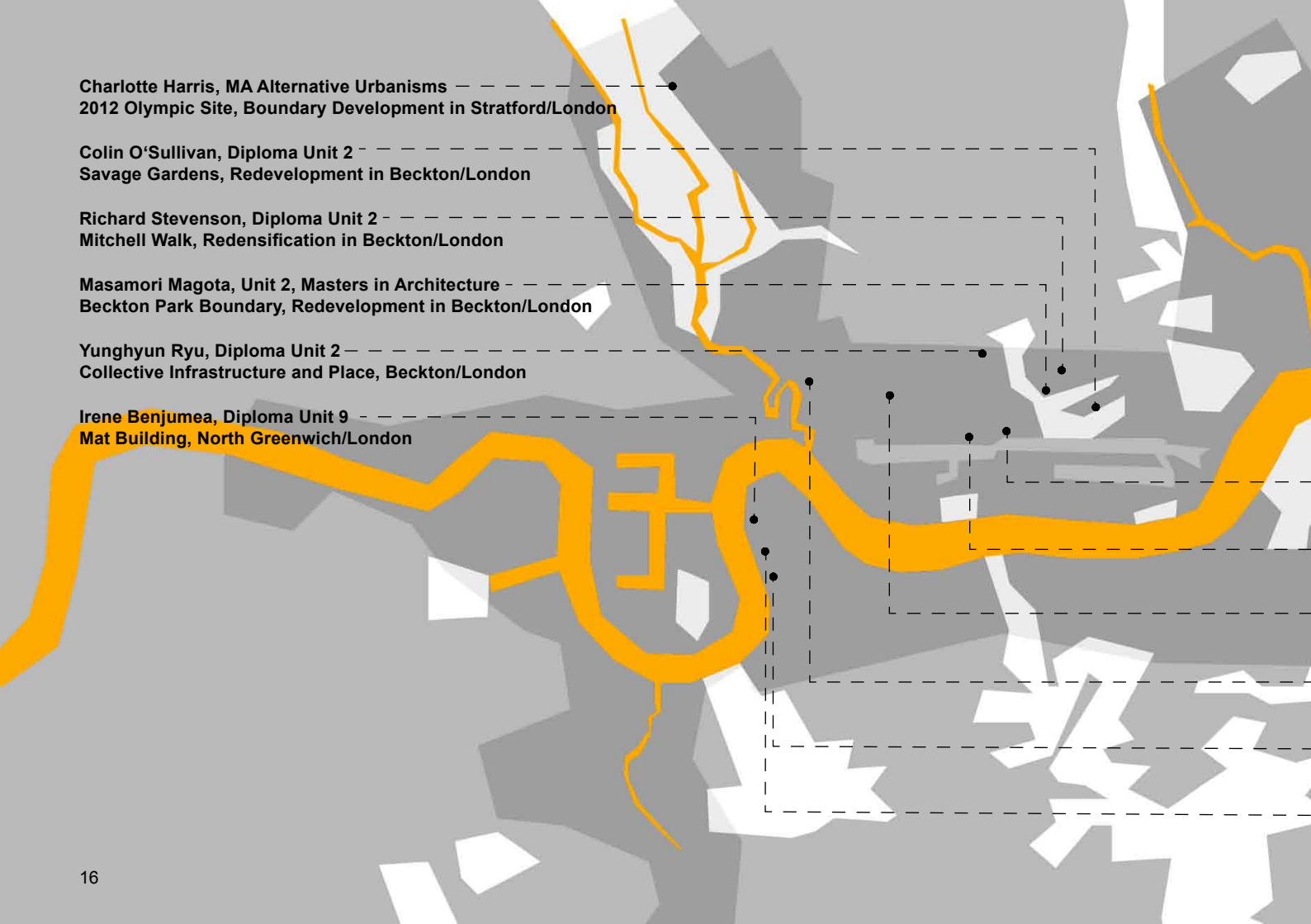
Colin O’Sullivan, Diploma Unit 2 —
Savage Gardens, Redevelopment in Beckton/London

Richard Stevenson, Diploma Unit 2 —
Mitchell Walk, Redensification in Beckton/London

Masamori Magota, Unit 2, Masters in Architecture —
Beckton Park Boundary, Redevelopment in Beckton/London

Yunghyun Ryu, Diploma Unit 2 —
Collective Infrastructure and Place, Beckton/London

Irene Benjumea, Diploma Unit 9 —
Mat Building, North Greenwich/London





— — — Rob Houmoller, Diploma Unit 2
City Farm, Development in Royal Albert/London

— — — Marco Leal, Diploma Unit 2
Framework Planning, Royal Albert/London

— — — James Lim, Diploma Unit 2
Navigators, Development in Canning Town/London

— — — Jane Clossick, MA Alternative Urbanisms
Housing Estate and Urban Redevelopment in Canning Town/London

— — — Rami-Risto Eraphoja, Diploma Unit 9
Mat Building, North Greenwich/London

— — — Nicholas Crispin, Diploma Unit 9
Interlocking Housing, North Greenwich/London



Main Community Workshop at the AVA, Day 1 Wednesday 20.8.2008

The CD-G Workshop developed quickly into three different issues - high risk of low attendance, feasibility of student projects and local planning.

Prior to the workshop, the initial risk of a possible low attendance was addressed with a series of measures: invited over 30 community contacts, pinned-up over 50 posters in key locations like shops and community centres, etc, handed out leaflets and talked to approximately 350 people with positive feed-back and talked to further 800+ people, placed around 1200 leaflets in letter boxes locally, contacted Newham Recorder, Greenwich Mercury, London Architecture Diary, Gumtree and the local Blast Radio.

All partners, students and UEL staff were at the AVA to start the workshop at 10.00 am. No member of the local community came to the workshop on that day.

After critical self-assessment, we concluded that the distanced location of the AVA didn't integrate people enough. Furthermore, holiday times and the lack of drivers in the community may have contributed to the situation.

For the rest of the day, we had intensive and long conversations about the workshop and the students' work. We

Participating partners: Roger Zogolovich, Eike Sindlinger, Dominic Church and Zahira Nazer. Students from UEL: Charlotte Harris (image), Colin O'Sullivan, Richard Stevenson, Masamori Magota, Yonghyn Ryu, Irene Benjumea and Jane Clossick, as well as Marco Leal and Zehra Abidi. From UEL: Christoph Hadrys and Signy Svalastoga.

discussed three student projects, by Masamori Magota, Irene Benjumea and Colin O'Sullivan, in detail. The projects and the discussions are further explained in the following chapter 'Six Student Projects in Detail'.

We looked at two different sides of the student projects.

First we discussed the meaning of such work for local people in the Thames Gateway. As all partners are involved in ongoing local designs, they gave feed-back on how it would be to have such projects. Neglected and inactive communities would have to engage in intensive planning and design, as well as building. This is currently not the case, but could be a key invigorating mechanism to engage communities and hence create long term solutions and forms of sustainability.

Secondly and in addition to community engagement, the CD-G Workshop addresses also local planning. The projects employ planning mechanisms of temporariness and tolerance, allowing flexibility, yet definition of maximum parameters. Local authorities use such mechanisms only to a very limited extend and wouldn't realise such projects currently.

Roger Zogolovich pointed out, that "the Thames Gateway is in some respects a condition of freedom" offering unique opportunities for such projects. Everybody acknowledged "the high value and importance of comments". The level of conversations on planning, development and architectural design opened up the scope of the workshop and the importance of the students' work.

A critical self-assessment of the day led to a number of further considerations - to bring the workshop to the community and to bring the workshop outcome to key members of planning.

Main Community Workshop at the AVA, Day 2 Wednesday 21.8.2008

Four members of the local community from Beckton attended the workshop, for the whole day. Enriched by conversations on the 20th August, we presented the workshop concept and the student work to them. In particular, the work by Colin O'Sullivan and Richard Stevenson was close to where the attendees live. The projects and the discussions are further explained in the following chapter 'Six Student Projects in Detail'.

All participants brought in different experience, opinions and ideas. In the beginning, we asked questions about local necessity and value of urban and architectural projects in general. On one side, the questions allowed us to filter out potential desires and actual problems. On the other side, this allowed us also to introduce possible solutions through the very potentials of design. We avoided prefabricated opinions and complete rejection of student projects, that way.

As the conversations gained momentum, some initial scepticism and misunderstanding vanished. The process of playing interactively through the projects, by allowing open outcomes, proved to be a key mechanism in the workshop. For local people, a process of understanding projects and an element of taking over some form of control allowed them and us to grow beyond what we already know. It allowed an immediate learning, critical discourse and to some respect also ownership and identification. Members of the local communities regarded the projects more like a tool to build, rather than a building in itself.

The contributions were diverse and rich. We were surprised how good local people could read themselves into the projects. On one side, the critical views allowed us to review the work and see it from a sharper angle. This is important to us, as certain issues can be only judged by local communities. On the other side, they could see the opportunities arising from such projects and their optimism was encouraging.

The attending people from the local community were highly interested in further involvement. Together with them, we planned to bring the work to other members of the community in Beckton, as the location of the University might have been a key barrier for people to attend the first workshop. The attendee Mr Dias is running the local table tennis club in the Beckton Community Centre and Church. We were planning one further event, to take place there, in the beginning of October 2008. We planned to test all student work, as we required wider feed-back to gain a better understanding of feasibility and appropriateness of all projects.

Participating members of the local community: Pat Dunphey and Emma Guzari as well as Mr. and Mrs Diaz. Students from UEL: Charlotte Harris, Colin O'Sullivan, Richard Stevenson, Masamori Magota, Yonghyn Ryu, Irene Benjumea and Jane Clossick. From UEL: Christoph Hadrys



Community Workshop in Beckton Saturday 11.10.2008

The workshop was located in the Sports Hall of the St. Marks Community Centre and Church in Beckton. Six tables presented six student projects. The students Colin O'Sullivan and Jane Clossick were particularly active in the preparation.

Addressing the previous issue of non attendance, our local contacts informed a number of interested community members. In addition, we pinned-up further posters, distributed over 3000 invitations/flyers and contacted a number of local media. The strategy was successful. With a total of 20-25 people, the number of attendees was significantly higher right from the beginning and people of all ages and social backgrounds attended the workshop.

There was no strict time-table to discuss the student projects. Community members had individual conversations with each student. This allowed people to engage immediately, as they joined the workshop. The less formal appearance was inclusive and led to active and intensive conversations. Nevertheless at appropriate times we gave formal introductions to groups of people, allowing each member of the community to have a certain level of information about what we do.

People's comments were more diverse, some critical and some very supportive. Nevertheless, all of them were quite interested and could understand the projects. Again, we were surprised how good local people could read themselves into all of the projects. The comments and feed-back expanded our previous experience.

The workshop in Beckton gave a deeper understanding of community workshops, as the larger number of people shifted the nature of conversations. For example, the questions of what happens if everybody becomes self-builder within a bottom-up approach, was more present. Community workshops are about the individual within a group of people, neighbours or strangers. This in itself resembles qualities of urban life and experience here allows for more conscious thinking and doing. Local people could see the opportunities and could identify themselves with projects, which ask them to be part of a city building process. There may be consultation fatigue, mainly because of the wrong questions.

As the workshop progressed, two major issues appeared. Firstly, the projects are technically viable and 'time as a builder' is a convincing argument, when financial resources are not available immediately, especially in current unstable economic times. Secondly, the planning remains the main question mark in most projects. Members of the local community showed very little confidence in a change in planning, which would allow more open and appropriate local decision making and design processes. Nevertheless, people could see a shift in planning in recent years.

Overall, people's diverse opinions allowed them and us to look at the projects from different angles. Some discussions would have been impossible within academia. This has partly to do with requirements, architecture has to fulfil on an academic level, but also with the lack of hands-on debate. There is intelligence in both academic environments and local communities. The workshop in Beckton has shown that both sides have to reach out, to potentially gain a lot.

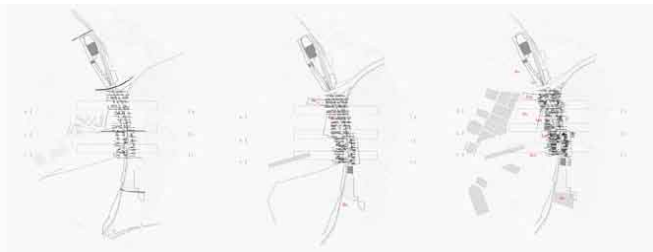


SIX STUDENT PROJECTS IN DETAIL

Charlotte Harris, MA Alternative Urbanisms Tutors, Signy Svalastoga and Christoph Hadrys 2012 Olympic Site, Boundary Development in Stratford

The project is concerned with the construction of the 2012 Olympics, wider material recycling in East London and urban developments afterwards. The main project idea is a series of walls, which would contain and separate material deposits, like top-soil, crushed concrete or gravel, during the Olympic construction period. In addition, these walls contain access services and mark plot pattern. As such, they would enable landscapes conditions as well as individual and small scale urban developments afterwards.

Located between existing urban territory and future Olympic site and park, the project uses conditions of restructuring for long-term city building processes. The infrastructural intervention of walls and plots, sets-up a flexible framework in a range of scales, from urban public space, to mixed use developments and their particular building components.



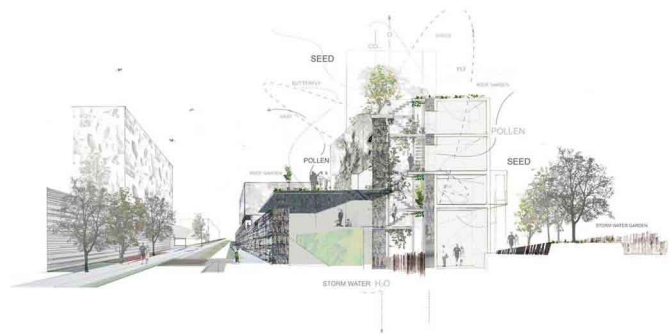


The project is one of the most demanding student projects as the components of time, process and scale are very complex. During selection we had slight concerns about the suitability of this project for community workshops.

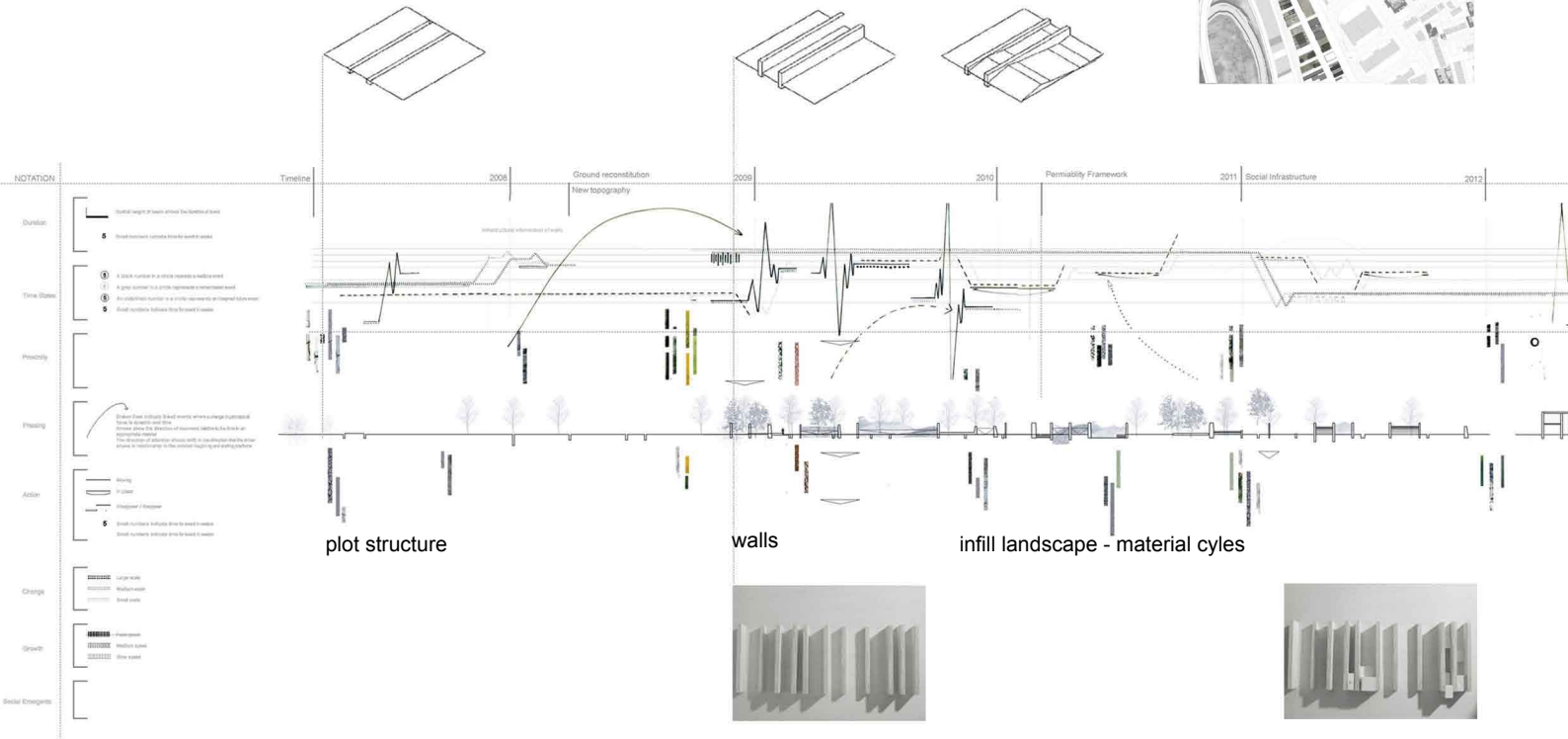
To our surprise, we were wrong. The event in Beckton showed that local people could very well understand the project. The context of the Thames Gateway confronts people with semi-industrial land and ongoing restructuring all the time. People understood that long term ongoing urban processes have certain permanence in their day to day appearance. It is just a logic step to make such processes part of functioning and enjoyable urban environments. This is especially relevant to the particular nature of many urban environments in East London.

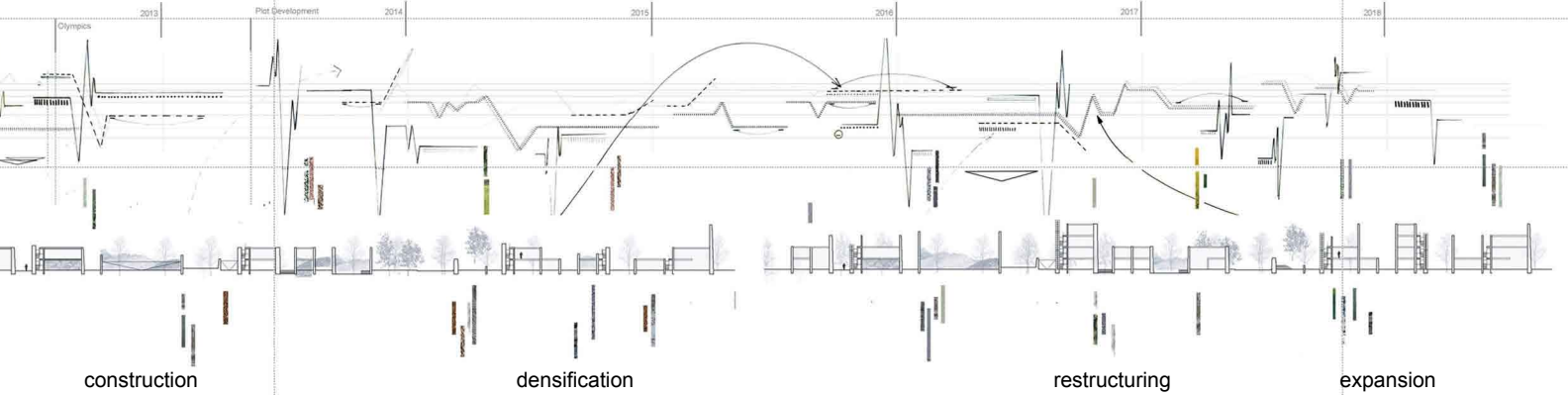
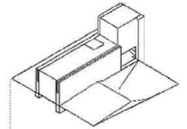
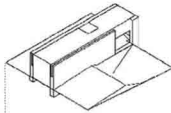
The project sparked comments of concern about the current developments in and around the Olympic site, as plans for the legacy shrink. The double use of infrastructure appears to be a feasible tool to integrate communities in the long term.

From left to right: Urban scale phasing, site plan - location in the Lea Valley, concept of walls and colonisation, model photo - enabled developments and landscapes, section-perspective.



Time is a key component of the proposal, as future processes are an initial part of the design. It is a network transformed along the diverse time-lines of human and natural habitat.





construction

densification

restructuring

expansion



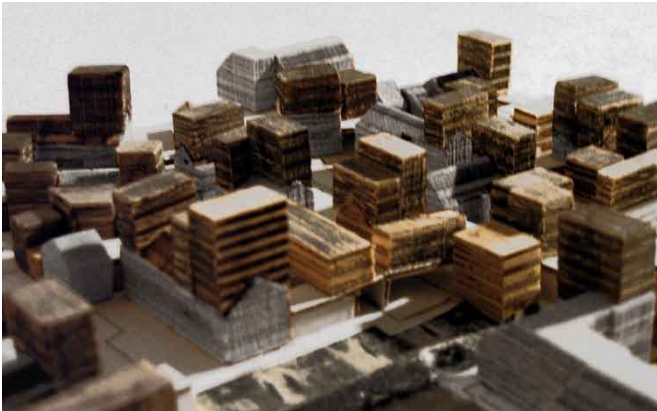
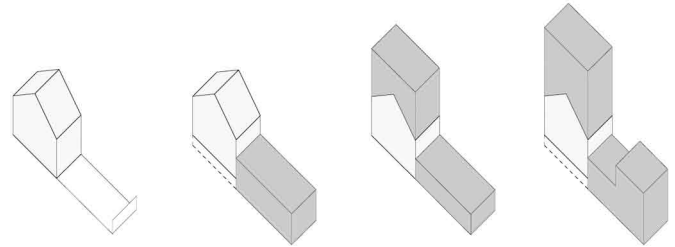
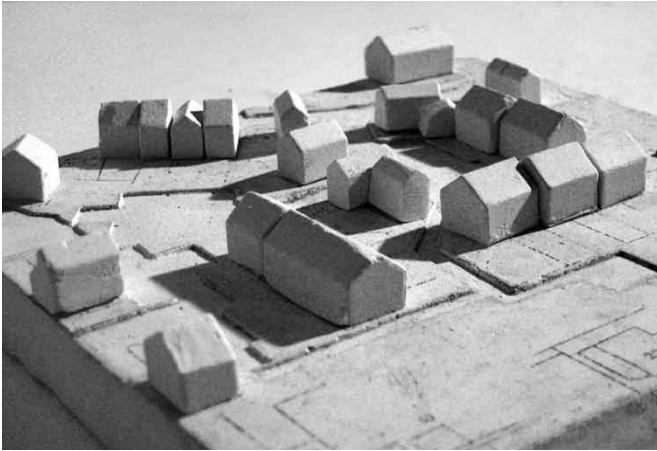
Colin O'Sullivan, Diploma Unit 2
Tutors Christoph Hadrys and Signy Svalastoga
Housing Framework, Savage Garden Beckton/London

The work is located in Beckton next to the University of East London. Beckton is part of suburban redevelopments in the London Docklands, car-dominant and typical for the 1980s.

The project addresses the redevelopment of public space and private house extensions. The redevelopment of public space aims at enhancing the usability, accessibility and legibility to create sociable spaces for the whole community. The private house extensions would allow people to shape their living environment according to individual needs. In the project, each owner of a relatively small house is enabled to increase space and also property value, actually by planning alone as well as by physical extensions.

Bottom: existing suburban cul-de-sac housing in Beckton
Right top: existing figure ground, indicating potential demolition
Right bottom: proposed new layout





During the first workshop in August, our partners suggested a series of further potential measures.

The overall scheme could maintain its long-term quality with the application of a pattern-book, describing a visual and material framework. The scheme would also require involvement of a third party to negotiate initial collaborative design, decision making processes, planning application and implementation. The public space management and individual 'retrofitting' open up questions of local community involvement and sense and sensibility of current local planning.

Left top: model photo existing

Left bottom: potential scenario - proposal

Top: enabled expansion - evolution



During the second day of the first workshop in August, members of the local community discussed the project in a diverse manner.

They recognised the work's relevance. It was mentioned a couple of times that the current local community appears largely disinterested in public and private spaces. The particular community is transient, possibly because nobody can invest and contribute to change. Both, public and private space considerations were regarded as important.

The public space strategy opened questions of how much and how little is appropriate. On one side, interventions pose a threat to current habits and may use public funding, that might be necessary somewhere else. On the other side, it would allow clearer and more legible spaces (no rubbish dumping in hidden public spaces) and it would integrate the community with the rest of Beckton.

The private house extensions sparked equally diverse views. On one side, such extensions would change the character of place and the 'leafy nature' of Beckton. In addition, there is a concern of wild and arbitrary architectural designs, destroying local visual quality. On the other side, houses are often too small to accommodate a family and its needs. In addition, more flexible planning regulations would allow bottom-up investment and value increase. Furthermore, the application of a pattern-book seemed to be a reasonable device to control architectural quality.

Overall the scheme was regarded as a flexible strategy, essential to 'inject new blood' into the community.





Cyan Post

Comments during the second community workshop in Beckton

The project was largely perceived as a good step to create sustainable communities, by restructuring public space and allowing people to expand their own homes. Nevertheless, the project strongly opened the question of how to plan, guide and control such expansions. The fear of arbitrariness and potentially ugly outcomes was expressed several times. The use of community workshops to set a common standard was well understood. Nevertheless, the use and application of a pattern-book, common and well used in many European countries, was more difficult to communicate to a wider audience.

Overall, members of the local community could relate very much to the scheme, as most people are confronted with insensible public space or have thought of a little house extension here or there.

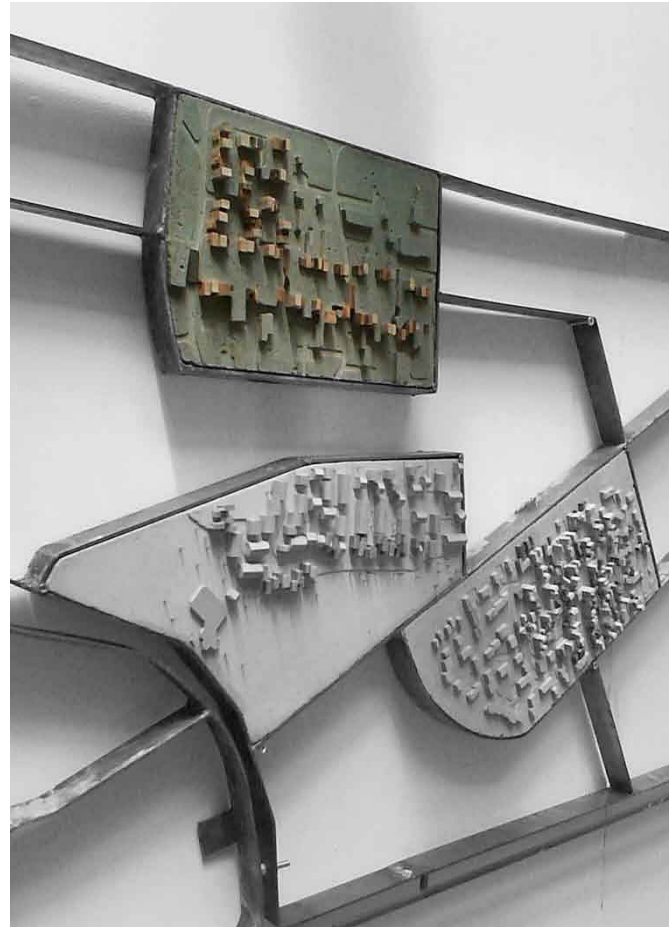


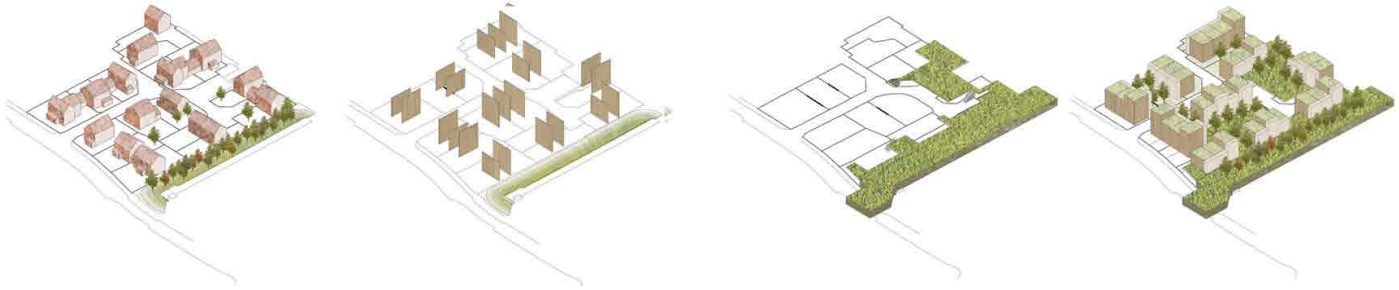
To the left: in the workshop, trying to understand existing urban plans
To the right: playing with the proposed urban strategy

Richard Stevenson, Diploma Unit 2
Tutors Christoph Hadrys and Signy Svalastoga
Housing, Mitchell Walk Beckton/ London

The scheme is located in Beckton and addresses local suburban neighbourhoods as well as a disused green walkway - called Mitchell Walk. The existing houses with their separate garages are on relatively large plots. The proposal doesn't question existing plots and ownership. It would enable individuals to extend or replace their existing homes with additional housing units, by enhancing relationships between public and private.

The first workshop in August opened questions of viability. In the beginning, people slightly rejected the idea of a project in their neighbourhood. On one side, some defended the current design. On the other hand, they admitted that quality of living as a community and as an individual was increasingly insufficient, possibly rooted in deeper structural reasons. The concern, to lose what they had and liked was bigger, than a potential gain. For example, to enhance security, some suggested that public spaces could be enhanced with CCTV instead of design, while admitting that the presence of cameras would be highly unpleasant, especially in residential areas.

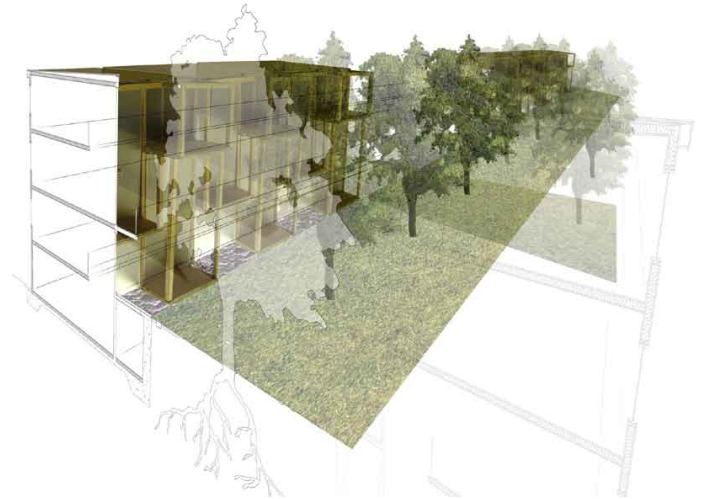




As the workshop progressed, people felt more and more familiar with the project ideas and started to actively use them for their own suggestions. They accepted that new and additional buildings would change nature and appearance of the area. New buildings would bring in more people and subsequently more natural surveillance and security. In addition, facilities, such as currently empty community centres, shops etc. would be more feasible. They even started to imagine their own house extensions and could see immediate benefit for themselves. This would bring opportunities to invest and would allow people to be part of urban developments, again.

Private construction would have to be negotiated to secure quality. Generally, the aesthetics of the existing was less of a problem, than its spatial functioning. The involvement of a third party to identify opportunities, to negotiate planning and even to allow for construction was regarded as very interesting.

Left page, left to right: existing disused walkway, urban design model. This page top: sequence of existing, existing party-walls, potential party-walls and maximum possible proposal. On the right: perspective - proposal.

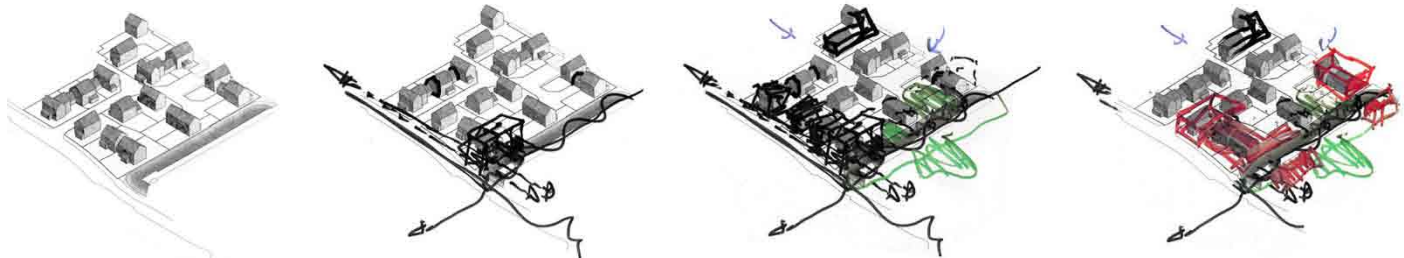




Members of the local community commented further during the workshop in Beckton.

As some members of the local community live on site, they had special interest in the scheme. Overall they supported the spatial mechanics of the design, saying that additional houses would allow more people in the neighbourhood to support amenities. This would make the area safer, as it becomes more urban and generate additional private income. Some members of the local community would like to see a small pilot project, being built. It would demonstrate the particular planning and design mechanisms. Furthermore, it could be a case study and a role model for further developments in the Thames Gateway.

From left to right: perspective - proposal, process of step-by-step and bottom-up implementation - outcome community workshop, community workshop in Beckton.

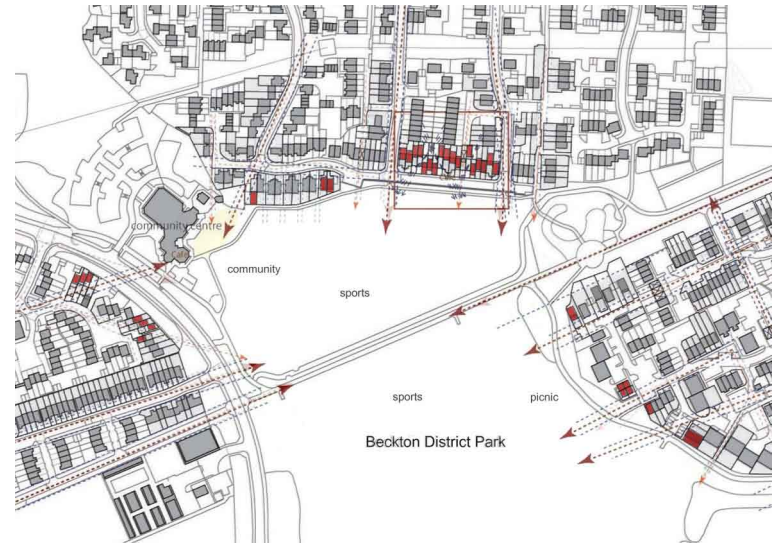
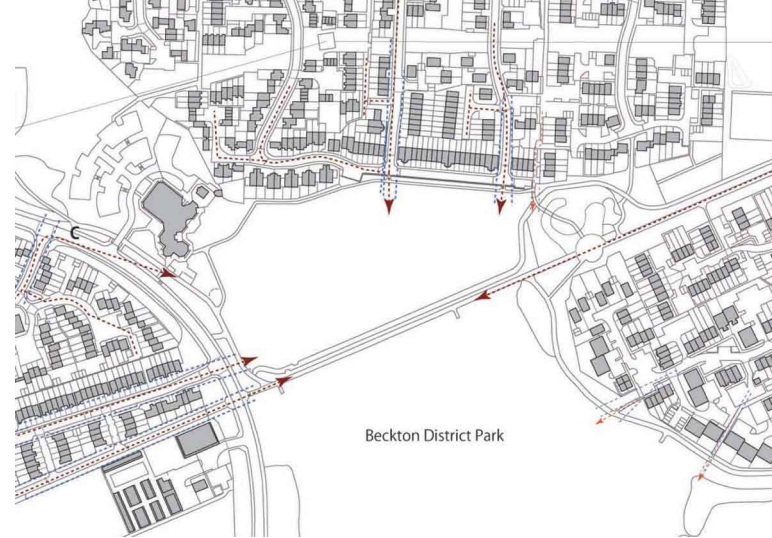


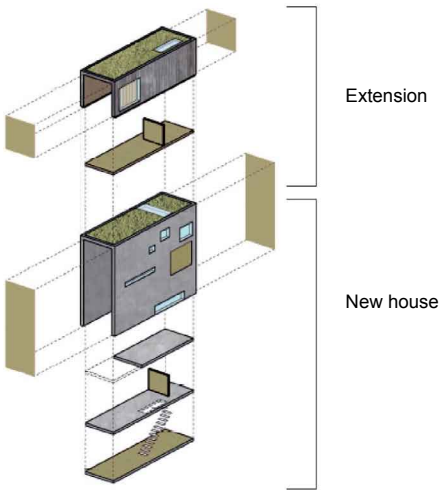


Masamori Magota, Masters in Architecture Unit 2
Tutors Christoph Hadrys and Signy Svalastoga
Neighbourmaker - People, Park and City, Beckton/London

The work is concerned with collective developments of individual houses on private plots along Beckton Park. The strategy aims at invigorating the relationship between park and adjacent urban developments, by opening links and creating an actively inhabited park-edge and neighbourhood. The project enables three-dimensional frameworks for public and private developments (limitations and freedom within them), negotiation of space and time-based possibilities for successive private implementations and extensions.

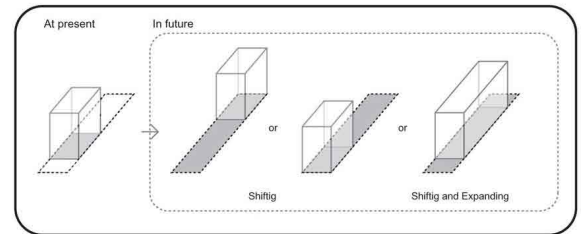
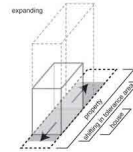
During the first workshop in August, the project was described as 'impossible to get through planning' on one side and with 'tremendous market potential' on the other side (Roger Zogolovich). The concerns led to a number of speculations about a required change in local planning to enable such developments and a possible third party involvement. Like in other projects, such a third party could be responsible for making necessary planning frameworks and could mediate between people and planning authorities.



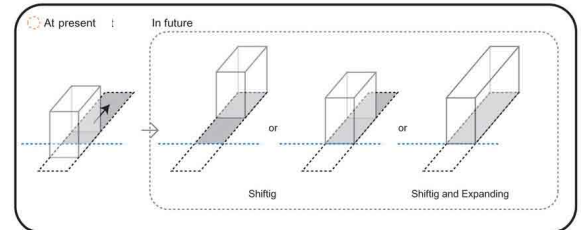
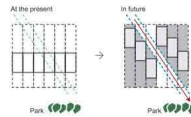


Left page: proposal model elevation, plan of existing and proposed development.
 Right page: section and area of tolerance, building components, rules for siting on individual plots/ extensions

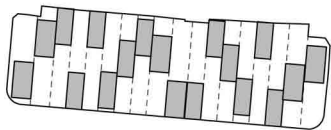
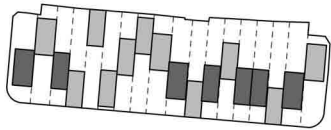
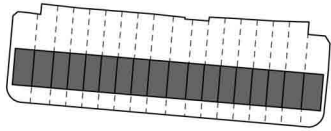
Tolerance on individual plots - possibility of shifting building location



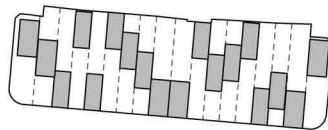
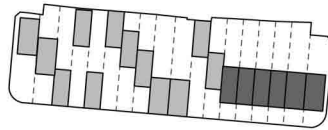
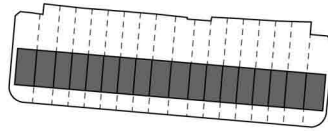
Limiting freedom, due to public interest/ neighbours - sightlines/ light



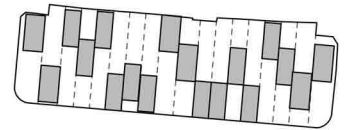
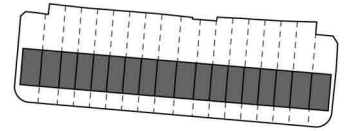
Individual implementation
house by house



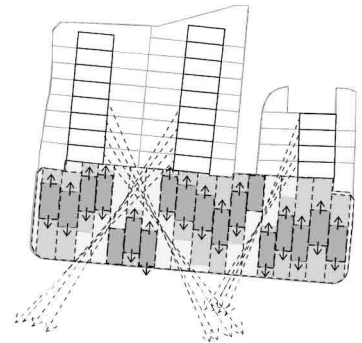
Collective implementation
three phases



Collective implementation
one phase - developer involvement

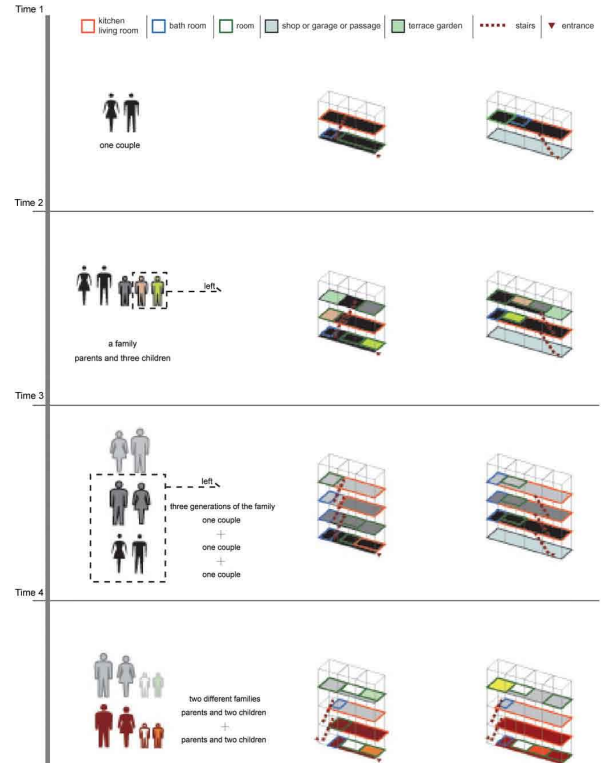
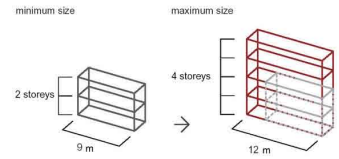


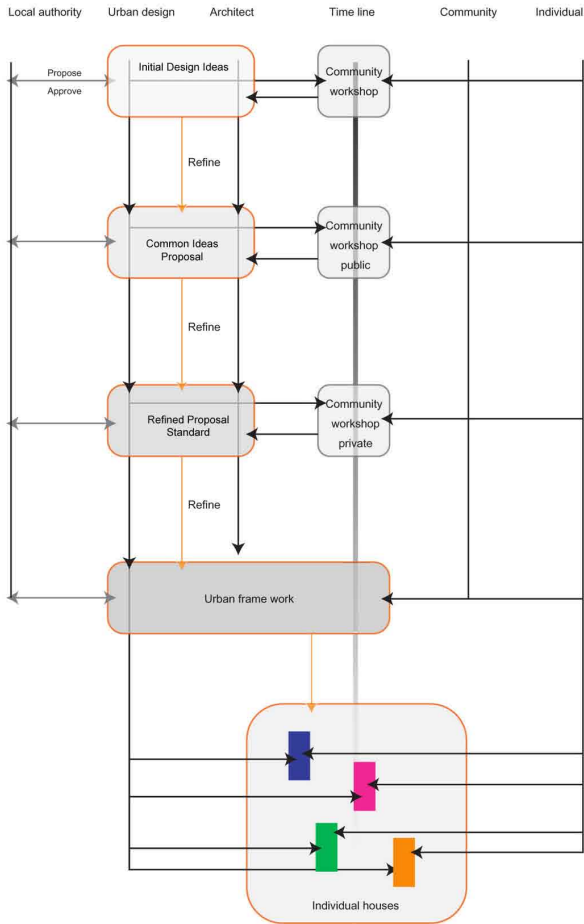
Framework for tolerance and limited
freedom - sightlines/ views to park





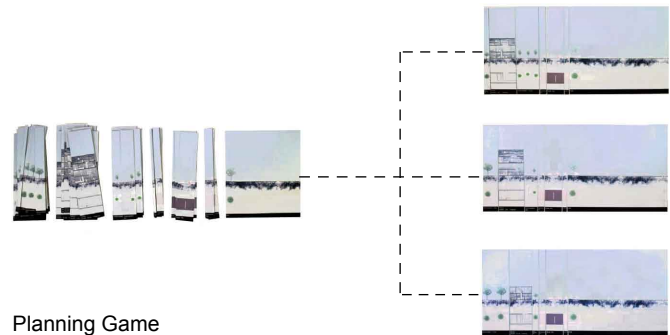
Time - line Generations



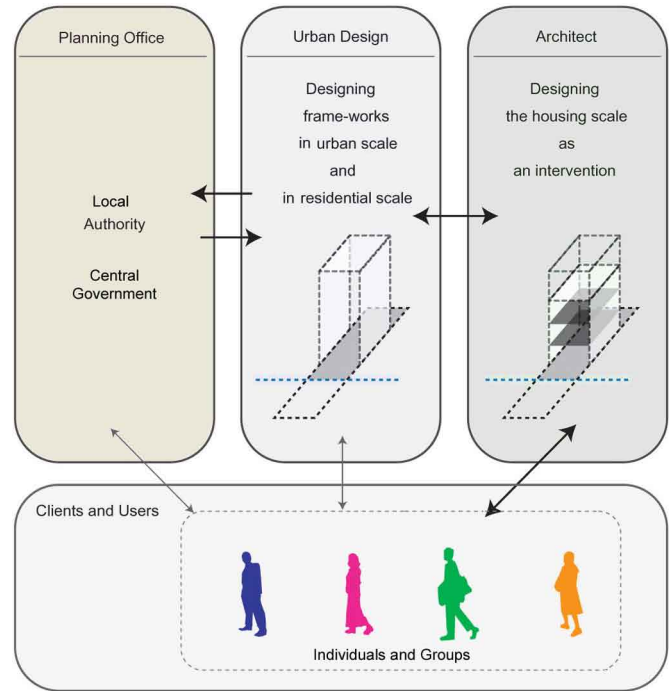


During the workshop in Beckton, members of the local community confirmed that the park is difficult to access and underused. As such it is dangerous, particularly during the night. Furthermore, the current local community centre is unfeasible, due to the lack of people, supporting it financially and socially. Neighbours of the site supported the proposed scheme and noted, that they could imagine living there themselves. Furthermore, the scheme would also invigorate their place, currently segregated from access to the park.

The project opened another question. As the student proposed a series of concrete buildings, serving as foundations to future expansions, some members of the local community noted that they do not like concrete, while others said it was all right. The discussion about taste, offered an insight into the difficulties, which a community workshop offers, in terms of personal preference. The private design of a building has always an influence on public appearance. How should communities decide on taste?



Planning Game



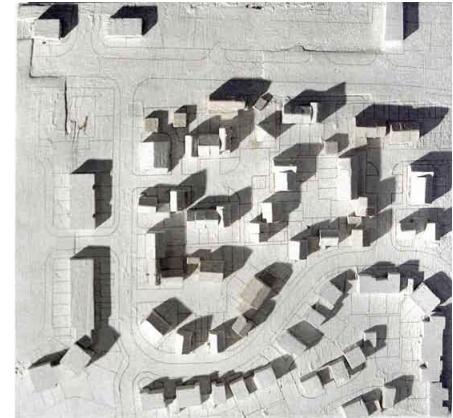
Left page to the left: community workshops as a process delivery mechanism for design, allowing refinement with community knowledge. Left page - bottom: planning game allowing visualisation of different spatial sections.

To the left: Eike Sindlinger and Dominic Church - planning game, during the first workshop in August, image by Charlotte Harris.

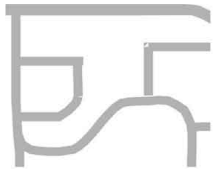
Top: Stakeholder relationship - third party (Urban Designers) involvement.

Yonghyn Ryu, Diploma Unit 2
Tutors, Christoph Hadrys and Signy Svalastoga
Community Structure, Canning Town Beckton Area/ London

The need for local resources and recycling, like electricity and water increases. This project allows neighbours to share water recycling infrastructure, which would be unfeasible for individual households. With this as a starting point, the project uses existing houses and extends them upwards, with light-weight modular structures. As the main design element, screens or so called 'Community Structures' embrace existing and new. The screens act as water recycling, planting container and facades, offering different degrees of permeability. The scheme would also allow for denser developments, by maintaining qualities of privacy and open space. The collaborative process of implementation and ownership aims at sustainable communities.



Existing access



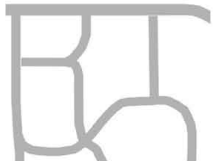
Urban blocks



Existing green



Proposed access



Combined new



Green new





The project is located in a flood plain, which has seen abundance and shortage of water, in the past. On one side, the screens would time-delay water discharge, which might contribute to prevention of fluvial flood. In addition, the screens collect water from each green roof as water is filtered on top of each modular housing unit. Using gravity, water naturally flows along the structure. The water is then used as greywater for plantations, toilets and other installations.

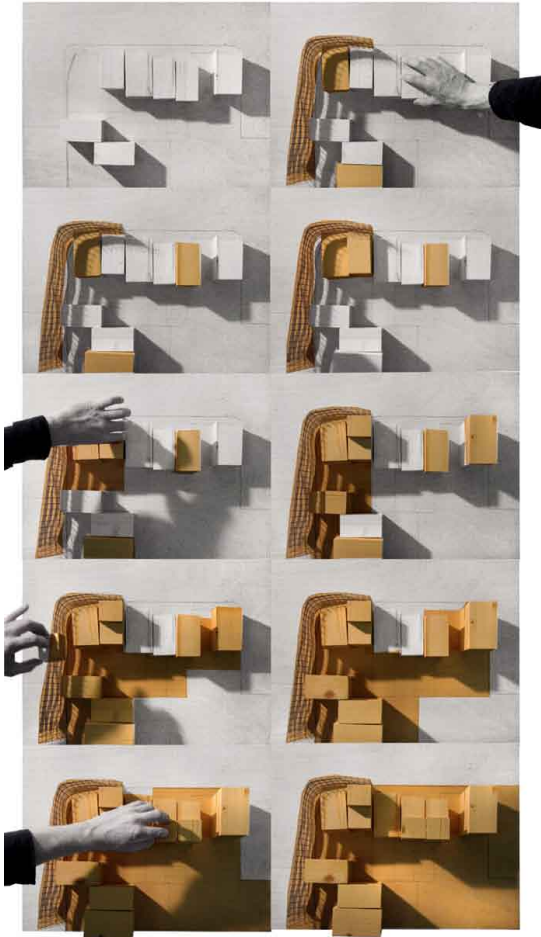
The screens also work as louvers, which are installed on different facades with varying levels and distances to create a variety of angled sunlight, allowing natural light for interior spaces.

In addition, each structure allows natural surveillance of streets and retains privacy within buildings and courtyards or difficult rest-spaces between streets and buildings.

Left page, comparison of existing on the top and proposed on the bottom - diagrams and 1:500 models.

This page: proposal perspective and section model, showing light-weight structure on existing housing, as well as screen for water management, plantations and facade.





There are different ways of developing the project. First, the local council would create an outline plan and house owners follow up with their own projects. In this case the land negotiation will have to be carried out within urban blocks. Eventually each urban block turns into one entity. Second, the house owners and local council set up an organisation and each plot will have shares according to their land or house size.

During the workshop in Beckton, comments were diverse.

As water management is increasingly difficult and service charges increase, members of the local community could understand the project and were largely supportive. Nevertheless, the economic pressure seems not to be high enough for a financial necessity of such a scheme, in the moment. As the current local community is transient, such investments are highly unlikely. Nevertheless, it was appreciated that such a scheme would invite long-term investment for many reasons. Subsequently, the project might contribute to create a more stable community in return.

The spatial appearance was convincing to different degrees. On one side the scheme could bring neighbours together, as they would have to collaborate on design, construction and management. This in itself creates a sense and need of community. On the other side, the design touches on individual rights and appearance of architecture.

Overall, people talked favourably about the scheme and discussed urban and architectural issues as a technical and social network, expanding discussions beyond an immediate house of interest or personal back yard.



Irene Benjumea, Diploma Unit 9
Tutors Robert Thum, Jeff Turko, Stephanie Schulze-Westrum
Wall to Wall Mat Building, North Greenwich/London

The project's agenda is the design for a low rise, high density and mixed use housing prototype. The scenario for this is a former industrial site on the Greenwich Peninsula, providing the project with a 'tabula rasa' condition next to the Thames. The 1 ha project scrutinises and tests the typology of the mat-building and the principles of conglomerate ordering, two ideas theorised by the architects Alison + Peter Smithson in the 1970's.

The work is concerned with common public space, such as walkways, and enabling walls. The walls are key guiding design components and constitute open frameworks for flexible private spaces and build form in East – West direction. To the North of a private space, one 'wall' is solid and contains rooms, like bathroom and kitchen units, as well as technical infrastructure. To the South of a private space, the other wall is a translucent screen to secure privacy. It would contain solar devices and planting. The low angle winter sun is allowed deep into the development and private spaces.



to the urban scale

The proposal is hoping to promote the production of new forms of urban life, challenging conventions of private and public urban space and questioning the relation between ground and building.

The scheme is developed as a system capable to grow between URBAN SCALE and BUILDING SCALE creating a programmatic fabric.

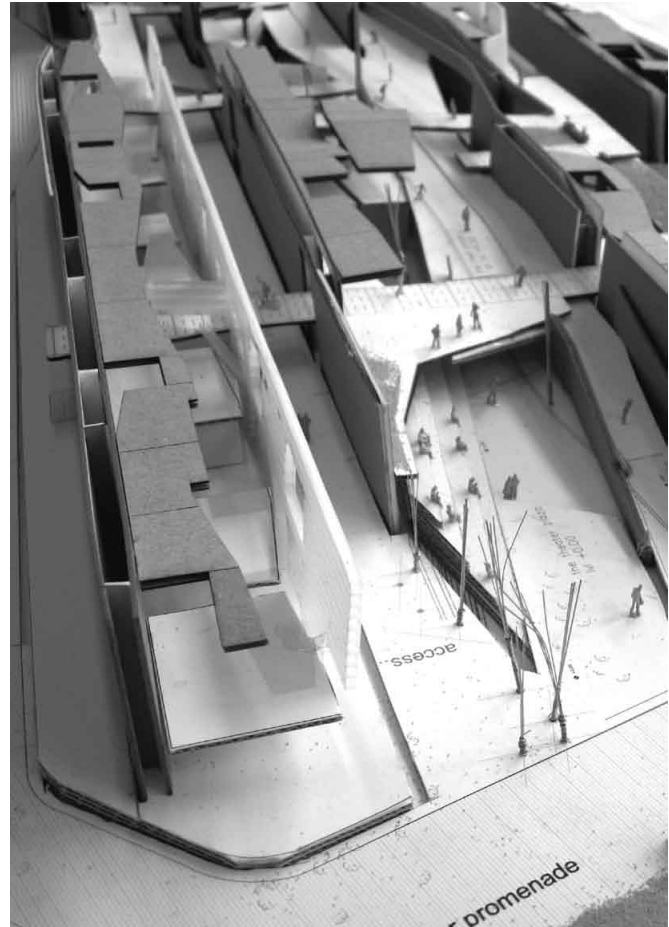
What will start as a housing project will be allowed to progress into a matrix of urban functions.

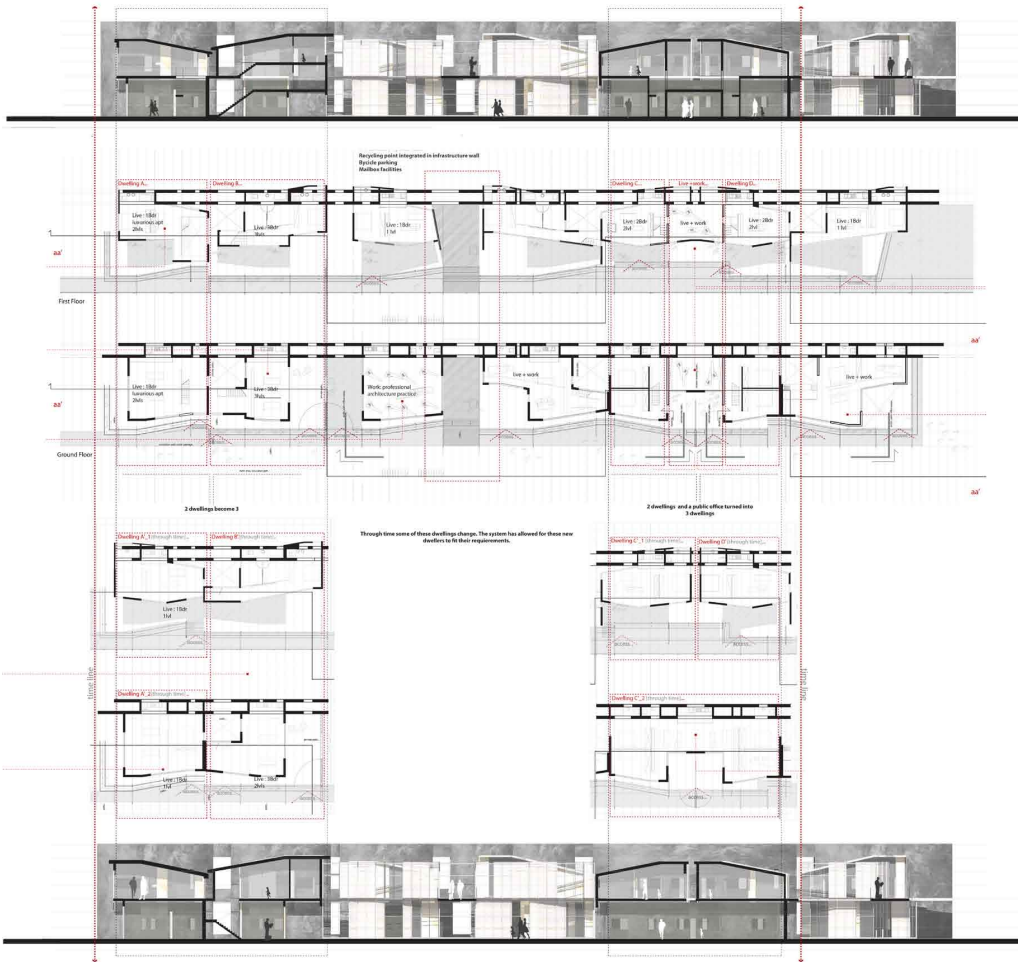


The different housing configurations are placed between the walls, in response to dweller's needs. The units follow a courtyard configuration. As building components for housing units are standardised, modular and flexible, the scheme is developed as a system capable of adaptation, growing and shrinking over time.

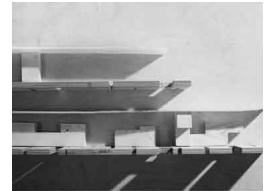
With a guiding framework and flexible modules, the project is both, top-down and bottom-up, creating a permanent, as well as temporary fabric.

Left page: photo existing site, map showing the project as a pattern in relation to Thames and the O₂
 On the top: section perspective - from left to right - service wall, units, translucent wall, walkway, service wall.
 Image to the right: project model.

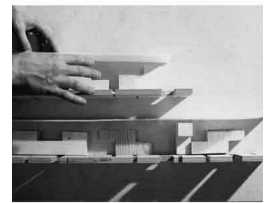




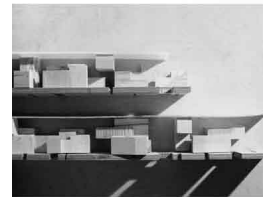
time 1



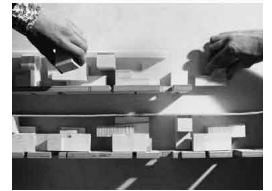
time 2



time 3



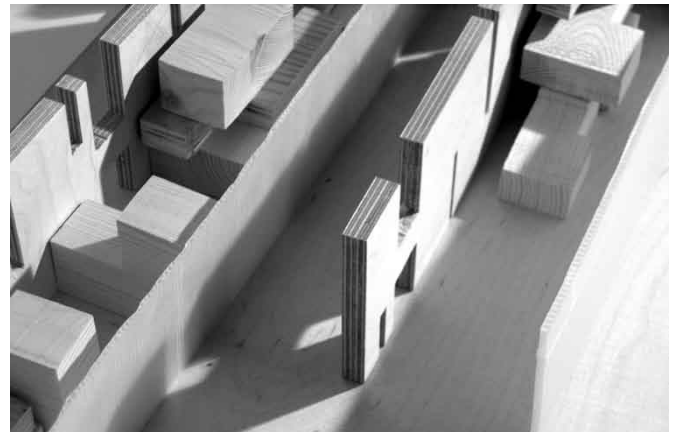
time 4





The main private space in-between the walls could be designed with flexible and adaptable building components or as suggested, just left as a space with a certain amount of freedom.

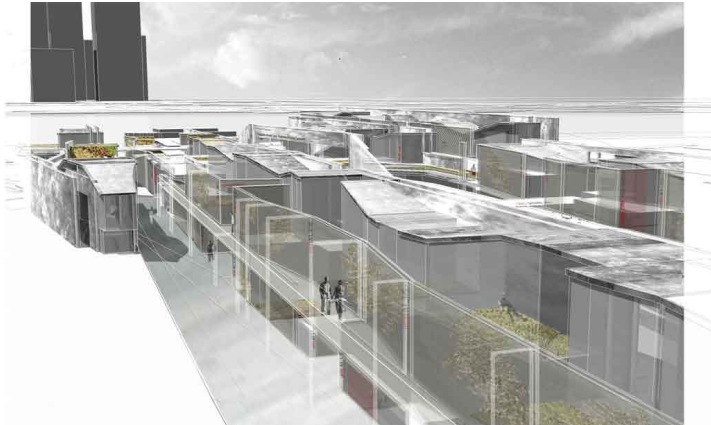
Roger Zogolovich stated during the first event: 'the suburban condition is a condition of freedom'. In addition 'the rules and spatial devices are the very means that allow freedom to happen within sustainable use of space' (Christoph Hadrys). The overall development would be a developer driven scheme, yet allowing flexibility according to individual needs. For developers, the adaptability would reduce initial development risk/costs and would secure long-term usability and demand. Again, the question of temporariness is critical with regards to local planning. We tested temporary modes of spatial configurations with the timber models.



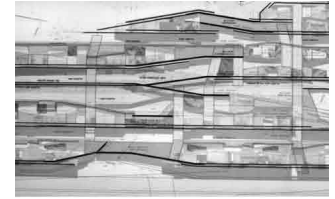


At the workshop in Beckton, there were no members of the local community from Greenwich. Nevertheless, the project was discussed in a vivid manner. On one side people could see the need for such a larger development, because it allows a visual sense of community and efficient use of mass production. In addition, the prefabrication and determined appearance gives people guidance and strong support in design questions. On the other side, the initial costs to build the scheme might exclude certain people. Overall, people valued the scheme for its distinct different appearance, adding to the diversity of discussions.

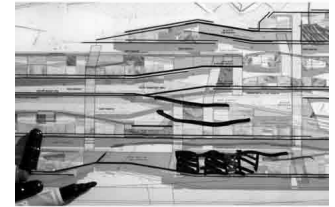
Left page: scheme exploded axonometric, showing building components.
This page below: perspective proposal. To the right: interpretation and explanation - drawing on the proposal plan, during the workshop.



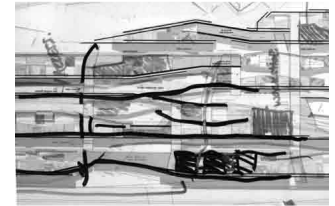
proposal plan



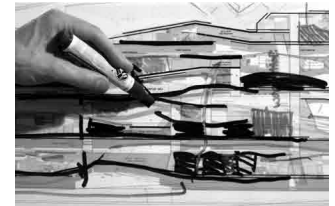
walls/ units



connectivity



expansions/ change



INFORMATION EVENTS

Event at the Building Centre, London, 30.10.2008

The event at the Building Centre offered the opportunity to show the CD-G Workshop results to a wider, yet also expert community in Central London. Around 15-20 people attended the lecture. The audience was mainly composed of academics from local Universities, as well as interested urban designers. The questions were about the sense and sensibility of the CD-G Workshop. The feed-back was supportive of our approach. Most experts from the field could see why the project has two critical sides, the workshops themselves and local planning. Especially the current planning regime seems to pose unreasonable hurdles for developments all around London and the UK.



Event at the AVA, University of East London, 04-07.11.2008

The exhibition and presentation at UEL, School of Architecture and the Visual Arts, offered the opportunity to show the CD-G Workshop results to an academic environment. In addition to the CD-G Workshop, Christian Derix and Michael Kohn presented the UrbanBuzz funded projects SSSP (Smart Solutions for Spatial Planning) and ESP-SIM (Enabled Self Procurement – Simulation). The audience was mainly composed of students and teachers, as well as some members of the local communities. A lecture introduced what the CD-G Workshop intended to do and what we achieved. We described the process of community participation with exhibited student work. Roger Zogolovich stressed the importance of such an approach in architecture and academia.

The exhibition continued for a couple of days, allowing students and guests to look at the workshop results.

"I have several properties in Beckton and Custom House, which I would be very happy to extend and improve, creating more functional space and increasing living areas. I have been involved for several months now with the CD-G Workshop and find the work they are proposing will not only benefit myself but many residents and tenants in Beckton. It would make life so much easier to work from their guidelines once they have been tried and tested and I would be very happy to get involved in any test cases they intend to implement."

Local Resident from Beckton, Pat Dunphey, 24.11.2008



PARTNERS' COMMENTS

Roger Zogolovich, AZ Urban Studio

The events, the workshops and the initiative that have taken place in the AVA at the University of East London have struck a deep chord within me in my interpretation of their approach. I believe that it questions the status quo for our housing policies and poses a new and interesting experiment for housing.

It builds on the opportunity for self help and self build. It is within the best pioneering traditions. This tradition of self help is bottom up and therefore has attraction in to-day's difficult market conditions.

The six student projects presented by the university and the designers were discussed with both the expert panel and the local community. They all represent the notion of the addition, around a set of rules that allowed them to be expressed, vertically, horizontally or exponentially. I found it an invigorating model of housing and one that could help transform the somewhat banal housing context of existing housing estates.

The current state of the housing model is dull, despite all the entreaties of many design policies and reviews. The tried and tested housing estate models seem to me to deny our reasonable expectation for something better.

The students proposals that we saw, offered an invitation to the occupiers – that invitation asked them 'how they would like to live'. In this idea it both permitted and encouraged all manners of expression of individual lives. This approach recognises the

importance of the home in the lives of the families that dwell within. To move this concept forward the regulatory framework would need to permit extensions to be made in every direction. This change would allow the home to grow or shrink with the changing life of its inhabitants.

I believe that this approach has a wider role to play and should be encouraged and discussed. The ability for the home to provide, home office, painting studio, accommodating elderly parents, pets, or any other independent activity that enlarges the scope and the interest of the occupiers must make sense to the wider ambition within our society for families to adjust alongside their circumstances and to deal responsibly with their lives.

The variety and the beauty of accident that would occur with such individual activity does in my opinion add rather than detract from the banality of the environment of the somewhat reductive suburban housing estate. The AVA students demonstrated in their architectural language both a richness of form and a freedom that I found stimulating and exciting. I believe that London is lucky with its cultural diversity. If we took the opportunity of empowering this community to create homes in whatever style and form they felt appropriate. I believe they would embellish their lives, homes and gardens in what might become a rich experiment in variety of form, texture, light and shape.

Current planning legislation tends to forbid or limit freedom of action for the individual. This restriction has strangely not bought with it the benefit that was imagined. We do not seem to have a richer or more beautiful environment because of it.

I am concerned that this tight policymaking excludes innovation and has had rather led to a lowest common denominator, sadly with little character or distinction.

The Thames Gateway is searching for its future, it seems entirely appropriate a location to encourage and debate this experiment. UrbanBuzz has provided the opportunity for this idea to be launched. I hope that it will be followed and developed further; it is in my opinion an important line of enquiry offering huge potential in the current difficult market housing conditions.

London, 01.12.2008



Eike Sindlinger, ARUP Urban Design

Based on the observation that existing communities often seem to have little influence on how their neighbourhood changes, the workshop identified the Thames Gateway as an opportunity to develop a collaborative design tool that would empower local residents to have a more prominent voice in the debate about their immediate surroundings.

Student projects were selected as the starting point for a two day workshop with the aim to develop such a tool. All was ready - except the public didn't turn up at the proposed date and time. Besides demonstrating one of the fundamentals of public engagement (you have to meet people where they are, both in terms of location and communication) the students' work touched on another important issue:

The selected projects offered not only fresh ideas for the existing neighbourhood. Unwittingly, most of the proposals challenged the current planning system by offering convincing concepts that would be impossible to realise under current rules. A tool based on these projects would most certainly have led to suggestions that could not be taken further without significant changes to the planning law.

So maybe, instead of aiming to change the system, the tool could be designed to produce implementable outcomes by enabling a playful negotiation of priorities within the limitations of the system. And it would need to do this by means that are tangible and understandable for the public. Such tool could achieve two things: For one, the community can explore ideas and come up with proposals that can be taken on board in

the design development. But also, through playing with the flexible parameters, the community could understand the relationship between decisions and proposals. This would allow workshop participants to engage in future discussions in a more informed way and help them to judge proposals put before them.

For this to work, it is important that constraints and limitations of a given context are well defined and understood by all participants at the beginning and reflected in the mechanisms of the tool itself. The simple timber models representing the student concepts were perhaps a first step in that direction. They deserve further development with a view towards incorporating the constraints so they can encourage innovative interpretations of those.

London, 25.11.2008



Dominic Church, CABE (Talk for the final Event at AVA)

My work at CABE is all about making strong clients. Our objective is to help clients make well-informed choices and achieve the best results for the public good. Successful regeneration projects are always led by strong community engagement, rather than by a well-meaning government hand. At the end of the day, the clients are the people who will live there for years to come.

Part of my remit at CABE is a tool called Building for Life. It's a catalogue of 20 criteria, which we can use to structure the debate about the quality of new residential neighbourhoods. The criteria are very simple, but the important thing for us is that they provide a way for us to show that good architecture and urban design are not just a matter of taste.

This is crucial because as soon as you accept that design quality is just a matter of opinion, your contribution to the discussion is at risk. Your knowledge and expertise becomes a mere opinion that is an unnecessary and irrelevant expense. If you allow yourself to be cut out of the action in this way, you do yourself out of a job, but you also deprive the wider community of the benefits of your expertise.

For you to remain relevant as an architect or urban designer, you need to offer your clients tools and techniques to understand the issues, challenges and opportunities, the possible solutions and to make an informed decision.

For your creative efforts to succeed, you need clients who are knowledgeable, and with whom you can engage in a

meaningful way to develop the best design response. You need clients who are confident and with whom you can develop a shared vision which is ambitious, but tempered by realism and powerful enough to withstand being challenged.

It would be completely wrong to expect your clients to bring all of this to the table from the outset. In fact, it is part of your job to ensure that your clients can make an informed choice and provide you with a clear brief. This is where the knowledge transfer comes in.

The transfer of knowledge has to flow both ways. But in order for this to work, you need to find a shared language to describe, communicate and discuss some very complex multi-dimensional concepts. You need tools and concepts to structure that discussion – this is what your creative design skills are for.

You need to make use of these to look and listen and to identify and describe what you find. You need to apply your insight and analysis to what you find, identify issues, constraints and opportunities. And then you need to find a way to share your understanding and analysis, communicate complex issues in simple terms. You need to inspire by using creativity and insight to find ways forward, and apply your knowledge as a lever for change.

At CABE, we run hundreds of workshop events every year. We have found hands-on workshops one of the best ways to engage with just about any group of people, whether they are residents from the local community, planners, politicians or design professionals. Good materials – drawings, models and



visual resources are essential for a successful workshop. We use all three of these.

Having seen the work you produced for this project, I have been very impressed by the work you have put into drawings and models that really serve to identify and analyse the challenges presented by the poor architecture and incoherent urban design of the areas you studied. In fact, I have seen some great tools for engagement I would love to steal for CABE to use. That's another form of knowledge transfer for you!

I would like to congratulate you all on producing some excellent work. There is no doubt in your mind that you will be able to benefit from drawing on this experience for your work in the future.

London, 04.11.2008

OUTLOOK

The CD-G Workshop started a number of possible further academic and non-academic initiatives.

As a school, we will further our investigation in collaborative design. As the required design work is quite special, yet open in expression and process, a number of Diploma Units and Masters will continue to explore enabling architecture locally and internationally.

The student Colin O'Sullivan continues his work as a master student in the MA Alternative Urbanisms, exploring space, design, organisational structures, community participation and pattern books. The work will be used to further engage members of the local community.

The non-academic initiatives will embrace our partners, local communities and planning. Especially, Roger Zogolovich has shown great interest to further the collaboration, to set-up a more permanent basis of work and working. This is particularly important, as the school lacks development expertise. While community participation is likely to increase, the market for more long-term sustainable projects opens many questions and demands unusual answers.

Based on our contacts to local communities, we will further collaborate with diverse members of the local community. Particularly some members are interested in a potential pilot project illustrating alternative methods of planning, designing and building, as an enabled bottom-up approach.

We will use the work to address local planning. As local authorities review their planning with introduction of Local Development Frameworks, we will expand on this and will advertise our explorations, made during and after the CD-G Workshop.

We will exhibit the project at CABE and establish the blog www.cd-g-blogspot.com, as a key means to communicate the way of working.

Encouraged by the CD-G Workshop outcome, we will continue to expand the collaborative methodology, explored in this UrbanBuzz project. The workshop has shown that building sustainable communities involves diverse people combining vision, expertise and desire in an open process.

I would like to thank everybody who contributed to this project with great enthusiasm and energy.

Christoph Hadrys, 15.12.2008



BIBLIOGRAPHY

¹ Anne Power and John Houghton, *Jigsaw Cities, Big places, small spaces* (Bristol: Policy Press, 2007) p 124.

² Department for Communities and Local Government, "Planning for a Sustainable Future - Consultation" (www.communities.gov.uk, accessed 02.11.2008).

³ Commission for Architecture and the Built Environment, "Design Task Group" (www.cabe.org.uk, accessed 02.11.2008).

⁴ Biennale di Venezia, 10. Mostra Internazionale di Architettura, *Cities Architecture and Society* (Venice: Marsilio, in Europe Oxford: Windsor Books, 2006) p 3.

⁵ Urban Task Force Report, *Towards an Urban Renaissance* (London: Department of Environment Transport and Regions, 1999) p 44.

IMAGES

Page 1 (cove page), CD-G Workshop in the Thames Gateway, illustration by Christoph Hadrys.

Page 4, workshop model photo, Colin O'Sullivan.

Page 23, workshop in the Beckton Community Centre and Church, image by Jane Clossick.

Page 41, workshop AVA, 20.08.2008, image Christoph Hadrys.

Page 42, Planning Game inspired by work of Verena Kyrein and Miriam Koudmani.

Page 47, workshop in Beckton, image by Jane Clossick.

Page 51, workshop AVA, 20.08.2008, image Charlotte Harris.

Page 54, exhibition and presentation at the Building Centre in London, 30.10.2008, image by Agnesa Sanvito.

Page 55, event at the AVA, 4.11.2008, image Rob Houmoller.

Page 56-59, images by Charlotte Harris.

Page 61, workshop model photo, Christoph Hadrys.

Publication December 2008

www.cd-g-workshop.blogspot.com

© University of East London (UEL)
School of Architecture and the Visual Arts (AVA)
4-6 University Way
London E16 2RD
UK

UEL
University of
East London

AVA
www.uel.ac.uk/ava

