


ARCHAEOLOGY

The immense importance of the past in the present is emphasised by contemporary debates about heritage and identity. The exceptionally vibrant atmosphere and a vast range of unrivalled resources that UCL Archaeology has to offer make it the perfect place to study this exciting and topical subject.



| Degree programmes | |
|---|---|
| F400 | Archaeology BA 3 years |
| F402 | Archaeology BSc 3 years |
| F401 | Archaeology with a Year Abroad BA 4 years |
| FL46 | Archaeology and Anthropology BA 3 years |
| F424 | Egyptian Archaeology BA 3 years |
| VQ48 | Classical Archaeology and Classical Civilisation BA 3 years |
| Entry requirements <i>(See also page 164)</i> | |
| A levels: F400, F402, F401, F424, VQ48: ABB; FL46: AAB. A pass in a further subject at AS level or equivalent is required for all programmes | |
| IB Diploma: F400, F402, F401, F424, VQ48: 34 points with a score of 16 points in three higher level subjects; FL46: 36 points with a score of 17 points in three higher level subjects | |
| Other qualifications: see website above | |
| Number of places | |
| 60 in total | |
| RAE <i>(What is the RAE? See page 6)</i> | |
| 60% rated 4* or 3* ('world-leading' or 'internationally excellent') | |
| Admissions tutor and contact details | |
| Ms Charlotte Frearson (Admissions Administrator) EMAIL ioa-ugadmissions@ucl.ac.uk TEL +44 (0)20 7679 1494 | |
|  | Booklet available See page 171 for details |

What do we offer?

The UCL Institute of Archaeology is a lively and exciting place in which to study. It hosts numerous lectures by visiting archaeologists, is home to one of the best archaeology libraries in the world, has its own teaching collections (including the Petrie Museum of Egyptology), and has strong links with all the national museums and collections in London. It also has a strong sense of community, facilitated by a supportive system of tutors and the student society.

The institute's staff lead research projects in many parts of the world, and you will have the opportunity to participate in these, and other projects, thanks to UCL's fieldwork grants, which support travel and maintenance.

Your degree

Our programmes are designed to provide you with a general training in archaeology, covering both theoretical and practical approaches, while also giving you the opportunity to follow your interests in terms of periods, geographical areas or special fields of study. For both the **Archaeology BA** and **BSc** you will take the same core courses in your first and second year. The routes then differ in the focus of optional courses as you choose courses with a greater (BSc) or lesser (BA) concentration on the scientific analysis of findings.

You can also take the opportunity to study overseas, with our **Archaeology with a Year Abroad BA**, or to combine two disciplines which are closely linked at UCL in our **Archaeology and Anthropology BA**.

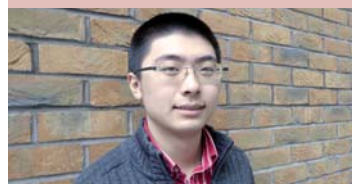
If you already have an established interest in Egypt or the Classical World, you may

THE STUDENT VIEW

Yecheng Cao

Archaeology BSc
Second year

“UCL is definitely a wonderful place to receive higher education. One of the main reasons I chose UCL is because the Institute of Archaeology is not only one of the most famous institutes in the field, but also it provides the most diverse courses. The excellent location of UCL creates a unique opportunity for archaeology students since the British Museum, the British Library and other academic bodies are all within walking distance.”



prefer to study one of our specialist degrees. These combine a broad grounding in archaeological method and theory alongside courses that focus on the languages, art and archaeology of these areas.

At the end of all our programmes, you will have acquired a broad knowledge of past human societies and their development, and the varied methods of archaeological data recovery, analysis and interpretation. You will also possess invaluable transferable skills such as working as part of a team, analysing and interpreting complex data, organising your time and resources, and structuring and communicating your ideas verbally and in writing.



Your learning

You will be taught using a mixture of lectures, seminars and practical sessions, either field or laboratory-based. Full use is made of our extensive teaching and reference collections and close connections to the national museums and collections of London.

Coursework, typically 1,500 to 2,500-word essays, is used to assess most courses. Most compulsory courses and some optional courses involve an examination element too. The completion of seventy days' fieldwork is a requirement for all students in archaeology. This includes a six-week study tour for Classical Archaeology students.

Your application

We use predicted grades, references, previous academic records and the personal statement on your application to make our assessment of your suitability for our degrees. You should demonstrate your interest in studying archaeology and explain the measures you have taken to sustain your interest in the past. Evidence of interests and activities beyond the school curriculum also helps define your suitability for our degrees.

Degree structure

Archaeology BA/BSc and Archaeology with a Year Abroad BA

YEAR ONE

- Interdisciplinary Approaches to Archaeological Problems
- Introduction to Field Methods and Techniques
- Past Societies
- Introduction to Social Anthropology
- A further course from a list of options

YEAR TWO

- Research and Presentation Skills in Archaeology
- Interpreting Archaeological Data
- Public Archaeology
- Current Issues in Archaeological Theory
- Further courses from a selection of options

YEAR THREE (F401 only)

- Year abroad at an approved university

FINAL YEAR

- Dissertation
- Fieldwork Portfolio
- Further courses from a selection of over 30 options

Unless living overseas, all applicants under consideration are invited to attend a short, informal interview at a departmental open day. The interview is used to assess your motivation to study the programme and your ability to formulate opinions on relevant topics.

Additionally, the open day allows you to meet tutors and current students, tour UCL and the institute, and find out more about the degree programmes, resources and facilities we offer.

A telephone interview will be arranged for candidates resident overseas.

Your career

The extensive fieldwork component of the programmes gives our graduates a real advantage in seeking a career in archaeology. This is evident by the numbers of graduates who gain employment with archaeological field

Degree structure

Egyptian Archaeology BA

YEAR ONE

- As for Archaeology, with the exception of Past Societies, plus:
- Texts in Archaeology
- Introduction to Egyptian Archaeology
- Ancient Egyptian Writing and Inscriptions

YEAR TWO

- Archaeology of Ancient Egypt
- Research and Presentation Skills in Archaeology
- Two from:
 - Interpreting Archaeological Data
 - Public Archaeology
 - Current Issues in Archaeological Theory
- Further courses from a list of options

FINAL YEAR

- Dissertation
- Fieldwork Portfolio
- Three Egyptian options
- Further courses from a selection of over 30 options

The structures of our combined Archaeology programmes can be found on the website or in our booklet

units or pursue a further qualification in a specialised aspect of the discipline. For others, an archaeology degree offers a strong foundation for careers in law, business, the civil service, accountancy, teaching, film and a wide range of other fields.

The following examples are drawn from data collected on behalf of the Higher Education Statistics Agency for the 2006-2008 graduating cohorts as part of a survey of first career destinations of UK/EU graduates six months only after graduation.

- Assistant Archaeologist, Archaeology South East (2008)
- Tax Associate, Deloitte (2007)
- Field Archaeologist, Museum of London (2006)