

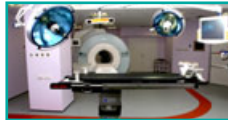


# The National Hospital for Neurology and Neurosurgery

NEXT >

All our telephone numbers have changed  
please do **not** use the numbers in this  
booklet instead:

For outpatients please dial: 020 3448 4777  
For inpatients please dial: 020 3448 4774  
The switchboard remains: 0845 155 5000



# Contents



This is an interactive document, all blue text can be clicked on to navigate to the relevant section:

- Introduction
- Vision statement
- Nursing and care
- Governance
- Research
- Education and training
- Resources and buildings
- National Hospital Development Foundation
- Linked hospitals
- Contact us

## ■ Services

- General Neurology
- Hyper Acute Stroke Unit
- Acute Brain Injury / Stroke Unit
- Autonomic Unit
- Centre for Neuromuscular Diseases
- Critical Care
- Dementia Centre
- Epilepsy
- Headache
- Hyper Acute Stroke Unit
- Metabolic Medicine
- Movement Disorders
- Multiple Sclerosis
- National Prion Clinic
- Neuro-anaesthetics
- Neurogenetics
- Neuroimmunology
- Neuro-metabolic Unit
- Neuro-oncology & Brain Tumour Unit
- Neuro-ophthalmology
- Neuro-otology & Voice Disorders
- Neuropathology
- Neurophysiology
- Neuro-psychiatry
- Neuropsychology
- Neuroradiology
- Neuro-rehabilitation
- Neurosurgery
- Pain management
- Spasticity
- Spinal Surgery
- Uro-neurology

# Introduction

The National Hospital for Neurology and Neurosurgery (NHNN) is the UK's largest dedicated neurological and neurosurgical hospital treating over 6,000 inpatients, 120,000 outpatients and 8,000 day cases each year. Celebrating 150 years this year, it provides comprehensive services for the diagnosis, treatment and care of all conditions that affect the brain, spinal cord, peripheral nervous system and muscles.

It is part of the *University College London Hospitals Foundation Trust*, rated "excellent, excellent" by the *Care Quality Commission* and "Hospital Trust of the Year" by Dr Foster. Together with its neighbour, the Institute of Neurology, it is a major international centre for research and training with UCL being ranked fourth best University in the world. It also plays a large role in the recently established Academic Health Science Centre – *UCL Partners* with neurology being one of the major themes.

The NHNN has over 200 inpatient beds, with a dedicated day care facility for tests, investigation and treatment. We also have access to hotels, which offer a flexible service for patients who do not need to stay in hospital overnight.

With 32 outpatient consulting rooms, we offer around 200 outpatient clinics every week covering all aspects of neurology, neurosurgery, neuropsychology and neuro-rehabilitation.

There are many specialist units including dementia, epilepsy, multiple sclerosis and stroke. There is a pioneering patient-centred neuro-rehabilitation service and the largest specialised neurosurgical-ITU and the only neuro-medical ITU in the country.

Recent major developments include the MRC Centre for Neuromuscular Diseases which brings together research and clinical care for patients with disorders of muscle and peripheral nerve; and a new state-of-the-art neuroradiology department with the UK's first interventional MRI scanner allowing surgeons to perform MRI imaging during brain surgery operations.

*Divisional Clinical Director - Dr Mike Hanna*

*Divisional Manager - Jackie Sullivan*



◀ BACK NEXT ▶

## Vision statement

*NHNN, as part of UCLH and UCLP, is committed to delivering top quality patient care, excellent education and world class research. In collaboration with our close partner the Institute of Neurology, we aim to continue to develop and maintain an unrivalled critical mass of research and clinical expertise to develop better treatments for patients with neurological diseases.*



◀ BACK NEXT ▶

## Services > General Neurology

The hospital contains Europe's largest collection of consultant neurologists which allows the full spectrum of neurological disorders to be comprehensively managed. The NHNN runs several general neurology clinics daily and patients with any neurological disorder may be referred to these clinics, including patients requiring urgent appointments. Where required, patients seen in general neurology clinics may be transferred to specialist clinics at NHNN.

### *Outpatient Clinical Neurology*

The majority of the 200 outpatient clinics held each week at the National are associated with clinical neurology. These include both general neurology and specialist neurology clinics.

### *Inpatient Clinical Neurology*

Inpatient clinical neurology services are concentrated on three separate wards. Following admission, patients undergo a series of pre-booked investigations ensuring convenience for the patient and, at the same time, allowing the most efficient use of beds.

In addition, the hospital runs a 12-bed acute brain injury unit and a 7-bed telemetry unit for specialized investigations of patients with epilepsy.

A dedicated day case unit for clinical neurology patients provides a further level of choice and responsiveness for patients who require treatments which can be given on a day-case basis.

#### **Choose and book**

##### **To refer to this service:**

Select 'Adult Neurology' or 'Second Opinion Adult Neurology'

##### **To contact this service:**

[nhnnchooseandbook@uclh.nhs.uk](mailto:nhnnchooseandbook@uclh.nhs.uk)

Telephone: 020 7692 2409

#### **Non choose and book**

##### **To refer to this service:**

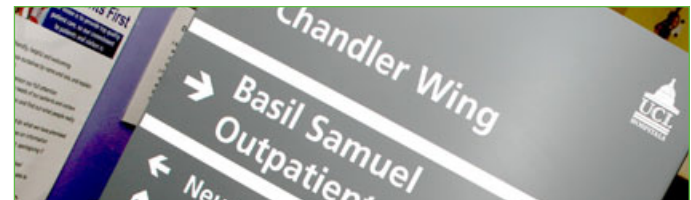
Write "Dear Dr" to: Patient Booking Team. (see [contact us](#) for address)

##### **To contact this service:**

[nhnnappointments@uclh.nhs.uk](mailto:nhnnappointments@uclh.nhs.uk)

Telephone: 020 7692 2371

*Clinical Lead - Dr Paul Jarman (outpatients), Dr Mary Reilly (inpatients)*



◀ BACK NEXT ▶

## Services > Hyper Acute Stroke Unit (HASU)

UCLH as part of UCL Partners is proud to be designated as one of eight Hyper Acute Stroke Units (HASU) in London, the only one in the North Central London, as part of Healthcare for London's plan for the improvement in the quality of stroke care.

The current HASU/Stroke Unit model consistently delivers high quality stroke care and excellent outcomes for stroke patients by taking advantage of world class expertise at UCLH and at the NHNN. UCLH/NHNN in partnership with UCL/Institute of Neurology has the largest translational academic stroke program in London and one of the largest in Europe.

The HASU forms part of the comprehensive neurosciences service. The unit is based at UCLH and accepts FAST positive patients. It has a highly skilled multi-disciplinary team led by the Queen Square Division. It will provide rapid assessment, thrombolytic and interventional treatment to patients in the hyperacute phase following stroke.

*“you have assembled an extremely talented and dedicated team of health care professionals and should be commended for this”*

The dedicated HASU will admit all acute stroke patients in North Central London and bring experts and equipment under one roof to provide world-class treatment 24-hours a day, reducing death rates and long-term disability.

This includes:

- rapid assessment – a patient will arrive in the specialist stroke centre, be assessed by a specialist and have access to a brain scan within 30 minutes of arrival;
- early treatment using clot-busting drugs (thrombolysis), if the scan shows they are needed;
- 24/7 monitoring and physiologic intervention in a high dependency bed;
- and a multi-disciplinary specialist team on call 24/7; including consultant neurologists, neurosurgeons and interventional radiologists, specialist nurses and therapists

**To contact this service:**  
Telephone: 07931 569 730

*Clinical Lead - Dr Nicholas Losseff*

◀ BACK NEXT ▶

## Services > Acute Brain Injury / Stroke Unit

We have a 17-bed Acute Brain Injury / Stroke Unit as part of the Healthcare for London's redesign of the specialist stroke services across London. The Stroke / Acute Brain Injury Unit is the next step of care for stroke patients who come to the HyperAcute Stroke Unit at UCLH. This unit aims to maximise functional recovery by exploring all means of neural protection and restoration after single incident brain injury. This provides organised acute inpatient treatment, care and rehabilitation followed by structured referral and follow-up for patients who have suffered stroke or a brain injury due to stroke, subarachnoid haemorrhage or head injury.

Inpatient activity is complemented by a Nurse Specialist-led outreach service to each of the hospitals in the Trust and a follow-up outpatient service for recently discharged inpatients. This service includes a one-stop stroke clinic and a two-stop brain injury clinic, when outpatients have imaging and a neuropsychological assessment on the same day (stroke) or two weeks previously (brain injury), followed by consultant-led clinical assessment. The Service has close clinical links with the Hyperacute Stroke Unit at UCLH, as well as the Neurorehabilitation Unit and Department of Neuropsychology at NHNN, and the Cardiac Department at the Heart Hospital.

To contact this service:

[teresa.feeney@uclh.nhs.uk](mailto:teresa.feeney@uclh.nhs.uk)

Telephone: 0845 1555 000 Ext 723416

*Clinical Lead - Dr Richard Greenwood*



◀ BACK NEXT ▶

## Services > Autonomics

The autonomic nervous system supplies and influences virtually every organ in the body. Additionally, it is involved in major integrative processes such as control of blood pressure and body temperature.

The Autonomic Unit provides a comprehensive national tertiary clinical service (combining both investigation and management) for a wide variety of autonomic disorders. The unit enables people with autonomic symptoms, some of which are multiple and complex, to successfully manage their daily lives. Some examples are:

- Pure Autonomic Failure
- Autonomic dysfunction complicating Parkinson's disease
- Multiple System Atrophy (MSA)
- Sweating dysfunction (e.g. hyperhidrosis, compensatory hyperhidrosis and anhidrosis)
- Holmes-Adie Syndrome, Harlequin's Syndrome
- Autonomic dysfunction in spinal cord injury including autonomic dysreflexia
- Neurally mediated syncope (vasovagal, carotid sinus hypersensitivity and situational e.g. swallow, micturition syncope)

- The Postural Tachycardia Syndrome (PoTS)
- Neurogenic hypertension
- Autonomic diabetic neuropathy

There are four laboratories incorporating the latest advances in non-invasive technology and a catecholamine laboratory for the measurement of various autonomic neurotransmitters.

As autonomic dysfunction is a feature of many neurological conditions, there is close and active clinical collaboration with many *NHNN* departments and disciplines including clinical neurophysiology, clinical neuropsychology, movement disorders, and behavioural psychotherapy. Research affiliations include the *Functional Imaging Laboratory* at the *ION*, the *ICN*, the Department of Medicine at *UCL*, and the *National Amyloidosis Centre* at the Royal Free Hospital.

### To refer to this service:

Write "Dear Dr" to: The Autonomic Unit (see [contact us](#) for address)

### To ask a question:

Telephone: 0845 155 5000 Ext 723413

*Clinical Lead - Prof Christopher Mathias*

## Services > Dementia Centre

The Cognitive Disorders Service runs in parallel with the Dementia Research Centre (DRC), part of the Department of Neurodegenerative Disease at the ION. The clinical and research components form a national centre of excellence for diagnosis and treatment of patients with cognitive problems, and the group is recognised internationally for ground breaking research in dementia.

All forms of cognitive disorder are seen; however, we have particular expertise in young onset dementia, familial dementias and unusual degenerative diseases. Progressive disorders such as Alzheimer's disease (AD), vascular dementia or frontotemporal dementia are commonly seen, but other cognitive problems (both progressive and non-progressive) are also assessed including amnesia, aphasia, visuo-spatial problems, apraxia, facial recognition or attentional problems.

The clinic has a national referral base and has agreed referral pathways with the local PCTs. Referrals are accepted from primary, secondary and tertiary care.

Patients are assessed in a consultant-led multidisciplinary clinic, including neurology, psychiatry, psychology, imaging, specialist nurse, neurophysiology and allied disciplines. Where appropriate, patients are investigated on the same day with MRI, EEG and psychology. If necessary they can be admitted for further investigations to the Day Case Unit at the NHNN.

Ongoing communication is provided by the award-winning national CANDID (counselling and diagnosis in dementia) phone line and patient support groups.

In addition to clinical care, all patients are offered the opportunity to participate in clinical trials and other studies at the DRC, and the service has close links with DeNDRoN (Clinical Research network for Dementia and Neurodegenerative diseases) [www.dementia.ion.ucl.ac.uk](http://www.dementia.ion.ucl.ac.uk).

### Choose and book

#### To refer to this service:

Select 'Cognitive' under 'Neurology'

#### To contact this service:

[nhnnchooseandbook@uclh.nhs.uk](mailto:nhnnchooseandbook@uclh.nhs.uk)

Telephone: 020 7692 2409

### Non choose and book

#### To refer to this service:

Write "Dear Dr" to: Cognitive Disorders Clinic (see [contact us](#) for address)

#### To contact this service:

[cognitivedisordersclinic@uclh.nhs.uk](mailto:cognitivedisordersclinic@uclh.nhs.uk)

Telephone: 08451 555 000 ext 723171

*Clinical Lead - Dr Catherine Mummery*

◀ BACK NEXT ▶

## Services > Critical Care

The **Neurosurgical Intensive Care Unit (SITU)** was re-launched in summer 2009 following extensive refurbishment and is a state-of-the-art 15-bed facility with nine level 3 beds and six level 2 beds. The unit provides a regional referral service for critically ill neurosurgical patients, particularly those with head injury and brain haemorrhage, from acute NHS Trusts within our network as well as a national tertiary referral service. In addition, the unit provides a regional and national service for patients admitted to *NHNN* for complex specialist neurosurgical and spinal interventions. The unit has facilities for comprehensive multimodal intracranial monitoring at each bed and access to all relevant diagnostic and support services. We have established protocol-guided management, based on expert consensus guidance, to ensure the delivery of high-quality clinical care. Clinical audit and robust governance arrangements also underpin our services.

The SITU multi-disciplinary team comprises medical staff, nursing staff, specialist therapists, pharmacists and other professional groups. A daily consultant intensivist-led ward round is the focus for patient management discussions and clinical decision making. In addition, daily review of patients by a consultant microbiologist provides high quality advice as well as promoting excellent standards of infection control.

Close collaboration with colleagues on MITU at *NHNN* and the general ICU at *UCLH* allows access to other expert critical care input. Support by colleagues in neurosurgery, neuroradiology and neurophysiology ensures rapid access to diagnostic opinion and intervention. There is also access to a variety of specialist non-neuroscience opinion from colleagues on the main campus of *UCLH*.

SITU is recognised for training of medical and nursing staff and is the focus of an internationally-recognised, multidisciplinary research group. >>



◀ BACK NEXT ▶

## Services > Critical Care

The **Neuromedical Intensive Care Unit (MITU)** at NHNN is the only unit in the UK dedicated to the intensive care treatment of neuromedical disorders – as with the SITU this has been relaunched in Summer 2009 and is state-of-the-art. It has built up an unrivalled experience in managing both common and rare neurological diseases that require respiratory support.

It has an integrated multidisciplinary team which includes neurologists, anaesthetists, nursing staff, physiotherapists, speech therapists and dieticians. All have special expertise in the management of the complex neurological disorders seen in the unit including the diagnosis and treatment of conditions such as Guillain-Barré syndrome, status epilepticus, status dystonicus and encephalitis. The unit is also responsible for the Trust's thymectomy service and annually performs one quarter of the UK cases. We have published on the efficacy of this treatment for myasthenia gravis.

The unit prides itself on the involvement of relatives in the overall management of the patient. Inevitably, some patients with severe disease may not be able to be weaned from mechanical ventilation. As a result, difficult and sensitive ethical decisions have to be discussed with patients and their relatives. The team within the unit is very experienced in dealing with this dilemma.

To contact this service:  
SITU: 0845 155 5000  
MITU: 0207 892 8718

*Clinical Lead - Dr Martin Smith (SITU), Dr Nick Hirsch (MITU)*



◀ BACK NEXT ▶

## Services > Epilepsy

The epilepsy group at NHNN is the largest tertiary epilepsy service in the UK. Patients are assessed and treated by a wide range of professionals, including neurologists, neuro-psychologists, nurse specialists, neuro-surgeons, neuro-psychiatrists and social workers.

The group is integrated with the UCL Institute of Neurology at Queen Square and the Chalfont Centre, where additional inpatient facilities and long-term residential care is provided. We have an active epilepsy surgery programme and through our links with the UCL Institute of Neurology, patients have access to the latest diagnostic and therapeutic advances. In all the *NHNN* Epilepsy Service receives 1200 new referrals per year and has over 9000 patients under active follow-up.

### *Chalfont*

*The National Society for Epilepsy* (NSE) is the largest medical charity in the field of epilepsy in the UK, providing services for people with epilepsy for over 100 years. Based in Chalfont St Peter, Buckinghamshire, UK, its mission is "to enhance the quality of life of people affected by epilepsy by promoting research, education and public awareness and by delivering specialist medical care and support services." The NSE has close partnerships with *NHNN* and the *UCL Institute of Neurology*.

The purpose built *Gowers Assessment Unit* in Chalfont St Peter is a 26-bed facility has the latest video-EEG telemetry, MRI, drug level monitoring, neurology, neuropsychiatry and psychology, and admits 750 patients per year from all over the UK and Ireland for in-depth multi-disciplinary assessment and treatment. [www.epilepsysociety.org.uk](http://www.epilepsysociety.org.uk)

The group aims to provide a first-class local epilepsy service with strong links to general practice, other departments in the hospital and tertiary care. Specialist clinics include a "first seizure" clinic, an obstetric neurology clinic, refractory epilepsy clinics, helplines and access to a specialist epilepsy counsellor.

#### Choose and book

**To refer to this service:**

Select 'Epilepsy'

**To contact this service:**

[nhnnchooseandbook@uclh.nhs.uk](mailto:nhnnchooseandbook@uclh.nhs.uk)

Telephone: 020 7692 2409

#### Non choose and book

**To refer to this service:**

Write "Dear Dr" to: Epilepsy service (see [contact us](#) for address)

**To contact this service:**

[nhnnappointments@uclh.nhs.uk](mailto:nhnnappointments@uclh.nhs.uk)

Telephone: 020 7692 2371

*Clinical Lead - Prof John Duncan*

◀ BACK NEXT ▶

## Services > Headache

The Headache Group runs both a clinical and research service, including a large outpatient and inpatient service. The dedicated inpatient service is unique to the United Kingdom, offering treatments that are not readily available elsewhere.

In addition to the three consultant neurologists, the clinical service is supported by a locum consultant neurologist, three clinical nurse specialists, junior doctors and research fellows.

The service is dedicated to tertiary referrals from patients with intractable head and facial pain disorder who have been seen by neurologists elsewhere in the country.

The range of pain disorders includes chronic migraine, medication overuse headache, cluster headache, paroxysmal hemicrania, SUNCT, hemicrania continua, new persistent daily headache, and facial pain.

There are close links with neurosurgery and the Hospital runs a dedicated Occipital Nerve Stimulation clinic.

### Choose and book

#### To refer to this service:

Select 'Adult Neurology' or 'Second Opinion Adult Neurology'

#### To contact this service:

[nhnnchooseandbook@uclh.nhs.uk](mailto:nhnnchooseandbook@uclh.nhs.uk)

Telephone: 020 7692 2409

### Non choose and book

#### To refer to this service:

Write "Dear Dr" to: Patient Booking Team (see [contact us](#) for address)

#### To contact this service:

[nhnnappointments@uclh.nhs.uk](mailto:nhnnappointments@uclh.nhs.uk)

Telephone: 020 7692 2371

This service only accepts tertiary referrals so if you would like to refer to a Headache specialist first refer to 'adult neurology' and we will refer on if necessary.

*Clinical Lead - Dr Manjit Matharu / Dr Anish Bahra*

“You spoke to me as a person,  
not just a number”

◀ BACK NEXT ▶

## Services > Metabolic Medicine

The Charles Dent Metabolic Unit is one of the largest and longest established services in the world for the treatment of adolescents and adults with inherited metabolic diseases. We are one of the designated national lysosomal storage disease centres. The unit provides specialist medical, dietetic and nursing advice and has a purpose-built metabolic diet kitchen to support treatment and education of patients. We also have an infusion unit which provides the facilities needed for patients on enzyme replacement and other therapies.

*“I have been coming here for twenty years and you never cease to amaze me. Your dedication, care and hard work is unparalleled”*

### To refer to this service:

Write "Dear Dr" to: Charles Dent Metabolic Unit  
(see [contact us](#) for address)

### To contact this service:

[robin.lachmann@uclh.nhs.uk](mailto:robin.lachmann@uclh.nhs.uk)  
Telephone: 020 7829 8778

*Clinical Lead - Dr Robin Lachmann*



◀ BACK NEXT ▶

## Services > Movement Disorders

The movement disorders group specialises in the assessment, diagnosis and treatment of people with diseases such as Parkinson's disease, dystonia, tremor, myoclonus and chorea. The group is also a major centre providing for the surgical treatment (including deep brain stimulation) of movement disorders, particularly Parkinson's disease, dystonia and essential tremor. Finally, the group also makes a major contribution to education and research in movement disorders.

We offer a number of specialist clinics or services including apomorphine therapy, botulinum toxin, paroxysmal movement disorders, specialised neurophysiology and assessment of jerks, spasms and stiffness. We offer a multidisciplinary clinic for evaluation of patients with movement disorder in view of Deep Brain Stimulation.

### Choose and book

#### To refer to this service:

'Movement disorder' under 'Neurology'

#### To contact this service:

[nhnnchooseandbook@uclh.nhs.uk](mailto:nhnnchooseandbook@uclh.nhs.uk)

Telephone: 020 7692 2409

### Non choose and book

#### To refer to this service:

Write "Dear Dr" to: Patient Booking Team (see [contact us](#) for address)

#### To contact this service:

[nhnnappointments@uclh.nhs.uk](mailto:nhnnappointments@uclh.nhs.uk)

Telephone: 020 7692 2371

*Clinical Lead - Prof Andrew Lees*



◀ BACK NEXT ▶

## Services > Multiple Sclerosis

The MS multidisciplinary team offers a wide range of expert specialist advice regarding MS management. Specialist clinics and services include a one stop diagnostic clinic, rapid access relapse management service, disease modifying therapies, current research projects, symptom management, rehabilitation, complex symptom management and end of life care. We have a team of specialist nurses who provide support and run both conventional outpatient clinics and telephone clinics.

People want access to timely assessment, expertise and advice and that people's needs may vary according to the stage of their condition. In order to meet these needs we have set up a number of clinics that aim to make sure that our patients see the right person, in the right place, at the right time. >>

*“I wanted to thank you because I remember you saying that you would hold my hand, that you would stay by me, with me throughout the operation and these two things gave me hope and comfort in a moment of real uncertainty and fear”*



[← BACK](#) [NEXT →](#)

## Services > Multiple Sclerosis

- Demyelination Diagnostic Clinic (DDC) - for people who are suspected of having MS
- Relapse clinic - designed to discuss any new symptoms or old symptoms
- Disease modifying drug assessment clinics - weekly assessment clinics for patients taking particular treatments
- Assessment, support and education clinic - weekly clinic provides an opportunity for people with MS to discuss concerns about living with MS
- Vocational rehabilitation clinic - to support people with MS in their working or student roles
- MS multidisciplinary clinic – MS symptoms can cause a number of health problems, so this clinic is designed to look at the different problems and provide different outcomes
- Complex needs clinic - our team links up with colleagues in the palliative care team to help address symptoms that have become harder to manage and which may cause increasing disability and loss of independence.
- Telephone review and assessment clinic lead by a Nurse Consultant
- Specialist nurse telephone advice line for assessment and triage between planned clinic visits.

### Choose and book

#### To refer to this service:

'MS' under 'Neurology'

#### To contact this service:

[nhnnchooseandbook@uclh.nhs.uk](mailto:nhnnchooseandbook@uclh.nhs.uk)

Telephone: 020 7692 2409

### Non choose and book

#### To contact this service:

[nhnnappointments@uclh.nhs.uk](mailto:nhnnappointments@uclh.nhs.uk)

Telephone: 020 7692 2371

*Diagnostics - Prof Alan Thompson*

*Disease modifying treatment - Prof David Miller*

*Relapse - Dr Jeremy Chataway*

*Integrated care - Susan Hourihan*

## Services > National Prion Clinic

The National Prion Clinic's (NPC) multidisciplinary team is comprised of consultant neurologists, clinical research fellows, a counsellor and clinical nurse specialists. We offer comprehensive assessment, diagnostic services and investigations for all forms of the disease. This includes neuropsychology, neurophysiology, imaging, genetic testing, and tissue diagnosis. We are a mobile service, visiting patients throughout the UK at short notice to provide clinical expertise for a rare neurodegenerative disease.

Prion diseases remain rare but it is possible that the numbers of people affected by variant CJD, the prion disease linked to BSE, may increase. The NPC is the national referral centre for prion disease, and works closely with the MRC Prion Unit, based at the *Institute of Neurology*. An extensive research programme is seeking to promote early diagnosis and develop treatments for this group of diseases.

*“the support from all the staff is totally excellent”*

The service includes:

- Comprehensive investigations and assessment for all forms of the disease.
- Tonsil biopsy as a means of diagnosing variant CJD.
- Genetic testing (diagnostic and predictive) for inherited/familial prion disease.
- Information and advice, support and counselling for patients and their families, during investigation and diagnosis, and long term follow up care. We aim to work closely with, and provide information and support for professionals working with registered patients in their local area.
- General information and advice by telephone and email.
- Study days, family information days and training workshops.

### To contact the NPC:

Write to: National Prion Clinic (see [contact us](#) for address)  
Telephone: 020 7692 2397

*Clinical Lead - Dr Simon Mead*

◀ BACK NEXT ▶

## Services > Neuro-anaesthetics

The department is responsible for the provision of anaesthetic services to four operating theatres plus the newly commissioned interventional MRI operating suite. In addition, the department also provides anaesthetic support for the Neuroradiology Department. The total caseload for 2009 was over 3200 cases.

Consultant anaesthetists are responsible for both the Surgical and Medical Intensive Care Units as well as having a major input into the Pain Management Unit. The department also leads the Acute Pain Service, an important facet of anaesthetic practice. Recently the role of the department has expanded to include the setting up of an outreach team to allow continuing care when patients are discharged from the Intensive Care Units to the general wards. Similarly, the tracheostomy team, which includes physiotherapists, anaesthetists and speech and language therapists has revolutionised the care of patients with airway problems.

Education is a fundamental role of the department. In addition to providing core training in all aspects of neuroanaesthetic and neurocritical care practice for anaesthetists, additional training for those who wish to pursue a career in neuroanaesthesia is ensured by the provision of clinical fellow posts (which are both popular and keenly contested).

**To contact this service:**

Telephone: 020 7829 8711

*Clinical Lead - Dr Kath Hunt*



◀ BACK NEXT ▶

## Services > Neurogenetics

The Neurogenetics Unit at the National Hospital for Neurology and Neurosurgery offers a fully integrated service encompassing clinical assessment, diagnosis, molecular genetic testing and counselling for neurogenetic conditions.

The Neurogenetics Laboratory provides a regional service for inherited neurological disease and a national and international diagnostic service for rare neurogenetic disorders. In particular, we have clinical and scientific expertise in inherited movement disorders including Huntington's disease ([www.hdresearch.ucl.ac.uk](http://www.hdresearch.ucl.ac.uk)), ataxia and familial Parkinsonian diseases, neuromuscular disorders including peripheral neuropathies, channelopathies and mitochondrial disorders. A comprehensive user manual is available from the laboratory on request.

The laboratory is CPA accredited and a member of the UK Genetic Testing Network and is situated within the Department of Molecular Neuroscience at the *NHNN/UCL*. Close ties with clinical colleagues mean that the service is constantly developing in line with clinical need and so provides users (both patients and medical professionals) with an up-to-date and comprehensive service.

Laboratory staff actively contribute to and supervise research projects. The focus of much of the research is the molecular basis of neurogenetic disorders and these

include channelopathies, neuropathies and mitochondrial disease as well as common diseases such as epilepsy and Parkinson Disease.

### To contact this service:

Write to: Neurogenetics Unit (see [contact us](#) for address)  
 Telephone: 0845 155 5000  
 Professor N.W.Wood - ext 72 4255  
 Head of Laboratory - ext 72 4250

*Clinical Lead - Prof Nick Wood*  
*Head of Laboratory - Dr Mary Davis*



◀ BACK NEXT ▶

## Services > Neuroimmunology

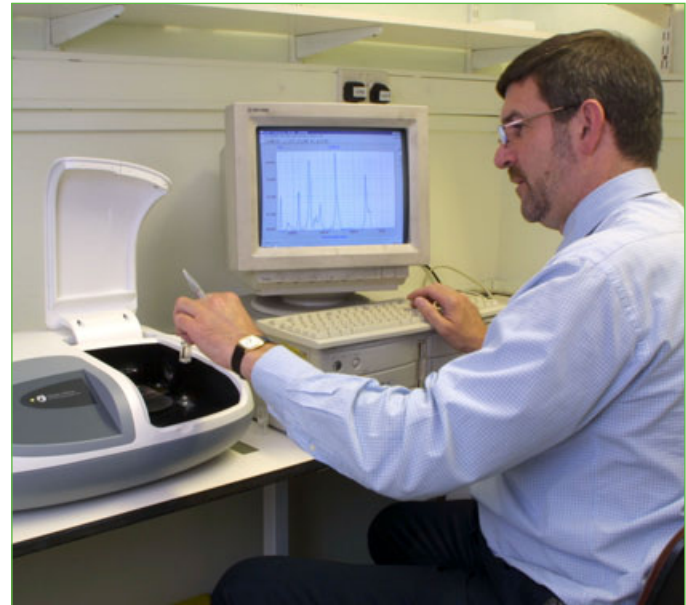
The Department of Neuroimmunology is a unique facility in the United Kingdom both in terms of service provision and as a research centre. It conducts analysis of cerebrospinal fluid (CSF) for the Trust – a vital service that allows the rapid and accurate diagnosis of a multitude of acute and chronic neurological diseases. Bacterial meningitis remains one of the most devastating acute infections of the CNS and successful treatment of this condition requires rapid analysis of the CSF. The department can provide results of CSF analysis within ten minutes of receiving the specimen.

In addition to processing some 2,000 CSF samples per annum from the Trust Hospitals, the department also analyses approximately 5,000 samples from other national and international centres; it is thus the busiest laboratory of its type in the world. All results of analysis are held within a database which now contains almost 100,000 entries – a unique library for both clinical and research purposes.

### To contact this service:

Write to: Neuro-immunology and CSF Laboratory  
(see [contact us](#) for address)  
Telephone: 020 7676 2152

*Clinical Lead - Dr Mike Lunn*



◀ BACK NEXT ▶

## Services > Neuro-metabolic Unit

The Neuro-metabolic Unit, is the only designated supra-regional centre in the UK for the investigation of neuro-metabolic disorders. It provides a unique range of investigations and clinical advice encompassing mitochondrial, neurotransmitter, pterin and amino acid disorders and utilises state of the art analytical technologies. In addition to servicing the needs of the UCLH Trust, due to its status as a UK referral centre, it receives clinical samples and requests for advice from all the major teaching hospitals and increasingly many district general, as well as international hospitals.

The activities of the unit support many groups within the NHNN and the wider activities of UCLH Trust. In particular, close clinical associations continue to be forged with our colleagues within the Movement Disorders, Muscle, Neurogenetic, Charles Dent Metabolic and Intensive Care Units.

### To contact to this service:

Write to: Neurometabolic Unit (see [contact us](#) for address)  
Telephone: 0845 155 5000 Ext 723818

*Clinical Lead - Dr John Land*



◀ BACK NEXT ▶

## Services > Centre for Neuromuscular Diseases

The Centre for Neuromuscular Diseases draws together the expertise of a large team of specialist clinical neurologists, neurophysiologists, neuropathologists, neurophysiotherapists and specialist nurses in the clinical management of neuromuscular muscle wasting diseases such as motor neuron disease, myasthenia gravis, muscular dystrophy and peripheral neuropathy. In addition there is an active clinical and preclinical research programme into these disorders. As such, it is one of the leading centres for research into neuromuscular diseases in the UK.

We see around 3,500 patients each year in the muscle, peripheral nerve, motor-neurone disease and myasthenia clinics. The muscle and peripheral nerve services have both experienced a rapid expansion in recent years, driven by demand for treatment. We are also actively involved in research into the genetic and acquired neuromuscular diseases, and in clinical trials of new treatments and offer specialist clinics for genetic Neuromuscular Diseases.

We have recently been awarded a grant to set up the [MRC Centre for Neuromuscular Diseases](http://www.ucl.ac.uk/neuromuscular) at UCL and the National Hospital, in conjunction with the University of Newcastle and Great Ormond Street Hospital. The Centre, the first of its kind in the UK, promotes translational research in neuromuscular disease - a bench to bedside approach that is intended to facilitate the rapid transfer of research knowledge to the clinical environment.

For more information please go to our website  
[www.ucl.ac.uk/neuromuscular](http://www.ucl.ac.uk/neuromuscular)

**To contact to this service:**

Telephone: 0845 155 5000 Ext 723014

*Clinical Lead - Prof Mike Hanna and Dr Mary Reilly*



◀ BACK NEXT ▶

## Services > Neuro-oncology

The Neuro-oncology service treats patients with, or suspected of having, any form of brain or spinal tumour. We provide multi-disciplinary care for patients who are referred from their GPs or from other hospitals. Although brain and spinal tumours are relatively rare conditions they cause significant problems for patients and carers alike and require a variety of different experts to look after the patients.

In late 2010 we will be opening a brand new Brain Tumour Unit which will be a 12 bed specialist ward.

The clinical service is run through a weekly multidisciplinary team meeting (MDT) and works closely with research groups based at the Institute of Neurology, and UCL Cancer Institute. Particular research interests include imaging of patients with brain tumours, new radiotherapy techniques including Intensity Modulated Radiotherapy (IMRT) and molecular biology of brain tumours. There are close links with the National Cancer Research Network Brain Tumour Group and the European Organisation for Research and Treatment of Cancer (EORTC).

The service currently includes:

- Comprehensive investigation and treatment for all forms of brain and spinal tumour including brain metastases
- Investigation of patients with paraneoplastic neurological syndromes
- Molecular testing for 1p19q deletions in oligodendrogliomas and MGMT methylation in Glioblastoma Multiforme
- Information, advice, support and counselling for patients and their families, both during investigation, on diagnosis, and long term follow up. We also work closely with professionals working in palliative care services
- Access to clinical trials

### To contact this service:

[braintumourunit@uclh.nhs.uk](mailto:braintumourunit@uclh.nhs.uk)

Telephone: 020 7391 8830

*Clinical Lead - Dr Susan Short / Dr Jeremy Rees*

*Neurosurgery Lead - Mr Neil Kitchen*

## Services > Neuro-ophthalmology

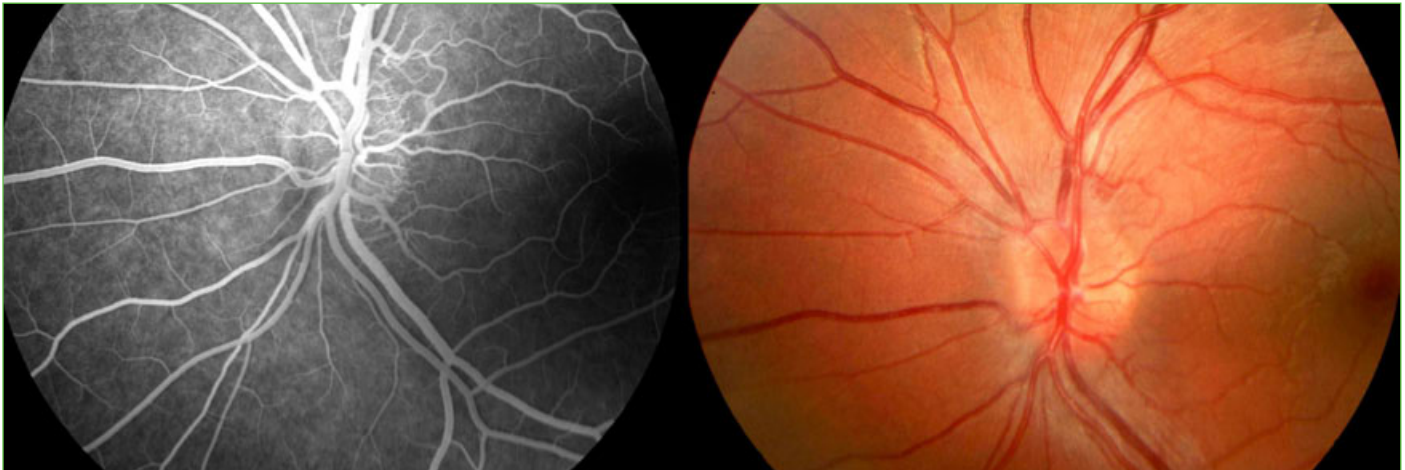
Typically, patient care is multidisciplinary. Specialist diagnostic and follow-up clinics are provided within the Eye Clinic which are most often used for patients who develop visual problems in association with neurological disease, for example idiopathic intracranial hypertension, pituitary tumours, epilepsy, multiple sclerosis and cerebrovascular disease. There are additional facilities for EMG-guided orbital botulinum therapies and pupillometry, and there are close links with UCL Institutes of Neurology and Ophthalmology, and Moorfields Eye Hospital.

### To contact this service:

Write to: Esther Meredith, Department of Neuro-Ophthalmology  
(see [contact us](#) for address)

Fax: 020 7676 2041

*Clinical Lead - Dr James Acheson*



◀ BACK NEXT ▶

## Services > Neuro-otology and Voice Disorders

The Department of Neuro-otology provides a specialist national service for the diagnosis, investigation, management and rehabilitation of complex, auditory, vestibular and voice disorders, including skull base surgery. The service is provided on an outpatient basis but also includes care of in-patients at the NHNN and other units of the UCLH Trust.

The department benefits from a multidisciplinary team including audio-vestibular physicians, otolaryngologists, audiologists, a specialist nurse, a cognitive behavioural therapist and a speech and language therapist and provides an integrated rehabilitation programme with both clinical and research physiotherapists.

### Voice Disorders

We also have a dedicated multidisciplinary clinic for patients with voice and swallowing disorders associated with neurological conditions e.g. Parkinson's, Tourettes, spasmodic dysphonia, or those recovering from stroke or heart surgery. The services' roots are firmly planted in movement disorders, offering a regular botulinum toxin service as well as other surgical and non-surgical management. The clinic is one of the largest of its kind in the UK currently caring for approximately 1000 patients per year. [john.rubin@uclh.nhs.uk](mailto:john.rubin@uclh.nhs.uk)

#### To contact this service:

Write to: Department of Neuro-otology (see [contact us](#) for address)  
[linda.luxon@uclh.nhs.uk](mailto:linda.luxon@uclh.nhs.uk)  
 Telephone: 0845 155 5000 ext 723385

*Clinical Lead - Prof Linda Luxon*

*“I cannot begin to thank you for the help you have given me with my balance problems. I can now begin to live my life again”*



◀ BACK NEXT ▶

## Services > Neuropathology

The Department of Neuropathology at Queen Square is one of the leading academic and diagnostic neuropathology departments in the UK. The department provides service for the NHNN, UCLH, and receives a substantial number of national referrals.

The department contributes to five weekly MDTs (Multidisciplinary Team Meetings) and carries out regular audits and a weekly case review forum.

The department has CPA accreditation, and is approved for training purposes by both the Royal College of Pathologists and the Health Professions Council.

The department now also provides one of the largest paediatric neuromuscular pathology services in the UK, including a large referral service through the National commissioning Group (NCG). The 5 new staff are located in the department of Neuropathology and jointly work in the Institute of Child Health/Great Ormond street Hospitals.

The division provides:

- a speedy, high quality diagnostic service to the NHNN. Samples are delivered by porter or pneumatic tube, directly from theatres or the wards and the results are transmitted directly to the electronic patient record.

- high profile research.
- a modern teaching programme for medical students and postgraduates.
- a full mortuary and post-mortem service.
- expertise in neuro-oncology, neurodegenerative diseases, epilepsy, inflammatory diseases of the CNS, prion diseases, peripheral nerve and adult and paediatric muscle.
- molecular brain tumour diagnostics: MGMT PCR (prognostic test for chemosensitivity) on all high grade glioma operated at NHNN (ca 130p.a.), making us the first and only UK hospital offering this service to all patients. Other tests are 1p19q LOH, EGFR amplification, EGFRvIII mutation analysis, and IDH-1/2 sequencing. We also offer a referral service to all UK hospitals.

To contact this service:

[www.ion.ucl.ac.uk/divisions/neuropathology](http://www.ion.ucl.ac.uk/divisions/neuropathology)

Telephone: +44 (0)20 7676 2170

*Clinical Lead - Prof Sebastian Brandner*

◀ BACK NEXT ▶

## Services > Neurophysiology

The Department of Clinical Neurophysiology at the NHNN is responsible for a wide range of neurophysiological procedures, principally electromyography (EMG) and nerve conduction studies, EMG-guided botulinum toxin (BoTox) injections, electroencephalography (EEG), evoked potentials (EPs) and intra-operative monitoring (IOM), amounting to a total of approximately 8,000 investigations per annum.

It provides neurophysiological services for the NHNN and other hospitals in the South-East in addition to receiving referrals from elsewhere in the UK and abroad. The department is recognised as a centre of excellence, with an international reputation for pioneering new techniques to investigate nervous system function, and has a major role in the training of neurophysiologists, neurologists, clinical physiologists and researchers.

The department offers a number of specialised techniques, including investigation of ion channel disorders affecting peripheral nerve and muscle, examination of small fibre properties using quantitative sensory testing, laser Doppler Imaging and skin biopsies. A dedicated telemetry unit provides a 24/7 round the clock possibility of EEG monitoring for the investigation of paroxysmal neurological disorders, altered consciousness and assessment for epilepsy surgery. The combination of EEG and EMG investigations are used for the analysis of movement disorders.

Principal areas of current research interest within the department are nerve excitability testing of peripheral nerve and muscle in neuromuscular diseases and evaluation of these techniques as biomarkers for monitoring therapy and in drug discovery studies; the development of effective EEG investigation tools in complex epilepsy and epilepsy surgery; development of instrumentation for simultaneous EEG and functional MRI; development of new neurophysiological techniques in combination with fMRI in the study of facial pain and headache.

### To contact this service:

Write to: Department of Neurophysiology (see [contact us](#) for address)  
Telephone: 020 7380 9046

*Clinical Lead - Prof Martin Koltzenburg*

“My CNS is wonderful. It is such a relief to have someone like her to consult; she knows what I’m talking about, offers advice and puts my mind at rest”

◀ BACK NEXT ▶

## Services > Neuro-psychiatry

The Department of Neuro-psychiatry offers general and specialised outpatient clinics, inpatient admissions and a consultation-liaison service for inpatients admitted to NHNN.

We undertake assessments of patients with:

- Psychiatric symptoms in the context of neurological disorders (e.g. multiple sclerosis, Parkinson's disease and epilepsy);
- Unexplained neurological symptoms (e.g. conversion and somatisation disorders) and
- Psychiatric symptoms in whom an organic cause is suspected.

Where appropriate we offer outpatient treatment (this may include cognitive behaviour therapy, drug therapy, etc). For more complex problems, a multidisciplinary inpatient rehabilitation programme is available.

Our inpatient unit is a tertiary referral centre for assessment, management and treatment of patients with complex neuropsychiatric conditions.

Outpatient services include general neuro-psychiatry clinics, multidisciplinary clinics to assess patients prior to admission for neuropsychiatric rehabilitation programmes and a specialist Tourette's syndrome clinic.

### To contact this service:

Write to: Department of Neuro-psychiatry (see [contact us](#) for address)  
[neuropsych@uclh.nhs.uk](mailto:neuropsych@uclh.nhs.uk)  
 Telephone: 0845 155 5000 ext 723524

*Clinical Lead - Prof Eileen Joyce*



◀ BACK NEXT ▶

## Services > Neuropsychology

Our neuropsychology service has a well-established international reputation for its clinical service and its research and is one of the largest and best established neuropsychology departments in Britain with its team of 15 clinical neuropsychologists. It provides a unique and highly specialised clinical neuropsychological diagnostic and therapeutic service.

The diagnostic service involves a detailed assessment of cognitive functions such as memory, language, perception, planning, reasoning and attention as well as behaviour in patients with suspected or confirmed brain pathology. Conditions such as amnesia, aphasia, dyspraxia, agnosia and dyscalculia are routinely assessed in the department.

The treatment service is tailored both to small groups or individual patients with single incidence acquired brain injury. Psycho educational issues related to further the understanding of the neuropsychological consequences of acquired brain injury as well as specific strategies to reduce the impact of memory; planning and other cognitive disorders on daily living are provided. Both services are available for inpatients and outpatients. Counselling for patients with brain pathology and their relatives is also available.

Highly specialised neuropsychological input is also given for the treatment and management of acute, neurodegenerative and neuroncological conditions. For example we give input to patients suffering from Prion disease, Parkinson's disease, dementia, acute brain injury and various forms of brain tumours. A further important future plan is the development of clinical services for young adults who survive childhood brain tumours, in collaboration with Great Ormond Street Hospital. Our services are available for inpatients and outpatients.

### To contact this service:

Write to: Neuropsychology Department (see [contact us](#) for address)  
[neuropsychology@uclh.nhs.uk](mailto:neuropsychology@uclh.nhs.uk)  
 Telephone: 020 7829 8793

*Clinical Lead - Dr Lisa Cipolotti*

*“You must be very proud of your team at both the clinic and the hospital as they are all customer focussed and obviously dedicated to outstanding patient care”*

◀ BACK NEXT ▶

## Services > Neuroradiology

The Lysholm Department of Neuroradiology is a multi-disciplinary team of around 50 healthcare professionals providing leading-edge neuroradiological services and performing around 27,000 examinations and procedures a year including CT and MRI scanning; diagnostic and interventional neuroangiography; carotid and transcranial Doppler US; general X-ray and theatre work.

All clinical imaging is reported in-house by a team of specialist Neuroradiologists led by 10 consultants. The department introduced PACS (picture archive and communication system) in 2004 allowing the hospital to become totally filmless.

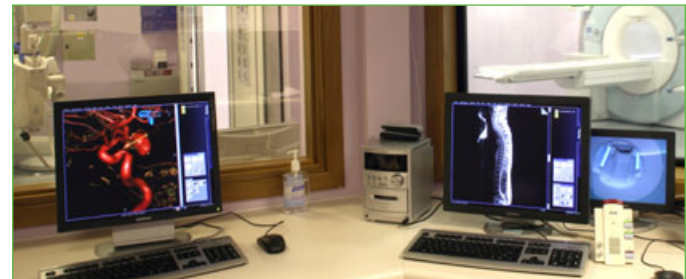
2008 saw the department move into new, purpose built facilities housing a 128 slice CT scanner, a new bi-plane angiography suite, two 1.5T MRI scanners, a 3T MRI scanner and an interventional MRI suite. The interventional MRI suite is a unique installation providing operating theatre, angiography and MRI capabilities in a single room. The department's facilities are due to be augmented in 2010 by a new 1.5T MRI scanner, new ultrasound equipment and a new digital plain film X-ray equipment.

The department has close academic links with UCL and the ION in which many staff hold honorary appointments through the Division of Neuroradiology and Neurophysics, led by the clinical head of department, Professor Tarek Yousry. The Neuroradiological Academic Unit undertakes research aiming to translate emerging advanced neuroimaging methods into clinical practice, to apply these for research in a wide range of specialties such as neuromuscular disease, dementia, stroke, prion disease, neurosurgery and movement disorders, and to develop novel imaging methods, particularly in the area of MRI.

### To contact this service:

Write to: Lysholm Department of Neuroradiology  
(see [contact us](#) for address)

*Clinical Lead - Prof Tarek Yousry*



◀ BACK NEXT ▶

## Services > Neurosurgery

The department provides a comprehensive neurosurgical service covering the full range of neurosurgical pathologies, including all cranial and simple spinal conditions. There is also a complex spine department (see spinal surgery section). In addition to serving the local population it also provides a national and international service for more specialised neurosurgical problems such as epilepsy surgery, surgery for Parkinson's disease and other movement disorders, transoral and skull base surgery for complex pathologies at these sites, complex hydrocephalus and transsphenoidal surgery for hormonally active pituitary tumours.

Complex interdisciplinary procedures are often performed in conjunction with consultants from other specialties, including ENT, maxillo-facial and plastic surgeons. There is a busy multidisciplinary team looking after complex vascular disease, particularly aneurysms and arteriovenous malformations. This includes neurosurgeons, vascular surgeons, interventional neuroradiologists and vascular neurologists. A new brain tumour unit is planned to open in 2010, providing specialist focussed care for this group of patients and their families.

Academic activities benefit from close links to the Department of Neurology, the Institute of Neurology and other university bodies. This multidisciplinary approach to research fosters an atmosphere of academic excellence and ensures that the department remains at the forefront of clinical research. We also have a Neural Regeneration Unit and a neurosurgical consultant specialising in spinal regeneration focussing on spinal cord transplantation for paraplegia – the DePuy Spinal Regeneration Project.

### Choose and book

**To refer to this service:**

Select 'Neurosurgery'

**To contact this service:**

[nhnnchooseandbook@uclh.nhs.uk](mailto:nhnnchooseandbook@uclh.nhs.uk)

Telephone: 020 7692 2409

### Non choose and book

**To refer to this service:**

Write "Dear Dr" to Patient Booking Team (see [contact us](#) for address)

**To contact this service:**

[nhnnappointments@uclh.nhs.uk](mailto:nhnnappointments@uclh.nhs.uk)

Telephone: 020 7692 2371

*Clinical Lead - Miss Joan Grieve*

◀ BACK NEXT ▶

## Services > Pain Management

The Pain Management Centre is a multi-professional group delivering services to people with longstanding pain. Our 32 staff consists of administrators, clinical researchers, doctors, nurses, physiotherapists and psychologists; four clinical teams provide individual consultations. In addition to clinical advice and systemic drug treatment, we also provide a full range of other interventions including TENS, acupuncture, intravenous drug challenges, peripheral and central nerve blocks, radio frequency lesioning and spinal implants. Other specialist areas of expertise are the management of complex neurology and facial pain and complex spinal and urogenital pain.

We also run a pain management programme called COPE (Changing the Outcomes of Pain Experiences) which is led by our psychologists with our pain management physiotherapists. It is an outpatient, cognitive behavioural based group series of sessions. Similar pain management programmes specialise in low back pain and pain of urogenital origin.

We endeavour to provide a holistic service of high quality for our patients within a biopsychosocial model of pain. The clinicians within the department conduct weekly multi-professional meetings with radiologists, rheumatologists and spinal experts (medical, nursing and physiotherapy) to discuss cases of interest, mutual patients, and inpatients

with challenging conditions. We also have links with the Royal London Homeopathic Hospital as many of the patients seen there have similar conditions.

### Choose and book

#### To refer to this service:

Select 'Pain' under 'Neurology'

#### To contact this service:

[nhnnchooseandbook@uclh.nhs.uk](mailto:nhnnchooseandbook@uclh.nhs.uk)

Telephone: 020 7692 2409

### Non choose and book

#### To refer to this service:

Write "Dear Dr" to Patient Booking Team  
(see [contact us](#) for address)

#### To contact this service:

[nhnnappointments@uclh.nhs.uk](mailto:nhnnappointments@uclh.nhs.uk)

Telephone: 020 7692 2371

*Clinical Lead - Dr Barbara Duncan*



◀ BACK NEXT ▶

## Services > Spasticity Management Service

The spasticity service at NHNN offers a comprehensive, responsive multi-disciplinary service to all those who would benefit from input. Therapies provided include multidisciplinary assessments, video clinics, specialist physiotherapy, nurse led telephone clinics, botulinum toxin and intrathecal therapies. Inpatient procedures including trials of both intrathecal phenol and baclofen take place on the Neurorehabilitation Unit, as do implantation of intrathecal baclofen pumps.

### To contact this service:

Write to: Spasticity (see [contact us](#) for address)  
Telephone: 0845 155 5000 Ext 723561

*Clinical Lead - Dr Val Stevenson*

*“Excellent treatment and attention  
I am most appreciative”*



[← BACK](#) [NEXT →](#)

## Services > Spinal Surgery

We provide a specialist spinal surgery service including treatment of degenerative spinal conditions (simple and complex, including those requiring instrumentation), artificial discs, spinal injury, spinal tumours (intra and extra dural, including metastatic disease), scoliosis and syringomyelia. We offer a rapid access service for sciatica. We have weekly multi-disciplinary meetings covering spinal disorders generally with neuroradiology support and a second covering spinal tumours, when there is additional input from neuro-pathologists and oncologists.

### To contact this service:

Write to: Spinal Surgery Referrals (see [contact us](#) for address)  
Telephone: 0845 155 5000

*Clinical Lead - Miss Joan Grieve*



◀ BACK NEXT ▶

## Services > Therapies and Neurorehabilitation

The directorate offers many different services for individuals at all stages of their illness or condition whilst inpatients at NHNN or as outpatients.

We aim to offer a comprehensive, responsive multi-disciplinary service to all those who would benefit from input. Our aim is to optimise an individuals' physical, psychological, social and vocational (or educational) function.



Our services include:

- Outpatient therapy (physiotherapy, occupational therapy including environmental controls assessment, speech and language therapy, orthotics, dietetics, private therapy)
- Inpatient therapy (physiotherapy, occupational therapy, speech and language therapy, dietetics, private therapy)
- Private patient rehabilitation services
- Neurorehabilitation unit (NRU) - 18 beds
- Multidisciplinary neurorehabilitation assessment clinic
- Environmental controls assessment
- Orthotics and functional electrical stimulation
- Multidisciplinary multiple sclerosis services
- Vestibular rehabilitation
- Vocational rehabilitation >>

◀ BACK NEXT ▶

## Services > Therapies and Neurorehabilitation

The Neurorehabilitation Unit at NHNN is an 18 bed unit which specialises in the management of patients with neurological conditions including multiple sclerosis, stroke, spinal cord lesions, neuropathies, cerebral palsy, and genetic disorders. It has particular expertise in the multidisciplinary management of patients with predominantly complex physical disability requiring short periods (two weeks to three months) of rehabilitation. The aim of the NRU is to optimise individual's physical, psychological, social and vocational / educational function through provision of a *focussed, responsive multidisciplinary* inpatient service.

“*The consideration shown to us on the neuro ward and the pain clinic was exceptional*”

### To contact this service:

Write to: Neuro-rehabilitation Services (see [contact us](#) for address)  
Telephone: 0845 155 5000 ext 723486

*Clinical Lead - Dr Diane Playford*



◀ BACK NEXT ▶

## Services > Uro-neurology

Unfortunately many neurological conditions can cause problems with bladder, bowel or sexual function. We offer a multi-disciplinary approach to try and help people with such difficulties.

The clinical department is led by Professor Clare Fowler who specialises in clinical neurology of the bladder and sexual dysfunction. Her particular interests include severe detrusor overactivity due to neurological or non-neurological causes, bladder dysfunction in the context of advancing neurological disease and urinary retention in young women (Fowler's syndrome).

Professor Fowler and the department have made several contributions to uro-neurology including:

- Established uro-neurology as a sub-speciality in UK.
- Introduced several new treatments for severe detrusor overactivity. Most recently helped to establish detrusor injection of Botox to treat severe detrusor overactivity as a clinic procedure
- Described eponymous syndrome of urinary retention in young women, researched pathophysiological mechanisms of condition and established treatment programme of sacral neuromodulation

- Involved in many clinical trials, both "investigator lead" and commercial drug trials of new agents to treat detrusor overactivity or sexual dysfunction of both genders.

To contact this service:

[sheila.reynolds@uclh.nhs.uk](mailto:sheila.reynolds@uclh.nhs.uk)

*Clinical Lead - Prof Clare Fowler*



◀ BACK NEXT ▶

## Nursing and Care

Nurses are central in delivering high quality care for our patients' health needs and shaping our services for the future. Nursing within the field of Neurosciences can be challenging but extremely rewarding. Nurses make a real difference to patients and their families experience of care, with excellent observation and communication skills the cornerstones to detecting changes in our patients and conveying this to the wider multidisciplinary team.

Nurses must constantly strive to develop their knowledge and care alongside recent advances in neurosurgery and neurology, many of which will be evident from this brochure. In our commitment to providing high quality nursing care to all our patients, we are very proud that in conjunction with LSBU, Kings and City Universities we have a robust education and training programme available to all our nursing staff. Our staff development is further supported by a team of Clinical Practice Facilitators based on site.

*“All the staff were excellent, very professional and supportive, nothing was too much trouble.”*

Our nursing services are led by Divisional Senior Nurses, Ellen Butler and Liz Davies. It is their responsibility to provide clinical and professional leadership to all nursing staff within the division. They take a lead in ensuring the hospital environment is clean and welcoming for patients, they monitor patient and relative feedback and work with the ward sisters and charge nurses to develop action plans to ensure privacy and dignity is at the centre of care and that the whole team are aware of the importance of infection control practices.

*Divisional Senior Nurses - Ellen Butler / Liz Davies*



◀ BACK NEXT ▶

# Clinical Governance

Queen Square has its own dedicated Quality and Clinical Governance Department to drive forward the quality agenda. The team is led by Dr Sally Wilson and has three full time staff; Prudence Hardy, Lead Nurse for Clinical Governance, Tom Kirby, Clinical Governance Facilitator and Frances Quinn, Clinical Governance Administrator. The team works with and supports clinicians and other staff to oversee the Clinical Governance Committee. This meets monthly and provides the framework into which the subcommittees report. The subcommittees are; Risk Management, Clinical Audit and Effectiveness, Patient Issues and Patient Experience.

Queen Square has a culture of listening to patients and learning from what they tell us about their experience. We actively seek patient feedback through surveys, questionnaires and electronic response devices. Regular clinical audit at divisional and departmental level helps to ensure clinical effectiveness and to benchmark areas such as cleanliness and hand hygiene. We have adopted the After Action Review process for providing a learning environment and communication tool for all staff across the division.

Quality scorecards developed by all departments have enabled the multidisciplinary team to identify those areas that define quality for their department or service. These

will help monitor performance and allow clinicians to make changes where necessary.

We are working with clinicians to develop an up to date and comprehensive library of patient information to inform and support patients and their relatives or carers.

To contact this service email:  
[qs-governance@uclh.nhs.uk](mailto:qs-governance@uclh.nhs.uk)

*Clinical Lead - Dr Sally Wilson*



◀ BACK NEXT ▶

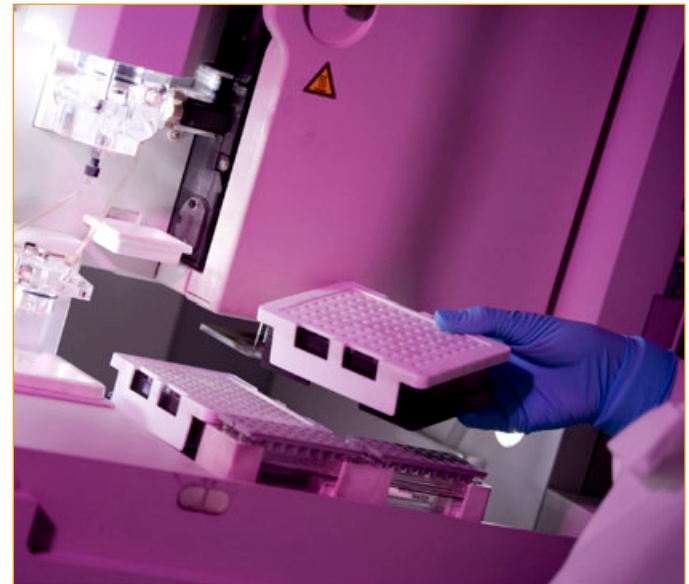
## Research

Neurological disease and neurosciences research represent almost 50% of UCL's biomedical science activity and are ranked second in the world for publications and citations. Over 400 laboratories span the breadth of neuroscience research from molecules to humans with integrated activity spread throughout the institutes and divisions of the School of Life and Medical Sciences (SLMS), and across the clinical facilities of UCLH.

There are several major themes within neurological disease supported by substantial clinical, academic and resource infrastructures that cut across institutional boundaries, reflecting the interdisciplinary nature of the research. These are underpinned at the basic science level by internationally renowned expertise in systems and cognitive neuroscience, cell, molecular and structural biology and genetics, and developmental biology.

Uniquely among UK institutions, UCL & partners were selected by the National Institute for Health Research (NIHR) to host three of the twelve national centres of excellence in translational research: a Comprehensive Biomedical Research Centre (CBRC) (*with 5 key neurology-related themes of neurodegeneration, pain & headache, neurodiagnostics, neurotherapeutics and neuro-imaging*); plus two Specialist Biomedical Research

Centres (SBRCs) focused on child health (at ICH/GOSH); and Ophthalmology (IoO/MEH). They receive substantial funding to translate fundamental biomedical research into clinical research and will be early exploiters of the latest advances in technologies, techniques and interventions for improving health. >>



◀ BACK NEXT ▶

# Research

- UCL generates over 30% of the UK's contribution to the most highly cited publications in neuroscience, more than twice as much as any other UK university.
- In neuroimaging and clinical neurology, UCL produces 65% and 44% of the UK's contribution to the world's most highly cited papers, five-fold larger than that of the next highest UK institution.
- Since 2001, > 647 papers have been published by UCL Neurosciences in specialist journals with an Impact Factor > 10 (*i.e. the premier international science and clinical journals*).
- In excess of 230 papers published since 2001 have been cited more than 100 times (*mean expected in Neuroscience & Behaviour since 2001 is 12.04, & the median is 12.42*).
- The single-most highly cited paper in neuroscience (McDonald et al) has been cited 1437 times. Seven of the world's top 50 most highly cited neuroscientists come from UCL.
- UCL co-hosts the coordinating centre for DeNDRoN the NIHR dementia and neurodegenerative diseases network.



◀ BACK NEXT ▶

# Education/Training

## *Clinical Training*

NHNN plays a key role in postgraduate medical training of neurologists, neurosurgeons and related medical specialties including clinical neurophysiology, neuro-anaesthesia, neuro-radiology, neuro-psychiatry, neuro-otology and neuropathology.

In neurology and neurosurgery, NHNN acts as the hub for London and KSS Deanery rotations and some Eastern Deanery trainees. At any time 16 neurology and 10 neurosurgery SpRs are based at NHNN. The neurology and neurosurgery Training Programme Directors (TPDs) are Dr Paul Jarman and Mr Laurence Watkins respectively.

Aspiring clinical academics in neurology can follow a parallel strand as Walport pre-doctoral Academic Clinical Fellows (ACF) at ST1-3 level with 25% protected research time over 2-3 years and post-doctoral Academic Clinical Lecturers (CL) at ST3+ level with 50% protected research time. These posts provide support and development for trainees with outstanding academic potential, enabling them to prepare for an application for PhD research funding at ACF level and to continue post-doctoral research at CL level. Generic research training skills are also taught and developed as part of the ACF programme. Posts are advertised annually by the London

Deanery and the academic lead for this programme is Prof Geraint Rees and the clinical lead Dr Paul Jarman. There is also a CL post in clinical neurophysiology (contact Prof Martin Koltzenberg).

Medical students from the UCL and Royal Free medical school do neuroscience attachments at NHNN. Undergraduate medical student elective attachments for UK and overseas students are also available.

Professional training of nurses is fully supported; all ward sisters at NHNN have, or are working towards a degree in nursing with structured progression of competencies through Clinical Nurse Specialist to Nurse Consultant level.

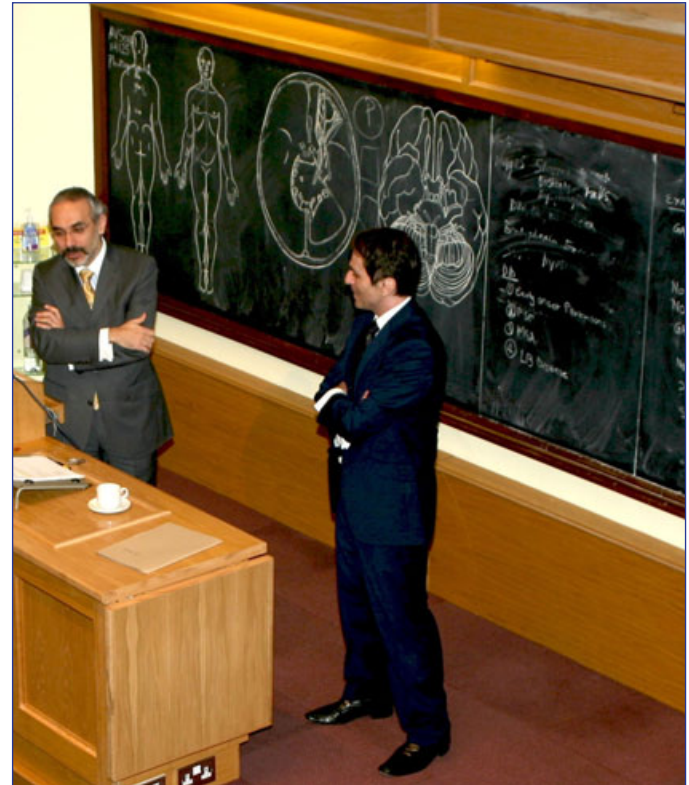
Allied health professionals also benefit from NHNN training; e.g. the undergraduate and graduate courses in Speech & Hearing Sciences. UCL runs the Doctorate in Clinical Psychology which is the largest course of its kind in the UK. >>

# Education/Training

## *Education*

NHNN together with the IoN offers unrivalled opportunities for taught and research degrees in all aspects of neuroscience. At undergraduate level, integrated 3-year BSc programmes are offered in molecular, cellular, developmental and systems neuroscience. Eighteen taught masters courses are offered by UCL Neuroscience. 3- and 4-year PhD programmes and MPhil and MD (Research) degrees are all offered (see [www.ion.ucl.ac.uk/education](http://www.ion.ucl.ac.uk/education) for further details).

A wide range of courses and teaching sessions take place at NHNN/IoN. These include the famous 'Gower's Round' weekly clinical case presentations, the annual GSK lecture series, annual 'short courses' in a wide variety of clinical and academic subjects as well as numerous weekly seminars, invited lectures and lecture series. A weekly teaching timetable is available through the IoN Education Unit office. >>



# Education/Training

## *Facilities*

We have 3 major lecture theatres including a new state of the art lecture theatre in the 33 Queen Square clinical neurosciences building. The NHNN/IoN Rockefeller medical library provides a unique source of neuroscience information and has recently been fully refurbished. The new UCLH Education Centre, with simulation facilities, including video recording and replica operating theatre and clinical areas, is also available to NHNN staff for training in realistic simulations.



◀ BACK NEXT ▶

## Resources and Buildings

The NHNN is based in ten buildings around Queen Square covering 42,000 square meters. This includes the hospital itself as well as a shared estate with IoN, such as the ten storey Queen Square House, five floors of the newly completed Clinical Neuroscience Centre, the Wellcome Trust Centre for NeuroImaging, and the Institute of Cognitive Neuroscience. October 2008 saw the opening of 33 Queen Square, three new MRI scanners and the first neurosurgical interventional operating MRI suite in Europe. This complements existing MR provision around QS in the WTCN, MS NMR unit and at Chalfont. The IoN also has a high-field 9.4T experimental MRI facility for tissue and small animal imaging. The Queen Square Brain Bank at the Institute of Neurology holds a very large collection of human brains donated specifically for research into human neurodegenerative diseases. The collection is backed up by excellent clinical documentation. Additional facilities include Category 3 laboratories, an electron microscopy unit and a magnetoencephalography suite.

Developments for 2010 include the 12 bed brain tumour unit, and the installation of a gamma knife for precision radio-therapy treatment of brain tumours.

The NHNN also runs an epilepsy service at the purpose built *Gowers Assessment Unit* at the *National Society for Epilepsy Centre* at Chalfont St Peter, Buckinghamshire.

The turnover for NHNN is in excess of £100 million and we have over 1000 staff.

Research students are funded by the Research Councils, Wellcome Trust and other charities, for example the UCL Neuroscience (Wellcome Trust/MRC) 4-year PhD programme. MRC grant income from neuroscience generates a significant proportion of the £1.5m annual MRC DTG. Clinical students are funded by SIFT. Postgraduate clinical trainees are funded by MPET. Course and tuition fees contribute to the funding of professional training courses, diplomas, BSc, MSc and higher degrees.



◀ BACK NEXT ▶

# National Hospital Development Foundation

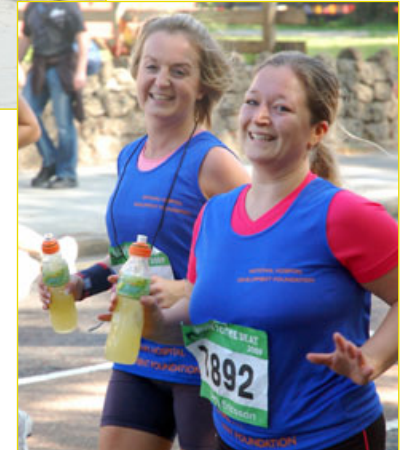
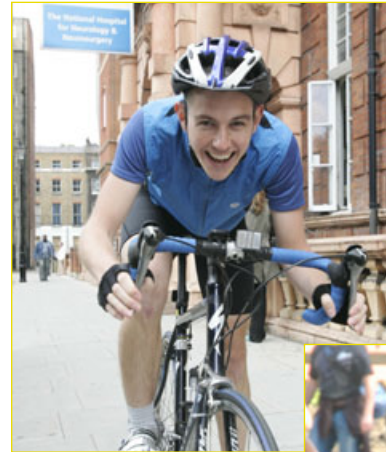
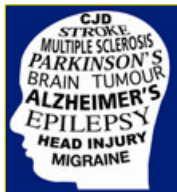
The National Hospital Development Foundation (NHDF) is the charity dedicated to raising funds for the National Hospital for Neurology and Neurosurgery. Over £35 million has been raised since the NHDF was founded in 1984 ensuring that the highest levels of clinical care are matched with the very latest equipment and the best standard of accommodation.

If you would like to support the work of the NHDF or would like more information, please contact us on 020 7829 8724 or email [nhdffundraising@uclh.nhs.uk](mailto:nhdffundraising@uclh.nhs.uk)

National Hospital Development Foundation  
Box 123  
Queen Square  
London  
WC1N 3BG

[www.nhdf.org.uk](http://www.nhdf.org.uk)

Registered charity number 290173



◀ BACK NEXT ▶

# Linked Hospitals

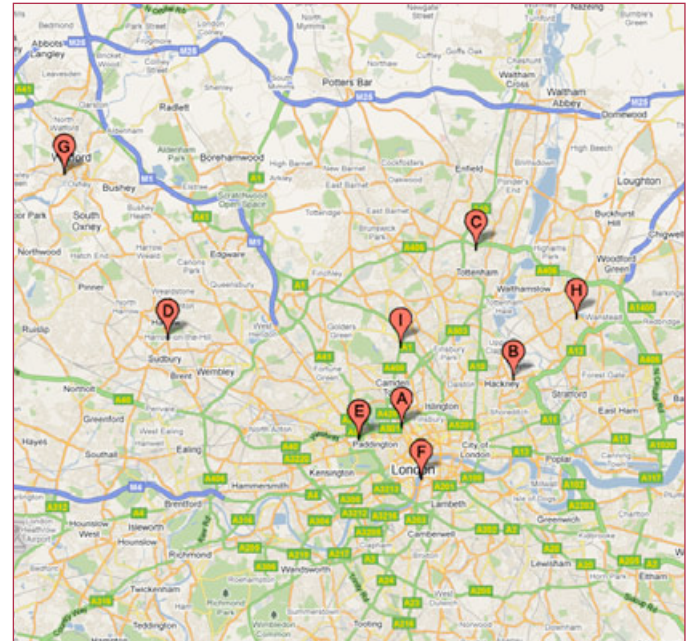
We have agreements with every PCT in the country so patients can be referred to the NHNN from anywhere. We also provide specialist neurosciences services to a number of linked hospitals, including joint consultant posts between NHNN and linked hospitals.

These include:

- UCLH (A)
- Homerton University Hospital (B)
- North Middlesex Hospital (C)
- Northwick Park (D)
- St Mary's (E)
- St Thomas' (F)
- Watford (G)
- Whipps Cross (H)
- Whittington (I)

In addition, the hospital has strong links with other specialist hospitals including those within the UCL Partners Academic Health Sciences partnership comprising: Great Ormond Street Hospital for Sick Children, Moorfields Eye Hospital and the Royal Free Hospital. We also have close

links with the Royal National Orthopaedic Hospital in Stanmore. The close proximity of the Institute of Neurology allows effective integration with research programmes that directly translate into improved patient care.



◀ BACK NEXT ▶

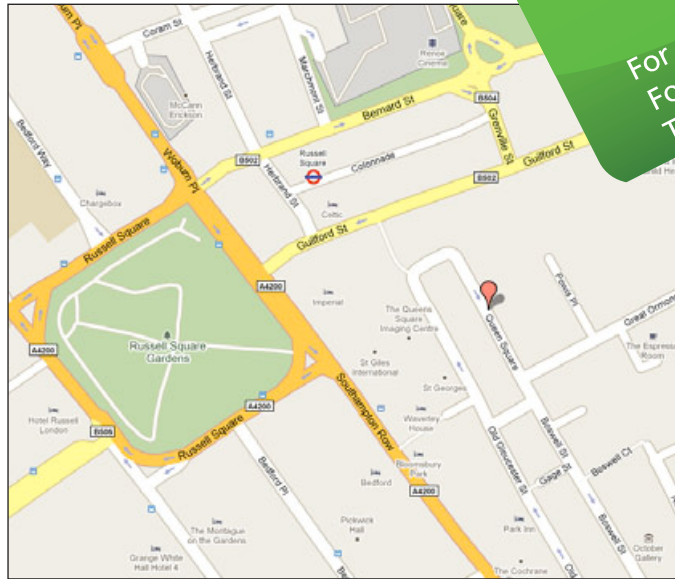
# Contact us

## Address

The National Hospital for Neurology & Neurosurgery  
Queen Square  
London  
WC1N 3BG

**Switchboard:** 0845 155 5000

All our telephone numbers have changed  
please do **not** use the numbers in this  
booklet use the numbers in this  
booklet instead:  
For outpatients please dial: 020 3448 4777  
For inpatients please dial: 020 3448 4774  
The switchboard remains: 0845 155 5000



← BACK