



MSc in ADVANCED NEUROIMAGING

UCL Institute of Neurology
ENTRY SEPTEMBER 2014

For those from clinical, radiography, natural sciences, neuroscience or related backgrounds wishing to pursue a career in Neuroimaging or Neuroscience research.

- Scientific and technological principles of Neuroimaging
- Standard & advanced imaging modalities
- Foundational neuroanatomy / physiology
- Pathology & Diagnostic Imaging
- Access to cutting edge Neuroimaging facilities
- Involvement in high-quality* research

**Latest government Research Assessment Exercise highlighted human brain imaging as a world-leading area of research at the UCL Institute of Neurology*

Full-time (1 year) or **part-time** (2 years)

Closing date for applications: **1 August 2014**

Online application: www.ucl.ac.uk/prospective-students

Funding:

Three £2000 bursaries available to Home/EU students (awarded on academic merit, based on applications/references provided)

[UCL Scholarships](#)

[Prospective scholarships](#)

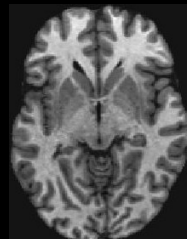
Interships & Clinical Attachments

Opportunities for a subsequent 1 year internship with IXICO or 4 month clinical attachment for clinicians

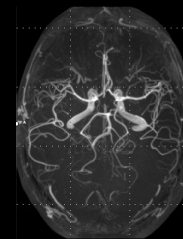
For more information:

David Blundred, Education Unit, UCL Institute of Neurology, Queen Square, London WC1N 3BG, UK

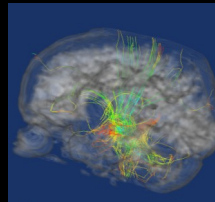
© Nitesh Bhargava / Dreamstime.com



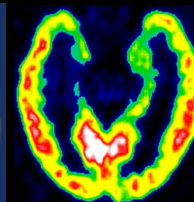
Structural Magnetic Resonance Imaging
WTCN, UCL Institute of Neurology



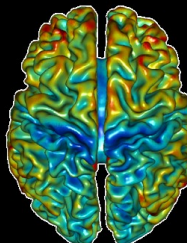
Magnetic Resonance Angiography
Neuroangiology, UCL Institute of Neurology



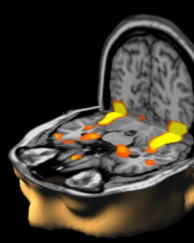
Diffusion Tensor Imaging
DTIView, P Basso, Institute of Child Health, UCL



Flumazenil PET
M Koeps, UCL Institute of Neurology



Quantitative Image Analysis
WTCN, UCL Institute of Neurology



Functional Magnetic Resonance Imaging
WTCN, UCL Institute of Neurology